

CALIFORNIA STATE UNIVERSITY, SACRAMENTO JEANNE CLERY DISCLOSURE OF CAMPUS SECURITY POLICY AND CAMPUS CRIME STATISTICS ACT AND FIRE SAFETY REPORT 2013

Enforcement and Arrest Authority

The University and the Sacramento State Police Department (also known as the Department of Public Safety) encourage the prompt reporting of any incident that compromises the safety, health or rights of Sacramento State community members. The Sacramento State Police Department is the primary respondent for campus emergencies and reports of criminal activity on campus. Officers are fully certified by the State of California with full arrest powers and cooperate with State and local police agencies (Sacramento City Police and Sacramento County Sheriff's Departments), resulting in the University's awareness of criminal activity perpetrated beyond the campus. Reports of criminal activity will be fully investigated, and appropriate referrals made to the courts, the University, or both. Community members are encouraged to report crime concerns to the Sacramento State Police Department as well as Student Affairs personnel, counselors, campus security authorities, and administrators.

Working Relationship with State and Local Police

The Sacramento City Police Department and the Sacramento County Sheriff's Department are the primary responding law enforcement agencies to off-campus properties, fraternities, sororities, and other student organizations located within the city or county of Sacramento. Sacramento State Police Department is notified of occurrences reported at these locations. Sacramento State Police Department may respond to crimes in progress at these locations, depending upon the nature of the crime and the proximity to campus. Crime reports and statistics generated at these locations are maintained by the appropriate agencies and are contained in this report. The Sacramento City Police Department and the Sacramento State Police Department have a Memorandum Of Understanding (MOU) describing responsibilities and investigation of alleged criminal offenses.

Safety Improvements

In 2012, the University completed an initiative to enhance safety by the implementation of a Cisco Safety and Security External Camera System. The system can be utilized to

monitor activities during large scale events at the stadium, select parking lots and areas with high pedestrian traffic flows. In addition, the campus is completing the review of current camera locations and the effectiveness of adding additional cameras in strategic locations. The University believes that this system provides an added layer of safety and security for the campus community. .

The storm drainage and runoff project for the Academic Information Resource Center and the Library was completed in 2011. The main goal was to redirect storm water runoff from its current path to one away from the buildings.

The University completed a lighting enhancement project to add additional lighting to critical walkways, from the residence hall area to the Recreation and Wellness Center (WELL). A parking lot light improvement study was completed with recommendations provided to enhance lighting in Parking Lot #1, and improve exterior lighting around Capistrano Hall. A study to add thirty additional LED street lights to campus roadways is currently under review.

The University is in the process of conducting a campus wide traffic study to determine more efficient and effective ways to move traffic around campus roadways.

The University is in the process of completing two new initiatives which will improve capabilities and enhance safety for the campus community.

The first initiative is a project to integrate current and additional components of the Emergency Notification Systems (ENS). The project will address the effectiveness in the integration of emails, text messaging, telephone alerts, social networking, electronic signs and audible broadcasts during emergency situations.

The second initiative examines the potential effectiveness and efficiency in implementing a building electronic access system. The system would allow remote building access control during emergency and non-emergency situations.

Federal Safety Compliance

Disclosure and Distribution

The University is required to publish statistics in compliance with the Jeanne Clery Disclosure of Campus Security Policy and Campus Crime Statistics Act, Campus Fire Safety Right-To-Know Act (Citation 34 CFR 668.49(b)) and the Higher Education Opportunity Act (Public Law 110-315) (HEOA) which was enacted on August 14, 2008. These statistics and policies are available on-line at the Website: <http://www.csus.edu/police/cleryact.htm>. On March 7, 2013, The Violence Against Women Reauthorization Act (Public law 113-4) became law. This law will require institutions to compile statistics for instances of sexual assault, domestic violence, dating violence and stalking that are reported to campus security authorities or local police agencies. The University will make a good faith effort to collect these statistics for calendar year 2013. The University faculty and staff receive notice in their August paycheck as to where CLERY information can be located. Faculty and staff also receive notification to their Saalink account. All current and prospective students that are enrolled/applied as of census date will receive an email to their Saalink account of record advising them of where they can go to receive CLERY information.

Printed copies are available in the Library, Student Affairs Office, Police Service Center located in the University Union and at the Sacramento State Police Department, located at 6000 J Street, Sacramento, CA. 95819-6092. Information regarding the website location and where to access printed copies is available in the Registration and Advising Handbook, Invitation to Register, Application for Employment, University Catalog, campus bulletin, and at campus presentations. For additional information, copies of the Uniform Crime Report and the Chancellor's Public Safety Activities Report are retained in the Library.

Public Access Arrest Log

The Sacramento State Police Department provides a daily media log for the last 60 days. This log is available to any member of the public upon request. The Sacramento State Police Department Media Log can be viewed on the Sacramento State Police Department website at <http://www.csus.edu/aba/police/media-log.html> Additional logs will be made available within two business days.

Student Discipline

Students may be placed on probation, suspended, or expelled, for committing violent or criminal acts on campus or at campus-related events. In compliance with federal and state laws and regulations, victims of violent crimes, including sexual assaults, will be informed whenever information regarding disciplinary action taken by the University is included in a student file. Within three (3) working days, victims will be informed of the results of the disciplinary action. The victim is required to keep the results of the disciplinary action and appeal confidential. The University has established the Student Conduct Advisory Team to address student concerns and issues. For further information, contact the Director of Student Conduct in Panning, Enrollment Management and Student Affairs at (916) 278-6060.

Graduation Rates

Institutions of higher education are required to disclose information to prospective and current students about the institution's graduation rates for first time freshmen. The Sacramento State campus draws first-time freshmen from the top one-third of California's high school graduates. Since 1960, the CSU has awarded more than 1.2 million baccalaureate degrees in hundreds of program areas. More than any other institution in California, the CSU has maintained access for students and academic life with working family obligations. The rate of graduation will vary depending upon the needs of the individual student to balance work, school and family priorities. Additional information regarding graduation rates of first-time freshmen is available in the Registrar's Office.

The six-year graduation rate at Sacramento State, for regularly admitted first-time freshmen (2006 cohort) who attempted a minimum of 12 units during their first semester is 43.7%. During the 2012-2013 college year 5,514 Bachelor's Degrees, 983 Master's Degrees, and 34 Doctoral Degrees were awarded.

Reporting Crimes or Other Emergencies

Crime Reporting Policy

Community members observing criminal activities and other emergencies occurring on campus should contact the Sacramento State Police Department immediately.

- 9-1-1 on any campus telephone (except pay phones)
- Utilizing emergency phones (blue light type)
- Contacting a police officer on patrol
- In person contact the Sacramento State Police Department public counter.
- From a cell phone, citizens can call the Sacramento State Police Department for on-campus emergencies, at (916) 278-6900.

Non-Emergency needs such as:

- Lost, Stolen or Missing Property
- Vehicle Unlocks
- Night Escorts
- Vehicle Battery Jumper Pack

Telephone Contact (916) 278-6851

Citizens should immediately report incidents that they feel might be a threat to life or property.

Crimes reported will be listed in the appropriate categories in the Clery Compliance Report.

All reported crimes will be taken seriously even if anonymous or taken confidentially.

Crimes occurring off campus should be immediately reported to the appropriate law enforcement agency;

- Sacramento State Police (916) 278-6851
- Sacramento City Police (916) 264-5471
- California Highway Patrol (916) 861-1300
- Sacramento County Sheriff's (916) 874-5115

To Report a Crime

1. Give your name, telephone number, and location.
2. Give clear and accurate information.
3. Be prepared to supply suspect and vehicle description, and direction of travel.
4. **DON'T HANG UP!** Follow the instructions of the dispatcher.

The department will take the following actions as necessary:

- Dispatch a police officer(s) and/or Sacramento Fire Department/medical assistance to the scene of the incident
- Investigate or assist allied agencies with the situation
- Take appropriate actions to identify, apprehend, and prosecute responsible person(s)
- Notify or request assistance from other law enforcement agencies and/or other allied agencies as appropriate
- Document occurrence or take appropriate action and/or notify appropriate agency/departments



Hate Crimes and Hate Incidents

"Hate violence" is defined as any act of physical intimidation or physical harassment, physical force, or physical violence, or the threat of physical force or violence, that is directed against any person or group of persons because of the ethnicity, race, national origin, religion, sex, sexual orientation, disability, or political/religious beliefs of that person or group. The University and the Sacramento State Police Department will not tolerate hate violence and is dedicated to ensuring all persons are protected regardless of their race, national origin, religion, sex, sexual orientation, age, or disability or political/religious beliefs. In furtherance of this mission, all 'hate' crimes and incidents will be thoroughly documented, investigated, and prosecuted.

Health and Safety Policies

Alcohol and Drug Policy

In compliance with the Drug Free Schools and Campuses Regulations (34CFR, Part 86) of the Drug Free Schools and Communications Act (DFSCA), and the Higher Education Act (Section 120A), Sacramento State recognizes that the abuse of alcohol and other drugs is a threat to the mission of this institution and to the members of this university community.

On-campus use of alcohol is limited to certain approved events and locations covered by the Sacramento State Alcoholic Beverage and Drug Policy.

There is a zero tolerance for underage drinking on campus. Violations of underage drinking laws will be addressed through Alcoholic Beverage Control (ABC) sanctions and/or the campus disciplinary process.

The unlawful manufacture, distribution, dispensation, possession, or use of a controlled substance on the campus is absolutely prohibited and subject to vigorous enforcement of all applicable statutes. Violators are subject to university discipline, criminal prosecution and removal from University housing. A complete description of these regulations is contained in the Alcohol Beverage and Drug Policy File Number STU-0103. This policy can be located in the University Policy Manual on the Sacramento State homepage website.

The University recognizes alcohol and other drug dependency as an illness and a major health problem. Excessive use of alcohol and other drugs is a serious health problem in itself, but alcohol and drug abuse can also contribute to a host of other physical and mental health problems such as complications in pregnancy, violent behavior, HIV infection and other sexually transmitted diseases, depression and anxiety, hallucinations, and death. University committees, information, assessment, and referral services for alcohol and other drug-related problems are available on campus.

Programs include Sacramento State Alcohol Advisory Council, Alcohol, Tobacco and Other Drug Health Educator,, campus education and outreach programs and a Peer Health Education program. Services for students are available at the Student Health and Counseling Services in the WELL. Services for employees are available through the Sacramento State Employee Assistance Program through Managed Health Network (1-800-535-4985).

Workplace Violence

(UMV19020); It is the University's desire to maintain a safe environment for the campus community to conduct business and fulfill its mission. In view of the increase of violent incidents in workplaces across the nation, the following policies and procedures of Sacramento State, regarding potential threats to the campus community are clarified.

For the purposes of this policy, violence and threats of violence include but are not limited to:

- Any act which is physically assaultive
- Any substantial threat to harm or to endanger the safety of others
- Behaviors or actions interpreted by a reasonable person as carrying the potential for violence and/or acts of aggression
- Any substantial threat to destroy property
- Possession on campus of any weapon or dangerous instrument as defined in the California Penal Code, Title 5 of the California Administrative Code or University Policy

A climate of fear or intimidation will not be tolerated at Sacramento State. Threatening behaviors, acts of aggression and violence will result in appropriate action by the University, up to and including dismissal.

Violence in the Workplace Prevention Presentations are provided on a yearly basis or by request. Please visit the police department website at www.csus.edu/police and look under events and training for current dates and times.

Health and Safety Policies

Counseling and Psychological Services

The Sacramento State Police Department works in concert with the Student Health Center and Psychological Services. We take a team approach in dealing with sensitive situations and refer persons to counseling services, as needed. The University has a separate Employee Assistance Program (EAP) for staff, faculty and family members that can be accessed through Managed Health Network (1-800-535-4985).

Police officers are trained in threat assessment and counselors encourage their clients to report crimes to the Sacramento State Police Department. Crime information can be forwarded anonymously at the request of the client to the Sacramento State Police Department. Counselors do not disclose information to the police department without the consent of the client unless there is an immediate threat to safety.

Sex Offender Registration Policy

Violent Crime Control and Law Enforcement Act of 1994 (also referred to as "Campus Sex Crimes Prevention Act"): Effective October 28, 2002, Penal Code 290.1 was expanded and requires sexual offenders to register with the Sacramento State Police Department. Convicted sexual offenders (including transients) are required to register under Section 290 if they are residing on the university campus; enrolled as a student of the University; employed by the University, either full-time or part-time (includes paid employees or volunteers); or working or carrying on a vocation at the university (e.g. contractors) for more than 14 days or for an aggregate period exceeding 30 days in a calendar year (including paid workers as well as volunteers).

Persons listed above must register with the Sacramento State Police Department within five working days of commencing enrollment or employment with the University. Registrants are also required to notify the Sacramento State Police Department within five working days of ceasing to be enrolled or employed, or ceasing to carry on a vocation at the University.

Megan's Law - There is no longer public access on a "walk in basis" at any law enforcement agencies or at the old 900 telephone number. The information is now available online at <http://www.meganslaw.ca.gov>. The general number for Megan's Law is (916) 227-4974. Any questions regarding viewing, etc. should be directed to this number.



California Department of
Justice
Megan's Law website:
www.meganslaw.ca.gov

Sexual Assault Policy and Procedures

Reporting Sexual Assaults

All members of the campus community should be aware that sexual assaults, including date or acquaintance rape, are prohibited by state laws, university protocols, and will be viewed by Sacramento State as a serious matter.

The University has developed a Sexual Assault Response Network Team to offer services and support for victims of sexual assaults. The University has adopted and implemented a "Student Sexual Misconduct Policy and Procedures" document for students (STU-0120).

As soon as convenient, the victim of a sexual assault should report the incident to the Sacramento State Police Department, the local police (if off-campus), appropriate University staff, or through Rape Prevention personnel. Sacramento State will assist reporting to outside agencies as appropriate.

The victim should make every attempt to preserve any physical evidence of the assault. This may include a voluntary medical exam, not showering, or disposing of any damaged clothing, or other items that are present after/during the assault.

The Sacramento State Police Department, with the victim's consent, will immediately conduct a criminal investigation of on-campus sexual assaults. Completed investigations will be forwarded to the District Attorney's Office for review and possible prosecution. Disciplinary actions may be imposed on recognized individual students, student organizations, and/or university faculty and staff found guilty of a sexual assault. Students may be placed on probation, suspended, or expelled, for committing violent or criminal acts on campus or at campus-related events.

In the case of alleged sexual assault, the accuser and the accused are entitled to the same opportunities to have others present during a campus disciplinary proceeding; and both shall be informed of the outcome of any campus disciplinary proceedings brought alleging a sexual assault. The University will assist the victim in changing academic and living situations if so required and if such changes are reasonably available.

Title IX requires that the CSU adopt and publish complaint procedures that provide for prompt and equitable resolution of sex discrimination complaints, including sexual harassment and violence. CSU Executive Order 1074 (<http://www.calstate.edu/eo/EO-1074.pdf>) is the system wide procedure for all complaints of discrimination, harassment or retaliation made by students against the CSU, a CSU employee, other CSU students or a third party. CSU Executive Orders 927 and 928 are the system wide policy and procedure for all complaints of discrimination, harassment or retaliation made by faculty, staff, student employees and employees not eligible to file a complaint or grievance under a collective bargaining agreement or whose collective bargaining agreement incorporates the CSU system wide policy and procedure, against the CSU, CSU employees, CSU students or third parties. Faculty, staff and students who wish to make a complaint under these procedures should contact the campus Discrimination, Harassment and Retaliation Administrator at 916-278-5770. To view the complete Title IX Notice of Non-discrimination, please go to <http://www.csus.edu/hr/departments/employment%20equity/title%20ix%20notice%20of%20non-discrimination.pdf>

Sexual Assault/Domestic Violence Resources

Violence and Sexual Assault Support Services	278-3799
Sacramento State Employee Assistance Program (MHN)	(800) 535-4985
Sacramento State Student Health and Counseling Service	278-6416
Victim/Witness Assistance	874-5701
Restraining Orders	874-5064
W.E.A.V.E.	920-2952
Victims of Crime Resource Center	1-800-VICTIMS (842-8467)
National Sexual Assault Hotline	1-800-656-4673
National Domestic Violence Assistance	1-800-799-7233

Security and Crime Prevention Programs

Campus Safety & Environmental Health Committee

The Campus Safety & Environmental Health Committee is charged with the task of recommending to the University President; policies, policy changes, and other actions as they pertain to campus safety and environmental health issues. The committee shall review all issues raised from campus and community members related to safety and make appropriate recommendations for action. The committee is further charged with making recommendations to promote greater sensitivity to the needs of our diverse population with regard to safety issues. The committee will review items regarding disaster and emergency preparedness.

Personal Safety Training

The Sacramento State Police Department has full-time Police Officers who are available, on request, for personal safety presentations to increase awareness and personal responsibility of students, faculty, or staff (916) 278-6851. Presentations are offered consistently during the semester. The Sacramento State Police Department has completed approximately 580 crime prevention and safety presentations between 2006 and 2012. A full-time Sacramento State employee is available for seminars concerning personal safety for women through the Violence and Sexual Assault Support Services (916) 278-3799. In addition, students are employed through the Sacramento State Police Department as Community Service Officers, with primary responsibility for providing patrols and community assistance on campus. The Community Service Officers provide directed patrols in the Residential Life Complex, Academic Information Resource Center, and the Library.

Clery Training

The University provides Jeanne Clery training to Campus Security Authorities and other appropriate personnel on a regular basis. In November 2010, Campus Security Authorities from Public Safety attended a three day Advanced Clery Act Training Course. In January 2011, 2012 and 2013 Campus Security Authorities and campus community members participated in a Clery Act training program. Additional training will be provided via PowerPoint presentation.

Crime Alert Program

The University participates in the Citizens Crime Alert Rewards Program (1-800-AA-CRIME, or 916-443-HELP). Their website is www.CrimeAlert.org. This program allows for assistance for locating suspects or information regarding crimes or incidents that occur in the Sacramento region, including the University.

Safe Rides

The program is sponsored by the Associated Students, Inc., and provides free, safe, and confidential rides home to the students, staff, and faculty of Sacramento State. The Safe Rides Program is designed to prevent incidents related to drinking and driving that lead to accidents, DUI/DWI arrests, and death. It can also be used in many different situations. For instance, Safe Rides can be used to get home from a bad date, a late movie, or a broken down car. Safe Rides operates from September through May on Wednesday, Thursday, Friday, and Saturday nights from 10 p.m. to 2 a.m. All that is needed is a valid One Card and a call to 916-278-TAXI.

Night Shuttle

The University Transportation and Parking Services offer the Night Shuttle. The Night Shuttle affords transportation to the campus community from various locations on campus to designated areas in the parking lots from dusk until 11:00 p.m. Monday through Thursday. This service can be requested by contacting (916) 278-7260.

www.csus.edu/utaps

Hornet Safety Escort

After Night Shuttle hours (approximately 11:00 p.m.), campus community members can request a safety escort by contacting Sacramento State Police Department Dispatch at (916) 278-6851. Transportation will be provided based on the availability of police personnel.

Emergency Response & Evacuation Procedures

Emergency Phones/Blue Light Phones

Emergency telephones are located throughout the campus primarily within building hallways, the parking structures, and in parking lots. The Sacramento State Police Department can be accessed by pushing a button or dialing 9-1-1 depending on the telephone being utilized. The phones are tested at least once a semester to ensure functionality. Problems are forwarded to Information Resources and Technology for repairs.

Crime Alert Bulletins

The University has established a policy (Presidential Memorandum 04-05) addressing threats to the campus community and guidelines for providing timely warnings. Timely warnings will be distributed to the campus community using various mediums of communication. The type of event or situation will be reviewed by the Sacramento State Police Department and Public Affairs to determine the most effective method to distribute the timely warning information. Where there is a possible public safety related "threat" to faculty, staff, and students on campus, the Sacramento State Police Department and Public Affairs will make reasonable efforts to notify the students, faculty, and staff. For a list of Crime Alert bulletins, please visit: <http://www.csus.edu/aba/police/alert-bulletins.html>

Community Service Specialists

In 2010, the University initiated a Community Service Specialist Program. The goal of this program is to provide increased patrols and enhance visibility at the service centers on campus and at the Folsom Hall Complex.

Security and Access to Campus Facilities

Buildings on the Sacramento State campus remain open only through the completion of the last scheduled event. A daily schedule is provided to Facilities Services and buildings are locked on the basis of that schedule. Custodial Services and Community Service Specialists are responsible for the unlocking of buildings on a daily basis for scheduled classes. After buildings are locked, only employees with offices and personnel with maintenance responsibilities have access to buildings.

Facilities Services maintains the University buildings and grounds with concern for security and safety. Campus facilities and grounds are inspected on a regular basis to ensure that broken windows, locks, and repairs are made in an expeditious manner. The Sacramento State Police Department also receives information from the campus community regarding damaged roadways, overgrowth of shrubbery, and other areas in need of repair. This information is forwarded to Facilities Services in a timely manner.

Facilities Services conducts testing of all emergency generators on a monthly basis. This process is performed to ensure that emergency generators are fueled and functioning properly so the generators can be activated in case of an emergency.

Lighting surveys were conducted and improvements were made in various locations on campus. Additional emergency telephones and lighting were added to Parking Structure I in 1999. With the construction of Parking Structure II (2000) and Parking Structure III (2007) an assessment was made to include increased lighting and emergency phones. Anyone aware of a hazardous situation in any building or on the campus grounds can notify Facilities Services (916) 278-6242 or the Sacramento State Police Department so repairs can be made promptly. Each semester all emergency telephones are checked by the Sacramento State Police Department and the IRT Department.

Sacramento State Residence Hall policy requires that exterior doors be locked at all times. All residents are issued a key fob for personal access to the exterior doors and restrooms. A resident must accompany all guests. Additional information is contained in the Guide to Residential Life available through the Office of Residential Life in Sierra Hall. The Sacramento State Police Department worked with the American River Courtyard planning group on physical security for the new facility. The new American River Courtyard residence hall opened in August, 2009.

Emergency Response & Evacuation Procedures

Emergency Response

The University's Multi-hazard Plan incorporates an 'all hazards' approach using the emergency management planning principles of mitigation, preparation, response and recovery, to address critical incidents and disasters on campus. In 2011, the plan was reviewed, updated and approved.

Emergency Notification System

In 2008, Sacramento State began implementation of a new integrated Emergency Notification System, known as ENS. In 2011, an initiative was started to update and integrate ENS. The system can be utilized to distribute emergency messages during major critical incidents that occur on campus. Students, Faculty and Staff can receive emergency messages on their campus assigned email accounts. Students are required to provide their cellphone information during the registration process to receive text messages. Faculty and staff can "Opt-In" to receive text messages (SMS) via the ENS Website at (<http://www.csus.edu/ENS>). Emergency personnel, first responders and secondary responders may also receive telephone calls notifying them that an emergency has occurred. The system has been and will continue to be tested during emergency exercises and during the academic year. The system has the capability to ring campus telephones in specific buildings during critical incidents.

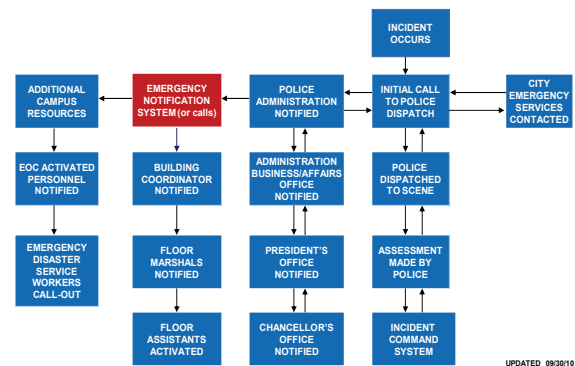
The ENS system may be used to notify the campus community upon the confirmation of a significant on-campus emergency or dangerous situation involving an immediate threat to the health or safety of students, faculty or staff or when a hazardous condition, natural disaster, or other critical incident reaches or has the potential for reaching proportions beyond the capacity of routine operations. In addition to the ENS system, the campus may use additional notification systems to notify the greater campus community.

Sacramento State will, without delay, and taking into account the safety of the community, determine the content of the notification and initiate the notification system, unless issuing a notification will, in the professional judgment of responsible authorities, compromise efforts to assist a victim or to contain, respond to, or otherwise mitigate the emergency.

The Sacramento State Multi-hazard Plan is designed to integrate with the California Standardized Emergency Management System (SEMS), the National Incident Management System (NIMS) and the Incident Command System (ICS).

Based on the available information, the designated incident commander will determine and confirm that there is a significant emergency or potential threat that meets the criteria for dissemination of a mass emergency notification message.

EMERGENCY NOTIFICATION SYSTEM PROCESS



Depending on the magnitude of the critical incident and potential on life safety the President, Vice President of Administration Business Affairs, Chief of Police, Police manager, or Associate Vice President of Public Affairs will determine the necessity of distributing a message to the campus community.

An Emergency Notification System Group meets on a regular basis and has designed pre-approved messages for various incidents. Messages can also be designed specifically based on the elements of the incident.

The following personnel or their designees have the authority to activate the Emergency Notification System (ENS) in the event of an emergency/hazardous condition, natural disaster or other critical incident.

- President
- Special Assistant to the President
- Vice President of Administration Business Affairs
- Chief of Police
- Associate Vice President of Public Affairs

Emergency Response & Evacuation Procedures

Inclusive in the Emergency Notification System (ENS), the campus has various methods and processes to distribute emergency information;

- Text messages/email/voicemail
- Telephone trees/emergency cell phones
- Police vehicle public address systems
- Bullhorns
- Faxes
- Emergency Blue Light and other phones
- Runners
- Electronic signs/posting boards
- Public radio announcements/commercial and campus radio
- Local television announcements/Emergency Alert System (EAS)
- Internet websites/campus homepage
- Visiplex audible alert system
- Building postings/bulletins
- Social Media websites

Once the determination has been made that it is appropriate to send out an emergency message the following departments are responsible for activating the messaging system.

- Police Department
- Public Affairs
- Information Resource Technology

On January 1, 2010, the University adopted a policy for broadcast emergency and targeted messaging, policy number PRS-0111.

Emergency Response and evacuation testing/ Response Exercise

The Emergency Notification System (ENS) is tested on an annual basis. The Information Resource Technology Department is responsible for testing the ENS system on a weekly basis to ensure that it is functioning properly. In addition, the University updates the student, faculty and staff lists on a regular basis.

Information regarding the procedures to test the emergency response and evacuation protocols are disseminated in

Building Emergency Preparedness training, the weekly bulletin, campus websites and during Disaster Preparedness training classes.

Sacramento State conducts periodic testing of emergency response and evacuation procedures at regular intervals across campus according to accreditation guidelines, California State University Executive Order 1013 and the California Fire Code.

In 2012, an evacuation exercise was conducted involving Placer Hall and the Building Emergency Preparedness Team. During the exercise the Emergency Notification System was utilized to notify Building team members. As part of the exercise a review was conducted on the effectiveness of the system and evacuation plans.

In 2012, there were twenty-six building evacuation drills conducted by Building Emergency Preparedness Teams.

In 2012, Sacramento State Police provided two Active Shooter training classes for faculty and staff members. Three training classes were provided for instruction and use of building emergency evacuation chairs.

On October 18, 2012 the University participated in the Great California Shake Out earthquake exercise. The event was advertised to the campus community and voluntary participation was strongly encouraged.

In 2012, the University held 8 training sessions for staff, faculty and emergency responders on Disaster Preparedness. Training included an overview of the National Incident Management System (NIMS), Standardized Emergency Management Systems (SEMS) and the Incident Command System (ICS) principles.

For 2013, the University has scheduled eight training sessions for staff, faculty and emergency responders on Emergency Preparedness training will include an overview the National Incident Management System (NIMS), Standardized Emergency Management Systems (SEMS) and the Incident Command System (ICS) principles.

Missing Student Notification Policy & Procedures

The University Residence Hall Life has developed an institutional policy regarding missing student notification procedures for students who reside in on-campus housing facilities. The Sacramento State Police Department currently has a Missing Persons Policy that incorporates procedures required under the Kristin Smart Campus Security Act.

On-Campus Residence Halls Missing Student Procedures

If a member of the Campus Community has reason to believe that a student who resides in on-campus residence halls is missing, he or she should immediately notify the Sacramento State Police Department at (916) 278-6851. Upon receiving the report, Sacramento State Police will initiate an investigation.

After an initial investigation of the missing person report, should the Sacramento State Police Department determine that the student is missing the Sacramento State Police Department will notify Sacramento City and County law enforcement agencies via the California Law Enforcement Telecommunication System (CLETS) and enter the student into the law enforcement Missing Person System (MUPS) no later than 24 hours after the student is determined to be missing. The Office of Residential Hall Life and/or the Vice President of Student Affairs will notify the student's emergency contact, if one has been provided, no later than 24 hours after the student is determined to be missing. If the missing student is under the age of 18 and is not an emancipated individual, the Sacramento State Police Department or Resident Hall Life Staff will notify the student's parent or legal guardian immediately after the Sacramento State Police Department determines that the student has been missing for 24 hours or more.

The Office of Residence Hall Life Student Handbook contains the following steps regarding Missing Student Policy and Procedure.

During the housing application process students are asked to provide emergency contact information; however, providing such information is voluntary if the student is over the age of 18. Students will be invited annually thereafter to update their emergency contact information.

In addition to registering an emergency contact person, students living in the residence halls have an option to add

a missing person contact person. This information is collected on the student's housing application. If the student has identified a missing person contact, that person will be notified by Housing and Residential Life and/or the Vice President of Student Affairs no later than 24 hours after the student has been determined to be missing.

- Gather the following information from the reporting source: name of source, relationship to missing person and contact information.
- Gather the following information about the missing person: name, age, description (picture if possible), contact information, last seen date/time/location, change in behavior/stress/relationship, and reason for concern.
- Check the student's room.
- Perform routine checks within residence hall community.
- Check with friends and roommate(s) to see when the missing person was last seen or contacted.
- Call (cell phone), email or text the student using the following script: A fellow resident (or other person, as appropriate) has noticed your absence. Could you please let your Residence Life Coordinator (add name and number) know that you are ok.
- Leave the same note on the missing student's bed advising him/her to contact the RLC immediately.
- Determine whether the resident's ID has been used to gain access to the Dining Center.
- Determine whether the resident's mail has accumulated in his or her mailbox.
- Check CMS to see if the resident has recently withdrawn.
- Check with facilities to determine whether the resident's FOB has been used.
- Review the information gathered by the Resident Assistant. If necessary, collect additional information if possible from the individual who reported the student as missing (reasons why the person is believed to be missing, last date/time of contact, actions the individual has taken to locate the student, etc.).
- Contact IRT to determine computer lab usage, My Sac State logon, etc.
- If possible, check Facebook for any information that may be helpful.
- Contact Parking Services to obtain the student's car make, model, year and color along with the vehicle's license plate number and state. Have Police check on campus to see if the missing student's vehicle is accounted for.
- If parents/guardians are not involved in the initial report, a decision will be made regarding notification of the missing student's emergency contact or parent. If a missing student is under the age of 18 and not emancipated from their parents, the custodial parent will be immediately notified by University officials.

Publications & Off-Campus Housing

Publications

Brochures are available through the Sacramento State Police Department which provides additional information and training under the following titles:

- [A Guide to Safe & Responsible Partyng](#)
- [Alcohol Alert](#)
- [Alcohol – The Hard Facts](#)
- [Apartment Safety Checklist](#)
- [Bicycle Safety Tips](#)
- [CA Driver License & Identification Cards](#)
- [CA Victim Compensation Program \(CaVCP\)](#)
- [Compensation for Victims of Violent Crime](#)
- [Crime Prevention Information](#)
- [Crime Victims Services](#)
- [Dater's Bill of Rights](#)
- [Depression and College Students](#)
- [Domestic Violence](#)
- [Do You Know How To Be Safe](#)
- [Help for Victims of Domestic Violence](#)
- [Parents You're Not Done Yet](#)
- [Personal Safety Guide](#)
- [Preventing Arson & Vandalism](#)
- [Preventing Date Rape](#)
- [Preventing Vehicle Theft](#)
- [Sacramento State Police Department](#)
- [Safety Tips for Runners and Walkers](#)
- [Sexual Assault Fact Sheet](#)
- [Sexual Assault Prevention](#)
- [Sexual Harassment Facts](#)
- [Streetwise – The Way to Be](#)
- [Sustaining Your Gang Prevention Efforts](#)
- [Tobacco Laws](#)
- [Victim Witness Assistance Program](#)

The brochures are continually reviewed and augmented with timely topics and information. The Sacramento State Rape Prevention Education Program has a brochure on Rape Prevention and another on Acquaintance Rape. An Emergency Response Manual is available to the campus community through the Sacramento State Police Department with information concerning procedures for fire, earthquake, serious injury, bomb threat, hazardous material leaks, and crimes in progress. For an additional list of publications and crime prevention materials, please visit the Sacramento State Police Department website at www.csus.edu/police.

Upper Eastside Lofts

In 2007, the University contracted with a private company to utilize off-campus housing for Sacramento State students at 6400 Folsom Blvd. The property is known as the Upper Eastside Lofts. Although the property is approximately half a mile from the campus, we have included statistics about the property because it is our belief that the information will assist members of the expanded Sacramento State community in keeping themselves safe. In conjunction with the Sacramento City Police Department, the Sacramento State Police Department patrols the property on a routine basis. Students housed at the Upper Eastside Lofts are subject to disciplinary action through the University Student Judicial process.

Clery Statistics for Upper Eastside Lofts

	2010	2011	2012
Murder / Non-negligent Manslaughter	0	0	0
Manslaughter (negligent)	0	0	0
Sex Offenses/ Non-forcible	0	0	0
Robbery	0	0	0
Aggravated Assault	0	0	0
Burglary	0	2	0
Motor Vehicle Theft	0	1	0
Arson	0	0	0

ARRESTS	2010	2011	2012
Liquor Law Violations	0	0	0
Drug Violations	0	0	1
Weapons Violations	0	0	0

DISCIPLINARY ACTION	2010	2011	2012
Liquor Law Violations	36	23	26
Drug Violations	8	6	8
Weapons Violations	0	0	0

Crime Statistics

Reporting Requirements

The University is required to publish statistics in compliance with the Jeanne Clery Disclosure of Campus Security Policy and Campus Crime Statistics Act (formerly the Campus Security Act, Public Law 101-542). These statistics and policies are available at the Website: <http://www.csus.edu/police/cleryact.htm>. Sacramento State faculty and staff receive notice in their August paycheck as to where CLERY information can be located. All students that are enrolled as of census date receive a postcard mailed to their address of record advising them of where they can go to receive CLERY information.

Printed copies are available in the Library, Student Affairs Office, Police Service Center located in the University Union and at the Sacramento State Police Department, 6000 J Street, Sacramento, CA. 95819-6092. Information regarding the website location and where to access printed copies is available in the Student Registration and Advising Handbook, Invitation to Register, Application for Employment, University Catalog, Sacramento State Monday Briefing and at campus presentations. For additional information, copies of the Uniform Crime Report and the Chancellor's Public Safety Activities Report are retained in the Library.

The Sacramento State Police Department provides a daily media log for the last 60 days. This log is available to any member of the public upon request. The Sacramento State Police Department media log can be viewed on the Sacramento State Police Department website at www.csus.edu/aba/police/media-log.html. Additional logs will be made available within two business days.

The Department of Education, in its Higher Education Amendments of 1999, published final rules and regulations providing clarification for crime reporting requirements under the Jeanne Clery Disclosure of Campus Security Policy & Campus Crime Statistics Act. An institution must report statistics concerning the occurrence on campus, on related non-campus property and on public property of the following:

- A. Murder/ Non-Negligent Manslaughter
- B. Manslaughter (Negligent)
- C. Rape (prior to Aug 1, 1992) or Forcible and non-forcible offenses (on or after Aug. 1, 1992)
- D. Aggravated assault
- E. Burglary
- F. Arson
- G. Motor-vehicle theft
- H. Robbery
- I. Hate Crimes- Relating to the above-mentioned offenses, and any incidents of Larceny-Theft, Simple Assault, Intimidation, or Destruction/Damage/ Vandalism that were motivated by bias.

Additionally, statistics concerning the number of arrests or disciplinary referrals for the following crimes on campus must be provided:

- A. Liquor-law violations
- B. Drug abuse violations
- C. Weapon law violations
- D. Statistics concerning the above crimes which manifest evidence of prejudice based on race, religion, sexual orientation, ethnicity, or disability as prescribed by the Hate Crimes Statistics Act

Crime Statistics

Reporting Geography

On-campus:

Any building or property owned or controlled by an institution within the same reasonably contiguous geographic area and used by the institution in direct support of, or in a manner related to, the institution's educational purposes, including residence halls and any building or property that is within or reasonably contiguous to the above description of this definition, that is owned by the institution but controlled by another person, is frequently used by students, and supports institutional purposes.

On-campus Student Housing Facility:

Any student housing facility that is owned or controlled by the institution, or is located on property owned or controlled by the institution, and is within the reasonably contiguous geographic area that makes up the campus is considered an on-campus student housing facility.

Sacramento State Housing Facilities:

American River Courtyards	6002 J Street, Sacramento
Desmond Hall	6014 J Street, Sacramento
Draper Hall	6010 J Street, Sacramento
Jenkins Hall	6012 J Street, Sacramento
Sierra Hall	6006 J Street, Sacramento
Sutter Hall	6004 J Street, Sacramento

Public Property:

All public property, including thoroughfares, streets, sidewalks, and parking facilities, that is within the campus, or immediately adjacent and accessible from campus.

Non-campus Buildings or Property:

Any building or property owned or controlled by a student organization that is officially recognized by the institution; or any building or property owned or controlled by an institution that is used in direct support of, or in relation to, the institution's educational purposes, is frequently used by students, and is not within the same reasonably contiguous geographic area of the institution.

2012 Sacramento State Non-campus Buildings or Property:

Folsom Hall	7667 Folsom Blvd., Sacramento
Ramona Property	3001 Ramona Ave., Sacramento
Hilton Garden Inn	1951 Taylor Road, Roseville
Intel Corporation	1900 Prairie City Road, Folsom
SETA Head Start	925 Del Paso Blvd., Sacramento
Vision Service Plan	3333 Quality Dr., Rancho Cordova
Rudolph Steiner College	9200 Fair Oaks Blvd., Fair Oaks
CHP- Valley Division	2555 First Avenue, Sacramento
El Dorado County Office of Education	6767 Green Valley Road, Placerville
CDE Office of School Transportation	3500 Reed Ave., West Sacramento
Tara Hills Spectrum Center	16330 San Pablo Ave., San Pablo
Placer County Office of Education	360 Nevada Street, Auburn
Sutter County Superintendent Schools	970 Klamath Lane, Annex 1 Yuba City
Caltrans Maintenance Training Academy	4338 Dudley Blvd., McClellan
Santiago Canyon College	8045 E. Chapman Ave., Orange

Crime Definitions

Murder/Non-negligent Manslaughter: The willful (non-negligent) killing of one human being by another.

Manslaughter (Negligent): The unlawful killing of a human being without malice.

Forcible Rape: The carnal knowledge of a person, forcibly and/or against that person's will, or not against the person's will where the victim is incapable of giving consent.

Forcible Sodomy: Oral or anal sexual intercourse with another person, forcibly and/or against that person's will, or not against the person's will where the victim is incapable of giving consent.

Sexual Assault with an Object: The use of an object or instrument to unlawfully penetrate the genital or anal opening of the body of another person, forcibly and/or against the person's will, or not against the person's will where the victim is incapable of giving consent.

Forcible Fondling: The touching of the private body parts of another person for the purpose of sexual gratification, forcibly and/or against that person's will, or not forcibly or against the person's will where the person is incapable of giving consent.

Incest: Non-forcible sexual intercourse between persons who are related to each other within the degrees wherein marriage is prohibited by law.

Statutory Rape: Non-forcible sexual intercourse with a person who is under the statutory age of consent.

Robbery: The taking/attempting to take anything of value from the custody or control of a person or persons by force, threat of force or violence and/or putting the victim in fear.

Aggravated Assault: An unlawful attack by one person upon another for the purpose of inflicting severe bodily injury. Usually accompanied by use of a weapon or by means likely to produce death or great bodily harm, though it is not necessary that physical injury actually occur.

Burglary: The unlawful entry of a structure to commit a felony or a theft. Includes, unlawful entry with intent to

commit a larceny or felony; breaking and entering with intent to commit a larceny; housebreaking, safecracking, all attempts to commit any of the aforementioned.

Arson: The willful and malicious burning of another's property.

Motor Vehicle Theft: The theft or attempted theft of a motor vehicle.

Vandalism: To willfully or maliciously destroy, injure, disfigure, or deface any public or private property, real or personal, without the consent of the owner or person having custody or control by cutting, tearing, breaking, marking, painting, drawing, covering with filth, or any other such means as may be specified by local law.

Larceny: The unlawful taking, carrying, leading, or riding away of property from the possession or constructive possession of another (Constructive possession is defined by *Black's Law Dictionary, 6th ed.* as "where one does not have physical custody or possession, but is in a position to exercise dominion or control over a thing").

Intimidation: To say or do something in such a way that a person of ordinary sensibilities would be fearful of bodily harm.

Simple Assault: All assaults and attempted assaults which are not of an aggravated nature and do not result in serious injury to the victim.

Weapon Law Violations: Violations of laws dealing with weapons offenses, such as manufacture sale, possession or carrying of deadly weapons.

Drug Abuse Violations: Violations of state and local laws relating to the unlawful possession, sale, use, cultivation, and manufacturing of narcotic drugs, and dangerous non-narcotic drugs.

Liquor Law Violations: The violations of laws or ordinances prohibiting: the manufacture, sale, transporting, furnishing, possession of intoxicating liquor. (Drunkenness and driving under the influence are not included in this definition).

STATISTICS ON THE CHART BELOW REFLECT REPORTS MADE TO THE SACRAMENTO STATE POLICE DEPARTMENT , THE CITY OF SACRAMENTO POLICE DEPARTMENT AND OTHER NON-POLICE CAMPUS SECURITY AUTHORITIES.

	ON CAMPUS			RESIDENTIAL FACILITIES			NON-CAMPUS PROPERTY			PUBLIC PROPERTY		
	2010	2011	2012	2010	2011	2012	2010	2011	2012	2010	2011	2012
Murder/Non-Negligent Manslaughter	0	0	0	0	0	0	0	0	0	0	0	0
Manslaughter (Negligent)	0	0	0	0	0	0	0	0	0	0	0	0
Sex Offenses/Forcible	8	2	3	3	1	2	0	0	2	1	1	2
Sex Offenses/Non-forcible	0	0	0	0	0	0	0	0	0	0	0	0
Robbery	2	3	0	0	0	0	1	0	0	1	0	0
Aggravated Assault	4	0	1	0	0	0	3	0	0	3	0	0
Burglary	13	12	34	2	0	1	18	0	0	0	0	0
Motor Vehicle Theft	4	4	5	0	0	0	14	3	0	4	0	0
Arson	0	5	0	0	2	0	0	0	0	1	0	0
Total	31	26	43	5	3	3	36	3	2	10	1	2

STATISTICS ON THE CHART BELOW REFLECT ARRESTS MADE BY THE SACRAMENTO STATE POLICE DEPT. PUBLIC PROPERTY INCLUDES ARRESTS MADE BY THE CITY OF SACRAMENTO POLICE DEPARTMENT.

	ON CAMPUS			RESIDENTIAL FACILITIES			NON-CAMPUS PROPERTY			PUBLIC PROPERTY		
	2010	2011	2012	2010	2011	2012	2010	2011	2012	2010	2011	2012
Liquor Law Violations	5	13	1	2	1	0	0	1	0	1	12	0
Drug Violations	9	15	13	4	2	2	9	5	7	12	7	0
Weapons Possession	4	5	3	0	0	0	4	1	1	2	0	1
Total	18	33	17	6	3	2	13	7	8	15	19	1

STATISTICS ON THE CHART BELOW REFLECT REFERRALS RESULTING IN DISCIPLINARY ACTION.

	ON CAMPUS			RESIDENTIAL FACILITIES			NON-CAMPUS PROPERTY			PUBLIC PROPERTY		
	2010	2011	2012	2010	2011	2012	2010	2011	2012	2010	2011	2012
Liquor Law Violations	144	177	134	144	172	134	0	0	1	0	0	0
Drug Violations	30	54	32	19	43	32	0	0	0	0	0	0
Weapons Possession	0	0	0	0	0	0	0	0	0	0	0	0
Total	174	231	166	163	215	166	0	0	1	0	0	0

HATE CRIMES

2009- Two bias incidents (race) were reported but did not fit the criteria to be classified as a hate crime per Clery definition.

2010-One hate crime (sexual orientation) took place in Parking Lot 2 involving an aggravated assault with a motor vehicle. One bias incident (sexual orientation) took place at the Upper Eastside Lofts (non-campus property) was reported but did not fit the criteria to be classified as a hate crime per Clery definition.

2011-There were no bias incidents or hate crimes reported.

2012-There were no bias incidents or hate crimes reported.

The following tables provide a breakdown of Hate Crimes by Offense Type

Murder and Non-Negligent Manslaughter	Year	On-Campus	Residential Facilities	Non-Campus Property	Public Property	Total
Race	2010	0	0	0	0	0
	2011	0	0	0	0	0
	2012	0	0	0	0	0
Gender	2010	0	0	0	0	0
	2011	0	0	0	0	0
	2012	0	0	0	0	0
Religion	2010	0	0	0	0	0
	2011	0	0	0	0	0
	2012	0	0	0	0	0
Sexual Orientation	2010	0	0	0	0	0
	2011	0	0	0	0	0
	2012	0	0	0	0	0
Ethnicity	2010	0	0	0	0	0
	2011	0	0	0	0	0
	2012	0	0	0	0	0
Disability	2010	0	0	0	0	0
	2011	0	0	0	0	0
	2012	0	0	0	0	0

Manslaughter (Negligent)	Year	On-Campus	Residential Facilities	Non-Campus Property	Public Property	Total
Race	2010	0	0	0	0	0
	2011	0	0	0	0	0
	2012	0	0	0	0	0
Gender	2010	0	0	0	0	0
	2011	0	0	0	0	0
	2012	0	0	0	0	0
Religion	2010	0	0	0	0	0
	2011	0	0	0	0	0
	2012	0	0	0	0	0
Sexual Orientation	2010	0	0	0	0	0
	2011	0	0	0	0	0
	2012	0	0	0	0	0
Ethnicity	2010	0	0	0	0	0
	2011	0	0	0	0	0
	2012	0	0	0	0	0
Disability	2010	0	0	0	0	0
	2011	0	0	0	0	0
	2012	0	0	0	0	0

The following tables provide a breakdown of Hate Crimes by Offense Type

Forcible Sex Offenses	Year	On-Campus	Residential Facilities	Non-Campus Property	Public Property	Total
Race	2010	0	0	0	0	0
	2011	0	0	0	0	0
	2012	0	0	0	0	0
Gender	2010	0	0	0	0	0
	2011	0	0	0	0	0
	2012	0	0	0	0	0
Religion	2010	0	0	0	0	0
	2011	0	0	0	0	0
	2012	0	0	0	0	0
Sexual Orientation	2010	0	0	0	0	0
	2011	0	0	0	0	0
	2012	0	0	0	0	0
Ethnicity	2010	0	0	0	0	0
	2011	0	0	0	0	0
	2012	0	0	0	0	0
Disability	2010	0	0	0	0	0
	2011	0	0	0	0	0
	2012	0	0	0	0	0

Non-Forcible Sex Offenses	Year	On-Campus	Residential Facilities	Non-Campus Property	Public Property	Total
Race	2010	0	0	0	0	0
	2011	0	0	0	0	0
	2012	0	0	0	0	0
Gender	2010	0	0	0	0	0
	2011	0	0	0	0	0
	2012	0	0	0	0	0
Religion	2010	0	0	0	0	0
	2011	0	0	0	0	0
	2012	0	0	0	0	0
Sexual Orientation	2010	0	0	0	0	0
	2011	0	0	0	0	0
	2012	0	0	0	0	0
Ethnicity	2010	0	0	0	0	0
	2011	0	0	0	0	0
	2012	0	0	0	0	0
Disability	2010	0	0	0	0	0
	2011	0	0	0	0	0
	2012	0	0	0	0	0

The following tables provide a breakdown of Hate Crimes by Offense Type

Robbery	Year	On-Campus	Residential Facilities	Non-Campus Property	Public Property	Total
Race	2010	0	0	0	0	0
	2011	0	0	0	0	0
	2012	0	0	0	0	0
Gender	2010	0	0	0	0	0
	2011	0	0	0	0	0
	2012	0	0	0	0	0
Religion	2010	0	0	0	0	0
	2011	0	0	0	0	0
	2012	0	0	0	0	0
Sexual Orientation	2010	0	0	0	0	0
	2011	0	0	0	0	0
	2012	0	0	0	0	0
Ethnicity	2010	0	0	0	0	0
	2011	0	0	0	0	0
	2012	0	0	0	0	0
Disability	2010	0	0	0	0	0
	2011	0	0	0	0	0
	2012	0	0	0	0	0

Aggravated Assault	Year	On-Campus	Residential Facilities	Non-Campus Property	Public Property	Total
Race	2010	0	0	0	0	0
	2011	0	0	0	0	0
	2012	0	0	0	0	0
Gender	2010	0	0	0	0	0
	2011	0	0	0	0	0
	2012	0	0	0	0	0
Religion	2010	0	0	0	0	0
	2011	0	0	0	0	0
	2012	0	0	0	0	0
Sexual Orientation	2010	1	0	0	0	1
	2011	0	0	0	0	0
	2012	0	0	0	0	0
Ethnicity	2010	0	0	0	0	0
	2011	0	0	0	0	0
	2012	0	0	0	0	0
Disability	2010	0	0	0	0	0
	2011	0	0	0	0	0
	2012	0	0	0	0	0

The following tables provide a breakdown of Hate Crimes by Offense Type

Burglary	Year	On-Campus	Residential Facilities	Non-Campus Property	Public Property	Total
Race	2010	0	0	0	0	0
	2011	0	0	0	0	0
	2012	0	0	0	0	0
Gender	2010	0	0	0	0	0
	2011	0	0	0	0	0
	2012	0	0	0	0	0
Religion	2010	0	0	0	0	0
	2011	0	0	0	0	0
	2012	0	0	0	0	0
Sexual Orientation	2010	0	0	0	0	0
	2011	0	0	0	0	0
	2012	0	0	0	0	0
Ethnicity	2010	0	0	0	0	0
	2011	0	0	0	0	0
	2012	0	0	0	0	0
Disability	2010	0	0	0	0	0
	2011	0	0	0	0	0
	2012	0	0	0	0	0

Motor Vehicle Theft	Year	On-Campus	Residential Facilities	Non-Campus Property	Public Property	Total
Race	2010	0	0	0	0	0
	2011	0	0	0	0	0
	2012	0	0	0	0	0
Gender	2010	0	0	0	0	0
	2011	0	0	0	0	0
	2012	0	0	0	0	0
Religion	2010	0	0	0	0	0
	2011	0	0	0	0	0
	2012	0	0	0	0	0
Sexual Orientation	2010	0	0	0	0	0
	2011	0	0	0	0	0
	2012	0	0	0	0	0
Ethnicity	2010	0	0	0	0	0
	2011	0	0	0	0	0
	2012	0	0	0	0	0
Disability	2010	0	0	0	0	0
	2011	0	0	0	0	0
	2012	0	0	0	0	0

The following tables provide a breakdown of Hate Crimes by Offense Type

Arson	Year	On-Campus	Residential Facilities	Non-Campus Property	Public Property	Total
Race	2010	0	0	0	0	0
	2011	0	0	0	0	0
	2012	0	0	0	0	0
Gender	2010	0	0	0	0	0
	2011	0	0	0	0	0
	2012	0	0	0	0	0
Religion	2010	0	0	0	0	0
	2011	0	0	0	0	0
	2012	0	0	0	0	0
Sexual Orientation	2010	0	0	0	0	0
	2011	0	0	0	0	0
	2012	0	0	0	0	0
Ethnicity	2010	0	0	0	0	0
	2011	0	0	0	0	0
	2012	0	0	0	0	0
Disability	2010	0	0	0	0	0
	2011	0	0	0	0	0
	2012	0	0	0	0	0

Larceny-Theft	Year	On-Campus	Residential Facilities	Non-Campus Property	Public Property	Total
Race	2010	0	0	0	0	0
	2011	0	0	0	0	0
	2012	0	0	0	0	0
Gender	2010	0	0	0	0	0
	2011	0	0	0	0	0
	2012	0	0	0	0	0
Religion	2010	0	0	0	0	0
	2011	0	0	0	0	0
	2012	0	0	0	0	0
Sexual Orientation	2010	0	0	0	0	0
	2011	0	0	0	0	0
	2012	0	0	0	0	0
Ethnicity	2010	0	0	0	0	0
	2011	0	0	0	0	0
	2012	0	0	0	0	0
Disability	2010	0	0	0	0	0
	2011	0	0	0	0	0
	2012	0	0	0	0	0

The following tables provide a breakdown of Hate Crimes by Offense Type

Simple Assault	Year	On-Campus	Residential Facilities	Non-Campus Property	Public Property	Total
Race	2010	0	0	0	0	0
	2011	0	0	0	0	0
	2012	0	0	0	0	0
Gender	2010	0	0	0	0	0
	2011	0	0	0	0	0
	2012	0	0	0	0	0
Religion	2010	0	0	0	0	0
	2011	0	0	0	0	0
	2012	0	0	0	0	0
Sexual Orientation	2010	0	0	0	0	0
	2011	0	0	0	0	0
	2012	0	0	0	0	0
Ethnicity	2010	0	0	0	0	0
	2011	0	0	0	0	0
	2012	0	0	0	0	0
Disability	2010	0	0	0	0	0
	2011	0	0	0	0	0
	2012	0	0	0	0	0

Intimidation	Year	On-Campus	Residential Facilities	Non-Campus Property	Public Property	Total
Race	2010	0	0	0	0	0
	2011	0	0	0	0	0
	2012	0	0	0	0	0
Gender	2010	0	0	0	0	0
	2011	0	0	0	0	0
	2012	0	0	0	0	0
Religion	2010	0	0	0	0	0
	2011	0	0	0	0	0
	2012	0	0	0	0	0
Sexual Orientation	2010	0	0	0	0	0
	2011	0	0	0	0	0
	2012	0	0	0	0	0
Ethnicity	2010	0	0	0	0	0
	2011	0	0	0	0	0
	2012	0	0	0	0	0
Disability	2010	0	0	0	0	0
	2011	0	0	0	0	0
	2012	0	0	0	0	0

The following tables provide a breakdown of Hate Crimes by Offense Type

Vandalism Of Property	Year	On-Campus	Residential Facilities	Non-Campus Property	Public Property	Total
Race	2010	0	0	0	0	0
	2011	0	0	0	0	0
	2012	0	0	0	0	0
Gender	2010	0	0	0	0	0
	2011	0	0	0	0	0
	2012	0	0	0	0	0
Religion	2010	0	0	0	0	0
	2011	0	0	0	0	0
	2012	0	0	0	0	0
Sexual Orientation	2010	0	0	0	0	0
	2011	0	0	0	0	0
	2012	0	0	0	0	0
Ethnicity	2010	0	0	0	0	0
	2011	0	0	0	0	0
	2012	0	0	0	0	0
Disability	2010	0	0	0	0	0
	2011	0	0	0	0	0
	2012	0	0	0	0	0

Fire Safety Report

Requirements

The Higher Education Opportunity Act (HEOA) requires two (2) new safety-related requirements on institutions that participate in federal student financial aid programs which follow:

Fire Log: Institutions must keep a fire log that states the nature of the fire, date, time, and general location of each fire in on-campus student housing facilities. Sacramento State complies with this rule by including all fire-related incidents in the Sacramento State Police Department Media Log. The public can also view the most recent 60 days of crime and fire-related incidents by visiting the public counter, located on the first floor of the Public Services Building or online at <http://www.csus.edu/aba/police/Media-Log.html>

Annual Fire Safety Report: Institutions with on-campus student housing facilities must publish annually a fire safety report that provides information on campus fire safety practices and standards. Sacramento State complies with this regulation by including all fire-related incidents at on-campus student housing facilities as part of the "Annual Security & Fire Safety Report." Information contained in this annual fire safety report includes: number and cause of fires at all on-campus student housing facilities; number of fire-related deaths; related injuries; value of fire-related property damage; information on evacuation procedures; fire safety education and training programs; fire safety systems in each student housing facility; number of regular mandatory supervised fire drills; and policies on portable electrical appliances, smoking and open flames.

If a fire occurs in any building, community members should immediately notify Public Safety by dialing 911 from a campus phone or (916) 278-6851. Sacramento State Police Department will initiate a response to the Sacramento Fire Department and can summon the fire department quickly through this method of communication.

The campus fire alarm systems alert community members of potential hazards. Community members are required to heed an activated fire alarm system, and evacuate a building immediately. Use the nearest available exit to evacuate the building. Gather outside at the Housing Quad/Lawn area in front of Dining Commons.

Community members should familiarize themselves with the exits in each building. Occupants should use the stairs to evacuate the building. If you are caught in the elevator, push the emergency phone button. The emergency phones in elevators on campus ring to a Sacramento State Police Department dispatcher.

Fire Protection Equipment/Systems

All residential buildings are equipped with fire detection and alarm systems which are monitored by Public Safety, 24 hours a day, 365 days a year.

The University reviews the current fire prevention system in the residence Halls and makes assessments as to whether future improvements are needed.

The University retrofitted existing ADA rooms in the American River Courtyard with fire alarm horns/strobes per State Fire Marshall direction.

Health and Safety Inspections

Members of the Housing staff conduct periodic inspections of all bedrooms, bathrooms and common areas. Residents are notified beforehand of the inspection process. The inspections are conducted to identify safety violations as well as conditions which may be detrimental to the health or well being of the wider residential community.

Of Record

The resident's electronic signature on the Housing Services Occupancy Agreement, required in order to take occupancy, signifies their acceptance of and responsibility for abiding by residential and University policies as provided through all printed publications, websites, e-mail and other vehicles. Specific Health and Safety policies and procedures are outlined in the *Residential Life Handbook* as well as the Occupancy Agreement.

Fire Safety Report

Definitions

Fire: Rapid oxidation of combustible material accompanied by heat, light and smoke of combustible material, which is found outside of its normal appliance, whether or not it is extinguished prior to arrival of emergency.

Fire-related Deaths: Number of persons who were fatalities because of a fire incident, including death resulting from a natural or accidental cause while involved in fire control, attempting a rescue, or persons escaping from the fire scene (an individual who dies within one (1) year of injuries sustained as a result of a fire).

Fire-related Injuries: Number of persons receiving injuries from fire-related incidents, including an injury from a natural or accidental cause who received medical treatment at a local medical facility. This includes first responders attempting to control the fire, attempting a rescue, or persons escaping from the fire scene. Persons may include students, faculty, staff, visitors, firefighters, or any other individuals.

Estimated U.S. Dollar Loss Related to Fire Incidents: Estimated total U.S. dollar loss of both contents and structure or property destroyed because of a fire incident, not loss of business.

Evacuation Procedures Posted: When a fire alarm is activated, evacuation is mandatory. DO NOT use elevators; evacuate the building using the nearest available exit. Gather outside at the Housing Quad/Lawn area in front of Dining Commons. to begin an accountability and assessment process.

Fire Alarms Monitored by Sacramento State: Fire alarms are monitored 24 hours a day, seven days a week, 52 weeks a year by Public Safety.

Buildings Equipped with Fire Alarm Systems and Smoke Detectors: Buildings that have functional fire alarm systems and smoke detectors installed.

Buildings Protected with Automatic Sprinkler System Throughout: Indicates an automatic sprinkler system protects all areas of a building.

Emergency Evacuation Drills *(formerly known as Fire Drills):*

The number of supervised scheduled drills or actual events at campus residence halls are facilitated and certified by Housing personnel. Various drills are conducted throughout the year to familiarize students and staff with emergency procedures and individual roles.

Fire Safety Training

All Resident Hall Staff are required to attend fire safety training under the direction of Environmental Health and Safety. Training is provided to the Resident Hall staff on an annual basis. As part of the training staff receive instructions on how to effectively use the proper fire extinguisher based on the type of fire.

Residential Hall life students receive fire safety information in their Residential Life Handbook. Residents are provided fire safety information and evacuation training at the beginning of the each semester during hall meetings.

Fire Safety training is provided to faculty, staff and students in various depths depending on the work they perform on campus. All employees receive basic training covering emergency procedures, i.e., exit routes, fire extinguisher/pull station locations and reporting procedures, through the campus Emergency Action training program. Emergency Action training is required for all employees when they are initially employed by the University, when their work location changes and every 3 years after. Employees who perform "hot work" (welding, cutting, etc.), electrical workers, and others whose work may involve ignition sources receive fire extinguisher training in addition to training covering how to prevent fires and recognize fire hazards.

Fire Safety Report

Fire Policies for On-Campus Student Housing Facilities

Portable Electrical Appliances: Hot plates, halogen lamps, immersion coils, air conditioners, freezers, dishwashers, washing machines, and open-coil appliances are prohibited in University residences as they pose a threat of electrical overload and/or fire.

Microwaves, computers, stereos, televisions, radios, irons, non-commercial hairdryers, and other similar appliances are permitted, unless specifically prohibited by the residence staff. All appliances must have a manufacturer's label that show the electrical ratings and listing by a nationally recognized testing laboratory (e.g., ETL, UL, etc.). We strongly recommend the use of surge protectors.

Microfridges are permitted. No more than one refrigerator less than 4.4 cubic feet may be installed per room.

Caution should be taken to prevent fire hazards resulting from excessive use of appliances and over-dependence on power strips and extension cords.

Lamps: *A Special Safety Advisory* – The use of halogen lamps is prohibited.

- Carefully read all safety instructions and warnings that accompany any lamp.
- Never use bulbs of a higher wattage or of a different style than is recommended by the manufacturer's instruction.
- Never remove or discard a bulb that is hot to the touch; don't try to operate a lamp that has damaged or missing parts.
- Do not place lamps near clothing, draperies, or bedding, as incidental contact with the lamp bulb could ignite the material. Keep lamps away from windows, bunk beds, and closets.
- NEVER place materials such as towels or clothing on top of lamps.
- Avoid placing lamps in location where they may be knocked over.
- Always remember to turn off or unplug any lamp when changing bulbs or when leaving your room/apartment.
- Taking proper precautions and guarding against potential hazards posed by lamps will help ensure community safety.

Smoking: All residence halls are designated as smoke-free. Smoking is prohibited in all residential buildings, and outdoors within 20 feet of windows and doors, 30 feet at American River Courtyard.

Open Flames: Fire or smoke producing articles, such as Bunsen burners, portable stoves, kerosene lamps, cut trees, incense and candles are prohibited in residence hall rooms. Possession of hibachis, barbecue grills, smokers, potpourri burning units or other fire-starting devices/substances is prohibited in residences.

Fire Safety Report

Reported Fires for 2010 by Building Location for All Sacramento State On-campus Residence Halls

Reported Fires Calendar Year 2010	Total Fires In Each Bldg.	# of Fires	Date	Time	Cause Of Fire	Number Of Injuries That Required Treatment At a Medi- cal Facility	Number Of Deaths Related To Fire	Value of Property Damage Caused By Fire	Case #
On Campus Residence Halls									
American River Courtyard	0	0	N/A	N/A	N/A	N/A	N/A	N/A	N/A
Desmond Hall	0	0	N/A	N/A	N/A	N/A	N/A	N/A	N/A
Draper Hall	0	0	N/A	N/A	N/A	N/A	N/A	N/A	N/A
Jenkins Hall	0	0	N/A	N/A	N/A	N/A	N/A	N/A	N/A
Sierra Hall	0	0	N/A	N/A	N/A	N/A	N/A	N/A	N/A
Sutter Hall	0	0	N/A	N/A	N/A	N/A	N/A	N/A	N/A
TOTALS	0	0							

2010 Residential Fire Safety Amenities by Building Location For All Sacramento State On-Campus Residence Halls

Residential Fire Safety Amenities--Calendar Year 2010	Fire Alarms Monitored By Public Safety 24/7/365	Bldg. Equipped With Full Sprinkler System	Bldg. Has Fire Alarms & Smoke Detectors	Evacuation Plans Posted & Fire Safety Training Con- ducted	Number of Evacuation Drills Con- ducted Each Academic Year
On Campus Residence Halls					
American River Courtyard	X	X	X	X	4
Desmond Hall	X		X	X	4
Draper Hall	X		X	X	4
Jenkins Hall	X		X	X	4
Sierra Hall	X		X	X	4
Sutter Hall	X		X	X	4
TOTALS					24

Fire Safety Report

Reported Fires for 2011 by Building Location for All Sacramento State On-campus Residence Halls

Reported Fires Calendar Year 2011	Total Fires In Each Bldg.	# of Fires	Date	Time	Cause Of Fire	Number Of Injuries That Required Treatment At a Medi-cal Facility	Number Of Deaths Related To Fire	Value of Property Damage Caused By Fire	Case #
On Campus Residence Halls									
American River Courtyard	0	0	N/A	N/A	N/A	N/A	N/A	N/A	N/A
Desmond Hall	1	1	4/29/11-4/30/11	2130-0015	*Arson	N/A	N/A	N/A	11323
Draper Hall	1	1	4/25/11	0430-0500	** Arson	N/A	N/A	\$1,453	11302
Jenkins Hall	0	0	N/A	N/A	N/A	N/A	N/A	N/A	N/A
Sierra Hall	0	0	N/A	N/A	N/A	N/A	N/A	N/A	N/A
Sutter Hall	0	0	N/A	N/A	N/A	N/A	N/A	N/A	N/A
TOTALS	2	2				0	0	\$1,453	

*Intentional / Trash burned in stairwell.

**Intentional/ Fire in a toilet.

2011 Residential Fire Safety Amenities by Building Location For All Sacramento State On-Campus Residence Halls

Residential Fire Safety Amenities-Calendar Year 2011	Fire Alarms Monitored By Public Safety 24/7/365	Bldg. Equipped With Full Sprinkler System	Bldg. Has Fire Alarms & Smoke Detectors	Evacuation Plans Posted & Fire Safety Training Conducted	Number of Evacuation Drills Conducted Each Academic Year
On Campus Residence Halls					
American River Courtyard	X	X	X	X	4
Desmond Hall	X		X	X	4
Draper Hall	X		X	X	4
Jenkins Hall	X		X	X	4
Sierra Hall	X		X	X	4
Sutter Hall	X		X	X	4
TOTALS					24

Fire Safety Report

Reported Fires for 2012 by Building Location for All Sacramento State On-campus Residence Halls

Reported Fires Calendar Year 2012	Total Fires In Each Bldg.	# of Fires	Date	Time	Cause Of Fire	Number Of Injuries That Required Treatment At a Medical Facility	Number Of Deaths Related To Fire	Value of Property Damage Caused By Fire	Case #
On Campus Residence Halls									
American River Courtyard	0	0	N/A	N/A	N/A	N/A	N/A	N/A	N/A
Desmond Hall	0	0	N/A	N/A	N/A	N/A	N/A	N/A	N/A
Draper Hall	0	0	N/A	N/A	N/A	N/A	N/A	N/A	N/A
Jenkins Hall	0	0	N/A	N/A	N/A	N/A	N/A	N/A	N/A
Sierra Hall	0	0	N/A	N/A	N/A	N/A	N/A	N/A	N/A
Sutter Hall	0	0	N/A	N/A	N/A	N/A	N/A	N/A	N/A
TOTALS	0	0							

2012 Residential Fire Safety Amenities by Building Location For All Sacramento State On-Campus Residence Halls

Residential Fire Safety Amenities–Calendar Year 2012	Fire Alarms Monitored By Public Safety 24/7/365	Bldg. Equipped With Full Sprinkler System	Bldg. Has Fire Alarms & Smoke Detectors	Evacuation Plans Posted & Fire Safety Training Conducted	Number of Evacuation Drills Conducted Each Academic Year
On Campus Residence Halls					
American River Courtyard	X	X	X	X	4
Desmond Hall	X		X	X	4
Draper Hall	X		X	X	4
Jenkins Hall	X		X	X	4
Sierra Hall	X		X	X	4
Sutter Hall	X		X	X	4
TOTALS					24



SACRAMENTO
STATE

Jeanne Clery Disclosure of Campus Security Policy and Crime Statistics Act and Campus Fire Safety Right-To-Know Act Notification • September 2013

In compliance with the Jeanne Clery Disclosure of Campus Security Policy and Campus Crime Statistics Act and the Campus Fire Safety Right-To-Know Act, Sacramento State has made statistics and information available online at <http://www.csus.edu/police/cleryact.htm>. The Sacramento State Police Department collects crime statistics from local and appropriate police agencies, gathers information from multiple sources both on and off campus, and prepares the report. Crimes reported on campus, in certain off-campus buildings, or property owned or controlled by Sacramento State and on public property within or immediately adjacent to and accessible from the campus during the last three years are included. The report includes fire safety statistics and information, institutional policies concerning campus security, alcohol and drug use, crime prevention, the reporting of crimes, sexual assault and other safety matters. During the fall semester of every year, information is emailed to all enrolled and prospective students, faculty and staff. In addition, all CSU employees receive a notice concerning this information on their August paycheck. Print copies are available in the University Library, Police Service Center located in the University Union and by request from the Office of Public Safety and the Office of the Vice President for Student Affairs.

**Please visit the Emergency Notification System (ENS)
sign-up page at www.csus.edu/ens to be able to receive**