

**2001-02
FACULTY SENATE
California State University, Sacramento**

**AGENDA
Thursday, September 6, 2001
Mendocino 1005
3:00-5:00 p.m.**

**NOTE: CHANGE IN
MEETING LOCATION**

**SPECIAL MEETING
FACULTY GOVERNANCE ORIENTATION MEETING
For
NEW, CONTINUING and ALTERATE SENATORS
And
An Open Invitation to All Members of the University Community**

1. University governance and the role of the Faculty Senate
2. Senate Structure
3. Responsibilities of Senator
4. Senate meetings:
 - a. The agenda
 - b. The role of the Senate Chair
5. Parliamentary procedures – the basics
6. Questions

Note: Handouts will be provided at the meeting.

Senate Home Page: <http://www.csus.edu/acse/>

California State University, Sacramento
2001-2002 FACULTY SENATE
(66-70 Voting Members / 7 Non-voting Ex Officio Senators)

EXECUTIVE COMMITTEE

<i>Voting Members</i>	<i>Department/Program - College</i>	<i>Email and phone</i>
Joan Bauerly At-large member	English Arts and Letters	bauerly@csus.edu 8-5732
Jean Pierre Bayard At-large member	Electrical and Electronic Engineering Engineering and Computer Science	bayardj@gaia.ecs.csus.edu 8-5847
Bob Buckley Faculty Senate Chair	Computer Science Engineering and Computer Science	buckley@csus.edu 8-6012 or 8-7324
Art Jensen Faculty Senate Vice Chair	Management Business Administration	jensena@ns.net 8-6642
Tom Kando Curriculum Policies Committee Chair	Sociology Social Science & Interdisciplinary Studies	kandotom@csus.edu 8-6694
Dick Kornweibel GEP/GRC Chair	History Arts & Letters	kornweibelr@csus.edu 8-7209
Tom Krabacher Academic Policies Chair	Geography Natural Sciences & Math	krabacherts@csus.edu 8-6338
Bonnie Raingruber At-large member	Nursing Health & Human Services	walkerbj@csus.edu 8-5417
Louise Timmer Faculty Policies Committee Chair	Nursing Health and Human Services	timmerlf@csus.edu 8-5073
<i>Non-voting Members</i>		
Artemio Pimentel ASI Representative	ASI President Associated Students, Inc.	pimentel@csus.edu 8-6784
Cristy Jensen Statewide Academic Senate	Public Policy & Administration Social Science & Interdisciplinary Studies	jensenca@csus.edu 8-5955
<i>Faculty Senate Office Staff</i>		
Cheryl Johnson	8-6593	cjohnson@csus.edu
Carolyn Duran	8-6593	durancs@csus.edu

Academic Policies Committee

- Reviews and recommends policy concerning academic standards and instructional services
- Formulates academic policies in the area of student life
- Administers procedures to hear student appeals from administration decisions arising from application of these policies

Curriculum Policies Committee

- Review and make recommendations regarding changes to courses, programs and new courses and programs
- Conduct program reviews and forward recommendations to Faculty Senate and Academic Affairs

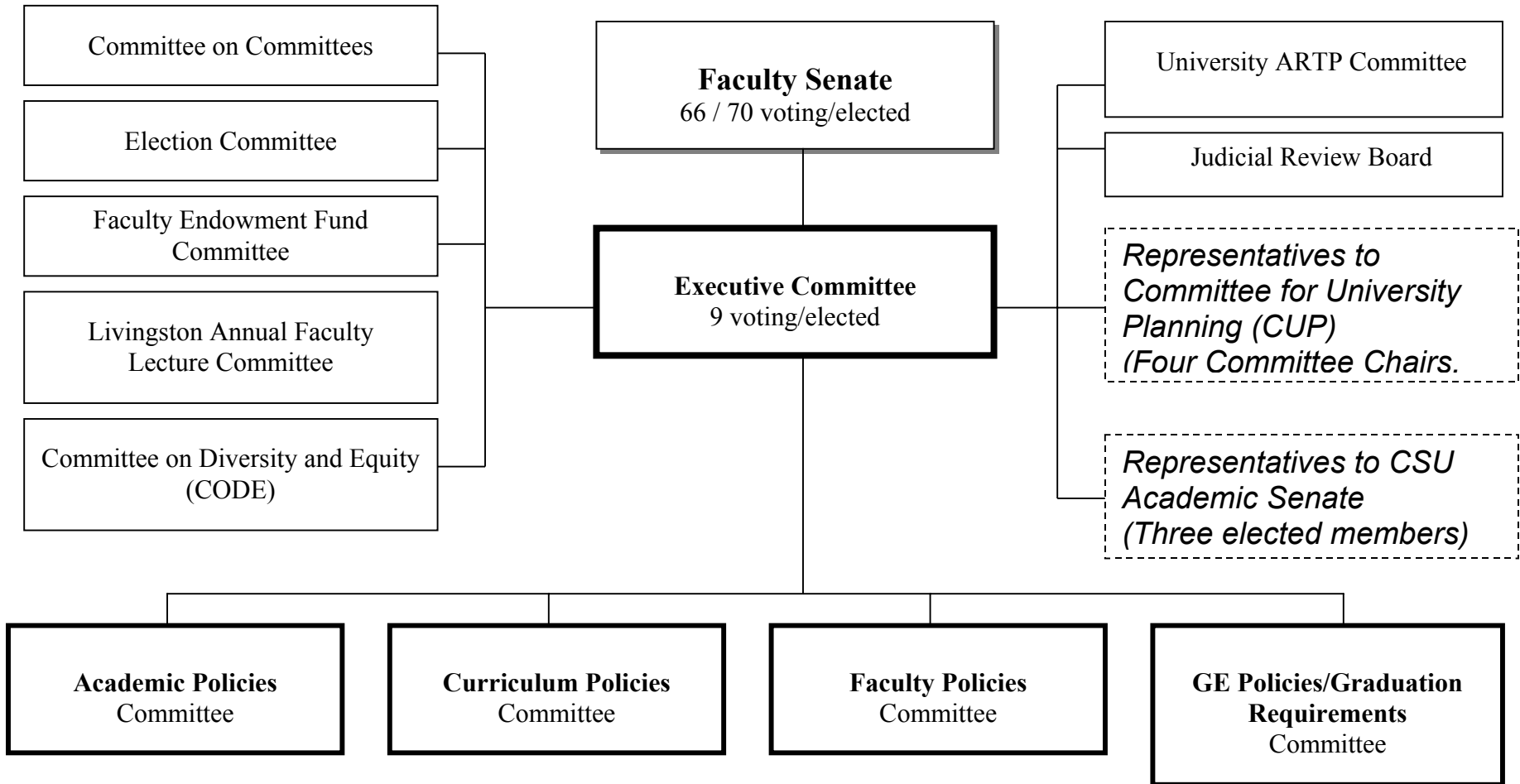
Faculty Policies Committee

- Areas of responsibility include professional development, professional standards, diversity, research and creative activities, faculty award programs, and other faculty policy matters

General Education Policies / Graduation Requirements Committee

- Areas of responsibility include the General Education Program and Graduation Requirements

**2001-2002 Faculty Senate
Organization**
California State University, Sacramento



Academic Standards
Subcommittee
Readmission Subcommittee

Subcommittee for
Curriculum
Subcommittee for Program
Review
University Teacher
Education
Subcommittee
Writing and Reading
Subcommittee

Center for Teaching and
Learning
Pedagogy Enhancement
Subcommittee
Research and Creative
Activities Committee
Visiting Scholars
Subcommittee

GE Course Review
Subcommittee