

Asian Americans in World War II: From Racism to Valor & Honor

Presented at
APISA, UC Office of the President
17 November 2014



James Sobredo, Ph.D.
Associate Professor,
Asian American Studies
Ethnic Studies Department
www.csus.edu/aas/sobredo/

Asian American History: Migration, Race, & Exclusion

- 1882 Chinese Exclusion Act
 - Labor option = Japanese/Indian immigration
- 1907-1908 Gentlemen's Agreement
 - Labor option = Filipino immigration
- 1934 Tydings-McDuffie Act
 - Labor option = Whites & Mexicans
- TOTAL EXCLUSION OF ASIANS

Dr. Sobredo

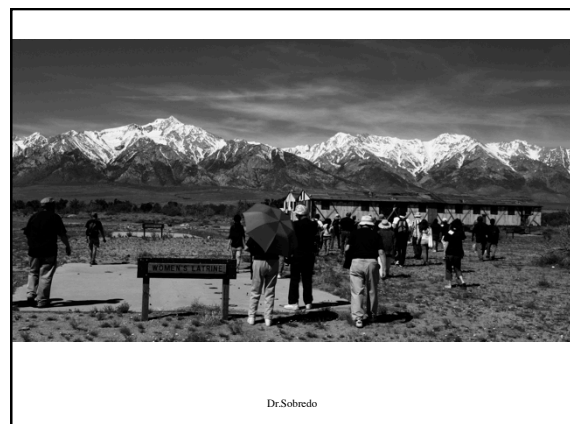
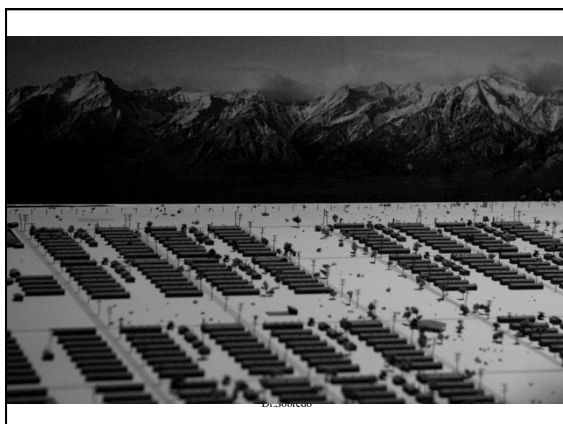
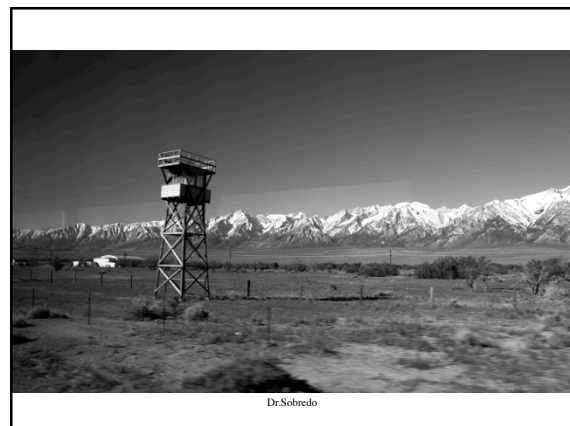
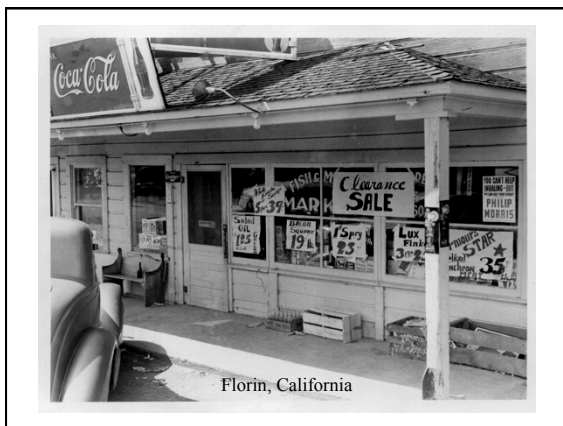
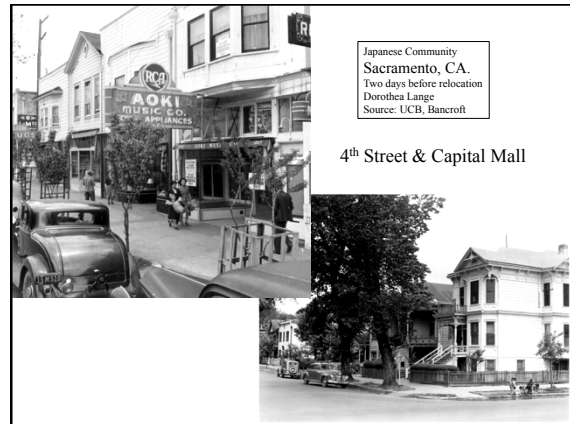


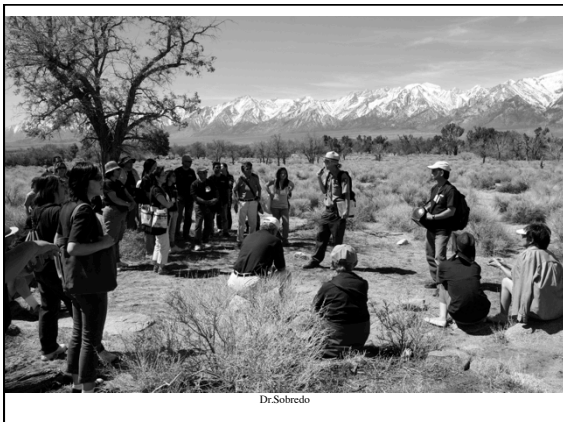
Dorothea Lange, SF



Source: <http://orpheus.ucsd.edu/speccoll/dspolitic/pm/11212cs.jpg>







442nd Combat Team, Camp Shelby, Mississippi

Dr. Sobredo

Japanese Americans

- Hawaii National Guard: 1,432 JAs
- Shipped to Oakland on SS Maui (Matson line)
- 100th Infantry Battalion (12 June '42)
- Training: Camp McCoy (WI) & Camp Shelby (MI)
- Combat in Italy
- 21 received Medals Honor
- Mainland JAs: 3,800
- 442nd Regimental Combat Team
 - Hawaii: 3,000
 - Mainland: 800
- Joined 100th in Italy
- 100/442 RCT
- “Purple Heart Battalion”
- Presidential Unit Citation

Dr. Sobredo



1st & 2nd Filipino Infantry Regiments

- Dr. Alex Fabros
- Activated in Salinas
- Activated in Ft. Ord
- Camp Roberts
 - Mission San Miguel
 - I-5 & Hwy 101)
- Camp Beale
 - 40 miles north of Sacramento,
 - 10 miles near Yuba City/ Marysville)



Photo: Dr. Alex Fabros

Camp Beale

California State Military Department
The California State Military Museum
A United States Army Museum Activity
Preserving California's Military Heritage

Historic California Posts
Beale Air Force Base
(Camp Beale, Camp Beale Chemical Warfare Service Depot, Camp Beale Quartermaster Depot)



Light Tanks of the 13th Armored Division training at Camp Beale

Beale is home of the 9th Reconnaissance Wing, and is also considered by many to be one of the show places of the United States Air Force. A base steeped in history, it is in the forefront of the Air Force's future in high technology. Beale is located in northern California about 10 miles east of the towns of Marysville and Yuba City and about 40 miles north of Sacramento, the state capital. Beale is a large base in terms of land and has five gates providing access on all sides of the base.

Source: "Filipinos had to fight for right to serve their adopted home," SF Chronicle, 25 May 2005.

Pacita Todtod

- Organized effort to allow FAs to join US Army
- Organized Filipinos & a letter campaign to Secretary of War Henry Stinson
- Revised 1942 Selective Service Act (Signed by FDR)
- FAs can now serve in US Army
- Became FA community leader
- USO singer & film actor: "They were Expendable" (John Wayne)



Filipinos had to fight for right to serve their adopted home

[Back to Article](#) | [Buy Photos](#) | [More Photo Galleries](#)

5 of 5



Pacita Todtod Bobadilla, 85, looks back on her activism. Chronicle photo by Darryl Bush
Photo: Darryl Bush / SFC

1st & 2nd Filipino Infantry Regiments

- Unit Battalion formed 1942: Camp San Luis Obispo
- Commander: Lt. Col. Robert H. Offley
 - Served in Philippines, spoke passable Tagalog
- Reached Regimental strength (2,000)
 - Transferred to Salinas & more FAs joined unit
- 1st Filipino Infantry Regiment (Camp Beale)
- 2nd Filipino Infantry Regiment (Camp Cooke)
- Filipino Naturalization rights granted

Camp Beale: 1943 Mass Swearing 1,000 Filipinos become US Citizens



Demographics & Duties

- Demographics
 - "manongs" from Mainland California
 - Young men from Hawaii
- Reconnaissance (commandos)
 - Dropped behind enemy lines via submarine
 - Monitor and track enemy movement
 - Signal observations back to headquarters
 - Major goal: avoid detection
- Mop up operations
 - Clear areas of enemy combatants

Sgt. Leon Giron

PBS "Untold Triumph"
National Broadcast, May 2005



Sgt. Leo Giron, US Army

- Bayambang, Pangasinan
- Arrived in US 1926
- 15-yr old farm worker
- Legionario del Trabajos
- Continued training BNMA in farmlands
- WW2 = 1942 US Army

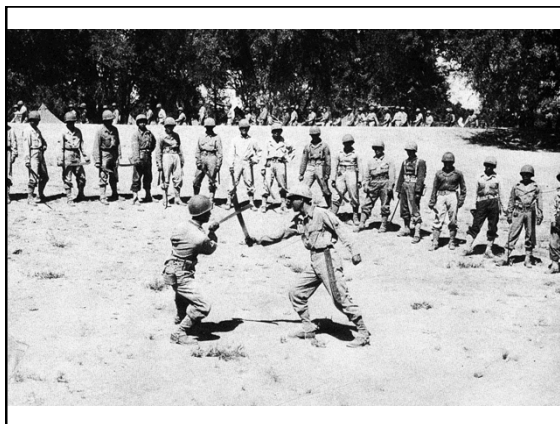


Photo # 19-N-63569 USS Stingray off San Francisco, California, 26 January 1944



Untold Triumph (PBS) Sac State premier (Nov. 2004)



PBS Film: "Untold Triumph"

- Sgt. Domingo Los Banos (Hawaii)
- National Broadcast:
– May 2005
- Filmed in Hawaii and California (Stockton, SF, Elk Grove)



Salamat Gid
Maraming Salamat
Muchas gracias
Si Yu'us ma'ase
Thank you

csus.edu/aas/sobredo



Dr. Sobredo