

Bass Part

# Sugar Ray

Medium Swing

F min7 B7 B<sup>b</sup>7

Phineas Newborn

5

B<sup>b</sup> A<sup>b</sup> G A<sup>b</sup> G C min

9

B<sup>b</sup> min7 E<sup>b</sup>7(b9) A<sup>b</sup>7 (opt. walk)

13

17

A 13sus4 A 13 A<sup>b</sup>7 A<sup>o</sup>7 E<sup>b</sup>/B<sup>b</sup> C 7(#9)

21

F min7 E<sup>b</sup>/G A<sup>b</sup> B<sup>b</sup>7 A7 A<sup>b</sup>7 G7 A<sup>b</sup>Maj7 G Maj7 G<sup>b</sup>Maj7 F Maj7 E Maj7

25

1. E<sup>b</sup>Maj7 2. E<sup>b</sup>Maj7 C 7(#9)

To Solos

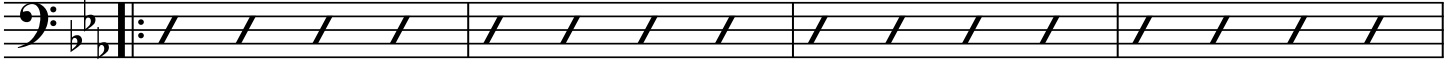
*fine*

2

SOLOS

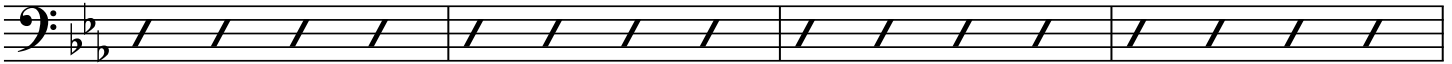
( Bmin7 E7 )

27 F7 Fmin7 Bb7 EbMaj7 Ab7 G7 C7

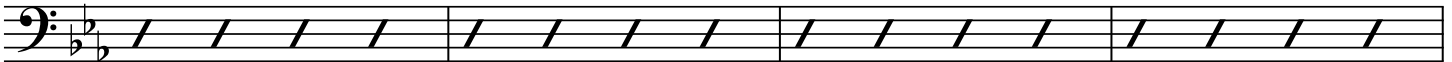


( Dm7(b5) G7 )

31 Bb Ab G7 Cmin7 F7 Bbmin7 Eb7



35 Ab7 A°7 Eb/Bb G7/B C7



2nd x ( Fmin7 Bb7 Eb )

39 F7 Bb7 C7

*D.C. al 2nd ending last x*

