

# Written Assignment #4

ALT SCALE (sometimes called DIMINISHED WHOLE TONE)

7th mode of ascending C# melodic minor

MIXOLYDIAN #4 (LYDIAN DOMINANT)

1. Alt. Scale is used when a V7 chord resolves to a major or minor chord. (i.e. G7 - CMaj7 or G7 - Cm6)
2. Mix #4 (Lyd Dom) is typically used on "freestanding dominant 7th's. (i.e. CMaj7 - Bb7 - CMaj7)  
Anytime a dominant chord resolves down by 1/2 step, lydian dominant is typically the best choice.  
(i.e. Dmin7 - Db7 - CMaj7)

*Note: These are general rules and players often ignore them for a variety of reasons.*

Compose a melody over the given harmonic progressions. Use the appropriate scales for the dominant chords. In general, try making the line resolve to a chord tone by stepwise motion. Use some of the transcriptions as models. Most bop type solos are step wise motion with occasional leaps the resolve stepwise. Work in some the ideas we've discussed and analyzed in class.

F Maj7                      D7                      G min7                      C7

A min7                      A b9(#11)                      G min7                      C7

F Maj7

**Make sure you sing or play your melodies so you can hear whether it works.**

B $\flat$ Maj7

A m7( $\flat$ 5)

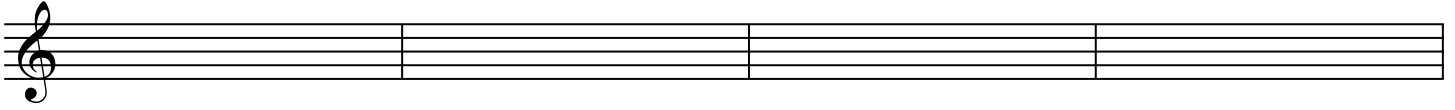
D7( $\flat$ 9)

G min7

G $\flat$ 7

F min7

B $\flat$ 7



E $\flat$ Maj7

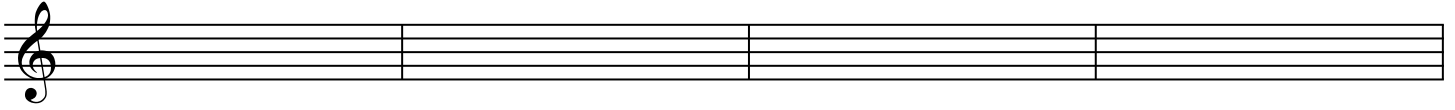
A $\flat$ 7

D min7

G7

C min7

F7



B $\flat$ Maj7

