

Due Date: See due dates handout.

Written Assignment #1

Compose two choruses over the given blues changes. Incorporate ideas from Wynton Kelly's solo, phrases from transcription assignment and ideas discussed in class. **Be prepared to play or sing your solo.**

B^b7



E^b7

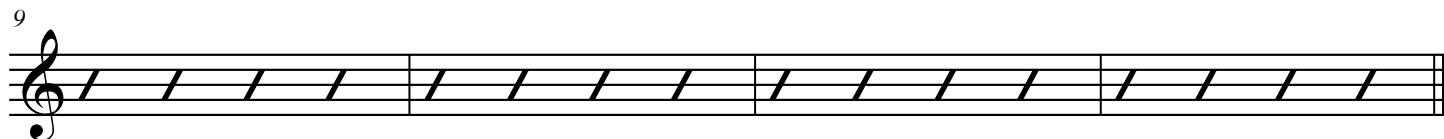
B^b7



F7

E^b7

A^b7



Notation suggestions:

1. In general, use sharps for ascending chromatic lines and flats for descending lines.
For example: D - D# - E not D - Eb - E natural.
2. In 4/4 time, make sure beat 3 is visible. Exception: consecutive upbeats for a measure or more.
3. Always include the chord changes above the melody.
4. If possible, try to group measures in 4's.
5. Observe proper stem directions.
6. If you want a note short and it is on a downbeat, use a quarter note and write a staccato marking above the note.
7. Whenever possible, use half note rests rather than two quarter rests.
8. Beam eighth notes in groups of 4.