

The logo consists of the letters 'ESS' in a large, bold, serif font. The letters are light blue and are set against a solid dark blue rectangular background. The 'E' is on the left, and the two 'S's are on the right, with the first 'S' being larger than the second.

**The ACT Evaluation/Survey Service**  
For Educational Institutions and Agencies

**ACT™**

*Entering Student Survey Graphics Report*  
*for*  
*CALIFORNIA STATE UNIVERSITY*  
*Code: 0382*

*Prepared by ACT Survey Research Services*  
*April 24, 2007*

**Entering Student Survey Graphics Report**  
**For**  
**CALIFORNIA STATE UNIVERSITY**

*Prepared by ACT Survey Research Services*  
*04/24/07*

---

*This report provides graphical information for selected demographic items (e.g., age, race/ethnicity, sex) for your college and for a national normative sample. For all Likert scale items (e.g., 5-point Satisfaction scale), data are displayed for your institution's top and bottom five items as well as the five items with the greatest and least differences for your institution in comparison with national normative data. Please note percentages may not add to 100 due to the effect of rounding.*

*The "National Norms" used in this report are based on 33,903 student records from 37 **public** postsecondary institutions that administered the ACT Entering Student Survey between August 1, 2002 and July 31, 2006. Normative data of this type are often referred to as "user norms," because they simply represent a composite of the data obtained by a number of institutions that administered the instrument during a particular period of time. See the "Normative Data Report" for the Entering Student Survey for more information concerning the nature of the national norms sample.*

*For more information about the ACT Evaluation/Survey Service, contact the ACT Survey Services staff listed below.*

**Ordering Surveys**

*ESS Customer Service  
319/337-1893 (fax) 319/337-1467*

**Survey Scanning and Reporting**

*ESS Production Services  
319/337-1186 (fax) 319/337-1578*

**Discussing research related issues (e.g., sampling, subgroup selection, item construction, etc.), survey administration, specialized services and materials**

*Randy McClanahan  
Senior Research Associate  
319/337-1440  
Randy.McClanahan@act.org*

*Vi Bitterman  
Program Coordinator  
319/337-1098  
Vi.Bitterman@act.org*

*(fax) 319/341-2284*

*Survey Research Services*

**Using report results for accreditation, outcomes assessment, and effectiveness measures**

*Educational Services  
319/337-1053  
outcomes@act.org  
(fax) 319/337-1790  
Postsecondary Services, Educational Services Division*

*ACT  
500 ACT Drive  
P.O. Box 168  
Iowa City, IA 52243-0168*

## ***Table of Contents***

---

<b><i>Section I, Item C: Age</i></b> .....	<b><i>1</i></b>
<b><i>Section I, Item D: Racial/Ethnic</i></b> .....	<b><i>2</i></b>
<b><i>Section I, Item E: Sex</i></b> .....	<b><i>3</i></b>
<b><i>Section I, Item I: High School Program of Study</i></b> .....	<b><i>4</i></b>
<b><i>Section I, Item K: High School GPA</i></b> .....	<b><i>5</i></b>
<b><i>Section I, Item L: Number of Students in Your High School Graduating Class</i></b> .....	<b><i>6</i></b>
<b><i>Section II, Item A: Reason to Continue Education After High School</i></b> .....	<b><i>7</i></b>
<b><i>Section II, Item B: Major Source of Funding for Postsecondary Education</i></b> .....	<b><i>8</i></b>
<b><i>Section III, College Impressions: Part A - Top &amp; Bottom 5 Items</i></b> .....	<b><i>9</i></b>
<b><i>Section III, College Impressions: Part A - Largest Positive &amp; Largest Negative Differences</i></b> .....	<b><i>10</i></b>
<b><i>Section III, College Impressions: Part B - Top &amp; Bottom 5 Items</i></b> .....	<b><i>11</i></b>
<b><i>Section III, College Impressions: Part B - Largest Positive &amp; Largest Negative Differences</i></b> .....	<b><i>12</i></b>
<b><i>Section III, Item C: Rating of this College When Applying for Admission</i></b> .....	<b><i>13</i></b>
<b><i>Section III, Item E: Major Source of Information About this College</i></b> .....	<b><i>14</i></b>

CALIFORNIA STATE UNIVERSITY

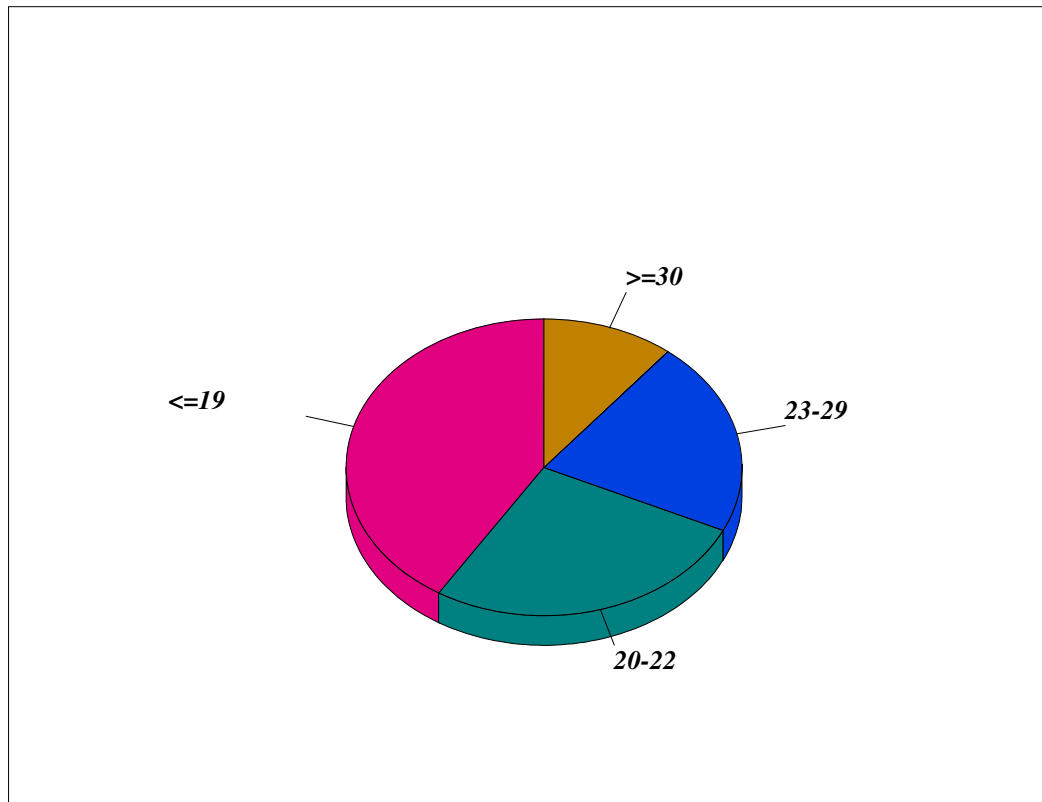


Figure 1. Section I - Background Information, Item C: Age

Age	Your Institution %	National Norms %
18 & Under	35.1	64.6
19	6.0	14.0
20	6.6	4.3
21	13.0	2.5
22	7.3	1.7
23 to 25	14.3	3.6
26 to 29	7.0	2.6
30 to 39	5.2	3.8
40 to 61	5.3	2.8
62 or Over	.2	.1
<=19	41.1	78.6
20-22	26.9	8.6
23-29	21.3	6.1
>=30	10.7	6.7

CALIFORNIA STATE UNIVERSITY

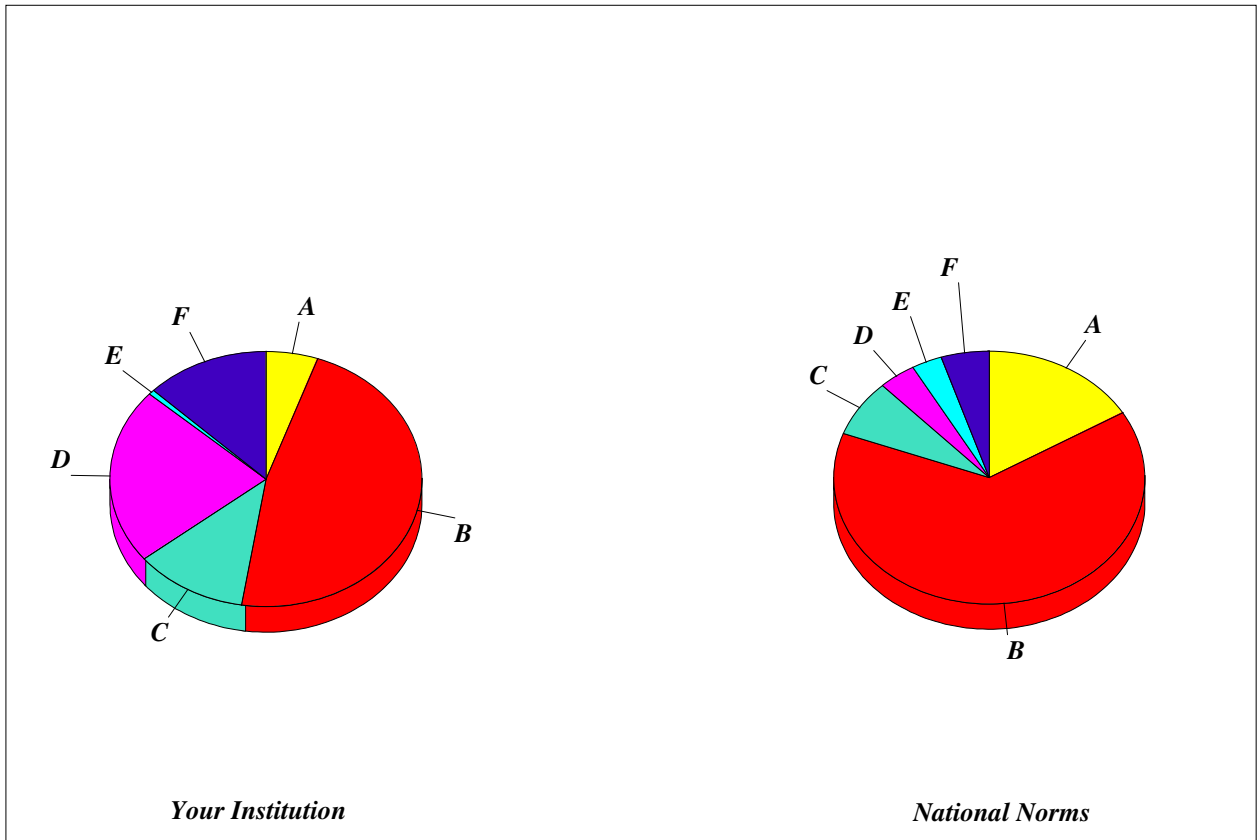


Figure 2. Section I - Background Information, Item D: Racial/Ethnic Group

<i>Race/Ethnicity</i>	<i>Your Institution %</i>	<i>National Norms %</i>
<i>African American or Black</i>	5.4	16.4
<i>Native American (Indian, Alaskan, Hawaiian)</i>	.6	3.2
<i>Caucasian or White</i>	47.1	64.3
<i>Mexican American, Mexican Origin</i>	10.2	4.4
<i>Asian American, Oriental, Pacific Islander</i>	22.4	3.8
<i>Puerto Rican, Cuban, Other Latino or Hispanic</i>	1.6	3.0
<i>Other</i>	6.2	2.4
<i>Prefer not to respond</i>	6.5	2.6
<b>A. Black</b>	5.4	16.4
<b>B. White</b>	47.1	64.3
<b>C. Hispanic</b>	11.7	7.3
<b>D. Asian</b>	22.4	3.8
<b>E. Native American</b>	.6	3.2
<b>F. Other/Prefer not to respond</b>	12.8	5.0

CALIFORNIA STATE UNIVERSITY

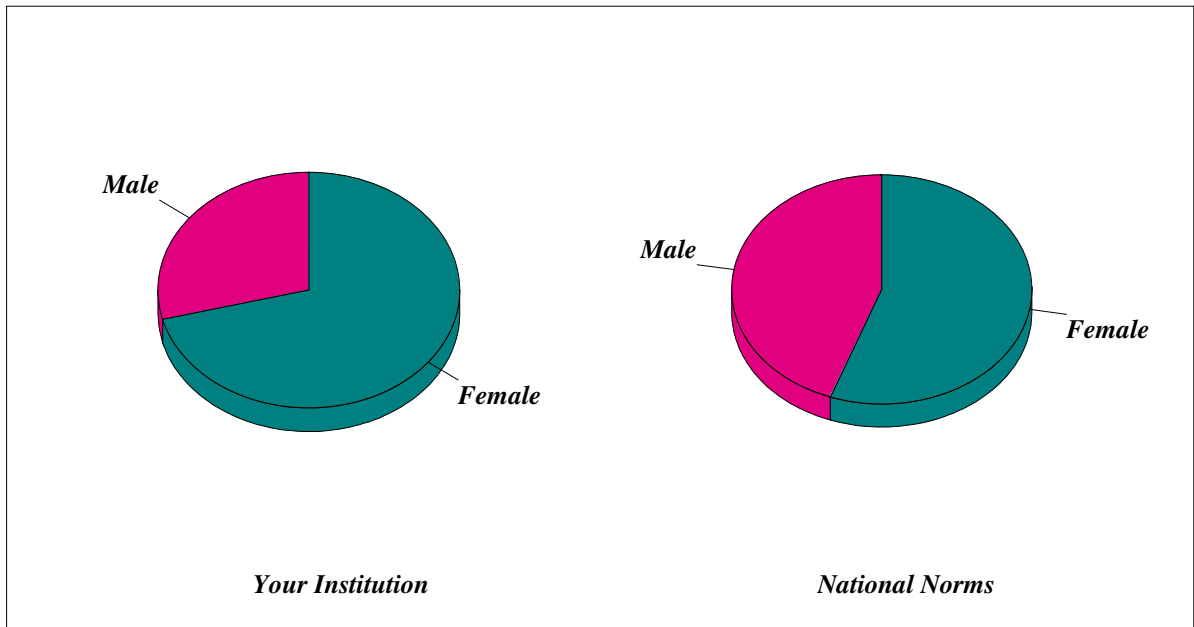


Figure 3. Section I - Background Information, Item E: Sex

<i>Sex</i>	<i>Your Institution %</i>	<i>National Norms %</i>
<i>Male</i>	<i>29.0</i>	<i>44.4</i>
<i>Female</i>	<i>71.0</i>	<i>55.6</i>

CALIFORNIA STATE UNIVERSITY

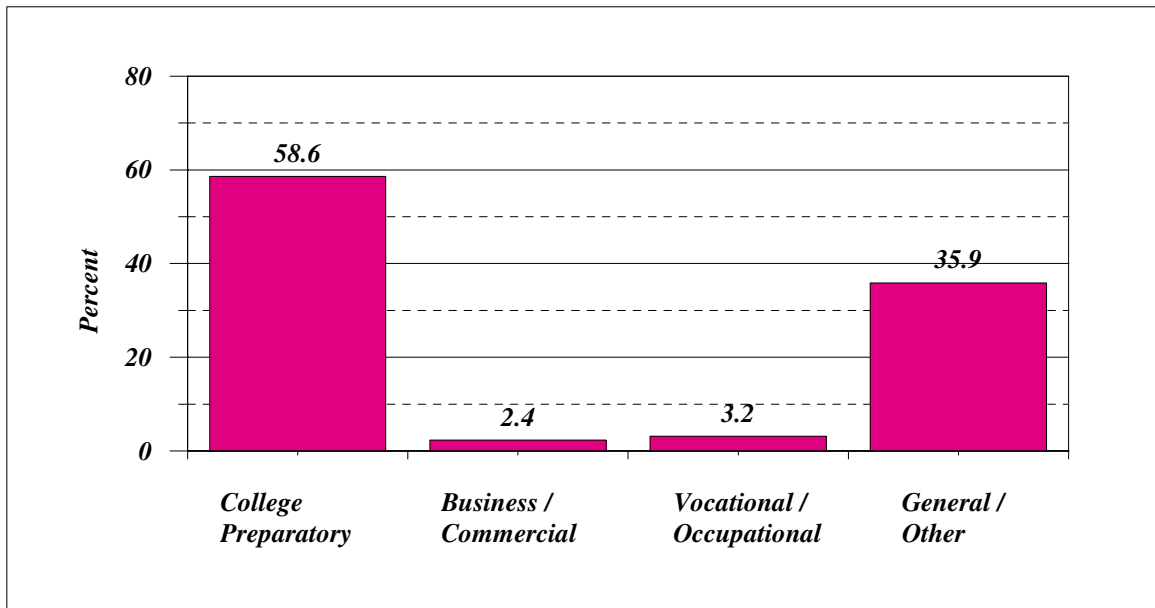


Figure 4. Section I - Background Information, Item I: High School Program of Study

<i>High School Program of Study</i>	<i>Your Institution %</i>	<i>National Norms %</i>
<i>College Preparatory</i>	<i>58.6</i>	<i>46.2</i>
<i>Business / Commercial</i>	<i>2.4</i>	<i>4.3</i>
<i>Vocational / Occupational</i>	<i>3.2</i>	<i>7.1</i>
<i>General / Other</i>	<i>35.9</i>	<i>42.4</i>

CALIFORNIA STATE UNIVERSITY

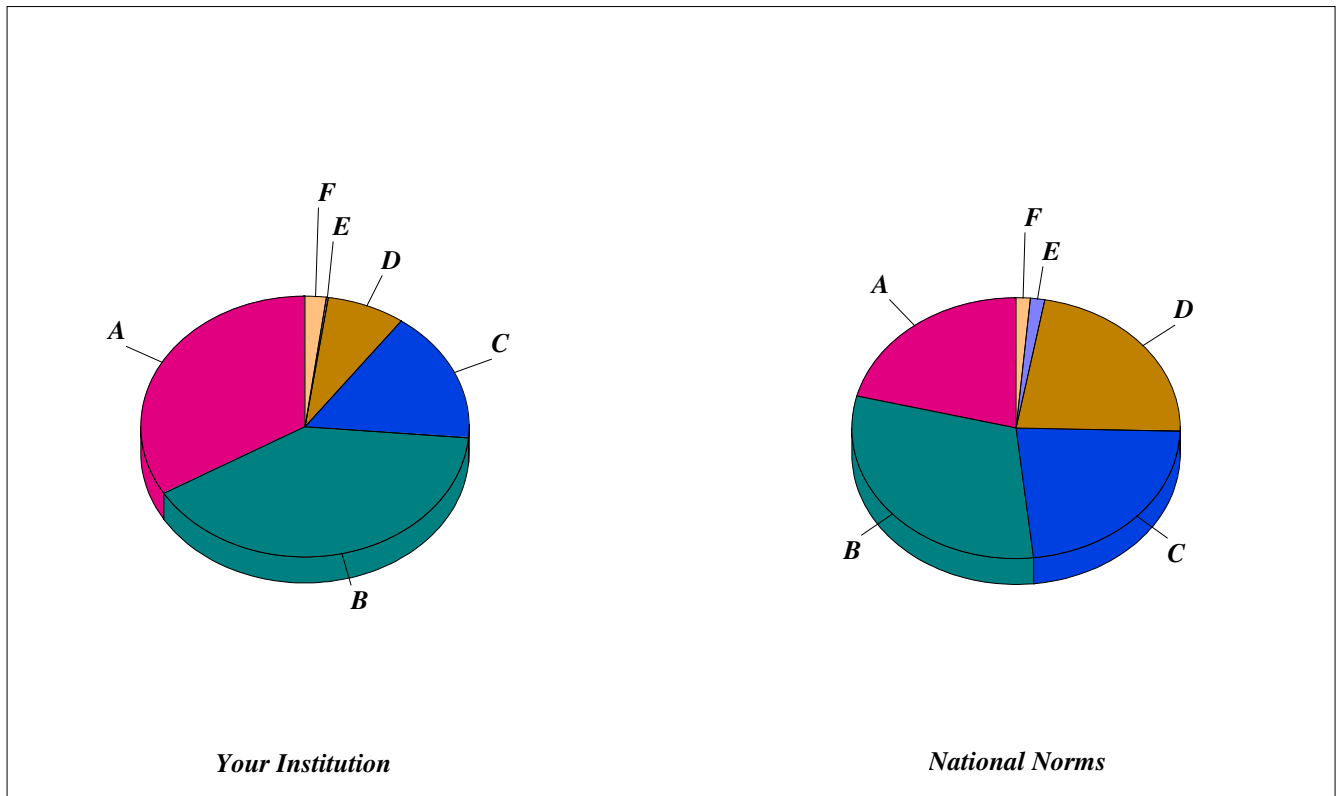


Figure 5. Section I - Background Information, Item K: High School GPA

GPA	Your Institution %	National Norms %
A to A- (4.0-3.5)	33.6	21.1
A- to B (3.49-3.0)	40.1	30.7
B to B- (2.99-2.5)	16.4	22.9
B- to C (2.49-2.0)	7.1	17.0
C to C- (1.99-1.5)	.6	5.6
C- to D (1.49-1.0)	.2	1.3
Below D (0.99-0.0)	.0	.2
Does Not Apply	2.1	1.4
A. A to A- (4.0-3.5)	33.6	21.1
B. A- to B (3.49-3.0)	40.1	30.7
C. B to B- (2.99-2.5)	16.4	22.9
D. B- to C- (2.49-1.5)	7.7	22.6
E. <=C- (<=1.49)	.2	1.4
F. Does Not Apply	2.1	1.4

CALIFORNIA STATE UNIVERSITY

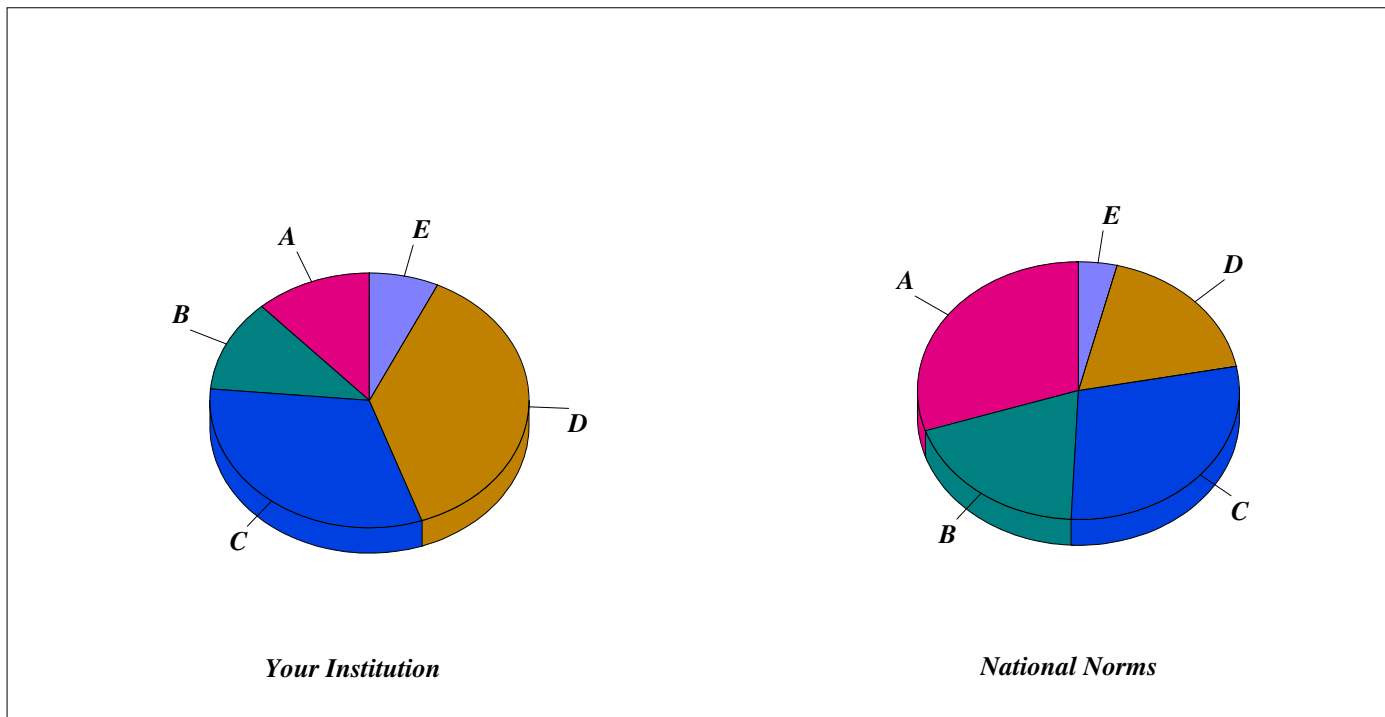


Figure 6. Section I - Background Information, Item L: Number of Students in Your High School Graduating Class

<i>Number of Students</i>	<i>Your Institution %</i>	<i>National Norms %</i>
<i>Fewer than 25</i>	<i>2.6</i>	<i>6.4</i>
<i>25 - 99</i>	<i>9.2</i>	<i>23.6</i>
<i>100 - 199</i>	<i>11.8</i>	<i>19.2</i>
<i>200 - 399</i>	<i>31.8</i>	<i>28.8</i>
<i>400 - 599</i>	<i>26.7</i>	<i>13.4</i>
<i>600 - 799</i>	<i>10.9</i>	<i>4.7</i>
<i>800 - 999</i>	<i>3.4</i>	<i>1.8</i>
<i>1000 or Over</i>	<i>3.6</i>	<i>2.0</i>
<i>A. &lt;= 99</i>	<i>11.8</i>	<i>30.1</i>
<i>B. 100 - 199</i>	<i>11.8</i>	<i>19.2</i>
<i>C. 200 - 399</i>	<i>31.8</i>	<i>28.8</i>
<i>D. 400 - 799</i>	<i>37.6</i>	<i>18.1</i>
<i>E. &gt;= 800</i>	<i>7.0</i>	<i>3.8</i>

CALIFORNIA STATE UNIVERSITY

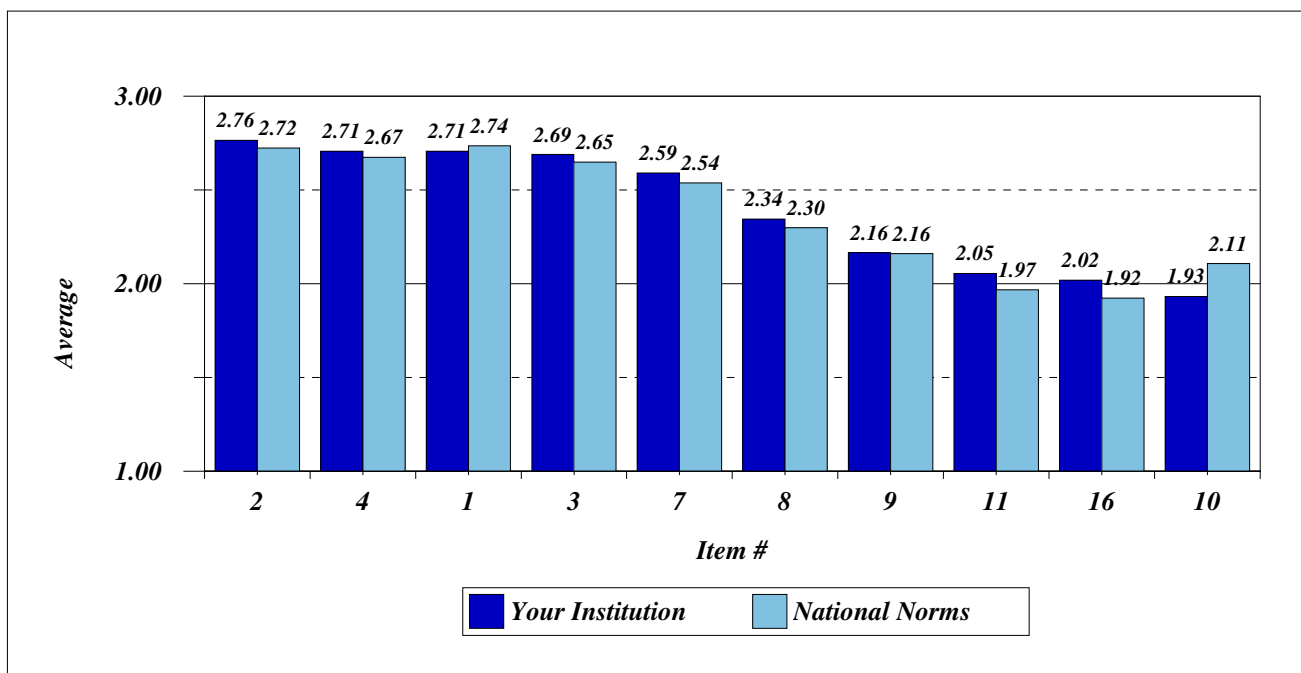


Figure 7. Section II - Item A: Reason to Continue Education after High School

Top 10 Item #'s		Your Institution Avg	National Norms Avg
2	To become a better-educated person	2.76	2.72
4	To qualify for a high-level occupation	2.71	2.67
1	To meet educational requirements for my chosen occupation	2.71	2.74
3	To increase my earning power	2.69	2.65
7	To develop my mind and intellectual abilities	2.59	2.54
8	To study new and different subjects	2.34	2.30
9	To develop personal maturity	2.16	2.16
11	To become a more cultured person	2.05	1.97
16	Parents and/or relatives wanted me to continue my education	2.02	1.92
10	To meet new and interesting people	1.93	2.11

(Reason Scale: 3=major reason, 2=minor reason, 1=not a reason)

CALIFORNIA STATE UNIVERSITY

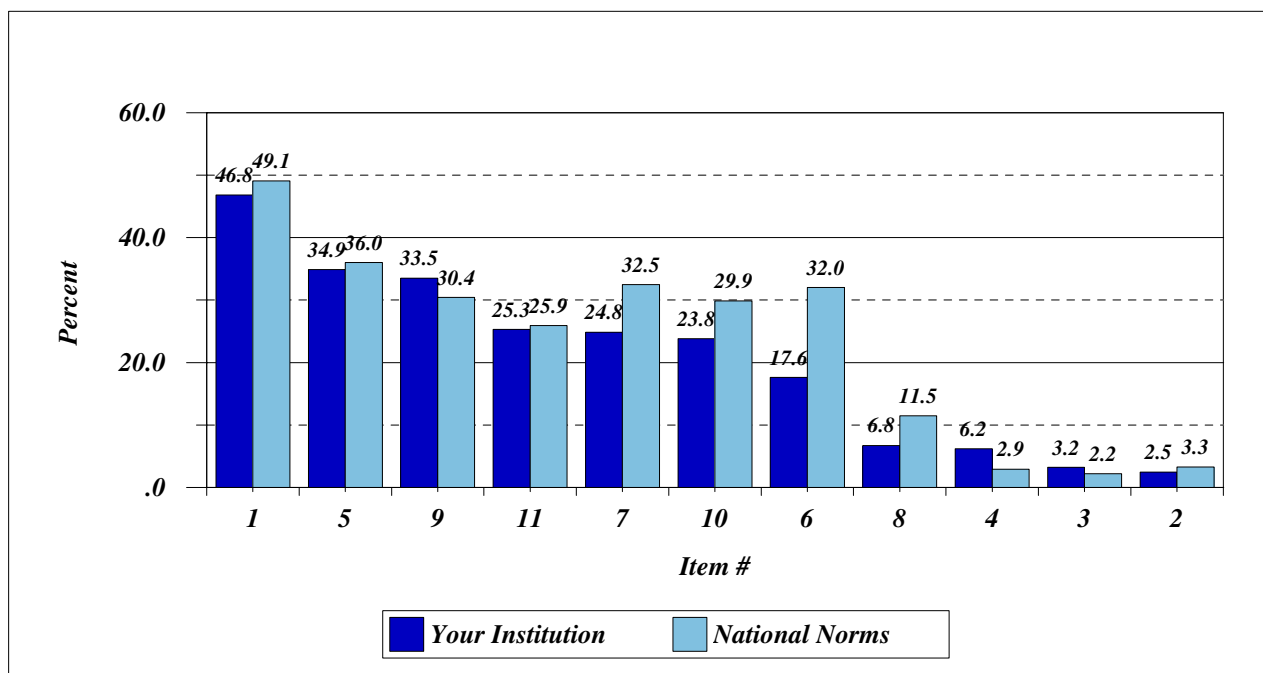


Figure 8. Section II - Item B: Major Source of Funding for Postsecondary Education

Item #		Your Institution %	National Norms %
1	Parents/Relatives	46.8	49.1
5	Educational Grants (Pell Grants, FSEOG, Private Grants, etc.)	34.9	36.0
9	Employment While Attending College (Including Work-Study)	33.5	30.4
11	Personal Savings	25.3	25.9
7	Student Loans (Perkins Loan, Federal Direct Loan, etc.)	24.8	32.5
10	Summer Employment	23.8	29.9
6	Scholarships (Private, Federal, College, etc.)	17.6	32.0
8	Other Loans (Bank Loans, etc.)	6.8	11.5
4	Spouse's Income	6.2	2.9
3	Veteran's Benefits	3.2	2.2
2	Social Security Benefits	2.5	3.3

CALIFORNIA STATE UNIVERSITY

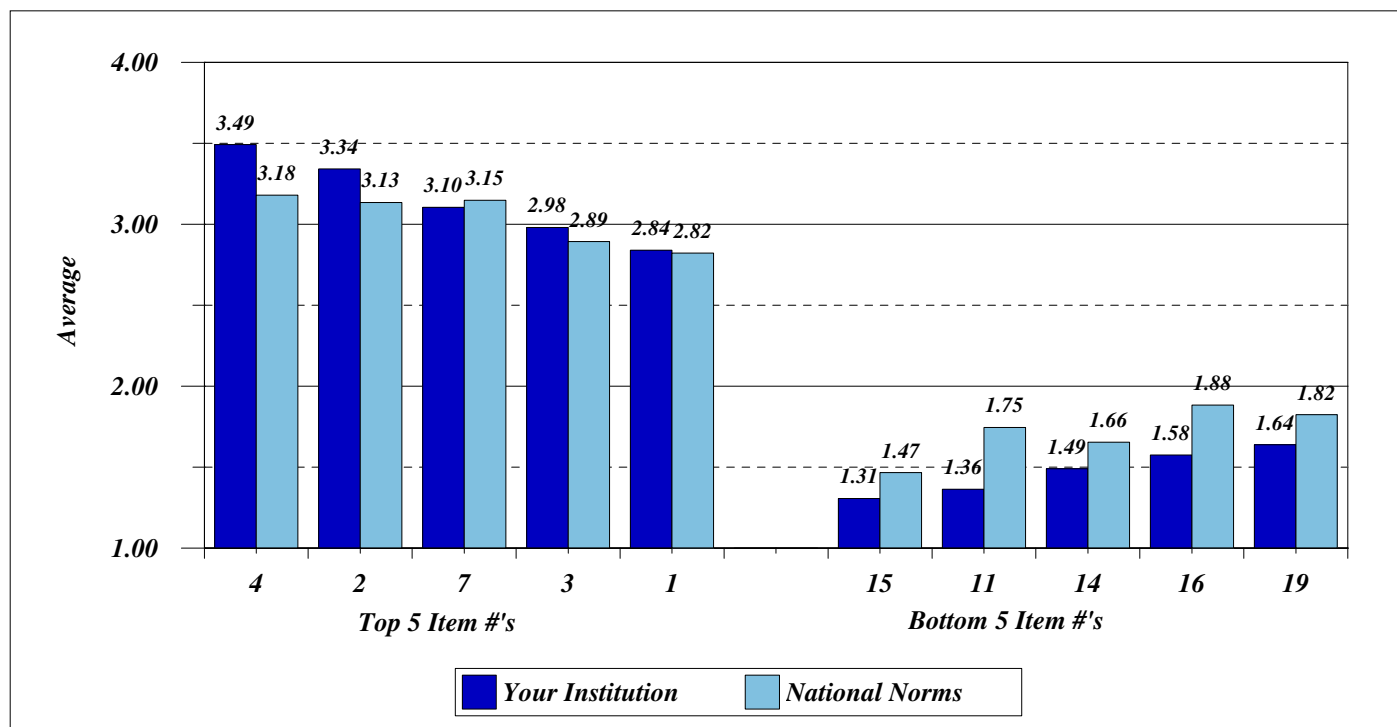


Figure 9. Section III - College Impressions: Part A - Importance of the Impressions  
The Top 5 Items and the Bottom 5 Items for Your Institution

Item #		Your Institution Avg	National Norms Avg
<b>Top 5 for Your Institution</b>			
4	Location of the college	3.49	3.18
2	Availability of a particular program of study	3.34	3.13
7	Cost of attending the college	3.10	3.15
3	Variety of courses offered	2.98	2.89
1	Academic reputation of the college	2.84	2.82
<b>Bottom 5 for Your Institution</b>			
15	Religious affiliation of the college	1.31	1.47
11	Sports opportunities (varsity athletics)	1.36	1.75
14	Male/female ratio of the student body	1.49	1.66
16	Type of housing available	1.58	1.88
19	Friends attend (or plan to attend) the college	1.64	1.82

(Satisfaction Scale: 4=very important, 3=moderately important, 2=slightly important, 1=not important)

NOTE: Items with fewer than 10 respondents were not included in the analyses.

CALIFORNIA STATE UNIVERSITY

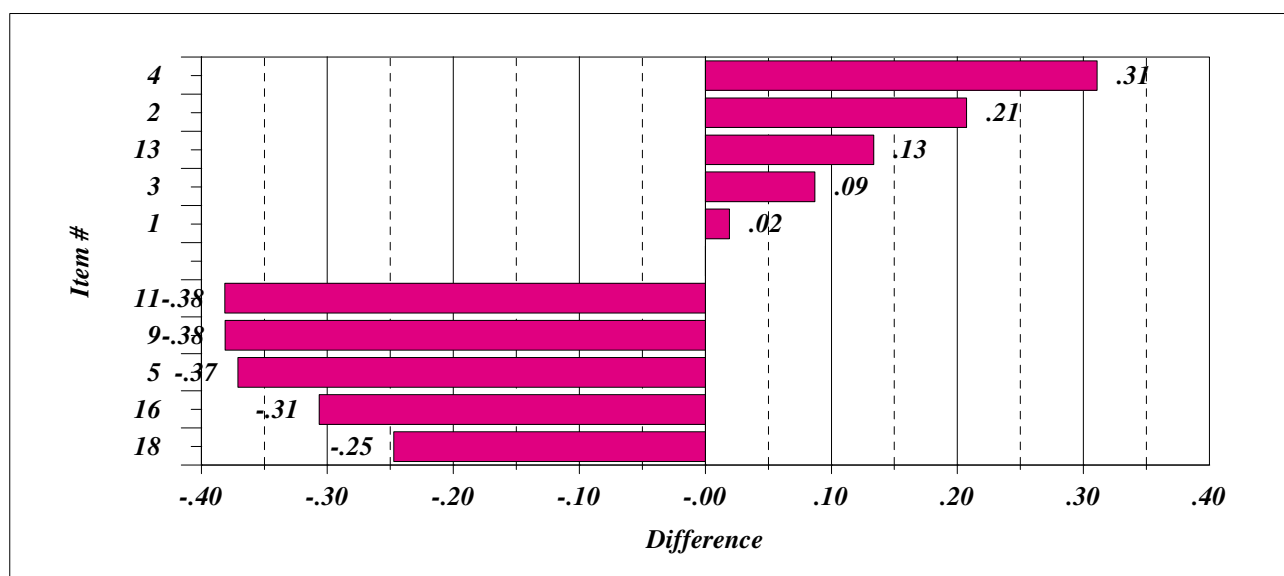


Figure 10. Section III - College Impressions: Part A - Importance of the Impressions  
Largest Positive & Largest Negative Differences between Your Institution's Averages and the National Averages

Item #	Your Institution Avg	National Norms Avg	Difference
<b>Largest Positive (or Smallest Negative) Differences</b>			
4 Location of the college	3.49	3.18	.31
2 Availability of a particular program of study	3.34	3.13	.21
13 Racial/ethnic makeup of the college	1.75	1.61	.13
3 Variety of courses offered	2.98	2.89	.09
1 Academic reputation of the college	2.84	2.82	.02
<b>Largest Negative (or Smallest Positive) Differences</b>			
11 Sports opportunities (varsity athletics)	1.36	1.75	-.38
9 Availability of financial aid or scholarship	2.62	3.00	-.38
5 Size of the college	2.18	2.55	-.37
16 Type of housing available	1.58	1.88	-.31
18 Extracurricular activities available (drama, intramural athletics, etc.)	1.84	2.09	-.25

(Satisfaction Scale: 4=very important, 3=moderately important, 2=slightly important, 1=not important)

NOTE: Items with fewer than 10 respondents were not included in the analyses.

CALIFORNIA STATE UNIVERSITY

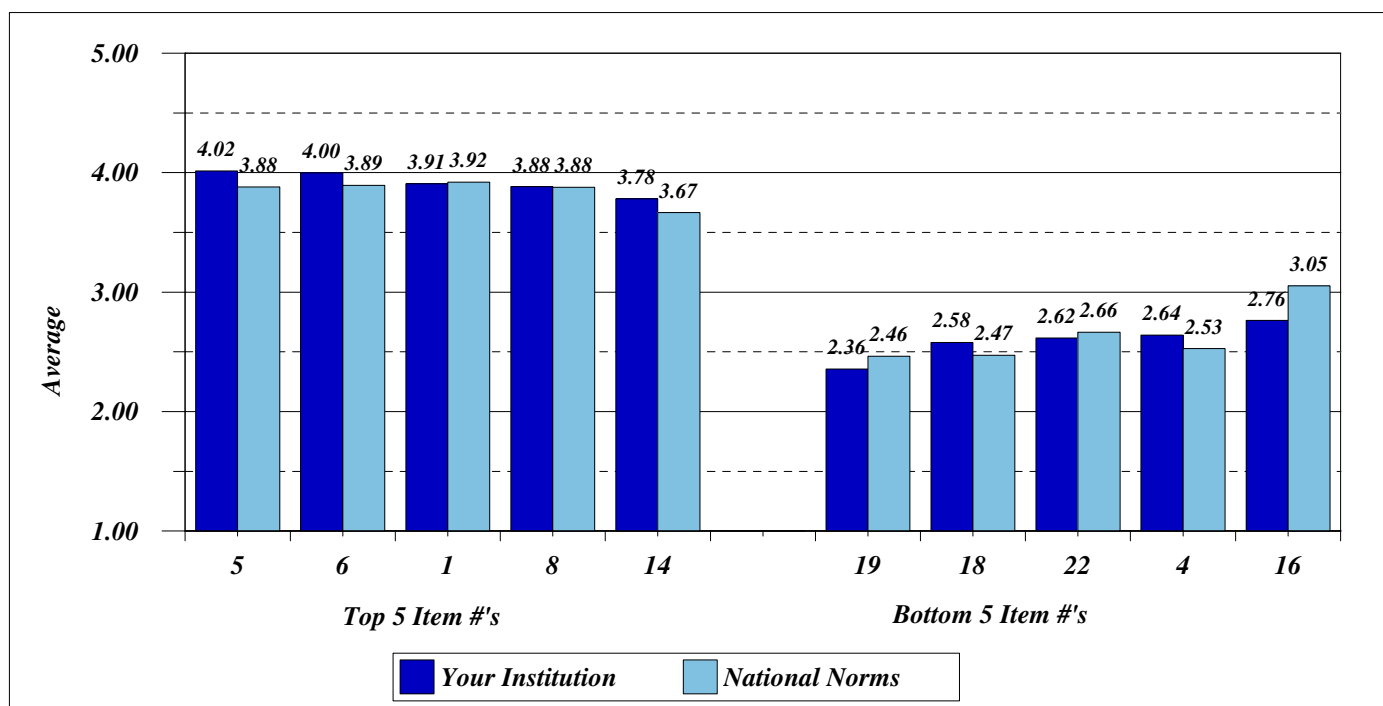


Figure 11. Section III - College Impressions: Part B - Agreement/Disagreement with Statements about this College  
The Top 5 Items and the Bottom 5 Items for Your Institution

Item #		Your Institution Avg	National Norms Avg
<b>Top 5 for Your Institution</b>			
5	<i>This college has a high-quality program in the subject area I plan to pursue</i>	4.02	3.88
6	<i>This college has many activities and organizations for students</i>	4.00	3.89
1	<i>This college has high-quality academic programs</i>	3.91	3.92
8	<i>There are a large number/variety of courses/programs offered at this college</i>	3.88	3.88
14	<i>Students from various racial and ethnic backgrounds get along well</i>	3.78	3.67
<b>Bottom 5 for Your Institution</b>			
19	<i>There are too many rules and regulations at this college</i>	2.36	2.46
18	<i>Students must be above average to be admitted to this college</i>	2.58	2.47
22	<i>The foreign language requirement at this college is too strict</i>	2.62	2.66
4	<i>It is difficult to earn good grades at this college</i>	2.64	2.53
16	<i>Many students at this college are more interested in having fun than in studying</i>	2.76	3.05

(Satisfaction Scale: 5=strongly agree, 4=agree, 3=neutral, 2=disagree, 1=strongly disagree)

NOTE: Items with fewer than 10 respondents were not included in the analyses.

CALIFORNIA STATE UNIVERSITY

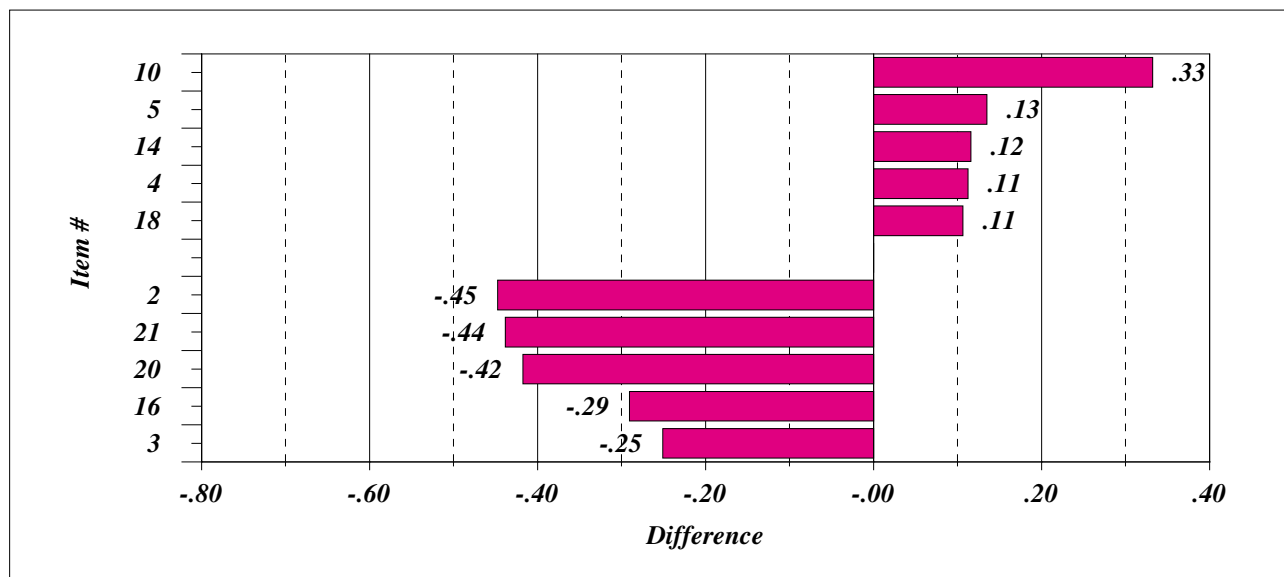


Figure 12. Section III - College Impressions: Part B - Agreement/Disagreement with Statements about this College  
Largest Positive & Largest Negative Differences between Your Institution's Averages and the National Averages

Item #		Your Institution Avg	National Norms Avg	Difference
<i>Largest Positive (or Smallest Negative) Differences</i>				
10	<i>This college has too many required courses</i>	2.98	2.65	.33
5	<i>This college has a high-quality program in the subject area I plan to pursue</i>	4.02	3.88	.13
14	<i>Students from various racial and ethnic backgrounds get along well</i>	3.78	3.67	.12
4	<i>It is difficult to earn good grades at this college</i>	2.64	2.53	.11
18	<i>Students must be above average to be admitted to this college</i>	2.58	2.47	.11
<i>Largest Negative (or Smallest Positive) Differences</i>				
2	<i>The cost of attending this college is reasonable</i>	3.55	3.99	-.45
21	<i>This college provides sufficient financial aid for students who need assistance</i>	3.24	3.67	-.44
20	<i>This college has high-quality classroom and laboratory facilities</i>	3.08	3.50	-.42
16	<i>Many students at this college are more interested in having fun than in studying</i>	2.76	3.05	-.29
3	<i>College personnel care about individual students</i>	3.58	3.83	-.25

(Satisfaction Scale: 5=strongly agree, 4=agree, 3=neutral, 2=disagree, 1=strongly disagree)

NOTE: Items with fewer than 10 respondents were not included in the analyses.

CALIFORNIA STATE UNIVERSITY

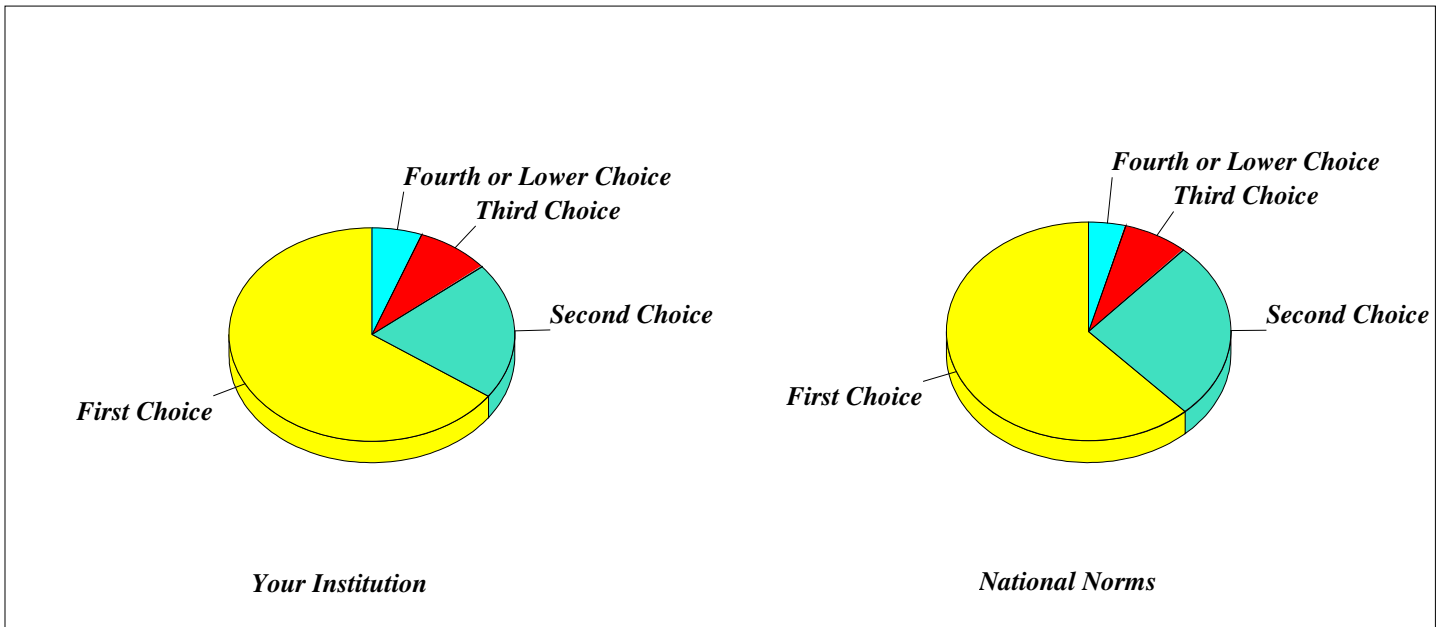


Figure 13. Section III - College Impressions: Part C - Rating of College at Time of Admission

<i>Rating of College at Time of Admission</i>	<i>Your Institution %</i>	<i>National Norms %</i>
<i>First Choice</i>	<i>65.2</i>	<i>61.9</i>
<i>Second Choice</i>	<i>20.8</i>	<i>26.5</i>
<i>Third Choice</i>	<i>8.3</i>	<i>7.4</i>
<i>Fourth or Lower Choice</i>	<i>5.7</i>	<i>4.2</i>

CALIFORNIA STATE UNIVERSITY

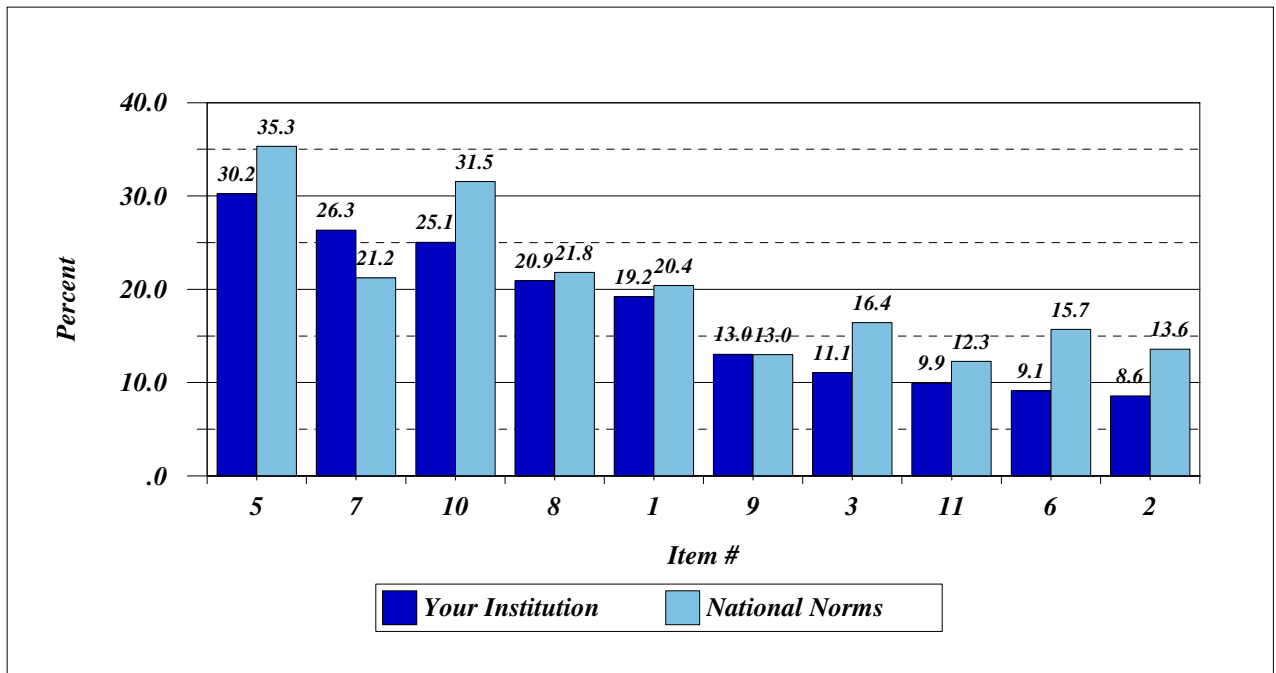


Figure 14. Section III - Item E: Major Source of Information About this College

Top 10 Item #'s	Your Institution %	National Norms %
5 Parents or relatives	30.2	35.3
7 College catalog	26.3	21.2
10 Visit(s) to the campus	25.1	31.5
8 College brochure or pamphlet	20.9	21.8
1 Friends at the college	19.2	20.4
9 College alumni	13.0	13.0
3 High school counselors	11.1	16.4
11 College representative's visits to high school (college night, etc.)	9.9	12.3
6 High school classmates	9.1	15.7
2 High school teachers	8.6	13.6