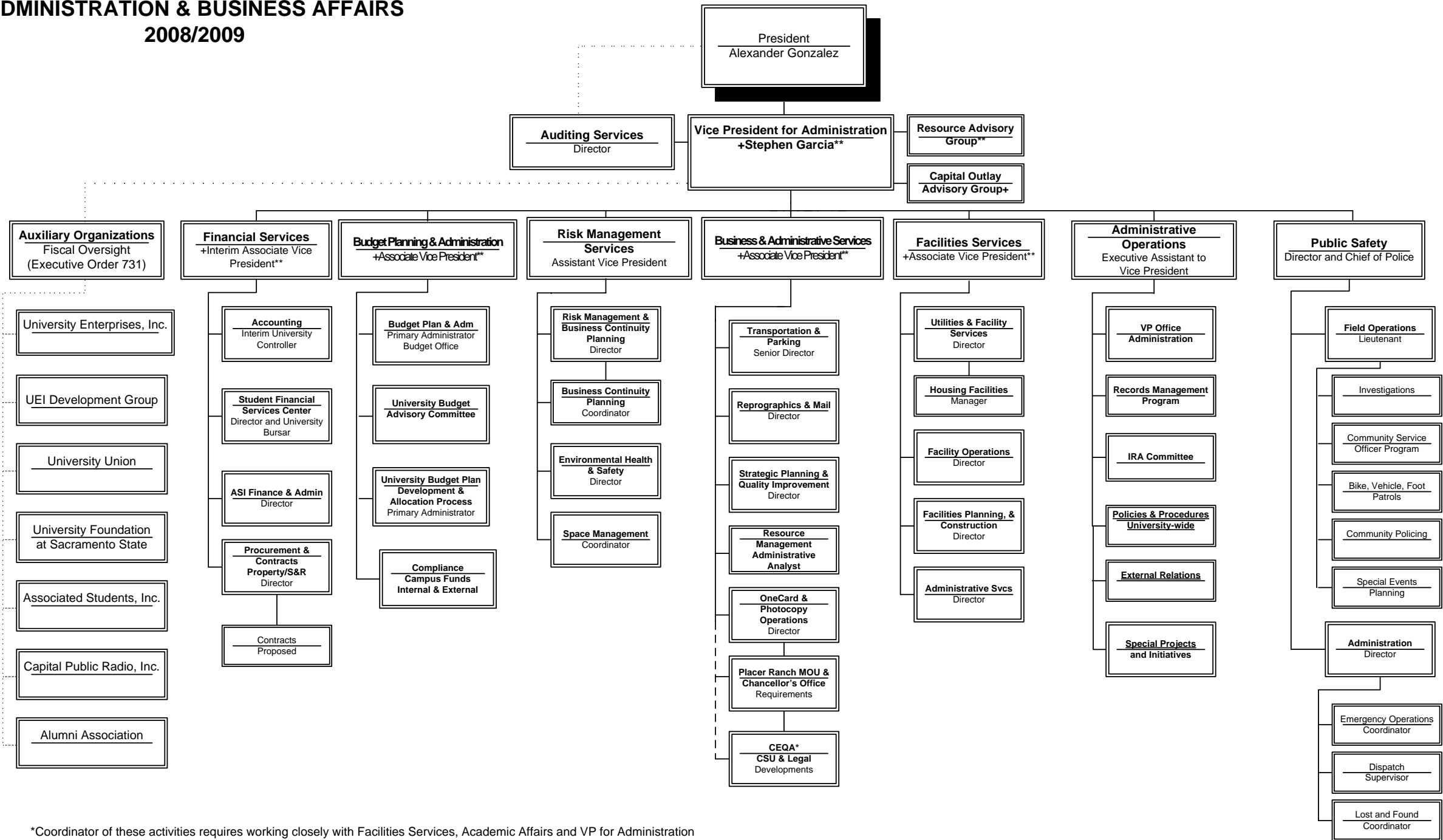


ADMINISTRATION & BUSINESS AFFAIRS

2008/2009



*Coordinator of these activities requires working closely with Facilities Services, Academic Affairs and VP for Administration

**Resource Advisory Group: Stephen Garcia, Justine Heartt, Stacy Hayano, Ron Richardson, Abbi Stone

+Capital Outlay Advisory Group: Stephen Garcia, Stacy Hayano, Justine Heartt, Ron Richardson, Abbi Stone