

Dreamweaver

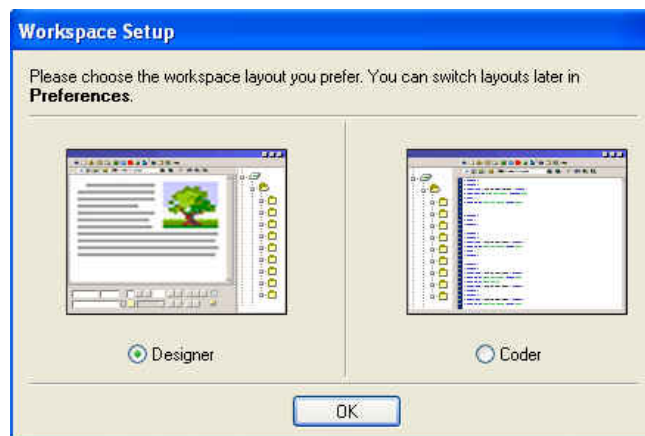
Version 8 Recommended Settings

HOW TO GUIDE

CALIFORNIA STATE UNIVERSITY, SACRAMENTO

WORKSPACE SETUP (WINDOWS OS ONLY)

The first time you run Dreamweaver after you install it you need to select the *Designer* interface.

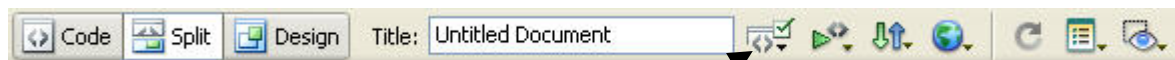


TARGET BROWSER CHECK

You can automatically validate your HTML documents against various browsers as you make changes to your documents. These steps help you to set up this feature for all of your documents.

step 1. Create an empty new HTML document.

step 2. From the **Document** window click the **Browser Check** icon on the **Toolbar**.



Browser
Check

- step 3.* When the menu appears, be sure there is a check next to **Auto-check on Open**. If there is no check, click this option to activate it; then click the **Browser Check** icon again to display the menu.
- step 4.* Click **Settings** from the **Browser Check** menu.
- step 5.* Check the boxes for the browsers to set your target browsers.
- step 6.* Click **OK** to save your changes.

OBJECTS (INSERT) PANEL

The Objects (Insert) panel contains various icons that allow you to easily insert different types of elements into your Web documents. For example, you can insert an anchor, table, picture or horizontal rule using the icons on this panel.



or



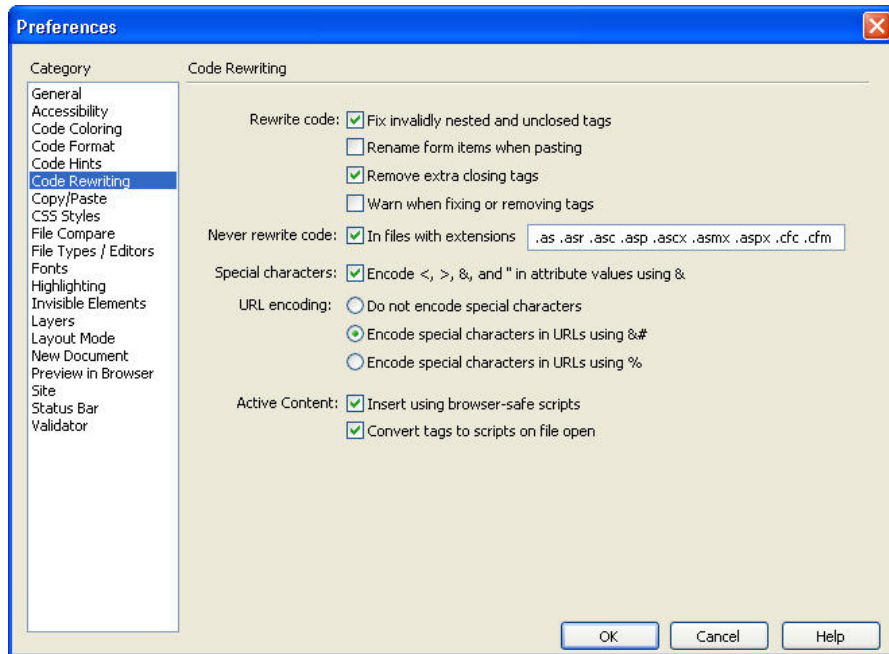
To change the default display of the Objects panel from drop-down menu to tabs:

- step 1.* On the **Objects** panel click **Common** to expand the drop-down menu.
- step 2.* Select **Show as Tabs**. The view changes to the **View as Tabs** figure shown above. To change it back to a drop-down menu, simply right-click on the blue bar next to the last tab name and select **Show as Menu**.

PREFERENCES

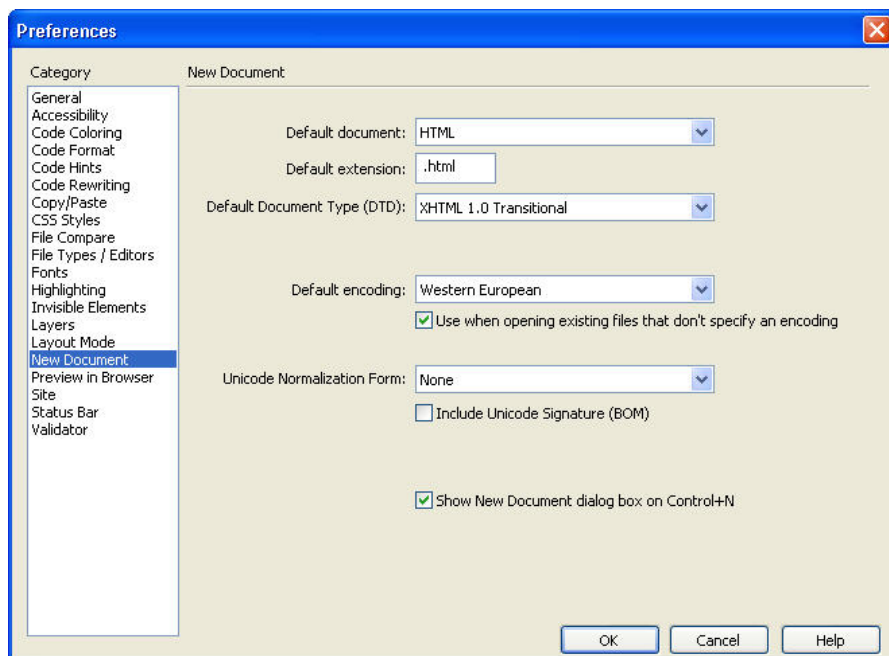
There are several global preferences in Dreamweaver that, when set, can save you time when designing Web pages. Follow these steps to set the recommended preferences.

- step 1.* On the PC, select **Edit > Preferences**. On the Macintosh select **Dreamweaver > Preferences**.
- step 2.* Click the **Accessibility** category.
- step 3.* Click each box under **Show attributes when inserting** to place a check in each box.
- step 4.* Click the **Code Rewriting** category.
- step 5.* Click the box next to **Fix invalidly nested and unclosed tags** to place a check in the box.
- step 6.* Click the box next to **Remove extra closing tags** to place a check in the box.
- step 7.* Click the box next to **Encode <, > &, and “ in attribute values using &”** to place a check in the box.



step 8. Click the **New Document** category.

step 9. Select the **Default Document Type** as **XHTML 1.0 Transitional**.



step 10. Click the **Validator** category.

step 11. Click the box next to **XHTML 1.0 transitional** to place a check in the box.

step 12. Click **OK** to save your changes.