

Photoshop Elements 3.0 – Web Photo Gallery (PC version)

Photoshop Elements is a user-friendly version of the high-end Photoshop software program for creating and editing images and photographs for print, e-mail, and the Web.

Resizing a group of images and inserting them into a set of Web pages can be very time consuming. Fortunately, Adobe® Photoshop® Elements can save you hours of work by quickly and easily resizing your images and creating Web pages to display your images – called a Web photo gallery.

Here are some sample uses for a Web photo gallery:

- List of student photos for use in WebCT.
- Display of museum artifacts.
- Presentation of photos from a group field trip, special event or sample projects.

You can create a Web photo gallery by following this process:

Step 1: If needed, create a single folder that contains all of the photographs or images you want to use as part of your new photo gallery. All of the images should be approximately the same size.

Step 2: Open the Adobe Photoshop Elements version 3.0 application.

Step 3: Click **View and Organize Photos** from the Welcome screen or if Photoshop Elements is currently running, click the **Photo Browser** button from the Editor.

Step 4: In the Organizer, click the down arrow next to the camera button and select **From Files and Folders...**, as shown below. This allows you to first add your images to Photoshop Elements' Organizer.

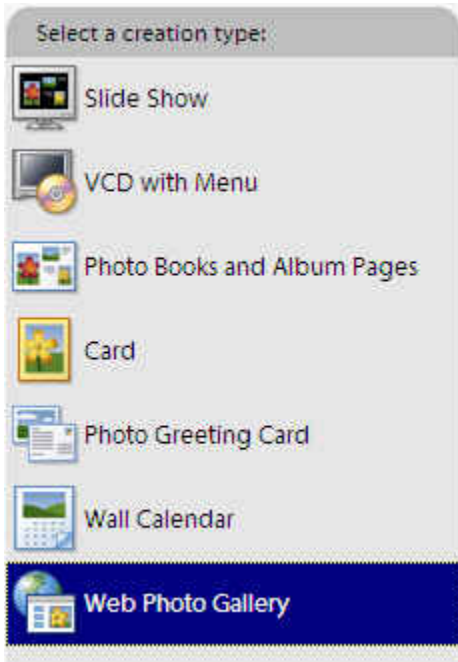


Step 5: From the **Get Photos** window locate the folder that contains your photos or images and click **Get Photos**.

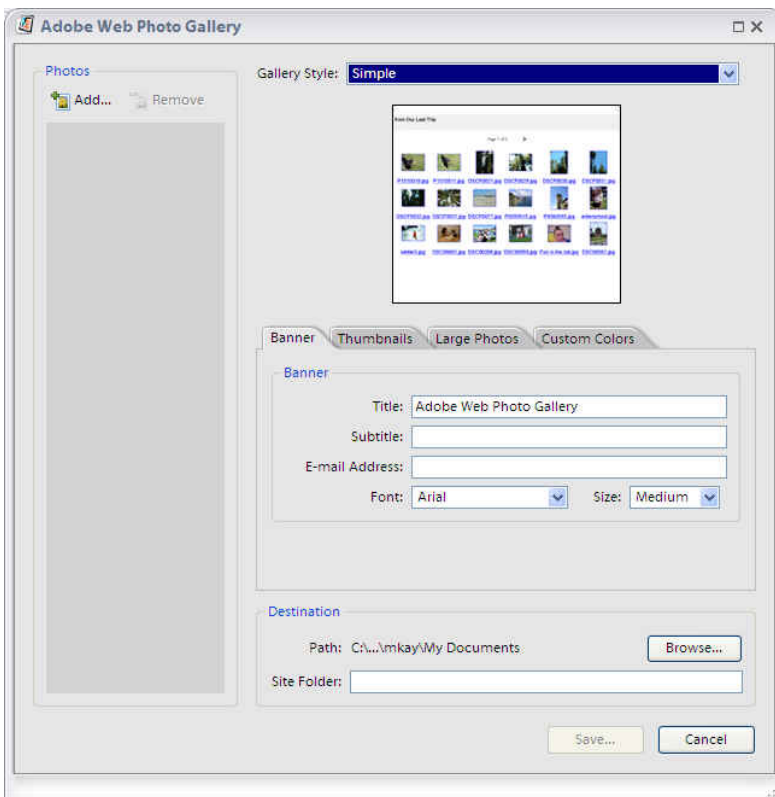
Step 6: If you wish to add the tags, click the **Select All** button on the **Import Attached Tags** window and then click **OK** and then **OK** again. Your images are now added to the Organizer.

Step 7: From the Organizer screen click the **Create** button ( Create). The Creation Setup window appears after the Organizer loads.

Step 8: From the **Create Setup** menu click **Web Photo Gallery**, and then click **OK**.



Step 9: The Adobe Web Photo Gallery window appears, as illustrated below. Select a style for your Web gallery from the **Gallery Style** drop-down menu. Each time you select a style, a thumbnail of the resulting Web gallery is displayed below your selection.



Step 10: In the middle section select one of the tabs for **Banner**, **Thumbnails**, **Large Photos** or **Custom Colors** and complete the fields as necessary. Generally, the default values that appear for each area work well. Remember, after the new Web gallery is created, you can edit the Web pages using a Web editor, such as Macromedia Dreamweaver.

Step 11: In the **Destination** section click the **Browse** button to locate and select the folder where you want to place your new Web gallery. You may create a new folder at this time. Also enter a name for your **Site Folder**, which will be created by Photoshop Elements within your destination folder.

Step 12: Click **Save** to accept your selections and create your new Web photo gallery. Photoshop Elements will resize your images and create Web pages for your Web gallery. In addition, when it is finished, it will open a new window and display the first Web page of your Web gallery.

*Note: If you do not like the results of the Web gallery, you can return to **Step 7** above and recreate your Web photo gallery.*

Step 13: Upload (copy) the destination folder – the folder you chose in Step 11 to place the Web photo gallery inside – to your Web site on a Web server, such as the main Sacramento State Web server (www.csus.edu) or WebCT, where you can share your Web photo gallery.