

Appendix B

Biological Resources

CNDDB Special-Status Species List

CNDDDB 9-Quad Species List 314 records.

Element Type	Scientific Name	Common Name	Element Code	Federal Status	State Status	CDFW Status	CA Rare Plant Rank	Quad Code	Quad Name	Data Status	Taxonomic Sort
Animals - Amphibians	Batrachoseps diabolicus	Hell Hollow slender salamander	AAAAD02130	None	None	-	-	3812153	CARMICHAEL	Unprocessed	Animals - Amphibians - Plethodontidae - Batrachoseps diabolicus
Animals - Amphibians	Spea hammondi	western spadefoot	AAABF02020	None	None	SSC	-	3812153	CARMICHAEL	Mapped and Unprocessed	Animals - Amphibians - Scaphiopodidae - Spea hammondi
Animals - Birds	Accipiter cooperii	Cooper's hawk	ABNKC12040	None	None	WL	-	3812153	CARMICHAEL	Mapped and Unprocessed	Animals - Birds - Accipitridae - Accipiter cooperii
Animals - Birds	Accipiter cooperii	Cooper's hawk	ABNKC12040	None	None	WL	-	3812144	FLORIN	Mapped and Unprocessed	Animals - Birds - Accipitridae - Accipiter cooperii
Animals - Birds	Accipiter cooperii	Cooper's hawk	ABNKC12040	None	None	WL	-	3812163	CITRUS HEIGHTS	Unprocessed	Animals - Birds - Accipitridae - Accipiter cooperii
Animals - Birds	Accipiter cooperii	Cooper's hawk	ABNKC12040	None	None	WL	-	3812154	SACRAMENTO EAST	Mapped and Unprocessed	Animals - Birds - Accipitridae - Accipiter cooperii
Animals - Birds	Accipiter cooperii	Cooper's hawk	ABNKC12040	None	None	WL	-	3812143	ELK GROVE	Mapped	Animals - Birds - Accipitridae - Accipiter cooperii
Animals - Birds	Aquila chrysaetos	golden eagle	ABNKC22010	None	None	FP , WL	-	3812153	CARMICHAEL	Mapped	Animals - Birds - Accipitridae - Aquila chrysaetos
Animals - Birds	Buteo regalis	ferruginous hawk	ABNKC19120	None	None	WL	-	3812153	CARMICHAEL	Mapped and Unprocessed	Animals - Birds - Accipitridae - Buteo regalis
Animals - Birds	Buteo regalis	ferruginous hawk	ABNKC19120	None	None	WL	-	3812144	FLORIN	Mapped	Animals - Birds - Accipitridae - Buteo regalis
Animals - Birds	Buteo swainsoni	Swainson's hawk	ABNKC19070	None	Threatened	-	-	3812144	FLORIN	Mapped and Unprocessed	Animals - Birds - Accipitridae - Buteo swainsoni
Animals - Birds	Buteo swainsoni	Swainson's hawk	ABNKC19070	None	Threatened	-	-	3812153	CARMICHAEL	Mapped and Unprocessed	Animals - Birds - Accipitridae - Buteo swainsoni
Animals - Birds	Buteo swainsoni	Swainson's hawk	ABNKC19070	None	Threatened	-	-	3812145	CLARKSBURG	Mapped	Animals - Birds - Accipitridae - Buteo swainsoni
Animals - Birds	Buteo swainsoni	Swainson's hawk	ABNKC19070	None	Threatened	-	-	3812154	SACRAMENTO EAST	Mapped and Unprocessed	Animals - Birds - Accipitridae - Buteo swainsoni
Animals - Birds	Buteo swainsoni	Swainson's hawk	ABNKC19070	None	Threatened	-	-	3812155	SACRAMENTO WEST	Mapped and Unprocessed	Animals - Birds - Accipitridae - Buteo swainsoni
Animals - Birds	Buteo swainsoni	Swainson's hawk	ABNKC19070	None	Threatened	-	-	3812163	CITRUS HEIGHTS	Unprocessed	Animals - Birds - Accipitridae - Buteo swainsoni
Animals - Birds	Buteo swainsoni	Swainson's hawk	ABNKC19070	None	Threatened	-	-	3812165	TAYLOR MONUMENT	Mapped and Unprocessed	Animals - Birds - Accipitridae - Buteo swainsoni
Animals - Birds	Buteo swainsoni	Swainson's hawk	ABNKC19070	None	Threatened	-	-	3812164	RIO LINDA	Mapped and Unprocessed	Animals - Birds - Accipitridae - Buteo swainsoni
Animals - Birds	Buteo swainsoni	Swainson's hawk	ABNKC19070	None	Threatened	-	-	3812143	ELK GROVE	Mapped and Unprocessed	Animals - Birds - Accipitridae - Buteo swainsoni
Animals - Birds	Circus hudsonius	northern harrier	ABNKC11011	None	None	SSC	-	3812164	RIO LINDA	Unprocessed	Animals - Birds - Accipitridae - Circus hudsonius
Animals - Birds	Circus hudsonius	northern harrier	ABNKC11011	None	None	SSC	-	3812145	CLARKSBURG	Unprocessed	Animals - Birds - Accipitridae - Circus hudsonius
Animals - Birds	Circus hudsonius	northern harrier	ABNKC11011	None	None	SSC	-	3812153	CARMICHAEL	Unprocessed	Animals - Birds - Accipitridae - Circus hudsonius

Animals - Birds	Elanus leucurus	white-tailed kite	ABNKC06010	None	None	FP	-	3812153	CARMICHAEL	Mapped and Unprocessed	Animals - Birds - Accipitridae - Elanus leucurus
Animals - Birds	Elanus leucurus	white-tailed kite	ABNKC06010	None	None	FP	-	3812144	FLORIN	Mapped and Unprocessed	Animals - Birds - Accipitridae - Elanus leucurus
Animals - Birds	Elanus leucurus	white-tailed kite	ABNKC06010	None	None	FP	-	3812143	ELK GROVE	Mapped	Animals - Birds - Accipitridae - Elanus leucurus
Animals - Birds	Elanus leucurus	white-tailed kite	ABNKC06010	None	None	FP	-	3812163	CITRUS HEIGHTS	Mapped	Animals - Birds - Accipitridae - Elanus leucurus
Animals - Birds	Elanus leucurus	white-tailed kite	ABNKC06010	None	None	FP	-	3812164	RIO LINDA	Mapped and Unprocessed	Animals - Birds - Accipitridae - Elanus leucurus
Animals - Birds	Elanus leucurus	white-tailed kite	ABNKC06010	None	None	FP	-	3812155	SACRAMENTO WEST	Mapped and Unprocessed	Animals - Birds - Accipitridae - Elanus leucurus
Animals - Birds	Elanus leucurus	white-tailed kite	ABNKC06010	None	None	FP	-	3812154	SACRAMENTO EAST	Mapped and Unprocessed	Animals - Birds - Accipitridae - Elanus leucurus
Animals - Birds	Haliaeetus leucocephalus	bald eagle	ABNKC10010	Delisted	Endangered	FP	-	3812155	SACRAMENTO WEST	Unprocessed	Animals - Birds - Accipitridae - Haliaeetus leucocephalus
Animals - Birds	Haliaeetus leucocephalus	bald eagle	ABNKC10010	Delisted	Endangered	FP	-	3812153	CARMICHAEL	Unprocessed	Animals - Birds - Accipitridae - Haliaeetus leucocephalus
Animals - Birds	Chaetura vauxi	Vaux's swift	ABNUA03020	None	None	SSC	-	3812153	CARMICHAEL	Unprocessed	Animals - Birds - Apodidae - Chaetura vauxi
Animals - Birds	Chaetura vauxi	Vaux's swift	ABNUA03020	None	None	SSC	-	3812163	CITRUS HEIGHTS	Unprocessed	Animals - Birds - Apodidae - Chaetura vauxi
Animals - Birds	Ardea alba	great egret	ABNGA04040	None	None	-	-	3812164	RIO LINDA	Mapped and Unprocessed	Animals - Birds - Ardeidae - Ardea alba
Animals - Birds	Ardea alba	great egret	ABNGA04040	None	None	-	-	3812165	TAYLOR MONUMENT	Mapped and Unprocessed	Animals - Birds - Ardeidae - Ardea alba
Animals - Birds	Ardea alba	great egret	ABNGA04040	None	None	-	-	3812155	SACRAMENTO WEST	Unprocessed	Animals - Birds - Ardeidae - Ardea alba
Animals - Birds	Ardea alba	great egret	ABNGA04040	None	None	-	-	3812153	CARMICHAEL	Mapped and Unprocessed	Animals - Birds - Ardeidae - Ardea alba
Animals - Birds	Ardea alba	great egret	ABNGA04040	None	None	-	-	3812145	CLARKSBURG	Unprocessed	Animals - Birds - Ardeidae - Ardea alba
Animals - Birds	Ardea alba	great egret	ABNGA04040	None	None	-	-	3812144	FLORIN	Mapped and Unprocessed	Animals - Birds - Ardeidae - Ardea alba
Animals - Birds	Ardea herodias	great blue heron	ABNGA04010	None	None	-	-	3812144	FLORIN	Mapped and Unprocessed	Animals - Birds - Ardeidae - Ardea herodias
Animals - Birds	Ardea herodias	great blue heron	ABNGA04010	None	None	-	-	3812145	CLARKSBURG	Unprocessed	Animals - Birds - Ardeidae - Ardea herodias
Animals - Birds	Ardea herodias	great blue heron	ABNGA04010	None	None	-	-	3812153	CARMICHAEL	Mapped and Unprocessed	Animals - Birds - Ardeidae - Ardea herodias
Animals - Birds	Ardea herodias	great blue heron	ABNGA04010	None	None	-	-	3812155	SACRAMENTO WEST	Unprocessed	Animals - Birds - Ardeidae - Ardea herodias
Animals - Birds	Ardea herodias	great blue heron	ABNGA04010	None	None	-	-	3812154	SACRAMENTO EAST	Mapped	Animals - Birds - Ardeidae - Ardea herodias
Animals - Birds	Ardea herodias	great blue heron	ABNGA04010	None	None	-	-	3812165	TAYLOR MONUMENT	Mapped and Unprocessed	Animals - Birds - Ardeidae - Ardea herodias
Animals - Birds	Ardea herodias	great blue heron	ABNGA04010	None	None	-	-	3812164	RIO LINDA	Mapped and Unprocessed	Animals - Birds - Ardeidae - Ardea herodias

Animals - Birds	Ardea herodias	great blue heron	ABNGA04010	None	None	-	-	3812163	CITRUS HEIGHTS	Mapped	Animals - Birds - Ardeidae - Ardea herodias
Animals - Birds	Botaurus lentiginosus	American bittern	ABNGA01020	None	None	-	-	3812165	TAYLOR MONUMENT	Unprocessed	Animals - Birds - Ardeidae - Botaurus lentiginosus
Animals - Birds	Botaurus lentiginosus	American bittern	ABNGA01020	None	None	-	-	3812144	FLORIN	Unprocessed	Animals - Birds - Ardeidae - Botaurus lentiginosus
Animals - Birds	Egretta thula	snowy egret	ABNGA06030	None	None	-	-	3812144	FLORIN	Unprocessed	Animals - Birds - Ardeidae - Egretta thula
Animals - Birds	Egretta thula	snowy egret	ABNGA06030	None	None	-	-	3812153	CARMICHAEL	Unprocessed	Animals - Birds - Ardeidae - Egretta thula
Animals - Birds	Egretta thula	snowy egret	ABNGA06030	None	None	-	-	3812165	TAYLOR MONUMENT	Mapped and Unprocessed	Animals - Birds - Ardeidae - Egretta thula
Animals - Birds	Egretta thula	snowy egret	ABNGA06030	None	None	-	-	3812164	RIO LINDA	Unprocessed	Animals - Birds - Ardeidae - Egretta thula
Animals - Birds	Egretta thula	snowy egret	ABNGA06030	None	None	-	-	3812155	SACRAMENTO WEST	Unprocessed	Animals - Birds - Ardeidae - Egretta thula
Animals - Birds	Ixobrychus exilis	least bittern	ABNGA02010	None	None	SSC	-	3812155	SACRAMENTO WEST	Unprocessed	Animals - Birds - Ardeidae - Ixobrychus exilis
Animals - Birds	Ixobrychus exilis	least bittern	ABNGA02010	None	None	SSC	-	3812144	FLORIN	Unprocessed	Animals - Birds - Ardeidae - Ixobrychus exilis
Animals - Birds	Nycticorax nycticorax	black-crowned night heron	ABNGA11010	None	None	-	-	3812144	FLORIN	Mapped and Unprocessed	Animals - Birds - Ardeidae - Nycticorax nycticorax
Animals - Birds	Nycticorax nycticorax	black-crowned night heron	ABNGA11010	None	None	-	-	3812153	CARMICHAEL	Unprocessed	Animals - Birds - Ardeidae - Nycticorax nycticorax
Animals - Birds	Nycticorax nycticorax	black-crowned night heron	ABNGA11010	None	None	-	-	3812145	CLARKSBURG	Unprocessed	Animals - Birds - Ardeidae - Nycticorax nycticorax
Animals - Birds	Nycticorax nycticorax	black-crowned night heron	ABNGA11010	None	None	-	-	3812155	SACRAMENTO WEST	Unprocessed	Animals - Birds - Ardeidae - Nycticorax nycticorax
Animals - Birds	Nycticorax nycticorax	black-crowned night heron	ABNGA11010	None	None	-	-	3812164	RIO LINDA	Unprocessed	Animals - Birds - Ardeidae - Nycticorax nycticorax
Animals - Birds	Nycticorax nycticorax	black-crowned night heron	ABNGA11010	None	None	-	-	3812165	TAYLOR MONUMENT	Mapped and Unprocessed	Animals - Birds - Ardeidae - Nycticorax nycticorax
Animals - Birds	Charadrius montanus	mountain plover	ABNNB03100	None	None	SSC	-	3812155	SACRAMENTO WEST	Unprocessed	Animals - Birds - Charadriidae - Charadrius montanus
Animals - Birds	Pica nuttalli	yellow-billed magpie	ABPAV09020	None	None	-	-	3812154	SACRAMENTO EAST	Unprocessed	Animals - Birds - Corvidae - Pica nuttalli
Animals - Birds	Pica nuttalli	yellow-billed magpie	ABPAV09020	None	None	-	-	3812153	CARMICHAEL	Unprocessed	Animals - Birds - Corvidae - Pica nuttalli
Animals - Birds	Pica nuttalli	yellow-billed magpie	ABPAV09020	None	None	-	-	3812143	ELK GROVE	Unprocessed	Animals - Birds - Corvidae - Pica nuttalli
Animals - Birds	Coccyzus americanus occidentalis	western yellow-billed cuckoo	ABNRB02022	Threatened	Endangered	-	-	3812145	CLARKSBURG	Mapped	Animals - Birds - Cuculidae - Coccyzus americanus occidentalis

Animals - Birds	Coccyzus americanus occidentalis	western yellow-billed cuckoo	ABNRB02022	Threatened	Endangered	-	-	3812154	SACRAMENTO EAST	Mapped	Animals - Birds - Cuculidae - Coccyzus americanus occidentalis
Animals - Birds	Coccyzus americanus occidentalis	western yellow-billed cuckoo	ABNRB02022	Threatened	Endangered	-	-	3812155	SACRAMENTO WEST	Mapped	Animals - Birds - Cuculidae - Coccyzus americanus occidentalis
Animals - Birds	Coccyzus americanus occidentalis	western yellow-billed cuckoo	ABNRB02022	Threatened	Endangered	-	-	3812165	TAYLOR MONUMENT	Mapped	Animals - Birds - Cuculidae - Coccyzus americanus occidentalis
Animals - Birds	Coccyzus americanus occidentalis	western yellow-billed cuckoo	ABNRB02022	Threatened	Endangered	-	-	3812164	RIO LINDA	Mapped	Animals - Birds - Cuculidae - Coccyzus americanus occidentalis
Animals - Birds	Falco columbarius	merlin	ABNKD06030	None	None	WL	-	3812144	FLORIN	Mapped	Animals - Birds - Falconidae - Falco columbarius
Animals - Birds	Falco mexicanus	prairie falcon	ABNKD06090	None	None	WL	-	3812155	SACRAMENTO WEST	Unprocessed	Animals - Birds - Falconidae - Falco mexicanus
Animals - Birds	Falco mexicanus	prairie falcon	ABNKD06090	None	None	WL	-	3812154	SACRAMENTO EAST	Unprocessed	Animals - Birds - Falconidae - Falco mexicanus
Animals - Birds	Falco peregrinus anatum	American peregrine falcon	ABNKD06071	Delisted	Delisted	FP	-	3812155	SACRAMENTO WEST	Unprocessed	Animals - Birds - Falconidae - Falco peregrinus anatum
Animals - Birds	Falco peregrinus anatum	American peregrine falcon	ABNKD06071	Delisted	Delisted	FP	-	3812163	CITRUS HEIGHTS	Unprocessed	Animals - Birds - Falconidae - Falco peregrinus anatum
Animals - Birds	Antigone canadensis tabida	greater sandhill crane	ABNMK01014	None	Threatened	FP	-	3812144	FLORIN	Unprocessed	Animals - Birds - Gruidae - Antigone canadensis tabida
Animals - Birds	Progne subis	purple martin	ABPAU01010	None	None	SSC	-	3812164	RIO LINDA	Mapped and Unprocessed	Animals - Birds - Hirundinidae - Progne subis
Animals - Birds	Progne subis	purple martin	ABPAU01010	None	None	SSC	-	3812155	SACRAMENTO WEST	Mapped and Unprocessed	Animals - Birds - Hirundinidae - Progne subis
Animals - Birds	Progne subis	purple martin	ABPAU01010	None	None	SSC	-	3812154	SACRAMENTO EAST	Mapped and Unprocessed	Animals - Birds - Hirundinidae - Progne subis
Animals - Birds	Riparia riparia	bank swallow	ABPAU08010	None	Threatened	-	-	3812154	SACRAMENTO EAST	Mapped	Animals - Birds - Hirundinidae - Riparia riparia
Animals - Birds	Riparia riparia	bank swallow	ABPAU08010	None	Threatened	-	-	3812163	CITRUS HEIGHTS	Mapped	Animals - Birds - Hirundinidae - Riparia riparia
Animals - Birds	Riparia riparia	bank swallow	ABPAU08010	None	Threatened	-	-	3812153	CARMICHAEL	Mapped	Animals - Birds - Hirundinidae - Riparia riparia
Animals - Birds	Agelaius tricolor	tricolored blackbird	ABPBXB0020	None	Threatened	SSC	-	3812153	CARMICHAEL	Mapped and Unprocessed	Animals - Birds - Icteridae - Agelaius tricolor
Animals - Birds	Agelaius tricolor	tricolored blackbird	ABPBXB0020	None	Threatened	SSC	-	3812145	CLARKSBURG	Mapped	Animals - Birds - Icteridae - Agelaius tricolor
Animals - Birds	Agelaius tricolor	tricolored blackbird	ABPBXB0020	None	Threatened	SSC	-	3812144	FLORIN	Mapped and Unprocessed	Animals - Birds - Icteridae - Agelaius tricolor
Animals - Birds	Agelaius tricolor	tricolored blackbird	ABPBXB0020	None	Threatened	SSC	-	3812143	ELK GROVE	Mapped	Animals - Birds - Icteridae - Agelaius tricolor
Animals - Birds	Agelaius tricolor	tricolored blackbird	ABPBXB0020	None	Threatened	SSC	-	3812164	RIO LINDA	Mapped	Animals - Birds - Icteridae - Agelaius tricolor
Animals - Birds	Agelaius tricolor	tricolored blackbird	ABPBXB0020	None	Threatened	SSC	-	3812165	TAYLOR MONUMENT	Mapped	Animals - Birds - Icteridae - Agelaius tricolor

Animals - Birds	Agelaius tricolor	tricolored blackbird	ABPBXB0020	None	Threatened	SSC	-	3812155	SACRAMENTO WEST	Mapped	Animals - Birds - Icteridae - Agelaius tricolor
Animals - Birds	Xanthocephalus xanthocephalus	yellow-headed blackbird	ABPBXB3010	None	None	SSC	-	3812144	FLORIN	Mapped	Animals - Birds - Icteridae - Xanthocephalus xanthocephalus
Animals - Birds	Xanthocephalus xanthocephalus	yellow-headed blackbird	ABPBXB3010	None	None	SSC	-	3812145	CLARKSBURG	Mapped	Animals - Birds - Icteridae - Xanthocephalus xanthocephalus
Animals - Birds	Icteria virens	yellow-breasted chat	ABPBX24010	None	None	SSC	-	3812145	CLARKSBURG	Unprocessed	Animals - Birds - Icteridae - Icteria virens
Animals - Birds	Lanius ludovicianus	loggerhead shrike	ABPBR01030	None	None	SSC	-	3812153	CARMICHAEL	Unprocessed	Animals - Birds - Laniidae - Lanius ludovicianus
Animals - Birds	Lanius ludovicianus	loggerhead shrike	ABPBR01030	None	None	SSC	-	3812144	FLORIN	Unprocessed	Animals - Birds - Laniidae - Lanius ludovicianus
Animals - Birds	Lanius ludovicianus	loggerhead shrike	ABPBR01030	None	None	SSC	-	3812164	RIO LINDA	Unprocessed	Animals - Birds - Laniidae - Lanius ludovicianus
Animals - Birds	Sternula antillarum browni	California least tern	ABNNM08103	Endangered	Endangered	FP	-	3812144	FLORIN	Unprocessed	Animals - Birds - Laridae - Sternula antillarum browni
Animals - Birds	Pandion haliaetus	osprey	ABNKC01010	None	None	WL	-	3812145	CLARKSBURG	Unprocessed	Animals - Birds - Pandionidae - Pandion haliaetus
Animals - Birds	Pandion haliaetus	osprey	ABNKC01010	None	None	WL	-	3812153	CARMICHAEL	Unprocessed	Animals - Birds - Pandionidae - Pandion haliaetus
Animals - Birds	Pandion haliaetus	osprey	ABNKC01010	None	None	WL	-	3812163	CITRUS HEIGHTS	Unprocessed	Animals - Birds - Pandionidae - Pandion haliaetus
Animals - Birds	Pandion haliaetus	osprey	ABNKC01010	None	None	WL	-	3812154	SACRAMENTO EAST	Unprocessed	Animals - Birds - Pandionidae - Pandion haliaetus
Animals - Birds	Setophaga petechia	yellow warbler	ABPBX03010	None	None	SSC	-	3812155	SACRAMENTO WEST	Unprocessed	Animals - Birds - Parulidae - Setophaga petechia
Animals - Birds	Setophaga petechia	yellow warbler	ABPBX03010	None	None	SSC	-	3812144	FLORIN	Unprocessed	Animals - Birds - Parulidae - Setophaga petechia
Animals - Birds	Ammodramus savannarum	grasshopper sparrow	ABPBXA0020	None	None	SSC	-	3812144	FLORIN	Unprocessed	Animals - Birds - Passerellidae - Ammodramus savannarum
Animals - Birds	Ammodramus savannarum	grasshopper sparrow	ABPBXA0020	None	None	SSC	-	3812145	CLARKSBURG	Unprocessed	Animals - Birds - Passerellidae - Ammodramus savannarum
Animals - Birds	Ammodramus savannarum	grasshopper sparrow	ABPBXA0020	None	None	SSC	-	3812155	SACRAMENTO WEST	Unprocessed	Animals - Birds - Passerellidae - Ammodramus savannarum
Animals - Birds	Ammodramus savannarum	grasshopper sparrow	ABPBXA0020	None	None	SSC	-	3812154	SACRAMENTO EAST	Unprocessed	Animals - Birds - Passerellidae - Ammodramus savannarum
Animals - Birds	Melospiza melodia	song sparrow (- in Modesto-in population)	ABPBXA3010	None	None	SSC	-	3812154	SACRAMENTO EAST	Mapped	Animals - Birds - Passerellidae - Melospiza melodia
Animals - Birds	Melospiza melodia	song sparrow (- in Modesto-in population)	ABPBXA3010	None	None	SSC	-	3812155	SACRAMENTO WEST	Mapped	Animals - Birds - Passerellidae - Melospiza melodia
Animals - Birds	Melospiza melodia	song sparrow (- in Modesto-in population)	ABPBXA3010	None	None	SSC	-	3812164	RIO LINDA	Mapped	Animals - Birds - Passerellidae - Melospiza melodia

Animals - Birds	Melospiza melodia	song sparrow (- inModesto-in population)	ABPBXA3010	None	None	SSC	-	3812165	TAYLOR MONUMENT	Mapped	Animals - Birds - Passerellidae - Melospiza melodia
Animals - Birds	Melospiza melodia	song sparrow (- inModesto-in population)	ABPBXA3010	None	None	SSC	-	3812145	CLARKSBURG	Mapped	Animals - Birds - Passerellidae - Melospiza melodia
Animals - Birds	Melospiza melodia	song sparrow (- inModesto-in population)	ABPBXA3010	None	None	SSC	-	3812144	FLORIN	Mapped	Animals - Birds - Passerellidae - Melospiza melodia
Animals - Birds	Poocetes gramineus affinis	Oregon vesper sparrow	ABPBX95011	None	None	SSC	-	3812145	CLARKSBURG	Unprocessed	Animals - Birds - Passerellidae - Poocetes gramineus affinis
Animals - Birds	Spizella breweri	Brewer's sparrow	ABPBX94040	None	None	-	-	3812155	SACRAMENTO WEST	Unprocessed	Animals - Birds - Passerellidae - Spizella breweri
Animals - Birds	Spizella breweri	Brewer's sparrow	ABPBX94040	None	None	-	-	3812154	SACRAMENTO EAST	Unprocessed	Animals - Birds - Passerellidae - Spizella breweri
Animals - Birds	Phalacrocorax auritus	double-crested cormorant	ABNFD01020	None	None	WL	-	3812155	SACRAMENTO WEST	Unprocessed	Animals - Birds - Phalacrocoracidae - Phalacrocorax auritus
Animals - Birds	Phalacrocorax auritus	double-crested cormorant	ABNFD01020	None	None	WL	-	3812144	FLORIN	Mapped and Unprocessed	Animals - Birds - Phalacrocoracidae - Phalacrocorax auritus
Animals - Birds	Laterallus jamaicensis coturniculus	California black rail	ABNME03041	None	Threatened	FP	-	3812155	SACRAMENTO WEST	Mapped	Animals - Birds - Rallidae - Laterallus jamaicensis coturniculus
Animals - Birds	Athene cunicularia	burrowing owl	ABNSB10010	None	None	SSC	-	3812155	SACRAMENTO WEST	Mapped and Unprocessed	Animals - Birds - Strigidae - Athene cunicularia
Animals - Birds	Athene cunicularia	burrowing owl	ABNSB10010	None	None	SSC	-	3812154	SACRAMENTO EAST	Mapped and Unprocessed	Animals - Birds - Strigidae - Athene cunicularia
Animals - Birds	Athene cunicularia	burrowing owl	ABNSB10010	None	None	SSC	-	3812165	TAYLOR MONUMENT	Mapped and Unprocessed	Animals - Birds - Strigidae - Athene cunicularia
Animals - Birds	Athene cunicularia	burrowing owl	ABNSB10010	None	None	SSC	-	3812164	RIO LINDA	Mapped and Unprocessed	Animals - Birds - Strigidae - Athene cunicularia
Animals - Birds	Athene cunicularia	burrowing owl	ABNSB10010	None	None	SSC	-	3812144	FLORIN	Mapped and Unprocessed	Animals - Birds - Strigidae - Athene cunicularia
Animals - Birds	Athene cunicularia	burrowing owl	ABNSB10010	None	None	SSC	-	3812145	CLARKSBURG	Unprocessed	Animals - Birds - Strigidae - Athene cunicularia
Animals - Birds	Athene cunicularia	burrowing owl	ABNSB10010	None	None	SSC	-	3812153	CARMICHAEL	Mapped and Unprocessed	Animals - Birds - Strigidae - Athene cunicularia
Animals - Birds	Athene cunicularia	burrowing owl	ABNSB10010	None	None	SSC	-	3812143	ELK GROVE	Mapped and Unprocessed	Animals - Birds - Strigidae - Athene cunicularia
Animals - Birds	Plegadis chihi	white-faced ibis	ABNGE02020	None	None	WL	-	3812165	TAYLOR MONUMENT	Unprocessed	Animals - Birds - Threskiornithidae - Plegadis chihi
Animals - Birds	Plegadis chihi	white-faced ibis	ABNGE02020	None	None	WL	-	3812155	SACRAMENTO WEST	Unprocessed	Animals - Birds - Threskiornithidae - Plegadis chihi
Animals - Birds	Vireo bellii pusillus	least Bell's vireo	ABPBW01114	Endangered	Endangered	-	-	3812155	SACRAMENTO WEST	Mapped and Unprocessed	Animals - Birds - Vireonidae - Vireo bellii pusillus
Animals - Crustaceans	Branchinecta lynchi	vernal pool fairy shrimp	ICBRA03030	Threatened	None	-	-	3812163	CITRUS HEIGHTS	Mapped	Animals - Crustaceans - Branchinectidae - Branchinecta lynchi

Animals - Crustaceans	Branchinecta lynchi	vernal pool fairy shrimp	ICBRA03030	Threatened	None	-	-	3812164	RIO LINDA	Mapped and Unprocessed	Animals - Crustaceans - Branchinectidae - Branchinecta lynchi
Animals - Crustaceans	Branchinecta lynchi	vernal pool fairy shrimp	ICBRA03030	Threatened	None	-	-	3812153	CARMICHAEL	Mapped and Unprocessed	Animals - Crustaceans - Branchinectidae - Branchinecta lynchi
Animals - Crustaceans	Branchinecta lynchi	vernal pool fairy shrimp	ICBRA03030	Threatened	None	-	-	3812154	SACRAMENTO EAST	Mapped and Unprocessed	Animals - Crustaceans - Branchinectidae - Branchinecta lynchi
Animals - Crustaceans	Branchinecta lynchi	vernal pool fairy shrimp	ICBRA03030	Threatened	None	-	-	3812145	CLARKSBURG	Mapped	Animals - Crustaceans - Branchinectidae - Branchinecta lynchi
Animals - Crustaceans	Branchinecta lynchi	vernal pool fairy shrimp	ICBRA03030	Threatened	None	-	-	3812143	ELK GROVE	Mapped and Unprocessed	Animals - Crustaceans - Branchinectidae - Branchinecta lynchi
Animals - Crustaceans	Branchinecta lynchi	vernal pool fairy shrimp	ICBRA03030	Threatened	None	-	-	3812144	FLORIN	Mapped	Animals - Crustaceans - Branchinectidae - Branchinecta lynchi
Animals - Crustaceans	Branchinecta mesovallensis	midvalley fairy shrimp	ICBRA03150	None	None	-	-	3812144	FLORIN	Mapped	Animals - Crustaceans - Branchinectidae - Branchinecta mesovallensis
Animals - Crustaceans	Branchinecta mesovallensis	midvalley fairy shrimp	ICBRA03150	None	None	-	-	3812143	ELK GROVE	Mapped and Unprocessed	Animals - Crustaceans - Branchinectidae - Branchinecta mesovallensis
Animals - Crustaceans	Branchinecta mesovallensis	midvalley fairy shrimp	ICBRA03150	None	None	-	-	3812153	CARMICHAEL	Mapped and Unprocessed	Animals - Crustaceans - Branchinectidae - Branchinecta mesovallensis
Animals - Crustaceans	Linderiella occidentalis	California linderiella	ICBRA06010	None	None	-	-	3812153	CARMICHAEL	Mapped and Unprocessed	Animals - Crustaceans - Chirocephalidae - Linderiella occidentalis
Animals - Crustaceans	Linderiella occidentalis	California linderiella	ICBRA06010	None	None	-	-	3812154	SACRAMENTO EAST	Mapped and Unprocessed	Animals - Crustaceans - Chirocephalidae - Linderiella occidentalis
Animals - Crustaceans	Linderiella occidentalis	California linderiella	ICBRA06010	None	None	-	-	3812143	ELK GROVE	Mapped and Unprocessed	Animals - Crustaceans - Chirocephalidae - Linderiella occidentalis
Animals - Crustaceans	Linderiella occidentalis	California linderiella	ICBRA06010	None	None	-	-	3812144	FLORIN	Mapped and Unprocessed	Animals - Crustaceans - Chirocephalidae - Linderiella occidentalis
Animals - Crustaceans	Linderiella occidentalis	California linderiella	ICBRA06010	None	None	-	-	3812145	CLARKSBURG	Mapped	Animals - Crustaceans - Chirocephalidae - Linderiella occidentalis
Animals - Crustaceans	Linderiella occidentalis	California linderiella	ICBRA06010	None	None	-	-	3812164	RIO LINDA	Mapped and Unprocessed	Animals - Crustaceans - Chirocephalidae - Linderiella occidentalis
Animals - Crustaceans	Linderiella occidentalis	California linderiella	ICBRA06010	None	None	-	-	3812163	CITRUS HEIGHTS	Mapped and Unprocessed	Animals - Crustaceans - Chirocephalidae - Linderiella occidentalis

Animals - Crustaceans	Linderiella occidentalis	California linderiella	ICBRA06010	None	None	-	-	3812165	TAYLOR MONUMENT	Mapped	Animals - Crustaceans - Chirocephalidae - Linderiella occidentalis
Animals - Crustaceans	Dumontia oregonensis	hairy water flea	ICBRA23010	None	None	-	-	3812153	CARMICHAEL	Mapped	Animals - Crustaceans - Dumontiidae - Dumontia oregonensis
Animals - Crustaceans	Lepidurus packardi	vernal pool tadpole shrimp	ICBRA10010	Endangered	None	-	-	3812154	SACRAMENTO EAST	Mapped	Animals - Crustaceans - Triopsidae - Lepidurus packardi
Animals - Crustaceans	Lepidurus packardi	vernal pool tadpole shrimp	ICBRA10010	Endangered	None	-	-	3812153	CARMICHAEL	Mapped and Unprocessed	Animals - Crustaceans - Triopsidae - Lepidurus packardi
Animals - Crustaceans	Lepidurus packardi	vernal pool tadpole shrimp	ICBRA10010	Endangered	None	-	-	3812145	CLARKSBURG	Mapped	Animals - Crustaceans - Triopsidae - Lepidurus packardi
Animals - Crustaceans	Lepidurus packardi	vernal pool tadpole shrimp	ICBRA10010	Endangered	None	-	-	3812144	FLORIN	Mapped	Animals - Crustaceans - Triopsidae - Lepidurus packardi
Animals - Crustaceans	Lepidurus packardi	vernal pool tadpole shrimp	ICBRA10010	Endangered	None	-	-	3812143	ELK GROVE	Mapped and Unprocessed	Animals - Crustaceans - Triopsidae - Lepidurus packardi
Animals - Crustaceans	Lepidurus packardi	vernal pool tadpole shrimp	ICBRA10010	Endangered	None	-	-	3812164	RIO LINDA	Mapped and Unprocessed	Animals - Crustaceans - Triopsidae - Lepidurus packardi
Animals - Fish	Acipenser transmontanus	white sturgeon	AFCAA01050	None	None	SSC	-	3812155	SACRAMENTO WEST	Unprocessed	Animals - Fish - Acipenseridae - Acipenser transmontanus
Animals - Fish	Acipenser transmontanus	white sturgeon	AFCAA01050	None	None	SSC	-	3812145	CLARKSBURG	Unprocessed	Animals - Fish - Acipenseridae - Acipenser transmontanus
Animals - Fish	Archoplites interruptus	Sacramento perch	AFCQB07010	None	None	SSC	-	3812155	SACRAMENTO WEST	Mapped	Animals - Fish - Centrarchidae - Archoplites interruptus
Animals - Fish	Lavinia exilicauda exilicauda	Sacramento hitch	AFCJB19012	None	None	SSC	-	3812155	SACRAMENTO WEST	Unprocessed	Animals - Fish - Cyprinidae - Lavinia exilicauda exilicauda
Animals - Fish	Lavinia exilicauda exilicauda	Sacramento hitch	AFCJB19012	None	None	SSC	-	3812165	TAYLOR MONUMENT	Unprocessed	Animals - Fish - Cyprinidae - Lavinia exilicauda exilicauda
Animals - Fish	Lavinia exilicauda exilicauda	Sacramento hitch	AFCJB19012	None	None	SSC	-	3812145	CLARKSBURG	Unprocessed	Animals - Fish - Cyprinidae - Lavinia exilicauda exilicauda
Animals - Fish	Mylopharodon conocephalus	hardhead	AFCJB25010	None	None	SSC	-	3812145	CLARKSBURG	Unprocessed	Animals - Fish - Cyprinidae - Mylopharodon conocephalus
Animals - Fish	Mylopharodon conocephalus	hardhead	AFCJB25010	None	None	SSC	-	3812165	TAYLOR MONUMENT	Unprocessed	Animals - Fish - Cyprinidae - Mylopharodon conocephalus
Animals - Fish	Mylopharodon conocephalus	hardhead	AFCJB25010	None	None	SSC	-	3812155	SACRAMENTO WEST	Unprocessed	Animals - Fish - Cyprinidae - Mylopharodon conocephalus

Animals - Fish	Mylopharodon conocephalus	hardhead	AFCJB25010	None	None	SSC	-	3812154	SACRAMENTO EAST	Unprocessed	Animals - Fish - Cyprinidae - Mylopharodon conocephalus
Animals - Fish	Pogonichthys macrolepidotus	Sacramento splittail	AFCJB34020	None	None	SSC	-	3812154	SACRAMENTO EAST	Unprocessed	Animals - Fish - Cyprinidae - Pogonichthys macrolepidotus
Animals - Fish	Pogonichthys macrolepidotus	Sacramento splittail	AFCJB34020	None	None	SSC	-	3812155	SACRAMENTO WEST	Mapped and Unprocessed	Animals - Fish - Cyprinidae - Pogonichthys macrolepidotus
Animals - Fish	Pogonichthys macrolepidotus	Sacramento splittail	AFCJB34020	None	None	SSC	-	3812165	TAYLOR MONUMENT	Mapped and Unprocessed	Animals - Fish - Cyprinidae - Pogonichthys macrolepidotus
Animals - Fish	Pogonichthys macrolepidotus	Sacramento splittail	AFCJB34020	None	None	SSC	-	3812145	CLARKSBURG	Mapped and Unprocessed	Animals - Fish - Cyprinidae - Pogonichthys macrolepidotus
Animals - Fish	Pogonichthys macrolepidotus	Sacramento splittail	AFCJB34020	None	None	SSC	-	3812144	FLORIN	Mapped	Animals - Fish - Cyprinidae - Pogonichthys macrolepidotus
Animals - Fish	Hysterothorax traskii	Sacramento-San Joaquin tule perch	AFCQK02012	None	None	-	-	3812145	CLARKSBURG	Unprocessed	Animals - Fish - Embiotocidae - Hysterothorax traskii
Animals - Fish	Hysterothorax traskii	Sacramento-San Joaquin tule perch	AFCQK02012	None	None	-	-	3812165	TAYLOR MONUMENT	Unprocessed	Animals - Fish - Embiotocidae - Hysterothorax traskii
Animals - Fish	Hysterothorax traskii	Sacramento-San Joaquin tule perch	AFCQK02012	None	None	-	-	3812154	SACRAMENTO EAST	Unprocessed	Animals - Fish - Embiotocidae - Hysterothorax traskii
Animals - Fish	Hysterothorax traskii	Sacramento-San Joaquin tule perch	AFCQK02012	None	None	-	-	3812155	SACRAMENTO WEST	Unprocessed	Animals - Fish - Embiotocidae - Hysterothorax traskii
Animals - Fish	Hypomesus transpacificus	Delta smelt	AFCHB01040	Threatened	Endangered	-	-	3812155	SACRAMENTO WEST	Unprocessed	Animals - Fish - Osmeridae - Hypomesus transpacificus
Animals - Fish	Hypomesus transpacificus	Delta smelt	AFCHB01040	Threatened	Endangered	-	-	3812165	TAYLOR MONUMENT	Unprocessed	Animals - Fish - Osmeridae - Hypomesus transpacificus
Animals - Fish	Hypomesus transpacificus	Delta smelt	AFCHB01040	Threatened	Endangered	-	-	3812145	CLARKSBURG	Mapped and Unprocessed	Animals - Fish - Osmeridae - Hypomesus transpacificus
Animals - Fish	Hypomesus transpacificus	Delta smelt	AFCHB01040	Threatened	Endangered	-	-	3812154	SACRAMENTO EAST	Unprocessed	Animals - Fish - Osmeridae - Hypomesus transpacificus
Animals - Fish	Spirinchus thaleichthys	longfin smelt	AFCHB03010	Candidate	Threatened	-	-	3812145	CLARKSBURG	Mapped and Unprocessed	Animals - Fish - Osmeridae - Spirinchus thaleichthys
Animals - Fish	Spirinchus thaleichthys	longfin smelt	AFCHB03010	Candidate	Threatened	-	-	3812144	FLORIN	Mapped	Animals - Fish - Osmeridae - Spirinchus thaleichthys
Animals - Fish	Spirinchus thaleichthys	longfin smelt	AFCHB03010	Candidate	Threatened	-	-	3812165	TAYLOR MONUMENT	Mapped	Animals - Fish - Osmeridae - Spirinchus thaleichthys
Animals - Fish	Spirinchus thaleichthys	longfin smelt	AFCHB03010	Candidate	Threatened	-	-	3812155	SACRAMENTO WEST	Mapped and Unprocessed	Animals - Fish - Osmeridae - Spirinchus thaleichthys
Animals - Fish	Entosphenus tridentatus	Pacific lamprey	AFBAA02100	None	None	SSC	-	3812155	SACRAMENTO WEST	Unprocessed	Animals - Fish - Petromyzontidae - Entosphenus tridentatus

Animals - Fish	Entosphenus tridentatus	Pacific lamprey	AFBAA02100	None	None	SSC	-	3812154	SACRAMENTO EAST	Unprocessed	Animals - Fish - Petromyzontidae - Entosphenus tridentatus
Animals - Fish	Entosphenus tridentatus	Pacific lamprey	AFBAA02100	None	None	SSC	-	3812163	CITRUS HEIGHTS	Unprocessed	Animals - Fish - Petromyzontidae - Entosphenus tridentatus
Animals - Fish	Entosphenus tridentatus	Pacific lamprey	AFBAA02100	None	None	SSC	-	3812145	CLARKSBURG	Unprocessed	Animals - Fish - Petromyzontidae - Entosphenus tridentatus
Animals - Fish	Lampetra ayresii	western river lamprey	AFBAA02030	None	None	SSC	-	3812145	CLARKSBURG	Unprocessed	Animals - Fish - Petromyzontidae - Lampetra ayresii
Animals - Fish	Lampetra ayresii	western river lamprey	AFBAA02030	None	None	SSC	-	3812154	SACRAMENTO EAST	Unprocessed	Animals - Fish - Petromyzontidae - Lampetra ayresii
Animals - Fish	Lampetra ayresii	western river lamprey	AFBAA02030	None	None	SSC	-	3812155	SACRAMENTO WEST	Unprocessed	Animals - Fish - Petromyzontidae - Lampetra ayresii
Animals - Fish	Oncorhynchus mykiss irideus pop. 11	steelhead - Central Valley DPS	AFCHA0209K	Threatened	None	-	-	3812155	SACRAMENTO WEST	Mapped and Unprocessed	Animals - Fish - Salmonidae - Oncorhynchus mykiss irideus pop. 11
Animals - Fish	Oncorhynchus mykiss irideus pop. 11	steelhead - Central Valley DPS	AFCHA0209K	Threatened	None	-	-	3812154	SACRAMENTO EAST	Mapped and Unprocessed	Animals - Fish - Salmonidae - Oncorhynchus mykiss irideus pop. 11
Animals - Fish	Oncorhynchus mykiss irideus pop. 11	steelhead - Central Valley DPS	AFCHA0209K	Threatened	None	-	-	3812163	CITRUS HEIGHTS	Mapped	Animals - Fish - Salmonidae - Oncorhynchus mykiss irideus pop. 11
Animals - Fish	Oncorhynchus mykiss irideus pop. 11	steelhead - Central Valley DPS	AFCHA0209K	Threatened	None	-	-	3812164	RIO LINDA	Mapped	Animals - Fish - Salmonidae - Oncorhynchus mykiss irideus pop. 11
Animals - Fish	Oncorhynchus mykiss irideus pop. 11	steelhead - Central Valley DPS	AFCHA0209K	Threatened	None	-	-	3812165	TAYLOR MONUMENT	Mapped and Unprocessed	Animals - Fish - Salmonidae - Oncorhynchus mykiss irideus pop. 11
Animals - Fish	Oncorhynchus mykiss irideus pop. 11	steelhead - Central Valley DPS	AFCHA0209K	Threatened	None	-	-	3812153	CARMICHAEL	Mapped	Animals - Fish - Salmonidae - Oncorhynchus mykiss irideus pop. 11
Animals - Fish	Oncorhynchus mykiss irideus pop. 11	steelhead - Central Valley DPS	AFCHA0209K	Threatened	None	-	-	3812143	ELK GROVE	Mapped	Animals - Fish - Salmonidae - Oncorhynchus mykiss irideus pop. 11
Animals - Fish	Oncorhynchus mykiss irideus pop. 11	steelhead - Central Valley DPS	AFCHA0209K	Threatened	None	-	-	3812145	CLARKSBURG	Mapped and Unprocessed	Animals - Fish - Salmonidae - Oncorhynchus mykiss irideus pop. 11
Animals - Fish	Oncorhynchus mykiss irideus pop. 11	steelhead - Central Valley DPS	AFCHA0209K	Threatened	None	-	-	3812144	FLORIN	Mapped	Animals - Fish - Salmonidae - Oncorhynchus mykiss irideus pop. 11
Animals - Fish	Oncorhynchus tshawytscha pop. 11	chinook salmon - Central Valley spring-run ESU	AFCHA0205L	Threatened	Threatened	-	-	3812145	CLARKSBURG	Unprocessed	Animals - Fish - Salmonidae - Oncorhynchus tshawytscha pop. 11
Animals - Fish	Oncorhynchus tshawytscha pop. 11	chinook salmon - Central Valley spring-run ESU	AFCHA0205L	Threatened	Threatened	-	-	3812165	TAYLOR MONUMENT	Unprocessed	Animals - Fish - Salmonidae - Oncorhynchus tshawytscha pop. 11

Animals - Fish	Oncorhynchus tshawytscha pop. 11	chinook salmon - Central Valley spring-run ESU	AFCHA0205L	Threatened	Threatened	-	-	3812154	SACRAMENTO EAST	Unprocessed	Animals - Fish - Salmonidae - Oncorhynchus tshawytscha pop. 11
Animals - Fish	Oncorhynchus tshawytscha pop. 11	chinook salmon - Central Valley spring-run ESU	AFCHA0205L	Threatened	Threatened	-	-	3812155	SACRAMENTO WEST	Mapped and Unprocessed	Animals - Fish - Salmonidae - Oncorhynchus tshawytscha pop. 11
Animals - Fish	Oncorhynchus tshawytscha pop. 13	chinook salmon - Central Valley fall / late fall-run ESU	AFCHA0205N	None	None	SSC	-	3812155	SACRAMENTO WEST	Unprocessed	Animals - Fish - Salmonidae - Oncorhynchus tshawytscha pop. 13
Animals - Fish	Oncorhynchus tshawytscha pop. 13	chinook salmon - Central Valley fall / late fall-run ESU	AFCHA0205N	None	None	SSC	-	3812154	SACRAMENTO EAST	Unprocessed	Animals - Fish - Salmonidae - Oncorhynchus tshawytscha pop. 13
Animals - Fish	Oncorhynchus tshawytscha pop. 13	chinook salmon - Central Valley fall / late fall-run ESU	AFCHA0205N	None	None	SSC	-	3812165	TAYLOR MONUMENT	Unprocessed	Animals - Fish - Salmonidae - Oncorhynchus tshawytscha pop. 13
Animals - Fish	Oncorhynchus tshawytscha pop. 13	chinook salmon - Central Valley fall / late fall-run ESU	AFCHA0205N	None	None	SSC	-	3812145	CLARKSBURG	Unprocessed	Animals - Fish - Salmonidae - Oncorhynchus tshawytscha pop. 13
Animals - Fish	Oncorhynchus tshawytscha pop. 7	chinook salmon - Sacramento River winter-run ESU	AFCHA0205B	Endangered	Endangered	-	-	3812145	CLARKSBURG	Unprocessed	Animals - Fish - Salmonidae - Oncorhynchus tshawytscha pop. 7
Animals - Fish	Oncorhynchus tshawytscha pop. 7	chinook salmon - Sacramento River winter-run ESU	AFCHA0205B	Endangered	Endangered	-	-	3812165	TAYLOR MONUMENT	Unprocessed	Animals - Fish - Salmonidae - Oncorhynchus tshawytscha pop. 7
Animals - Fish	Oncorhynchus tshawytscha pop. 7	chinook salmon - Sacramento River winter-run ESU	AFCHA0205B	Endangered	Endangered	-	-	3812154	SACRAMENTO EAST	Unprocessed	Animals - Fish - Salmonidae - Oncorhynchus tshawytscha pop. 7
Animals - Fish	Oncorhynchus tshawytscha pop. 7	chinook salmon - Sacramento River winter-run ESU	AFCHA0205B	Endangered	Endangered	-	-	3812155	SACRAMENTO WEST	Mapped and Unprocessed	Animals - Fish - Salmonidae - Oncorhynchus tshawytscha pop. 7
Animals - Insects	Andrena subapasta	An andrenid bee	IIHYM35210	None	None	-	-	3812163	CITRUS HEIGHTS	Mapped	Animals - Insects - Andrenidae - Andrena subapasta
Animals - Insects	Cicindela hirticollis abrupta	Sacramento Valley tiger beetle	IICOL02106	None	None	-	-	3812155	SACRAMENTO WEST	Mapped	Animals - Insects - Carabidae - Cicindela hirticollis abrupta
Animals - Insects	Desmocerus californicus dimorphus	valley elderberry longhorn beetle	IICOL48011	Threatened	None	-	-	3812155	SACRAMENTO WEST	Mapped and Unprocessed	Animals - Insects - Cerambycidae - Desmocerus californicus dimorphus
Animals - Insects	Desmocerus californicus dimorphus	valley elderberry longhorn beetle	IICOL48011	Threatened	None	-	-	3812163	CITRUS HEIGHTS	Mapped and Unprocessed	Animals - Insects - Cerambycidae - Desmocerus californicus dimorphus
Animals - Insects	Desmocerus californicus dimorphus	valley elderberry longhorn beetle	IICOL48011	Threatened	None	-	-	3812165	TAYLOR MONUMENT	Mapped	Animals - Insects - Cerambycidae - Desmocerus californicus dimorphus

Animals - Insects	Desmocerus californicus dimorphus	valley elderberry longhorn beetle	IICOL48011	Threatened	None	-	-	3812153	CARMICHAEL	Mapped and Unprocessed	Animals - Insects - Cerambycidae - Desmocerus californicus dimorphus
Animals - Insects	Desmocerus californicus dimorphus	valley elderberry longhorn beetle	IICOL48011	Threatened	None	-	-	3812154	SACRAMENTO EAST	Mapped and Unprocessed	Animals - Insects - Cerambycidae - Desmocerus californicus dimorphus
Animals - Insects	Desmocerus californicus dimorphus	valley elderberry longhorn beetle	IICOL48011	Threatened	None	-	-	3812143	ELK GROVE	Mapped	Animals - Insects - Cerambycidae - Desmocerus californicus dimorphus
Animals - Insects	Hydrochara rickseckeri	Ricksecker's water scavenger beetle	IICOL5V010	None	None	-	-	3812153	CARMICHAEL	Mapped	Animals - Insects - Hydrophilidae - Hydrochara rickseckeri
Animals - Mammals	Vulpes vulpes patwin	Sacramento Valley red fox	AMAJA03015	None	None	-	-	3812163	CITRUS HEIGHTS	Unprocessed	Animals - Mammals - Canidae - Vulpes vulpes patwin
Animals - Mammals	Vulpes vulpes patwin	Sacramento Valley red fox	AMAJA03015	None	None	-	-	3812164	RIO LINDA	Unprocessed	Animals - Mammals - Canidae - Vulpes vulpes patwin
Animals - Mammals	Taxidea taxus	American badger	AMAJF04010	None	None	SSC	-	3812154	SACRAMENTO EAST	Mapped	Animals - Mammals - Mustelidae - Taxidea taxus
Animals - Mammals	Taxidea taxus	American badger	AMAJF04010	None	None	SSC	-	3812153	CARMICHAEL	Mapped and Unprocessed	Animals - Mammals - Mustelidae - Taxidea taxus
Animals - Mammals	Taxidea taxus	American badger	AMAJF04010	None	None	SSC	-	3812144	FLORIN	Mapped and Unprocessed	Animals - Mammals - Mustelidae - Taxidea taxus
Animals - Mammals	Taxidea taxus	American badger	AMAJF04010	None	None	SSC	-	3812145	CLARKSBURG	Mapped	Animals - Mammals - Mustelidae - Taxidea taxus
Animals - Mammals	Lasiurus blossevillii	western red bat	AMACC05060	None	None	SSC	-	3812145	CLARKSBURG	Unprocessed	Animals - Mammals - Vespertilionidae - Lasiurus blossevillii
Animals - Mammals	Lasiurus blossevillii	western red bat	AMACC05060	None	None	SSC	-	3812144	FLORIN	Unprocessed	Animals - Mammals - Vespertilionidae - Lasiurus blossevillii
Animals - Mammals	Lasiurus cinereus	hoary bat	AMACC05030	None	None	-	-	3812144	FLORIN	Unprocessed	Animals - Mammals - Vespertilionidae - Lasiurus cinereus
Animals - Mammals	Lasiurus cinereus	hoary bat	AMACC05030	None	None	-	-	3812145	CLARKSBURG	Unprocessed	Animals - Mammals - Vespertilionidae - Lasiurus cinereus
Animals - Mammals	Lasiurus cinereus	hoary bat	AMACC05030	None	None	-	-	3812155	SACRAMENTO WEST	Mapped	Animals - Mammals - Vespertilionidae - Lasiurus cinereus
Animals - Mammals	Myotis lucifugus	little brown bat	AMACC01010	None	None	-	-	3812144	FLORIN	Unprocessed	Animals - Mammals - Vespertilionidae - Myotis lucifugus
Animals - Mammals	Myotis lucifugus	little brown bat	AMACC01010	None	None	-	-	3812145	CLARKSBURG	Unprocessed	Animals - Mammals - Vespertilionidae - Myotis lucifugus
Animals - Mammals	Myotis yumanensis	Yuma myotis	AMACC01020	None	None	-	-	3812145	CLARKSBURG	Unprocessed	Animals - Mammals - Vespertilionidae - Myotis yumanensis

Animals - Mammals	Myotis yumanensis	Yuma myotis	AMACC01020	None	None	-	-	3812144	FLORIN	Unprocessed	Animals - Mammals - Vespertilionidae - Myotis yumanensis
Animals - Mollusks	Margaritifera falcata	western pearlshell	IMBIV27020	None	None	-	-	3812154	SACRAMENTO EAST	Unprocessed	Animals - Mollusks - Margaritiferidae - Margaritifera falcata
Animals - Mollusks	Gonidea angulata	western ridged mussel	IMBIV19010	None	None	-	-	3812154	SACRAMENTO EAST	Mapped	Animals - Mollusks - Unionidae - Gonidea angulata
Animals - Mollusks	Gonidea angulata	western ridged mussel	IMBIV19010	None	None	-	-	3812155	SACRAMENTO WEST	Mapped	Animals - Mollusks - Unionidae - Gonidea angulata
Animals - Mollusks	Gonidea angulata	western ridged mussel	IMBIV19010	None	None	-	-	3812164	RIO LINDA	Mapped	Animals - Mollusks - Unionidae - Gonidea angulata
Animals - Mollusks	Gonidea angulata	western ridged mussel	IMBIV19010	None	None	-	-	3812165	TAYLOR MONUMENT	Mapped	Animals - Mollusks - Unionidae - Gonidea angulata
Animals - Reptiles	Emys marmorata	western pond turtle	ARAAD02030	None	None	SSC	-	3812165	TAYLOR MONUMENT	Mapped and Unprocessed	Animals - Reptiles - Emydidae - Emys marmorata
Animals - Reptiles	Emys marmorata	western pond turtle	ARAAD02030	None	None	SSC	-	3812164	RIO LINDA	Mapped and Unprocessed	Animals - Reptiles - Emydidae - Emys marmorata
Animals - Reptiles	Emys marmorata	western pond turtle	ARAAD02030	None	None	SSC	-	3812163	CITRUS HEIGHTS	Unprocessed	Animals - Reptiles - Emydidae - Emys marmorata
Animals - Reptiles	Emys marmorata	western pond turtle	ARAAD02030	None	None	SSC	-	3812155	SACRAMENTO WEST	Unprocessed	Animals - Reptiles - Emydidae - Emys marmorata
Animals - Reptiles	Emys marmorata	western pond turtle	ARAAD02030	None	None	SSC	-	3812154	SACRAMENTO EAST	Unprocessed	Animals - Reptiles - Emydidae - Emys marmorata
Animals - Reptiles	Emys marmorata	western pond turtle	ARAAD02030	None	None	SSC	-	3812153	CARMICHAEL	Mapped and Unprocessed	Animals - Reptiles - Emydidae - Emys marmorata
Animals - Reptiles	Emys marmorata	western pond turtle	ARAAD02030	None	None	SSC	-	3812144	FLORIN	Mapped and Unprocessed	Animals - Reptiles - Emydidae - Emys marmorata
Animals - Reptiles	Emys marmorata	western pond turtle	ARAAD02030	None	None	SSC	-	3812143	ELK GROVE	Mapped	Animals - Reptiles - Emydidae - Emys marmorata
Animals - Reptiles	Emys marmorata	western pond turtle	ARAAD02030	None	None	SSC	-	3812145	CLARKSBURG	Unprocessed	Animals - Reptiles - Emydidae - Emys marmorata
Animals - Reptiles	Thamnophis gigas	giant gartersnake	ARADB36150	Threatened	Threatened	-	-	3812145	CLARKSBURG	Mapped	Animals - Reptiles - Natricidae - Thamnophis gigas
Animals - Reptiles	Thamnophis gigas	giant gartersnake	ARADB36150	Threatened	Threatened	-	-	3812143	ELK GROVE	Mapped	Animals - Reptiles - Natricidae - Thamnophis gigas
Animals - Reptiles	Thamnophis gigas	giant gartersnake	ARADB36150	Threatened	Threatened	-	-	3812144	FLORIN	Mapped	Animals - Reptiles - Natricidae - Thamnophis gigas
Animals - Reptiles	Thamnophis gigas	giant gartersnake	ARADB36150	Threatened	Threatened	-	-	3812155	SACRAMENTO WEST	Mapped	Animals - Reptiles - Natricidae - Thamnophis gigas
Animals - Reptiles	Thamnophis gigas	giant gartersnake	ARADB36150	Threatened	Threatened	-	-	3812164	RIO LINDA	Mapped and Unprocessed	Animals - Reptiles - Natricidae - Thamnophis gigas
Animals - Reptiles	Thamnophis gigas	giant gartersnake	ARADB36150	Threatened	Threatened	-	-	3812165	TAYLOR MONUMENT	Mapped and Unprocessed	Animals - Reptiles - Natricidae - Thamnophis gigas
Animals - Reptiles	Phrynosoma blainvillii	coast horned lizard	ARACF12100	None	None	SSC	-	3812163	CITRUS HEIGHTS	Unprocessed	Animals - Reptiles - Phrynosomatidae - Phrynosoma blainvillii

Animals - Reptiles	Phrynosoma blainvillii	coast horned lizard	ARACF12100	None	None	SSC	-	3812154	SACRAMENTO EAST	Unprocessed	Animals - Reptiles - Phrynosomatidae - Phrynosoma blainvillii
Community - Terrestrial	Elderberry Savanna	Elderberry Savanna	CTT63440CA	None	None	-	-	3812154	SACRAMENTO EAST	Mapped	Community - Terrestrial - Elderberry Savanna
Community - Terrestrial	Elderberry Savanna	Elderberry Savanna	CTT63440CA	None	None	-	-	3812155	SACRAMENTO WEST	Mapped	Community - Terrestrial - Elderberry Savanna
Community - Terrestrial	Great Valley Cottonwood Riparian Forest	Great Valley Cottonwood Riparian Forest	CTT61410CA	None	None	-	-	3812155	SACRAMENTO WEST	Mapped	Community - Terrestrial - Great Valley Cottonwood Riparian Forest
Community - Terrestrial	Great Valley Valley Oak Riparian Forest	Great Valley Valley Oak Riparian Forest	CTT61430CA	None	None	-	-	3812143	ELK GROVE	Mapped	Community - Terrestrial - Great Valley Valley Oak Riparian Forest
Community - Terrestrial	Northern Claypan Vernal Pool	Northern Claypan Vernal Pool	CTT44120CA	None	None	-	-	3812164	RIO LINDA	Mapped	Community - Terrestrial - Northern Claypan Vernal Pool
Community - Terrestrial	Northern Hardpan Vernal Pool	Northern Hardpan Vernal Pool	CTT44110CA	None	None	-	-	3812164	RIO LINDA	Mapped	Community - Terrestrial - Northern Hardpan Vernal Pool
Community - Terrestrial	Northern Hardpan Vernal Pool	Northern Hardpan Vernal Pool	CTT44110CA	None	None	-	-	3812144	FLORIN	Mapped	Community - Terrestrial - Northern Hardpan Vernal Pool
Community - Terrestrial	Northern Hardpan Vernal Pool	Northern Hardpan Vernal Pool	CTT44110CA	None	None	-	-	3812143	ELK GROVE	Mapped	Community - Terrestrial - Northern Hardpan Vernal Pool
Community - Terrestrial	Northern Hardpan Vernal Pool	Northern Hardpan Vernal Pool	CTT44110CA	None	None	-	-	3812153	CARMICHAEL	Mapped	Community - Terrestrial - Northern Hardpan Vernal Pool
Community - Terrestrial	Northern Volcanic Mud Flow Vernal Pool	Northern Volcanic Mud Flow Vernal Pool	CTT44132CA	None	None	-	-	3812163	CITRUS HEIGHTS	Mapped	Community - Terrestrial - Northern Volcanic Mud Flow Vernal Pool
Plants - Vascular	Sagittaria sanfordii	Sanford's arrowhead	PMALI040Q0	None	None	-	1B.2	3812163	CITRUS HEIGHTS	Mapped	Plants - Vascular - Alismataceae - Sagittaria sanfordii
Plants - Vascular	Sagittaria sanfordii	Sanford's arrowhead	PMALI040Q0	None	None	-	1B.2	3812164	RIO LINDA	Mapped and Unprocessed	Plants - Vascular - Alismataceae - Sagittaria sanfordii
Plants - Vascular	Sagittaria sanfordii	Sanford's arrowhead	PMALI040Q0	None	None	-	1B.2	3812154	SACRAMENTO EAST	Mapped and Unprocessed	Plants - Vascular - Alismataceae - Sagittaria sanfordii
Plants - Vascular	Sagittaria sanfordii	Sanford's arrowhead	PMALI040Q0	None	None	-	1B.2	3812153	CARMICHAEL	Mapped and Unprocessed	Plants - Vascular - Alismataceae - Sagittaria sanfordii
Plants - Vascular	Sagittaria sanfordii	Sanford's arrowhead	PMALI040Q0	None	None	-	1B.2	3812144	FLORIN	Mapped	Plants - Vascular - Alismataceae - Sagittaria sanfordii
Plants - Vascular	Sagittaria sanfordii	Sanford's arrowhead	PMALI040Q0	None	None	-	1B.2	3812143	ELK GROVE	Mapped and Unprocessed	Plants - Vascular - Alismataceae - Sagittaria sanfordii
Plants - Vascular	Lilaeopsis masonii	Mason's lilaeopsis	PDAP119030	None	Rare	-	1B.1	3812145	CLARKSBURG	Mapped	Plants - Vascular - Apiaceae - Lilaeopsis masonii
Plants - Vascular	Centromadia parryi ssp. parryi	pappose tarplant	PDAST4R0P2	None	None	-	1B.2	3812145	CLARKSBURG	Mapped	Plants - Vascular - Asteraceae - Centromadia parryi ssp. parryi
Plants - Vascular	Centromadia parryi ssp. rudis	Parry's rough tarplant	PDAST4R0P3	None	None	-	4.2	3812145	CLARKSBURG	Unprocessed	Plants - Vascular - Asteraceae - Centromadia parryi ssp. rudis

Plants - Vascular	Centromadia parryi ssp. rudis	Parry's rough tarplant	PDAST4R0P3	None	None	-	4.2	3812144	FLORIN	Unprocessed	Plants - Vascular - Asteraceae - Centromadia parryi ssp. rudis
Plants - Vascular	Centromadia parryi ssp. rudis	Parry's rough tarplant	PDAST4R0P3	None	None	-	4.2	3812165	TAYLOR MONUMENT	Unprocessed	Plants - Vascular - Asteraceae - Centromadia parryi ssp. rudis
Plants - Vascular	Centromadia parryi ssp. rudis	Parry's rough tarplant	PDAST4R0P3	None	None	-	4.2	3812155	SACRAMENTO WEST	Unprocessed	Plants - Vascular - Asteraceae - Centromadia parryi ssp. rudis
Plants - Vascular	Hesperevax caulescens	hogwallow starfish	PDASTE5020	None	None	-	4.2	3812144	FLORIN	Unprocessed	Plants - Vascular - Asteraceae - Hesperevax caulescens
Plants - Vascular	Lasthenia chrysantha	alkali-sink goldfields	PDAST5L030	None	None	-	1B.1	3812144	FLORIN	Mapped	Plants - Vascular - Asteraceae - Lasthenia chrysantha
Plants - Vascular	Symphytotrichum lentum	Suisun Marsh aster	PDASTE8470	None	None	-	1B.2	3812155	SACRAMENTO WEST	Mapped	Plants - Vascular - Asteraceae - Symphyotrichum lentum
Plants - Vascular	Lepidium latipes var. heckardii	Heckard's pepper-grass	PDBRA1M0K1	None	None	-	1B.2	3812144	FLORIN	Mapped	Plants - Vascular - Brassicaceae - Lepidium latipes var. heckardii
Plants - Vascular	Lepidium latipes var. heckardii	Heckard's pepper-grass	PDBRA1M0K1	None	None	-	1B.2	3812145	CLARKSBURG	Mapped	Plants - Vascular - Brassicaceae - Lepidium latipes var. heckardii
Plants - Vascular	Downingia pusilla	dwarf downingia	PDCAM060C0	None	None	-	2B.2	3812144	FLORIN	Mapped	Plants - Vascular - Campanulaceae - Downingia pusilla
Plants - Vascular	Downingia pusilla	dwarf downingia	PDCAM060C0	None	None	-	2B.2	3812143	ELK GROVE	Mapped	Plants - Vascular - Campanulaceae - Downingia pusilla
Plants - Vascular	Downingia pusilla	dwarf downingia	PDCAM060C0	None	None	-	2B.2	3812164	RIO LINDA	Mapped and Unprocessed	Plants - Vascular - Campanulaceae - Downingia pusilla
Plants - Vascular	Legenere limosa	legenere	PDCAM0C010	None	None	-	1B.1	3812164	RIO LINDA	Mapped	Plants - Vascular - Campanulaceae - Legenere limosa
Plants - Vascular	Legenere limosa	legenere	PDCAM0C010	None	None	-	1B.1	3812143	ELK GROVE	Mapped and Unprocessed	Plants - Vascular - Campanulaceae - Legenere limosa
Plants - Vascular	Legenere limosa	legenere	PDCAM0C010	None	None	-	1B.1	3812144	FLORIN	Mapped	Plants - Vascular - Campanulaceae - Legenere limosa
Plants - Vascular	Legenere limosa	legenere	PDCAM0C010	None	None	-	1B.1	3812153	CARMICHAEL	Mapped	Plants - Vascular - Campanulaceae - Legenere limosa
Plants - Vascular	Cuscuta obtusiflora var. glandulosa	Peruvian dodder	PDCUS01111	None	None	-	2B.2	3812144	FLORIN	Mapped	Plants - Vascular - Convolvulaceae - Cuscuta obtusiflora var. glandulosa
Plants - Vascular	Carex comosa	bristly sedge	PMCYP032Y0	None	None	-	2B.1	3812145	CLARKSBURG	Mapped	Plants - Vascular - Cyperaceae - Carex comosa
Plants - Vascular	Astragalus tener var. ferrisiae	Ferris' milk-vetch	PDFAB0F8R3	None	None	-	1B.1	3812155	SACRAMENTO WEST	Mapped	Plants - Vascular - Fabaceae - Astragalus tener var. ferrisiae
Plants - Vascular	Trifolium hydrophilum	saline clover	PDFAB400R5	None	None	-	1B.2	3812145	CLARKSBURG	Mapped	Plants - Vascular - Fabaceae - Trifolium hydrophilum
Plants - Vascular	Trifolium hydrophilum	saline clover	PDFAB400R5	None	None	-	1B.2	3812144	FLORIN	Mapped	Plants - Vascular - Fabaceae - Trifolium hydrophilum

Plants - Vascular	<i>Juncus leiospermus</i> var. <i>ahartii</i>	Ahart's dwarf rush	PMJUN011L1	None	None	-	1B.2	3812153	CARMICHAEL	Mapped	Plants - Vascular - Juncaceae - <i>Juncus leiospermus</i> var. <i>ahartii</i>
Plants - Vascular	<i>Fritillaria agrestis</i>	stinkbells	PMLIL0V010	None	None	-	4.2	3812154	SACRAMENTO EAST	Unprocessed	Plants - Vascular - Liliaceae - <i>Fritillaria agrestis</i>
Plants - Vascular	<i>Fritillaria agrestis</i>	stinkbells	PMLIL0V010	None	None	-	4.2	3812155	SACRAMENTO WEST	Unprocessed	Plants - Vascular - Liliaceae - <i>Fritillaria agrestis</i>
Plants - Vascular	<i>Fritillaria agrestis</i>	stinkbells	PMLIL0V010	None	None	-	4.2	3812164	RIO LINDA	Mapped and Unprocessed	Plants - Vascular - Liliaceae - <i>Fritillaria agrestis</i>
Plants - Vascular	<i>Fritillaria agrestis</i>	stinkbells	PMLIL0V010	None	None	-	4.2	3812163	CITRUS HEIGHTS	Mapped and Unprocessed	Plants - Vascular - Liliaceae - <i>Fritillaria agrestis</i>
Plants - Vascular	<i>Hibiscus lasiocarpus</i> var. <i>occidentalis</i>	woolly rose-mallow	PDMAL0H0R3	None	None	-	1B.2	3812155	SACRAMENTO WEST	Mapped	Plants - Vascular - Malvaceae - <i>Hibiscus lasiocarpus</i> var. <i>occidentalis</i>
Plants - Vascular	<i>Hibiscus lasiocarpus</i> var. <i>occidentalis</i>	woolly rose-mallow	PDMAL0H0R3	None	None	-	1B.2	3812144	FLORIN	Mapped	Plants - Vascular - Malvaceae - <i>Hibiscus lasiocarpus</i> var. <i>occidentalis</i>
Plants - Vascular	<i>Hibiscus lasiocarpus</i> var. <i>occidentalis</i>	woolly rose-mallow	PDMAL0H0R3	None	None	-	1B.2	3812145	CLARKSBURG	Mapped and Unprocessed	Plants - Vascular - Malvaceae - <i>Hibiscus lasiocarpus</i> var. <i>occidentalis</i>
Plants - Vascular	<i>Gratiola heterosepala</i>	Boggs Lake hedge-hyssop	PDSCR0R060	None	Endangered	-	1B.2	3812153	CARMICHAEL	Mapped	Plants - Vascular - Plantaginaceae - <i>Gratiola heterosepala</i>
Plants - Vascular	<i>Gratiola heterosepala</i>	Boggs Lake hedge-hyssop	PDSCR0R060	None	Endangered	-	1B.2	3812164	RIO LINDA	Mapped	Plants - Vascular - Plantaginaceae - <i>Gratiola heterosepala</i>
Plants - Vascular	<i>Gratiola heterosepala</i>	Boggs Lake hedge-hyssop	PDSCR0R060	None	Endangered	-	1B.2	3812143	ELK GROVE	Mapped	Plants - Vascular - Plantaginaceae - <i>Gratiola heterosepala</i>
Plants - Vascular	<i>Orcuttia tenuis</i>	slender Orcutt grass	PMPOA4G050	Threatened	Endangered	-	1B.1	3812143	ELK GROVE	Mapped	Plants - Vascular - Poaceae - <i>Orcuttia tenuis</i>
Plants - Vascular	<i>Orcuttia viscida</i>	Sacramento Orcutt grass	PMPOA4G070	Endangered	Endangered	-	1B.1	3812143	ELK GROVE	Mapped	Plants - Vascular - Poaceae - <i>Orcuttia viscida</i>
Plants - Vascular	<i>Orcuttia viscida</i>	Sacramento Orcutt grass	PMPOA4G070	Endangered	Endangered	-	1B.1	3812153	CARMICHAEL	Mapped	Plants - Vascular - Poaceae - <i>Orcuttia viscida</i>
Plants - Vascular	<i>Navarretia eriocephala</i>	hoary navarretia	PDPLM0C060	None	None	-	4.3	3812143	ELK GROVE	Unprocessed	Plants - Vascular - Polemoniaceae - <i>Navarretia eriocephala</i>
Plants - Vascular	<i>Brodiaea rosea</i> ssp. <i>vallicola</i>	valley brodiaea	PMLIL0C0K2	None	None	-	4.2	3812153	CARMICHAEL	Unprocessed	Plants - Vascular - Themidaceae - <i>Brodiaea rosea</i> ssp. <i>vallicola</i>
Plants - Vascular	<i>Brodiaea rosea</i> ssp. <i>vallicola</i>	valley brodiaea	PMLIL0C0K2	None	None	-	4.2	3812154	SACRAMENTO EAST	Unprocessed	Plants - Vascular - Themidaceae - <i>Brodiaea rosea</i> ssp. <i>vallicola</i>
Plants - Vascular	<i>Brodiaea rosea</i> ssp. <i>vallicola</i>	valley brodiaea	PMLIL0C0K2	None	None	-	4.2	3812164	RIO LINDA	Unprocessed	Plants - Vascular - Themidaceae - <i>Brodiaea rosea</i> ssp. <i>vallicola</i>
Plants - Vascular	<i>Brodiaea rosea</i> ssp. <i>vallicola</i>	valley brodiaea	PMLIL0C0K2	None	None	-	4.2	3812163	CITRUS HEIGHTS	Unprocessed	Plants - Vascular - Themidaceae - <i>Brodiaea rosea</i> ssp. <i>vallicola</i>

CNPS Special-Status Species List

Search Results

22 matches found. Click on scientific name for details

Search Criteria: 9-Quad include [3812163:3812153:3812143:3812155:3812165:3812164:3812144:3812154:3812145]

▲ SCIENTIFIC NAME	COMMON NAME	FAMILY	LIFEFORM	BLOOMING PERIOD	FED LIST	STATE LIST	GLOBAL RANK	STATE RANK	CA RARE PLANT RANK	PHOTO
Astragalus tener var. ferrisiae	Ferris' milk-vetch	Fabaceae	annual herb	Apr-May	None	None	G2T1	S1	1B.1	No Photo Available
Brodiaea rosea ssp. vallicola	valley brodiaea	Themidaceae	perennial bulbiferous herb	Apr-May(Jun)	None	None	G5T3	S3	4.2	No Photo Available
Carex comosa	bristly sedge	Cyperaceae	perennial rhizomatous herb	May-Sep	None	None	G5	S2	2B.1	 Dean Wm. Taylor 1997
Centromadia parryi ssp. parryi	pappose tarplant	Asteraceae	annual herb	May-Nov	None	None	G3T2	S2	1B.2	No Photo Available
Centromadia parryi ssp. rudis	Parry's rough tarplant	Asteraceae	annual herb	May-Oct	None	None	G3T3	S3	4.2	No Photo Available
Cuscuta obtusiflora var. glandulosa	Peruvian dodder	Convolvulaceae	annual vine (parasitic)	Jul-Oct	None	None	G5T4?	SH	2B.2	No Photo Available
Downingia pusilla	dwarf downingia	Campanulaceae	annual herb	Mar-May	None	None	GU	S2	2B.2	No Photo Available
Fritillaria agrestis	stinkbells	Liliaceae	perennial bulbiferous herb	Mar-Jun	None	None	G3	S3	4.2	No Photo Available
Gratiola heterosepala	Boggs Lake hedge-hyssop	Plantaginaceae	annual herb	Apr-Aug	None	CE	G2	S2	1B.2	No Photo Available
Hesperevax caulescens	hogwallow starfish	Asteraceae	annual herb	Mar-Jun	None	None	G3	S3	4.2	No Photo Available
Hibiscus lasiocarpus var. occidentalis	woolly rose-mallow	Malvaceae	perennial rhizomatous herb (emergent)	Jun-Sep	None	None	G5T3	S3	1B.2	No Photo Available
Juncus leiospermus var. ahartii	Ahart's dwarf rush	Juncaceae	annual herb	Mar-May	None	None	G2T1	S1	1B.2	No Photo Available
Lasthenia chrysantha	alkali-sink goldfields	Asteraceae	annual herb	Feb-Apr	None	None	G2	S2	1B.1	No Photo Available

Legenere limosa	legenere	Campanulaceae	annual herb	Apr-Jun	None	None	G2	S2	1B.1	No Photo Available
Lepidium latipes var. heckardii	Heckard's pepper-grass	Brassicaceae	annual herb	Mar-May	None	None	G4T1	S1	1B.2	No Photo Available
Lilaeopsis masonii	Mason's lilaeopsis	Apiaceae	perennial rhizomatous herb	Apr-Nov	None	CR	G2	S2	1B.1	No Photo Available
Navarretia eriocephala	hoary navarretia	Polemoniaceae	annual herb	May-Jun	None	None	G4?	S4?	4.3	No Photo Available
Orcuttia tenuis	slender Orcutt grass	Poaceae	annual herb	May-Sep(Oct)	FT	CE	G2	S2	1B.1	No Photo Available
Orcuttia viscida	Sacramento Orcutt grass	Poaceae	annual herb	Apr-Jul(Sep)	FE	CE	G1	S1	1B.1	No Photo Available
Sagittaria sanfordii	Sanford's arrowhead	Alismataceae	perennial rhizomatous herb (emergent)	May-Oct(Nov)	None	None	G3	S3	1B.2	No Photo Available
Symphyotrichum lentum	Suisun Marsh aster	Asteraceae	perennial rhizomatous herb	(Apr)May-Nov	None	None	G2	S2	1B.2	No Photo Available
Trifolium hydrophilum	saline clover	Fabaceae	annual herb	Apr-Jun	None	None	G2	S2	1B.2	No Photo Available

Showing 1 to 22 of 22 entries

Suggested Citation:

California Native Plant Society, Rare Plant Program. 2021. Inventory of Rare and Endangered Plants of California (online edition, v9-01 1.0). Website <https://www.rareplants.cnps.org> [accessed 3 November 2021].

CONTACT US

Send questions and comments to rareplants@cnps.org.

ABOUT THIS WEBSITE

- [About the Inventory](#)
- [Release Notes](#)
- [Advanced Search](#)
- [Glossary](#)

ABOUT CNPS

- [About the Rare Plant Program](#)
- [CNPS Home Page](#)
- [About CNPS](#)
- [Join CNPS](#)

CONTRIBUTORS

- [The Calflora Database](#)
- [The California Lichen Society](#)
- [California Natural Diversity Database](#)
- [The Jepson Flora Project](#)
- [The Consortium of California Herbaria](#)
- [CalPhotos](#)



USFWS Threatened or Endangered Species List

IPaC resource list

This report is an automatically generated list of species and other resources such as critical habitat (collectively referred to as *trust resources*) under the U.S. Fish and Wildlife Service's (USFWS) jurisdiction that are known or expected to be on or near the project area referenced below. The list may also include trust resources that occur outside of the project area, but that could potentially be directly or indirectly affected by activities in the project area. However, determining the likelihood and extent of effects a project may have on trust resources typically requires gathering additional site-specific (e.g., vegetation/species surveys) and project-specific (e.g., magnitude and timing of proposed activities) information.

Below is a summary of the project information you provided and contact information for the USFWS office(s) with jurisdiction in the defined project area. Please read the introduction to each section that follows (Endangered Species, Migratory Birds, USFWS Facilities, and NWI Wetlands) for additional information applicable to the trust resources addressed in that section.

Location

Sacramento County, California



Local office

Sacramento Fish And Wildlife Office

☎ (916) 414-6600

📠 (916) 414-6713

Federal Building
2800 Cottage Way, Room W-2605
Sacramento, CA 95825-1846

Endangered species

This resource list is for informational purposes only and does not constitute an analysis of project level impacts.

The primary information used to generate this list is the known or expected range of each species. Additional areas of influence (AOI) for species are also considered. An AOI includes areas outside of the species range if the species could be indirectly affected by activities in that area (e.g., placing a dam upstream of a fish population even if that fish does not occur at the dam site, may indirectly impact the species by reducing or eliminating water flow downstream). Because species can move, and site conditions can change, the species on this list are not guaranteed to be found on or near the project area. To fully determine any potential effects to species, additional site-specific and project-specific information is often required.

Section 7 of the Endangered Species Act **requires** Federal agencies to "request of the Secretary information whether any species which is listed or proposed to be listed may be present in the area of such proposed action" for any project that is conducted, permitted, funded, or licensed by any Federal agency. A letter from the local office and a species list which fulfills this requirement can **only** be obtained by requesting an official species list from either the Regulatory Review section in IPaC (see directions below) or from the local field office directly.

For project evaluations that require USFWS concurrence/review, please return to the IPaC website and request an official species list by doing the following:

1. Draw the project location and click CONTINUE.
2. Click DEFINE PROJECT.
3. Log in (if directed to do so).
4. Provide a name and description for your project.
5. Click REQUEST SPECIES LIST.

Listed species¹ and their critical habitats are managed by the [Ecological Services Program](#) of the U.S. Fish and Wildlife Service (USFWS) and the fisheries division of the National Oceanic and Atmospheric Administration (NOAA Fisheries²).

Species and critical habitats under the sole responsibility of NOAA Fisheries are **not** shown on this list. Please contact [NOAA Fisheries](#) for [species under their jurisdiction](#).

1. Species listed under the [Endangered Species Act](#) are threatened or endangered; IPaC also shows species that are candidates, or proposed, for listing. See the [listing status page](#) for more information. IPaC only shows species that are regulated by USFWS (see FAQ).
2. [NOAA Fisheries](#), also known as the National Marine Fisheries Service (NMFS), is an office of the National Oceanic and Atmospheric Administration within the Department of Commerce.

The following species are potentially affected by activities in this location:

Reptiles

NAME	STATUS
------	--------

Giant Garter Snake *Thamnophis gigas*

Threatened

Wherever found

No critical habitat has been designated for this species.

<https://ecos.fws.gov/ecp/species/4482>

Amphibians

NAME

STATUS

California Red-legged Frog *Rana draytonii*

Threatened

Wherever found

There is **final** critical habitat for this species. The location of the critical habitat is not available.<https://ecos.fws.gov/ecp/species/2891>**California Tiger Salamander** *Ambystoma californiense*

Threatened

There is **final** critical habitat for this species. The location of the critical habitat is not available.<https://ecos.fws.gov/ecp/species/2076>

Fishes

NAME

STATUS

Delta Smelt *Hypomesus transpacificus*

Threatened

Wherever found

There is **final** critical habitat for this species. The location of the critical habitat is not available.<https://ecos.fws.gov/ecp/species/321>

Insects

NAME

STATUS

Monarch Butterfly *Danaus plexippus*

Candidate

Wherever found

No critical habitat has been designated for this species.

<https://ecos.fws.gov/ecp/species/9743>**Valley Elderberry Longhorn Beetle** *Desmocerus californicus dimorphus*

Threatened

Wherever found

There is **final** critical habitat for this species. The location of the critical habitat is not available.<https://ecos.fws.gov/ecp/species/7850>

Crustaceans

NAME

STATUS

Vernal Pool Fairy Shrimp *Branchinecta lynchi***Threatened**

Wherever found

There is **final** critical habitat for this species. The location of the critical habitat is not available.

<https://ecos.fws.gov/ecp/species/498>

Vernal Pool Tadpole Shrimp *Lepidurus packardii***Endangered**

Wherever found

There is **final** critical habitat for this species. The location of the critical habitat is not available.

<https://ecos.fws.gov/ecp/species/2246>

Critical habitats

Potential effects to critical habitat(s) in this location must be analyzed along with the endangered species themselves.

THERE ARE NO CRITICAL HABITATS AT THIS LOCATION.

Migratory birds

Certain birds are protected under the Migratory Bird Treaty Act¹ and the Bald and Golden Eagle Protection Act².

Any person or organization who plans or conducts activities that may result in impacts to migratory birds, eagles, and their habitats should follow appropriate regulations and consider implementing appropriate conservation measures, as described [below](#).

1. The [Migratory Birds Treaty Act](#) of 1918.
2. The [Bald and Golden Eagle Protection Act](#) of 1940.

Additional information can be found using the following links:

- Birds of Conservation Concern <http://www.fws.gov/birds/management/managed-species/birds-of-conservation-concern.php>
- Measures for avoiding and minimizing impacts to birds <http://www.fws.gov/birds/management/project-assessment-tools-and-guidance/conservation-measures.php>
- Nationwide conservation measures for birds <http://www.fws.gov/migratorybirds/pdf/management/nationwidestandardconservationmeasures.pdf>

The birds listed below are birds of particular concern either because they occur on the [USFWS Birds of Conservation Concern](#) (BCC) list or warrant special attention in your project location. To learn more about the levels of concern for birds on your list and how this list is generated, see the FAQ [below](#). This is not a list of every bird you may find in this location, nor a guarantee that every bird on

this list will be found in your project area. To see exact locations of where birders and the general public have sighted birds in and around your project area, visit the [E-bird data mapping tool](#) (Tip: enter your location, desired date range and a species on your list). For projects that occur off the Atlantic Coast, additional maps and models detailing the relative occurrence and abundance of bird species on your list are available. Links to additional information about Atlantic Coast birds, and other important information about your migratory bird list, including how to properly interpret and use your migratory bird report, can be found [below](#).

For guidance on when to schedule activities or implement avoidance and minimization measures to reduce impacts to migratory birds on your list, click on the PROBABILITY OF PRESENCE SUMMARY at the top of your list to see when these birds are most likely to be present and breeding in your project area.

NAME

BREEDING SEASON (IF A BREEDING SEASON IS INDICATED FOR A BIRD ON YOUR LIST, THE BIRD MAY BREED IN YOUR PROJECT AREA SOMETIME WITHIN THE TIMEFRAME SPECIFIED, WHICH IS A VERY LIBERAL ESTIMATE OF THE DATES INSIDE WHICH THE BIRD BREEDS ACROSS ITS ENTIRE RANGE. "BREEDS ELSEWHERE" INDICATES THAT THE BIRD DOES NOT LIKELY BREED IN YOUR PROJECT AREA.)

Bald Eagle *Haliaeetus leucocephalus*

This is not a Bird of Conservation Concern (BCC) in this area, but warrants attention because of the Eagle Act or for potential susceptibilities in offshore areas from certain types of development or activities.

<https://ecos.fws.gov/ecp/species/1626>

Breeds Jan 1 to Aug 31

California Thrasher *Toxostoma redivivum*

This is a Bird of Conservation Concern (BCC) throughout its range in the continental USA and Alaska.

Breeds Jan 1 to Jul 31

Clark's Grebe *Aechmophorus clarkii*

This is a Bird of Conservation Concern (BCC) throughout its range in the continental USA and Alaska.

Breeds Jun 1 to Aug 31

Common Yellowthroat *Geothlypis trichas sinuosa*

This is a Bird of Conservation Concern (BCC) only in particular Bird Conservation Regions (BCRs) in the continental USA

<https://ecos.fws.gov/ecp/species/2084>

Breeds May 20 to Jul 31

Golden Eagle *Aquila chrysaetos*

Breeds Jan 1 to Aug 31

This is not a Bird of Conservation Concern (BCC) in this area, but warrants attention because of the Eagle Act or for potential susceptibilities in offshore areas from certain types of development or activities.

<https://ecos.fws.gov/ecp/species/1680>

Nuttall's Woodpecker *Picoides nuttallii*

Breeds Apr 1 to Jul 20

This is a Bird of Conservation Concern (BCC) only in particular Bird Conservation Regions (BCRs) in the continental USA

<https://ecos.fws.gov/ecp/species/9410>

Oak Titmouse *Baeolophus inornatus*

Breeds Mar 15 to Jul 15

This is a Bird of Conservation Concern (BCC) throughout its range in the continental USA and Alaska.

<https://ecos.fws.gov/ecp/species/9656>

Olive-sided Flycatcher *Contopus cooperi*

Breeds May 20 to Aug 31

This is a Bird of Conservation Concern (BCC) throughout its range in the continental USA and Alaska.

<https://ecos.fws.gov/ecp/species/3914>

Tricolored Blackbird *Agelaius tricolor*

Breeds Mar 15 to Aug 10

This is a Bird of Conservation Concern (BCC) throughout its range in the continental USA and Alaska.

<https://ecos.fws.gov/ecp/species/3910>

Wrentit *Chamaea fasciata*

Breeds Mar 15 to Aug 10

This is a Bird of Conservation Concern (BCC) throughout its range in the continental USA and Alaska.

Yellow-billed Magpie *Pica nuttalli*

Breeds Apr 1 to Jul 31

This is a Bird of Conservation Concern (BCC) throughout its range in the continental USA and Alaska.

<https://ecos.fws.gov/ecp/species/9726>

Probability of Presence Summary

The graphs below provide our best understanding of when birds of concern are most likely to be present in your project area. This information can be used to tailor and schedule your project activities to avoid or minimize impacts to birds. Please make sure you read and understand the FAQ "Proper Interpretation and Use of Your Migratory Bird Report" before using or attempting to interpret this report.

Probability of Presence (■)

Each green bar represents the bird's relative probability of presence in the 10km grid cell(s) your project overlaps during a particular week of the year. (A year is represented as 12 4-week months.) A taller bar indicates a higher probability of species presence. The survey effort (see below) can be used to establish a level of confidence in the presence score. One can have higher confidence in the presence score if the corresponding survey effort is also high.

How is the probability of presence score calculated? The calculation is done in three steps:

1. The probability of presence for each week is calculated as the number of survey events in the week where the species was detected divided by the total number of survey events for that week. For example, if in week 12 there were 20 survey events and the Spotted Towhee was found in 5 of them, the probability of presence of the Spotted Towhee in week 12 is 0.25.
2. To properly present the pattern of presence across the year, the relative probability of presence is calculated. This is the probability of presence divided by the maximum probability of presence across all weeks. For example, imagine the probability of presence in week 20 for the Spotted Towhee is 0.05, and that the probability of presence at week 12 (0.25) is the maximum of any week of the year. The relative probability of presence on week 12 is $0.25/0.25 = 1$; at week 20 it is $0.05/0.25 = 0.2$.
3. The relative probability of presence calculated in the previous step undergoes a statistical conversion so that all possible values fall between 0 and 10, inclusive. This is the probability of presence score.

To see a bar's probability of presence score, simply hover your mouse cursor over the bar.

Breeding Season (■)

Yellow bars denote a very liberal estimate of the time-frame inside which the bird breeds across its entire range. If there are no yellow bars shown for a bird, it does not breed in your project area.

Survey Effort (|)

Vertical black lines superimposed on probability of presence bars indicate the number of surveys performed for that species in the 10km grid cell(s) your project area overlaps. The number of surveys is expressed as a range, for example, 33 to 64 surveys.

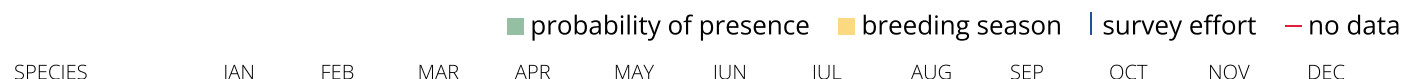
To see a bar's survey effort range, simply hover your mouse cursor over the bar.

No Data (—)

A week is marked as having no data if there were no survey events for that week.

Survey Timeframe

Surveys from only the last 10 years are used in order to ensure delivery of currently relevant information. The exception to this is areas off the Atlantic coast, where bird returns are based on all years of available data, since data in these areas is currently much more sparse.







Tricolored
Blackbird
BCC Rangeland
(CON) (This is a
Bird of
Conservation
Concern (BCC)
throughout its
range in the
continental USA
and Alaska.)



Wrentit
BCC Rangeland
(CON) (This is a
Bird of
Conservation
Concern (BCC)
throughout its
range in the
continental USA
and Alaska.)



Yellow-billed
Magpie
BCC Rangeland
(CON) (This is a
Bird of
Conservation
Concern (BCC)
throughout its
range in the
continental USA
and Alaska.)



Tell me more about conservation measures I can implement to avoid or minimize impacts to migratory birds.

[Nationwide Conservation Measures](#) describes measures that can help avoid and minimize impacts to all birds at any location year round. Implementation of these measures is particularly important when birds are most likely to occur in the project area. When birds may be breeding in the area, identifying the locations of any active nests and avoiding their destruction is a very helpful impact minimization measure. To see when birds are most likely to occur and be breeding in your project area, view the Probability of Presence Summary. [Additional measures](#) or [permits](#) may be advisable depending on the type of activity you are conducting and the type of infrastructure or bird species present on your project site.

What does IPaC use to generate the migratory birds potentially occurring in my specified location?

The Migratory Bird Resource List is comprised of USFWS [Birds of Conservation Concern \(BCC\)](#) and other species that may warrant special attention in your project location.

The migratory bird list generated for your project is derived from data provided by the [Avian Knowledge Network \(AKN\)](#). The AKN data is based on a growing collection of [survey, banding, and citizen science datasets](#) and is queried and filtered to return a list of those birds reported as occurring in the 10km grid cell(s) which your project intersects, and that have been identified as warranting special attention because they are a BCC species in that area, an eagle ([Eagle Act](#) requirements may apply), or a species that has a particular vulnerability to offshore activities or development.

Again, the Migratory Bird Resource list includes only a subset of birds that may occur in your project area. It is not representative of all birds that may occur in your project area. To get a list of all birds potentially present in your project area, please visit the [AKN Phenology Tool](#).

What does IPaC use to generate the probability of presence graphs for the migratory birds potentially occurring in my specified location?

The probability of presence graphs associated with your migratory bird list are based on data provided by the [Avian Knowledge Network \(AKN\)](#). This data is derived from a growing collection of [survey, banding, and citizen science datasets](#).

Probability of presence data is continuously being updated as new and better information becomes available. To learn more about how the probability of presence graphs are produced and how to interpret them, go the Probability of Presence Summary and then click on the "Tell me about these graphs" link.

How do I know if a bird is breeding, wintering, migrating or present year-round in my project area?

To see what part of a particular bird's range your project area falls within (i.e. breeding, wintering, migrating or year-round), you may refer to the following resources: [The Cornell Lab of Ornithology All About Birds Bird Guide](#), or (if you are unsuccessful in locating the bird of interest there), the [Cornell Lab of Ornithology Neotropical Birds guide](#). If a bird on your migratory bird species list has a breeding season associated with it, if that bird does occur in your project area, there may be nests present at some point within the timeframe specified. If "Breeds elsewhere" is indicated, then the bird likely does not breed in your project area.

What are the levels of concern for migratory birds?

Migratory birds delivered through IPaC fall into the following distinct categories of concern:

1. "BCC Rangewide" birds are [Birds of Conservation Concern](#) (BCC) that are of concern throughout their range anywhere within the USA (including Hawaii, the Pacific Islands, Puerto Rico, and the Virgin Islands);
2. "BCC - BCR" birds are BCCs that are of concern only in particular Bird Conservation Regions (BCRs) in the continental USA; and
3. "Non-BCC - Vulnerable" birds are not BCC species in your project area, but appear on your list either because of the [Eagle Act](#) requirements (for eagles) or (for non-eagles) potential susceptibilities in offshore areas from certain types of development or activities (e.g. offshore energy development or longline fishing).

Although it is important to try to avoid and minimize impacts to all birds, efforts should be made, in particular, to avoid and minimize impacts to the birds on this list, especially eagles and BCC species of rangewide concern. For more information on conservation measures you can implement to help avoid and minimize migratory bird impacts and requirements for eagles, please see the FAQs for these topics.

Details about birds that are potentially affected by offshore projects

For additional details about the relative occurrence and abundance of both individual bird species and groups of bird species within your project area off the Atlantic Coast, please visit the [Northeast Ocean Data Portal](#). The Portal also offers data and information about other taxa besides birds that may be helpful to you in your project review. Alternately, you may download the bird model results files underlying the portal maps through the [NOAA NCCOS Integrative Statistical Modeling and Predictive Mapping of Marine Bird Distributions and Abundance on the Atlantic Outer Continental Shelf](#) project webpage.

Bird tracking data can also provide additional details about occurrence and habitat use throughout the year, including migration. Models relying on survey data may not include this information. For additional information on marine bird tracking data, see the [Diving Bird Study](#) and the [nanotag studies](#) or contact [Caleb Spiegel](#) or [Pam Loring](#).

What if I have eagles on my list?

If your project has the potential to disturb or kill eagles, you may need to [obtain a permit](#) to avoid violating the Eagle Act should such impacts occur.

Proper Interpretation and Use of Your Migratory Bird Report

The migratory bird list generated is not a list of all birds in your project area, only a subset of birds of priority concern. To learn more about how your list is generated, and see options for identifying what other birds may be in your project area, please see the FAQ "What does IPaC use to generate the migratory birds potentially occurring in my specified location". Please be aware this report provides the "probability of presence" of birds within the 10 km grid cell(s) that overlap your project; not your exact project footprint. On the graphs provided, please also look carefully at the survey effort (indicated by the black vertical bar) and for the existence of the "no data" indicator (a red horizontal bar). A high survey effort is the key component. If the survey effort is high, then the probability of presence score can be viewed as more dependable. In contrast, a low survey effort bar or no data bar means a lack of data and, therefore, a lack of certainty about presence of the species. This list is not perfect; it is simply a starting point for identifying what birds of concern have the potential to be in your project area, when they might be there, and if they might be breeding (which means nests might be present). The list helps you know what to look for to confirm presence, and helps guide you in knowing when to implement conservation measures to avoid or minimize potential impacts from your project activities, should presence be confirmed. To learn more about conservation measures, visit the FAQ "Tell me about conservation measures I can implement to avoid or minimize impacts to migratory birds" at the bottom of your migratory bird trust resources page.

Facilities

National Wildlife Refuge lands

Any activity proposed on lands managed by the [National Wildlife Refuge](#) system must undergo a 'Compatibility Determination' conducted by the Refuge. Please contact the individual Refuges to discuss any questions or concerns.

THERE ARE NO REFUGE LANDS AT THIS LOCATION.

Fish hatcheries

THERE ARE NO FISH HATCHERIES AT THIS LOCATION.

Wetlands in the National Wetlands Inventory

Impacts to [NWI wetlands](#) and other aquatic habitats may be subject to regulation under Section 404 of the Clean Water Act, or other State/Federal statutes.

For more information please contact the Regulatory Program of the local [U.S. Army Corps of Engineers District](#).

THERE ARE NO KNOWN WETLANDS AT THIS LOCATION.

Data limitations

The Service's objective of mapping wetlands and deepwater habitats is to produce reconnaissance level information on the location, type and size of these resources. The maps are prepared from the analysis of high altitude imagery. Wetlands are identified based on vegetation, visible hydrology and geography. A margin of error is inherent in the use of imagery; thus, detailed on-the-ground inspection of any particular site may result in revision of the wetland boundaries or classification established through image analysis.

The accuracy of image interpretation depends on the quality of the imagery, the experience of the image analysts, the amount and quality of the collateral data and the amount of ground truth verification work conducted. Metadata should be consulted to determine the date of the source imagery used and any mapping problems.

Wetlands or other mapped features may have changed since the date of the imagery or field work. There may be occasional differences in polygon boundaries or classifications between the information depicted on the map and the actual conditions on site.

Data exclusions

Certain wetland habitats are excluded from the National mapping program because of the limitations of aerial imagery as the primary data source used to detect wetlands. These habitats include seagrasses or submerged aquatic vegetation that are found in the intertidal and subtidal zones of estuaries and nearshore coastal waters. Some deepwater reef communities (coral or tubercid worm reefs) have also been excluded from the inventory. These habitats, because of their depth, go undetected by aerial imagery.

Data precautions

Federal, state, and local regulatory agencies with jurisdiction over wetlands may define and describe wetlands in a different manner than that used in this inventory. There is no attempt, in either the design or products of this inventory, to define the limits of proprietary jurisdiction of any Federal, state, or local government or to establish the geographical scope of the regulatory programs of government agencies. Persons intending to engage in activities involving modifications within or adjacent to wetland areas should seek the advice of appropriate federal, state, or local agencies concerning specified agency regulatory programs and proprietary jurisdictions that may affect such activities.



ARBORIST REPORT SACRAMENTO, CA

January 28, 2022

CSU Sacramento - UEI

ATTN: Brigett Reilly

6000 J St.

Sacramento, Ca 95819

Phone: (916) 278-6313

Email: brigettr@csus.edu

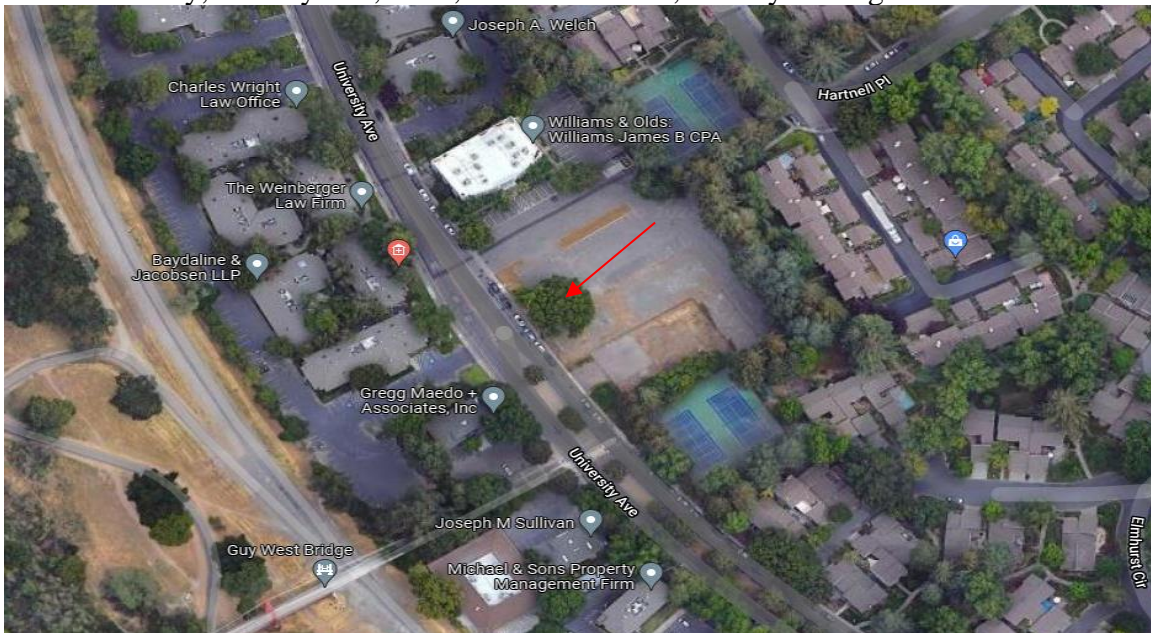
Re: 910 University Ave. Pre-Construction Tree Inspections

SCOPE OF WORK

The purpose of this report is to evaluate the current condition of two trees located on the west side of the property at 910 University Ave. There is a proposed housing project development, and I was requested to determine if the subject trees were worthy of preservation and capable of withstanding the proposed construction. I performed a visual inspection of the trees from ground level. I did not ascend into the canopies of the subject trees. This report should not be considered a formal tree risk assessment.

OBSERVATIONS

On Wednesday, January 19th, 2022, I visited the site, and my findings are as follows:



The red arrow in the above image depicts the location of the subject trees.



Tree #1- Sawtooth Zelkova (*Zelkova serrata*)

Diameter at Standard Height: 32 inches

Dripline Radius: 30 feet

Structural Condition: Fair. The subject tree has an open canopy with adequate branch spacing and taper. There are overextended branches on the south and west sides due to phototropism (growing toward the sun).

Vigor Condition: Fair. Dead branches up to 3 inches in diameter are scattered throughout the canopy.

Dripline Environment: Irrigated, compacted, silty-clay soil. The tree resided in a raised planter bed that has been removed (depicted by the yellow arrow below).

Recommendation: Prune to reduce branch end weight on overextended branches. Prune to crown clean dead branches 2 inches and larger. I recommend preserving the subject tree during the proposed development. I have included some recommendations for establishing a Tree Protection Zone during development on page 4.





Tree #2- Sweet Gum (*Liquidambar styraciflua*)

Diameter at Standard Height: 22 inches

Dripline Radius: 20 feet

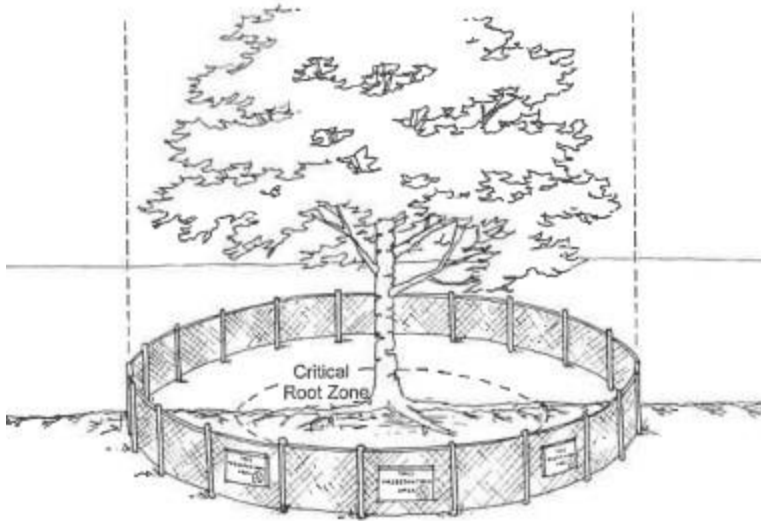
Structural Condition: Poor. The central lower branch union has included bark from a co-dominant attachment. There are several cavities from old pruning wounds on the main stem. (Seen below and depicted by the red arrows)

Vigor Condition: Fair. Dead branches up to 3 inches in diameter are scattered throughout the canopy.

Dripline Environment: Irrigated, compacted, silty-clay soil.

Recommendation: Remove to grade level due to defects compromising the subject tree's structure, leaving it prone to failure in adverse weather and otherwise.





Depicted above is the dripline method for establishing a TPZ (Tree Protection Zone), which should be established before the start of any grading, excavation, or construction. Fencing should be sturdy and highly visible to discourage entrance into or disturb the area. 4-foot-tall orange high-viz plastic net-type fencing is acceptable but not recommended. 6-foot-tall cyclone chain-link fencing is recommended. TPZ barriers should be clearly marked with signs stating the area is protected, and no one can enter or disturb soil without authorization from the project arborist. No construction equipment or materials should be stored inside the TPZ.

RECOMMENDATIONS AND DISCUSSION

In my professional opinion, an ISA Certified Arborist is recommended to supervise any excavation, grade changes, trenching performed beneath the canopies of the subject trees. An ISA Certified Arborist should direct all pruning.

Thank you for the opportunity to assist you in your tree assessment needs. If you have any questions or concerns, please contact me directly at (916) 417-1979.

Respectfully,

Kelley Gilleran
ASCA Registered Consulting Arborist #688
ISA Board Certified Master Arborist #7061-B



ASSUMPTIONS AND LIMITING CONDITIONS

1. Care has been taken to obtain all information from reliable sources. All data has been verified insofar as possible; however, the Consultant can neither guarantee nor be responsible for the accuracy of information provided by others.
2. The Consultant Will not be required to give testimony or to attend court by reason of this report unless subsequent contractual arrangements are made, including payment of an additional fee for such services as described in the fee schedule and contract of engagement.
3. Loss or alteration of any part of this report invalidates the entire report.
4. Possession of this report or a copy thereof does not imply right of publication or use for any purpose by any other than the person to whom it is addressed, without the prior written consent of the Consultant.
5. This report and any values expressed herein represent the opinion of the Consultant, and the Consultant's fee is in no way contingent upon the reporting of a stipulated result, a specified value, the occurrence of a subsequent event, nor upon any finding to be reported.
6. Unless expressed otherwise: 1) information contained in this report covers only those items that were examined and reflects the condition of those items at the time of inspection; and 2) the inspection is limited to visual examination of accessible items without dissection, excavation, or coring. There is no warranty or guarantee, expressed or implied, that problems or deficiencies of the tree(s) or property in question may not arise in the future.
7. Arborists are tree specialists who use their education, knowledge, training, and experience to examine trees, recommend measures to enhance the beauty and health of trees, and attempt to reduce the risk of living near trees. It is highly recommended that you follow the arborist recommendations; however, you may choose to accept or disregard the recommendations and/or seek additional advice.
8. Arborists cannot detect every condition that could possibly lead to the structural failure of a tree. Trees are living organisms that fail in ways we do not fully understand. Conditions are often hidden within trees and below ground. Arborists cannot guarantee that a tree Will be healthy or safe under all circumstances, or for a specific period of time. Likewise, remedial treatments performed cannot be guaranteed.
9. Any recommendations and/or performed treatments (including, but not limited to, pruning or removal) of trees may involve considerations beyond the scope of the arborist's services, such as property boundaries, property ownership, site lines, disputes between neighbors, and any other related issues. Arborists cannot take such considerations into account unless complete and accurate information is disclosed to the arborist. An arborist can then be expected to consider and reasonably rely on the completeness and accuracy of the information provided.
10. Trees can be managed, but they cannot be controlled. To live near trees is to accept some degree of risk. Trees carry risk. The only way to eliminate all risks associated with trees is to eliminate all trees.