

Space Utilization

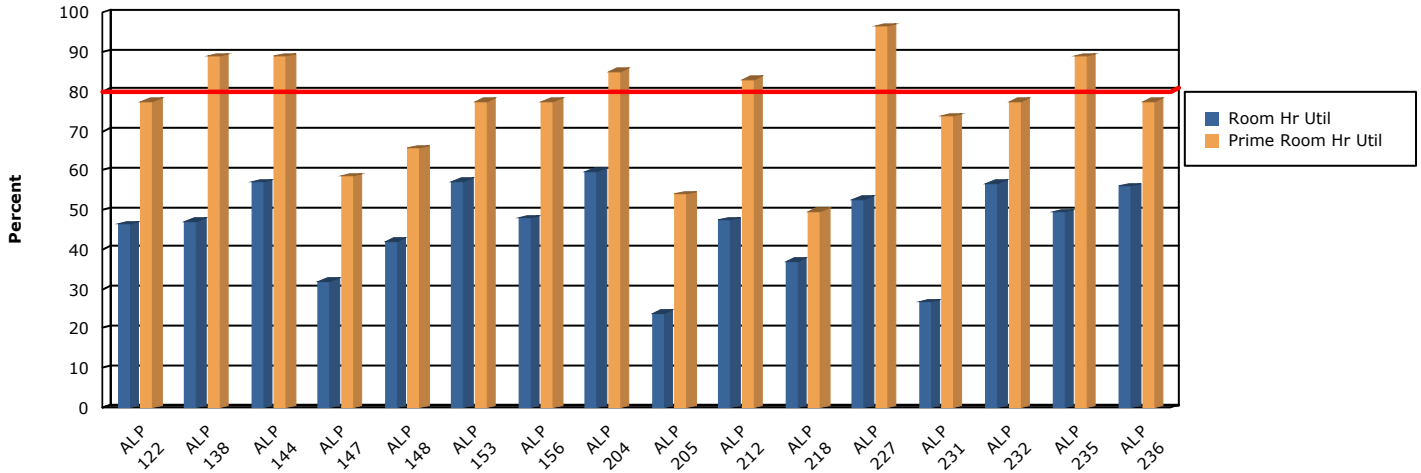
Average Weekly Utilization for Sections Only by Building and Room with Primetime

Term Weeks: 16.00 Hours in Standard Week: 70.00 Dates: 8/26/2024 - 12/6/2024

Standard Week: Monday, Tuesday, Wednesday, Thursday, Friday - 7:00 AM to 10:00 PM

Primetime: Monday, Tuesday, Wednesday, Thursday, Friday - 9:00 AM to 2:00 PM Hours in Primetime: 23.00

Building - Room	Roomtype	Room Hrs.	Room Hr. Util.	Prime Room Hrs.	Prime Room Hr. Util	Prime Ratio
MAIN - MAIN						
ALP						
122	Lecture	32.44	46.34%	17.81	77.45%	54.91%
138	Lecture	32.97	47.10%	20.44	88.86%	61.99%
144	Lecture	39.94	57.05%	20.44	88.86%	51.17%
147	Lecture	22.31	31.88%	13.44	58.42%	60.22%
148	Lecture	29.44	42.05%	15.09	65.63%	51.27%
153	Lecture	40.13	57.32%	17.81	77.45%	44.39%
156	Lecture	33.47	47.81%	17.81	77.45%	53.22%
204	Lecture	41.78	59.69%	19.56	85.05%	46.82%
205	Lecture	16.66	23.79%	12.41	53.94%	74.48%
212	Lecture	33.25	47.50%	19.09	83.02%	57.42%
218	Lecture	25.91	37.01%	11.41	49.59%	44.03%
227	Lecture	36.94	52.77%	22.19	96.47%	60.07%
231	Lecture	18.75	26.79%	16.94	73.64%	90.33%
232	Lecture	39.75	56.79%	17.81	77.45%	44.81%
235	Lecture	34.69	49.55%	20.44	88.86%	58.92%
236	Lecture	39.22	56.03%	17.81	77.45%	45.42%
ALP	16 room(s)	517.63	46.22%	280.50	76.22%	54.19%



AMD						
150	Lecture	36.19	51.70%	20.44	88.86%	56.48%
151	Lecture	32.16	45.94%	16.84	73.23%	52.38%
152	Lecture	39.25	56.07%	18.69	81.25%	47.61%
153	Lecture	31.19	44.55%	16.94	73.64%	54.31%
217	Lecture	36.44	52.05%	19.56	85.05%	53.69%
219	Lecture	21.38	30.54%	15.19	66.03%	71.05%
240	Lecture	17.57	25.10%	13.14	57.11%	74.75%
250	Lecture	26.81	38.30%	15.19	66.03%	56.64%
252	Lecture	31.97	45.67%	17.81	77.45%	55.72%
260	Lecture	32.09	45.85%	15.72	68.34%	48.98%

Space Utilization

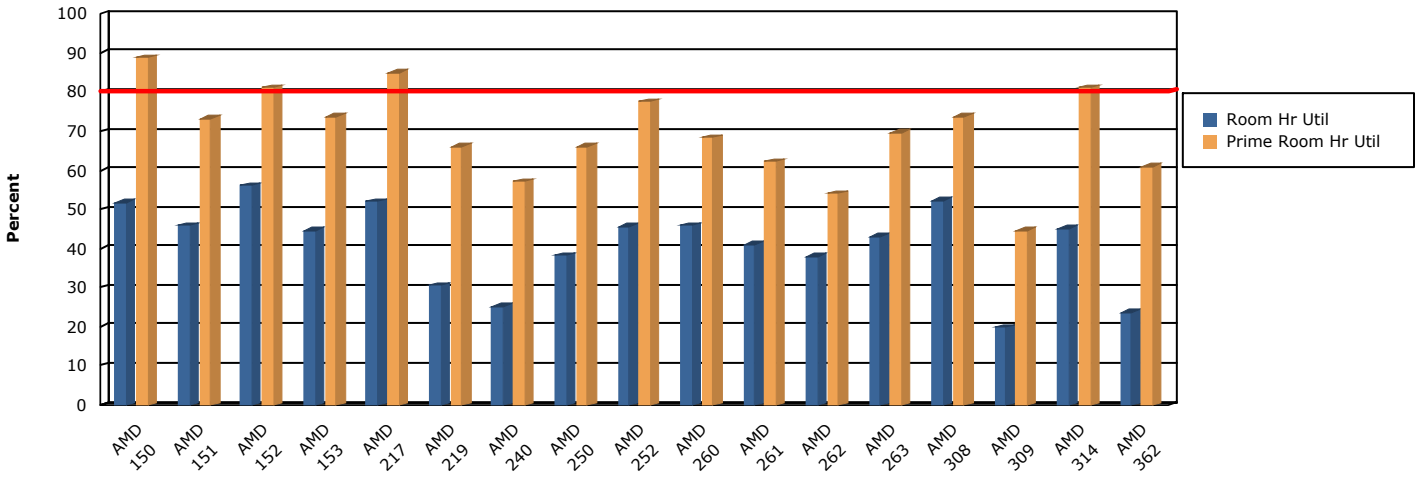
Average Weekly Utilization for Sections Only by Building and Room with Primetime

Term Weeks: 16.00 Hours in Standard Week: 70.00 Dates: 8/26/2024 - 12/6/2024

Standard Week: Monday, Tuesday, Wednesday, Thursday, Friday - 7:00 AM to 10:00 PM

Primetime: Monday, Tuesday, Wednesday, Thursday, Friday - 9:00 AM to 2:00 PM Hours in Primetime: 23.00

Building - Room	Roomtype	Room Hrs.	Room Hr. Util.	Prime Room Hrs.	Prime Room Hr. Util	Prime Ratio
261	Lecture	28.66	40.94%	14.31	62.23%	49.95%
262	Lecture	26.63	38.04%	12.44	54.08%	46.71%
263	Lecture	30.19	43.13%	16.03	69.70%	53.11%
308	Lecture	36.63	52.32%	16.94	73.64%	46.25%
309	Lecture	13.84	19.78%	10.28	44.70%	74.27%
314	Lecture	31.63	45.18%	18.69	81.25%	59.09%
362	Lecture	16.63	23.75%	14.00	60.87%	84.21%
AMD	17 room(s)	489.23	41.11%	272.20	69.62%	55.64%



Room	Roomtype	Room Hrs.	Room Hr. Util.	Prime Room Hrs.	Prime Room Hr. Util	Prime Ratio
1007	Lecture	39.16	55.94%	17.81	77.45%	45.49%
1008	Lecture	40.47	57.81%	18.69	81.25%	46.18%
1009	Lecture	40.03	57.19%	17.81	77.45%	44.50%
3004	Lecture	33.81	48.30%	16.47	71.60%	48.71%
3006	Lecture	33.84	48.35%	14.31	62.23%	42.29%
3009	Lecture	40.75	58.21%	15.38	66.85%	37.73%

Space Utilization

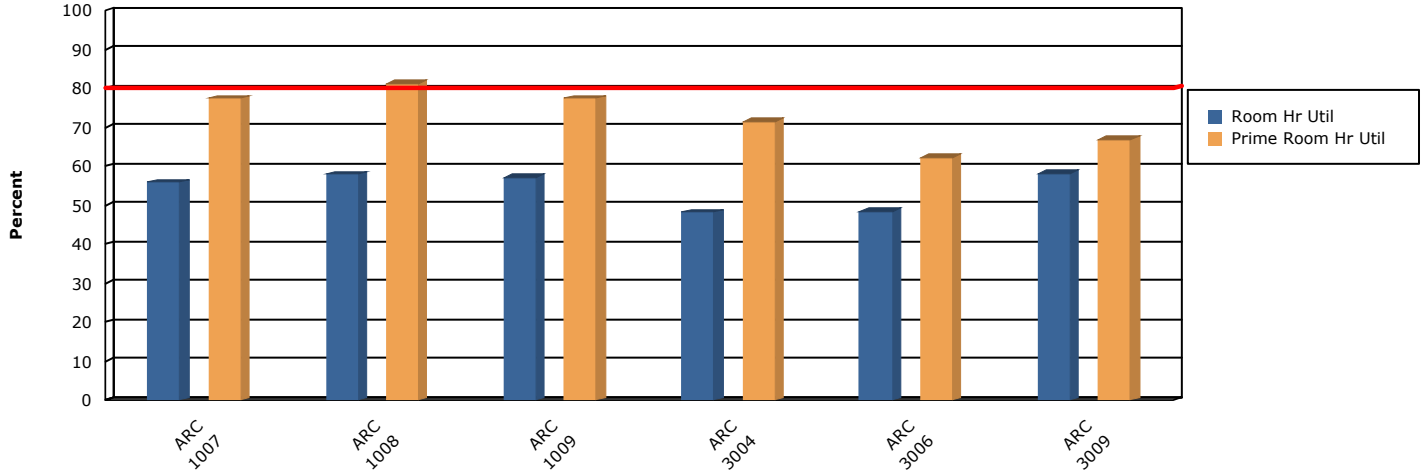
Average Weekly Utilization for Sections Only by Building and Room with Primetime

Term Weeks: 16.00 Hours in Standard Week: 70.00 Dates: 8/26/2024 - 12/6/2024

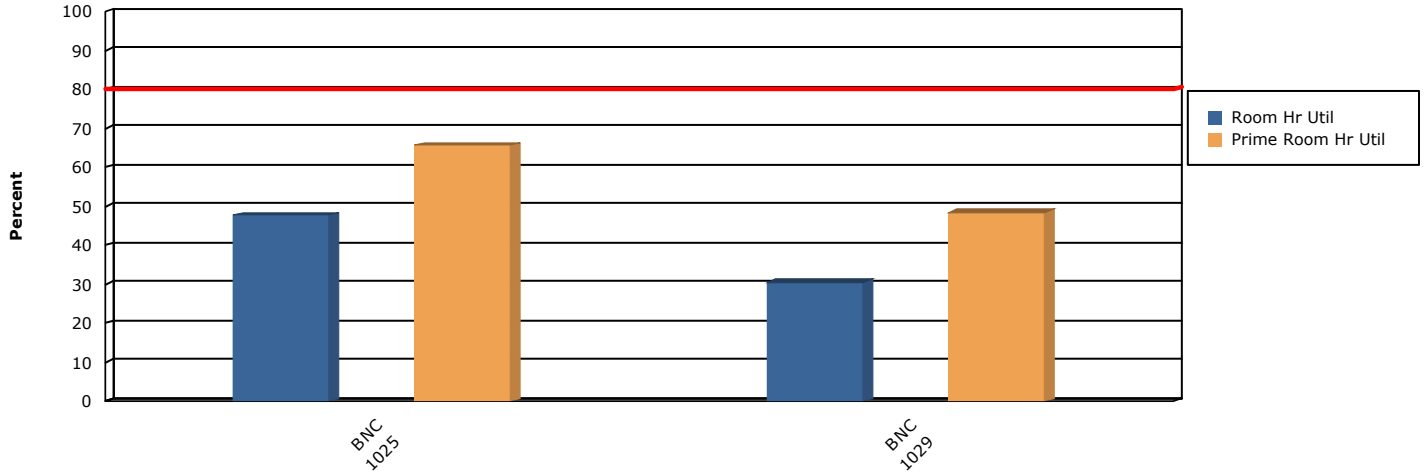
Standard Week: Monday, Tuesday, Wednesday, Thursday, Friday - 7:00 AM to 10:00 PM

Primetime: Monday, Tuesday, Wednesday, Thursday, Friday - 9:00 AM to 2:00 PM Hours in Primetime: 23.00

Building - Room	Roomtype	Room Hrs.	Room Hr. Util.	Prime Room Hrs.	Prime Room Hr. Util	Prime Ratio
ARC	6 room(s)	228.06	54.30%	100.47	72.80%	44.05%



BNC						
1025	Lecture	33.31	47.59%	15.13	65.76%	45.40%
1029	Lecture	21.31	30.45%	11.16	48.51%	52.35%
BNC	2 room(s)	54.63	39.02%	26.28	57.13%	48.11%



BRH						
101	Lecture	32.50	46.43%	20.44	88.86%	62.88%
104	Lecture	42.63	60.89%	19.56	85.05%	45.89%
105	Lecture	31.22	44.60%	19.56	85.05%	62.66%
109	Lecture	24.59	35.13%	19.00	82.61%	77.26%
110	Lecture	36.47	52.10%	17.06	74.18%	46.79%
113	Lecture	36.56	52.23%	19.44	84.51%	53.16%
114	Lecture	40.13	57.32%	17.81	77.45%	44.39%
115	Lecture	34.84	49.78%	16.94	73.64%	48.61%

Space Utilization

Average Weekly Utilization for Sections Only by Building and Room with Primetime

10/31/2024

12:34 pm

Term Weeks: 16.00

Hours in Standard Week: 70.00

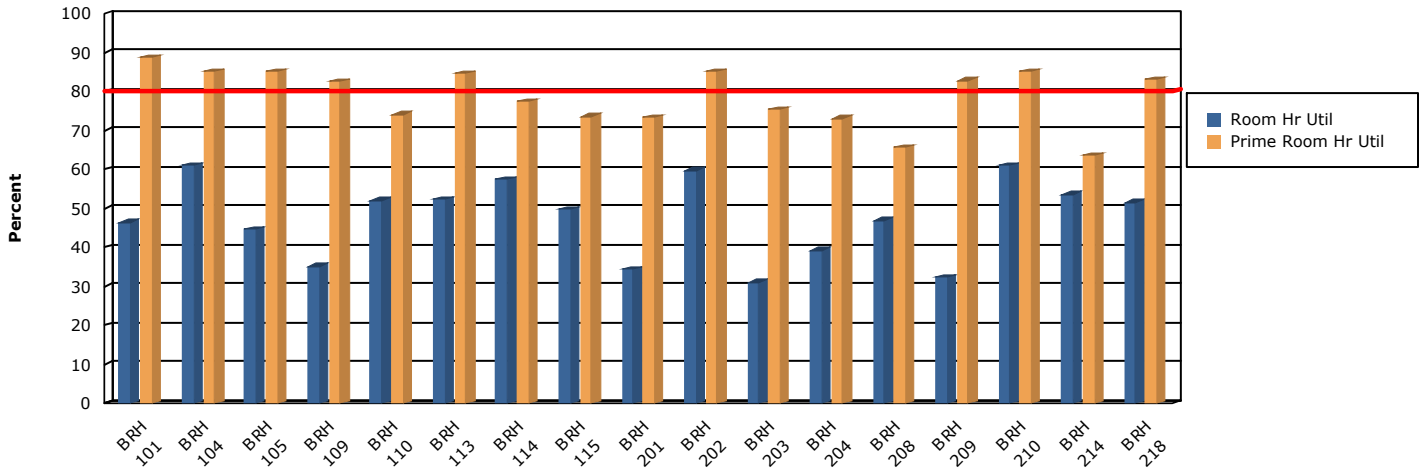
Dates: 8/26/2024 - 12/6/2024

Standard Week: Monday, Tuesday, Wednesday, Thursday, Friday - 7:00 AM to 10:00 PM

Primetime: Monday, Tuesday, Wednesday, Thursday, Friday - 9:00 AM to 2:00 PM

Hours in Primetime: 23.00

Building - Room	Roomtype	Room Hrs.	Room Hr. Util.	Prime Room Hrs.	Prime Room Hr. Util	Prime Ratio
201	Lecture	23.97	34.24%	16.88	73.37%	70.40%
202	Lecture	41.78	59.69%	19.56	85.05%	46.82%
203	Lecture	21.78	31.12%	17.34	75.41%	79.63%
204	Lecture	27.53	39.33%	16.78	72.96%	60.95%
208	Lecture	32.88	46.96%	15.09	65.63%	45.91%
209	Lecture	22.56	32.23%	19.03	82.74%	84.35%
210	Lecture	42.66	60.94%	19.56	85.05%	45.86%
214	Lecture	37.53	53.62%	14.63	63.59%	38.97%
218	Lecture	36.00	51.43%	19.13	83.15%	53.13%
BRH	17 room(s)	565.63	47.53%	307.81	78.72%	54.42%



CLV	Roomtype	Room Hrs.	Room Hr. Util.	Prime Room Hrs.	Prime Room Hr. Util	Prime Ratio
123	Lecture	26.53	37.90%	13.00	56.52%	49.00%
134	Lecture	38.72	55.31%	20.44	88.86%	52.78%
135	Lecture	39.31	56.16%	18.16	78.94%	46.18%
141	Lecture	24.09	34.42%	12.00	52.17%	49.81%
145	Lecture	26.03	37.19%	15.25	66.30%	58.58%

Space Utilization

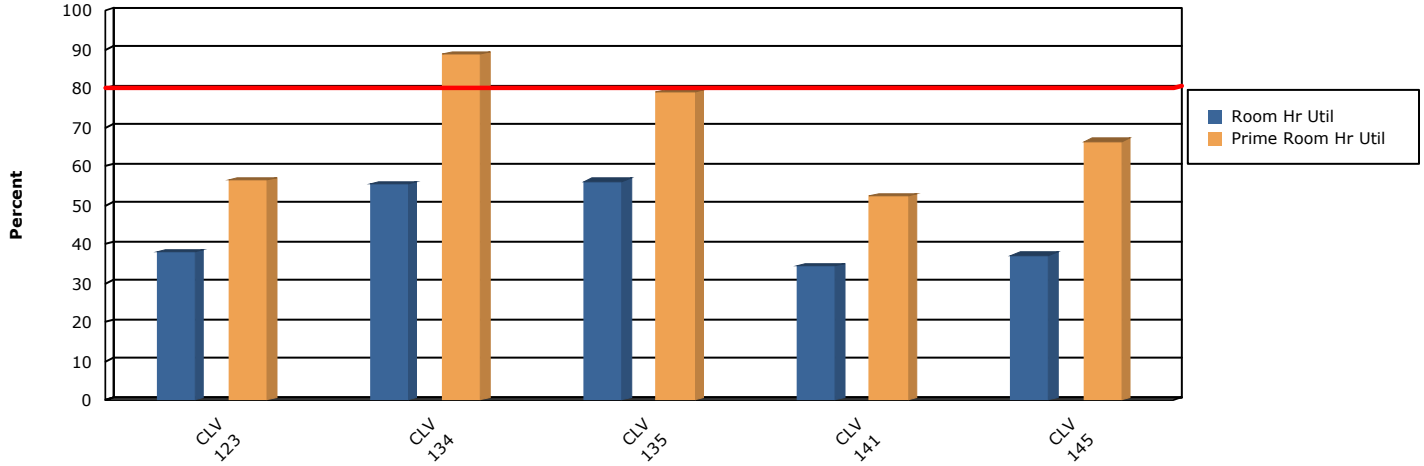
Average Weekly Utilization for Sections Only by Building and Room with Primetime

Term Weeks: 16.00 Hours in Standard Week: 70.00 Dates: 8/26/2024 - 12/6/2024

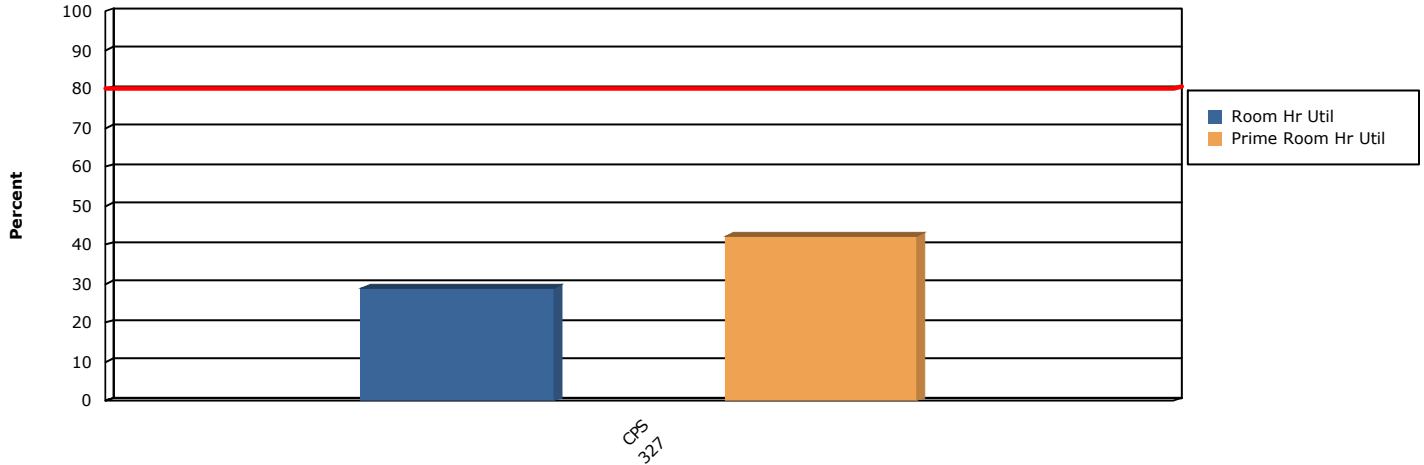
Standard Week: Monday, Tuesday, Wednesday, Thursday, Friday - 7:00 AM to 10:00 PM

Primetime: Monday, Tuesday, Wednesday, Thursday, Friday - 9:00 AM to 2:00 PM Hours in Primetime: 23.00

Building - Room	Roomtype	Room Hrs.	Room Hr. Util.	Prime Room Hrs.	Prime Room Hr. Util	Prime Ratio
CLV	5 room(s)	154.69	44.20%	78.84	68.56%	50.97%



CPS						
327	Lecture	20.31	29.02%	9.72	42.26%	47.85%
CPS	1 room(s)	20.31	29.02%	9.72	42.26%	47.85%



DH						
105	Lecture	37.41	53.44%	20.44	88.86%	54.64%
106	Lecture	43.63	62.32%	19.56	85.05%	44.84%
107	Lecture	29.34	41.92%	19.47	84.65%	66.35%
108	Lecture	32.41	46.29%	18.66	81.11%	57.57%
109	Lecture	44.50	63.57%	19.56	85.05%	43.96%
110	Lecture	35.56	50.80%	18.69	81.25%	52.55%
111	Lecture	40.41	57.72%	17.81	77.45%	44.08%
206	Lecture	36.03	51.47%	15.41	66.98%	42.76%
208	Lecture	33.72	48.17%	17.81	77.45%	52.83%

Space Utilization

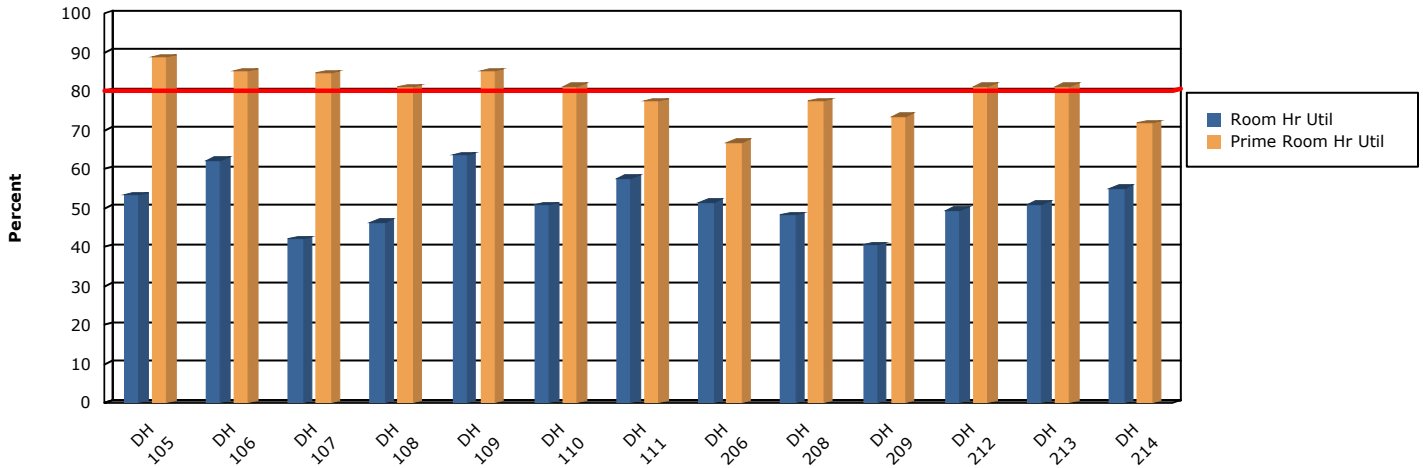
Average Weekly Utilization for Sections Only by Building and Room with Primitime

Term Weeks: 16.00 Hours in Standard Week: 70.00 Dates: 8/26/2024 - 12/6/2024

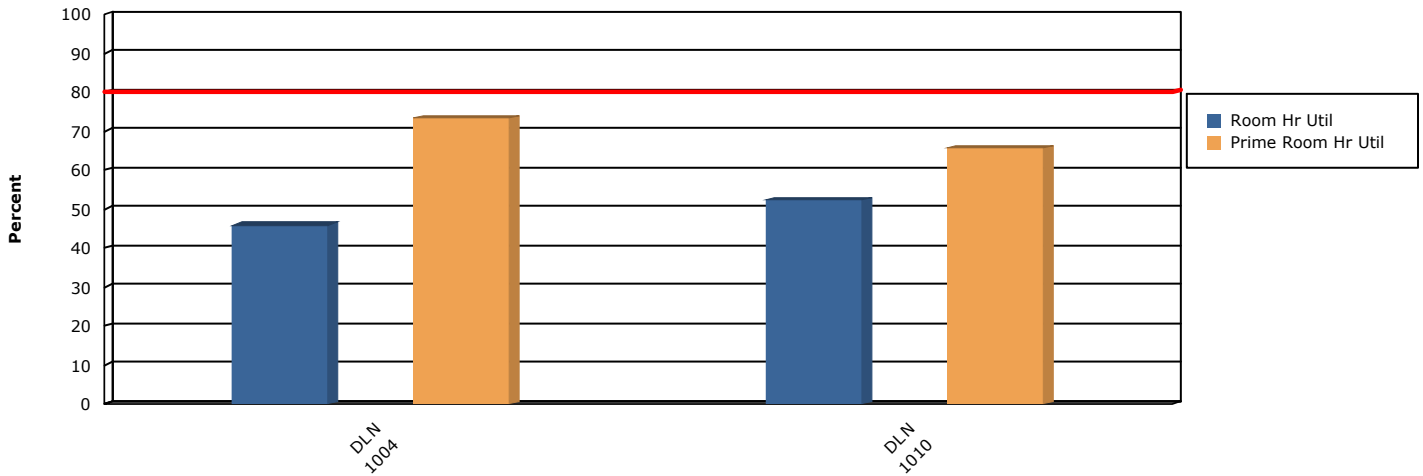
Standard Week: Monday, Tuesday, Wednesday, Thursday, Friday - 7:00 AM to 10:00 PM

Primitime: Monday, Tuesday, Wednesday, Thursday, Friday - 9:00 AM to 2:00 PM Hours in Primitime: 23.00

Building - Room	Roomtype	Room Hrs.	Room Hr. Util.	Prime Room Hrs.	Prime Room Hr. Util	Prime Ratio
209	Lecture	28.34	40.49%	16.91	73.51%	59.65%
212	Lecture	34.69	49.55%	18.69	81.25%	53.87%
213	Lecture	35.75	51.07%	18.69	81.25%	52.27%
214	Lecture	38.66	55.22%	16.50	71.74%	42.68%
DH	13 room(s)	470.44	51.70%	238.19	79.66%	50.63%



DLN	Roomtype	Room Hrs.	Room Hr. Util.	Prime Room Hrs.	Prime Room Hr. Util	Prime Ratio
1004	Lecture	32.06	45.80%	16.84	73.23%	52.53%
1010	Lecture	36.66	52.37%	15.13	65.76%	41.26%
DLN	2 room(s)	68.72	49.08%	31.97	69.50%	46.52%



DTN	Roomtype	Room Hrs.	Room Hr. Util.	Prime Room Hrs.	Prime Room Hr. Util	Prime Ratio
108	Lecture	13.13	18.75%	4.06	17.66%	30.95%
109	Lecture	2.44	3.48%	0.00	0.00%	0.00%
110	Lecture	10.69	15.27%	0.00	0.00%	0.00%

Space Utilization

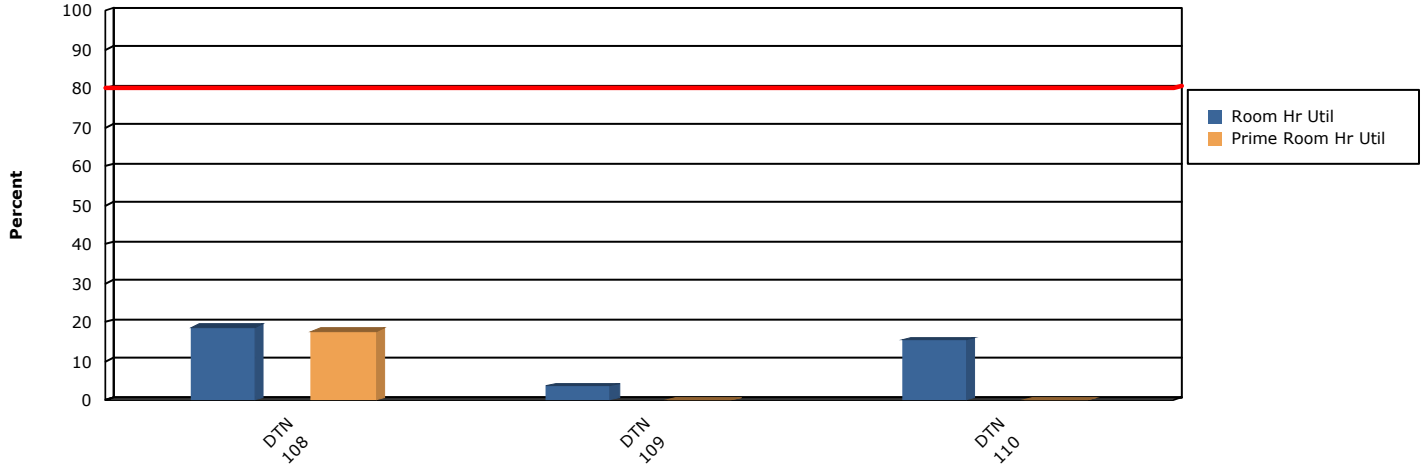
Average Weekly Utilization for Sections Only by Building and Room with Primetime

Term Weeks: 16.00 Hours in Standard Week: 70.00 Dates: 8/26/2024 - 12/6/2024

Standard Week: Monday, Tuesday, Wednesday, Thursday, Friday - 7:00 AM to 10:00 PM

Primetime: Monday, Tuesday, Wednesday, Thursday, Friday - 9:00 AM to 2:00 PM Hours in Primetime: 23.00

Building - Room	Roomtype	Room Hrs.	Room Hr. Util.	Prime Room Hrs.	Prime Room Hr. Util	Prime Ratio
DTN	3 room(s)	26.25	12.50%	4.06	5.89%	15.48%



EUR	Roomtype	Room Hrs.	Room Hr. Util.	Prime Room Hrs.	Prime Room Hr. Util	Prime Ratio
101	Lecture	31.88	45.54%	15.00	65.22%	47.06%
102	Lecture	30.59	43.71%	18.19	79.08%	59.45%
103	Lecture	33.56	47.95%	16.00	69.57%	47.67%
104	Lecture	30.56	43.66%	16.66	72.42%	54.50%
105	Lecture	31.06	44.38%	15.75	68.48%	50.70%
106	Lecture	36.53	52.19%	16.56	72.01%	45.34%
107	Lecture	30.00	42.86%	17.78	77.31%	59.27%
108	Lecture	28.03	40.04%	12.56	54.62%	44.82%
109	Lecture	25.72	36.74%	13.81	60.05%	53.71%
111	Lecture	34.91	49.87%	17.28	75.14%	49.51%
112	Lecture	30.38	43.39%	14.03	61.01%	46.19%
113	Lecture	27.16	38.79%	11.69	50.82%	43.04%
114	Lecture	26.09	37.28%	17.72	77.04%	67.90%
115	Lecture	30.53	43.62%	14.19	61.68%	46.47%
309	Lecture	22.66	32.37%	10.31	44.84%	45.52%
315	Lecture	24.34	34.78%	10.88	47.28%	44.67%
320	Lecture	33.09	47.28%	12.16	52.85%	36.73%
413C	Lecture	32.13	45.89%	13.38	58.15%	41.63%

Space Utilization

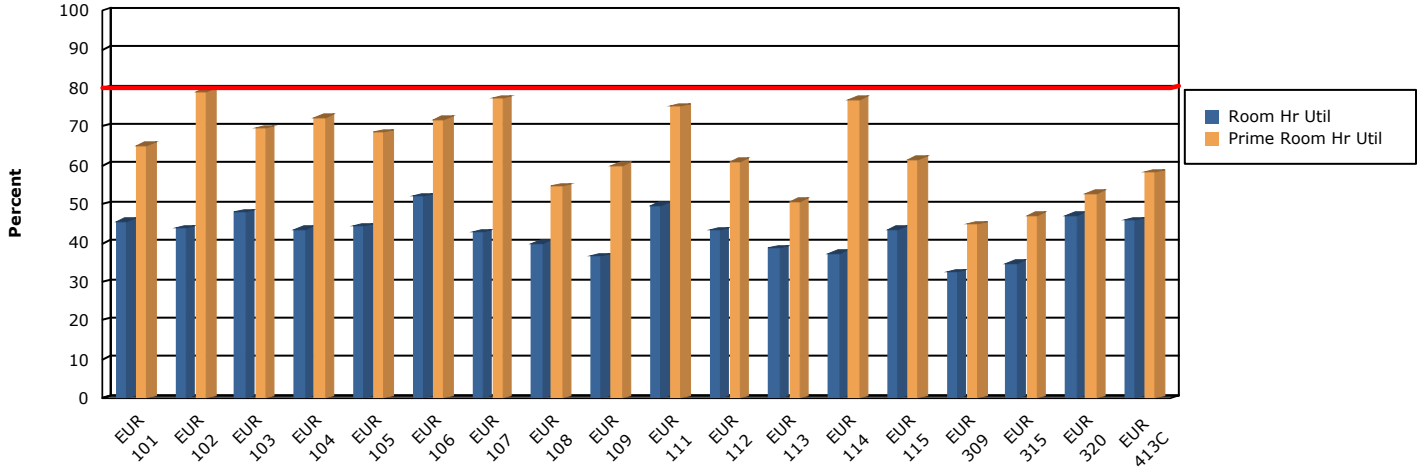
Average Weekly Utilization for Sections Only by Building and Room with Primetime

Term Weeks: 16.00 Hours in Standard Week: 70.00 Dates: 8/26/2024 - 12/6/2024

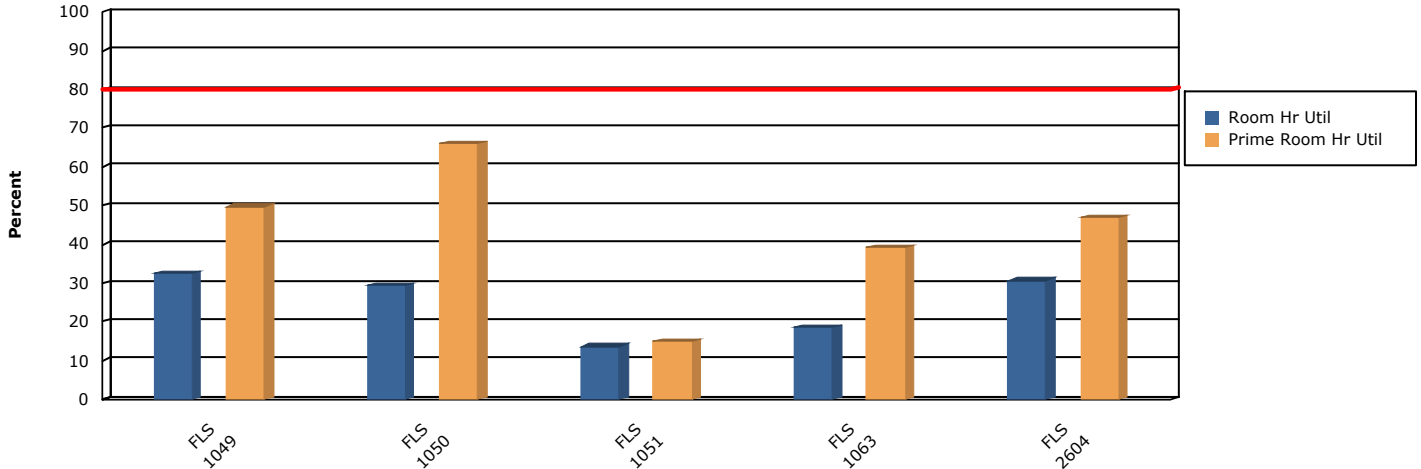
Standard Week: Monday, Tuesday, Wednesday, Thursday, Friday - 7:00 AM to 10:00 PM

Primetime: Monday, Tuesday, Wednesday, Thursday, Friday - 9:00 AM to 2:00 PM Hours in Primetime: 23.00

Building - Room	Roomtype	Room Hrs.	Room Hr. Util.	Prime Room Hrs.	Prime Room Hr. Util	Prime Ratio
EUR	18 room(s)	539.22	42.80%	263.94	63.75%	48.95%



FLS						
1049	Lecture	22.78	32.54%	11.47	49.86%	50.34%
1050	Lecture	20.50	29.29%	15.19	66.03%	74.09%
1051	Lecture	9.56	13.66%	3.44	14.95%	35.95%
1063	Lecture	13.03	18.62%	9.02	39.22%	69.22%
2604	Lecture	21.53	30.76%	10.78	46.88%	50.07%
FLS	5 room(s)	87.41	24.97%	49.90	43.39%	57.08%



HMB						
109	Lecture	33.28	47.54%	19.53	84.92%	58.69%
202	Lecture	29.28	41.83%	19.50	84.78%	66.60%

Space Utilization

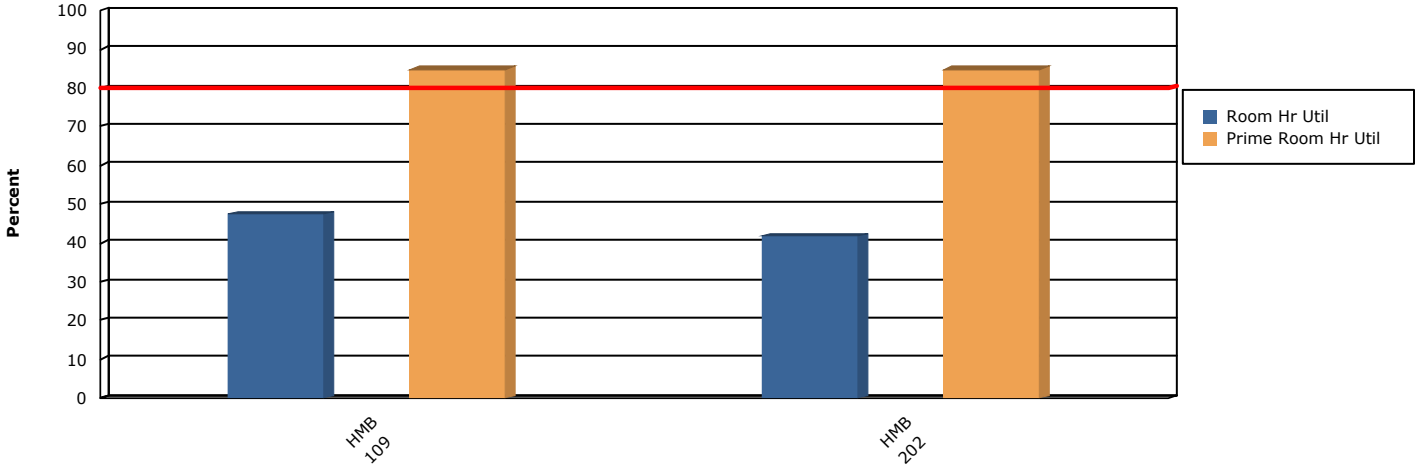
Average Weekly Utilization for Sections Only by Building and Room with Primetime

Term Weeks: 16.00 Hours in Standard Week: 70.00 Dates: 8/26/2024 - 12/6/2024

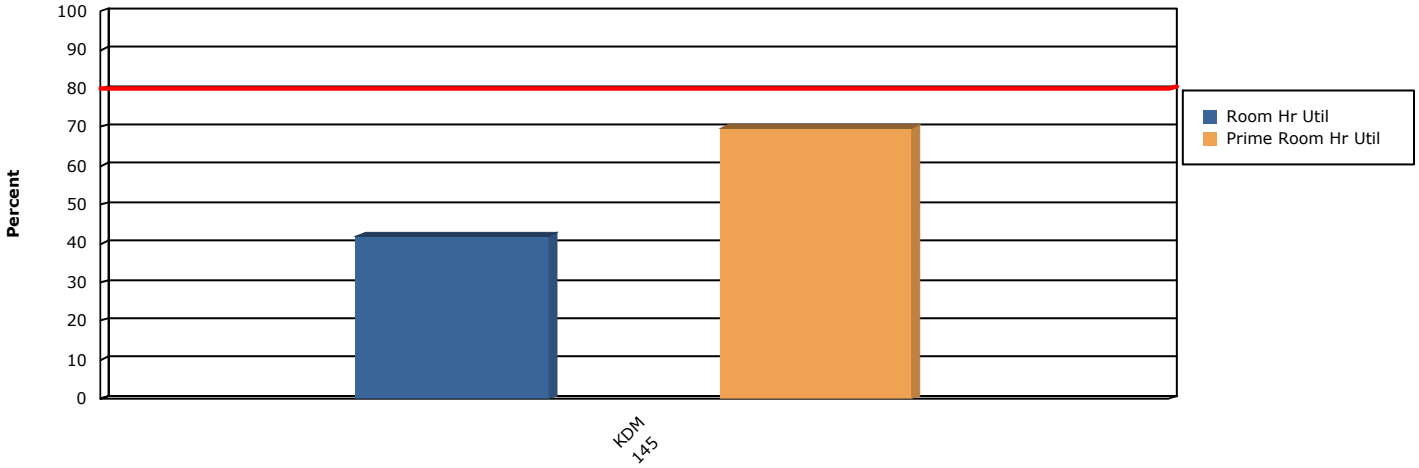
Standard Week: Monday, Tuesday, Wednesday, Thursday, Friday - 7:00 AM to 10:00 PM

Primetime: Monday, Tuesday, Wednesday, Thursday, Friday - 9:00 AM to 2:00 PM Hours in Primetime: 23.00

Building - Room	Roomtype	Room Hrs.	Room Hr. Util.	Prime Room Hrs.	Prime Room Hr. Util	Prime Ratio
HMB	2 room(s)	62.56	44.69%	39.03	84.85%	62.39%



KDM						
145	Lecture	29.44	42.05%	16.06	69.84%	54.56%
KDM	1 room(s)	29.44	42.05%	16.06	69.84%	54.56%



LIB						
126	Lecture	12.75	18.21%	7.50	32.61%	58.82%
127	Lecture	8.09	11.56%	3.66	15.90%	45.17%
128	Lecture	23.31	33.30%	14.22	61.82%	60.99%
3021	Lecture	33.56	47.95%	13.88	60.33%	41.34%
65	Lecture	29.50	42.14%	17.38	75.54%	58.90%

Space Utilization

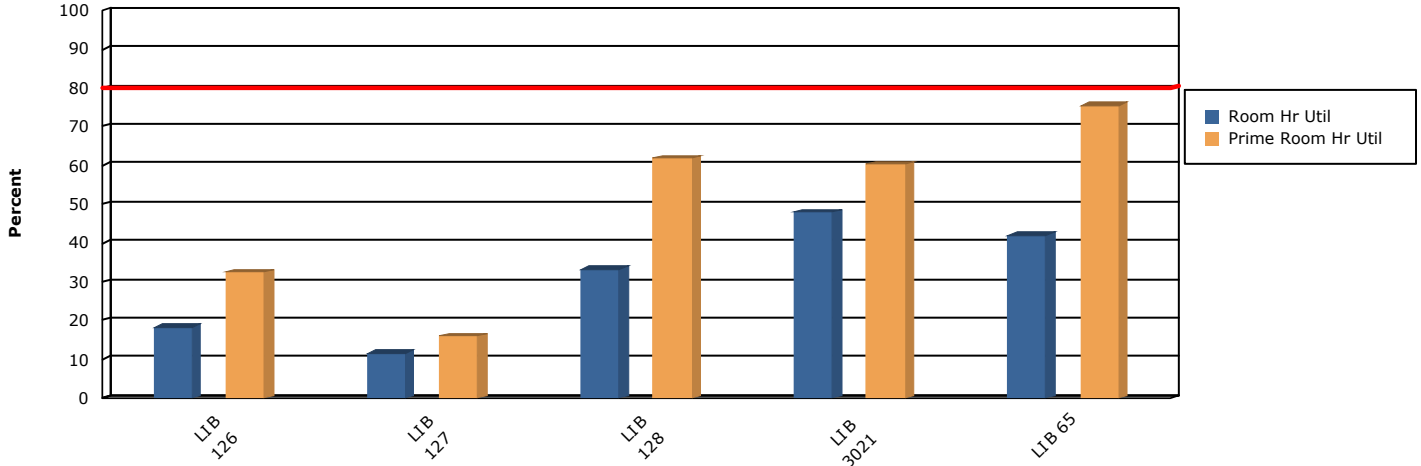
Average Weekly Utilization for Sections Only by Building and Room with Primetime

Term Weeks: 16.00 Hours in Standard Week: 70.00 Dates: 8/26/2024 - 12/6/2024

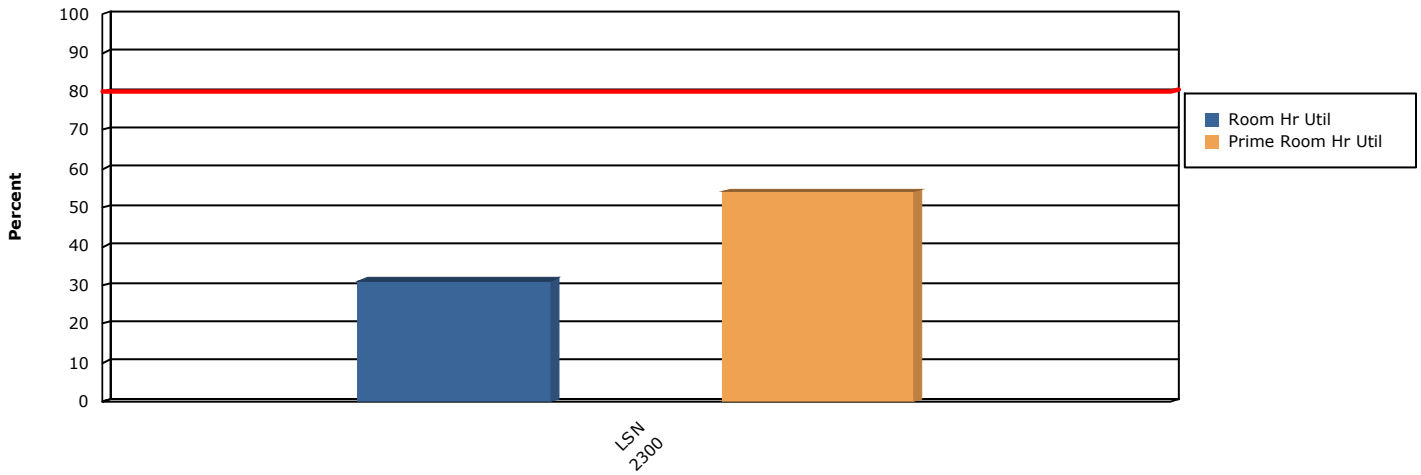
Standard Week: Monday, Tuesday, Wednesday, Thursday, Friday - 7:00 AM to 10:00 PM

Primetime: Monday, Tuesday, Wednesday, Thursday, Friday - 9:00 AM to 2:00 PM Hours in Primetime: 23.00

Building - Room	Roomtype	Room Hrs.	Room Hr. Util.	Prime Room Hrs.	Prime Room Hr. Util	Prime Ratio
LIB	5 room(s)	107.22	30.63%	56.63	49.24%	52.81%



LSN						
2300	Lecture	21.78	31.12%	12.47	54.21%	57.25%
LSN	1 room(s)	21.78	31.12%	12.47	54.21%	57.25%



MND						
1003	Lecture	32.69	46.70%	16.94	73.64%	51.82%
1005	Lecture	33.91	48.44%	18.69	81.25%	55.12%
1015	Lecture	38.03	54.33%	17.78	77.31%	46.75%
1020	Lecture	32.97	47.10%	16.94	73.64%	51.37%
1022	Lecture	43.19	61.70%	15.53	67.53%	35.96%
1024	Lecture	33.28	47.54%	13.88	60.33%	41.69%
1026	Lecture	43.53	62.19%	18.69	81.25%	42.93%
1028	Lecture	35.91	51.29%	14.53	63.18%	40.47%
1030	Lecture	30.91	44.15%	14.31	62.23%	46.31%

Space Utilization

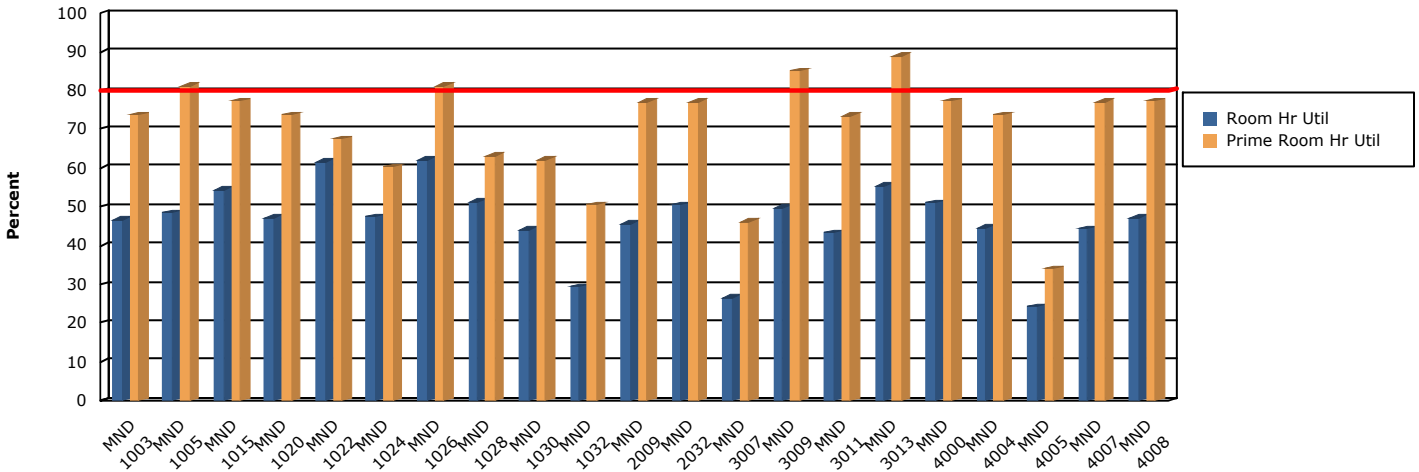
Average Weekly Utilization for Sections Only by Building and Room with Primetype

Term Weeks: 16.00 **Hours in Standard Week:** 70.00 **Dates:** 8/26/2024 - 12/6/2024

Standard Week: Monday, Tuesday, Wednesday, Thursday, Friday - 7:00 AM to 10:00 PM

Primetype: Monday, Tuesday, Wednesday, Thursday, Friday - 9:00 AM to 2:00 PM **Hours in Primetype:** 23.00

Building - Room	Roomtype	Room Hrs.	Room Hr. Util.	Prime Room Hrs.	Prime Room Hr. Util	Prime Ratio
1032	Lecture	20.59	29.42%	11.59	50.41%	56.30%
2009	Lecture	31.97	45.67%	17.72	77.04%	55.43%
2032	Lecture	35.41	50.58%	17.75	77.17%	50.13%
3007	Lecture	18.66	26.65%	10.63	46.20%	56.95%
3009	Lecture	34.84	49.78%	19.56	85.05%	56.14%
3011	Lecture	30.31	43.30%	16.91	73.51%	55.77%
3013	Lecture	38.72	55.31%	20.44	88.86%	52.78%
4000	Lecture	35.66	50.94%	17.81	77.45%	49.96%
4004	Lecture	31.28	44.69%	16.94	73.64%	54.15%
4005	Lecture	16.94	24.20%	7.81	33.97%	46.13%
4007	Lecture	30.97	44.24%	17.75	77.17%	57.32%
4008	Lecture	33.03	47.19%	17.81	77.45%	53.93%
MND	21 room(s)	682.78	46.45%	340.00	70.39%	49.80%



MRP	Roomtype	Room Hrs.	Room Hr. Util.	Prime Room Hrs.	Prime Room Hr. Util	Prime Ratio
1000	Lecture	34.78	49.69%	19.56	85.05%	56.24%
1001	Lecture	29.56	42.23%	14.69	63.86%	49.68%
1002	Lecture	33.00	47.14%	15.13	65.76%	45.83%
1010	Lecture	22.41	32.01%	14.66	63.72%	65.41%
1012	Lecture	29.59	42.28%	16.00	69.57%	54.07%
1014	Lecture	20.50	29.29%	11.56	50.27%	56.40%
1016	Lecture	33.09	47.28%	13.41	58.29%	40.51%
2030	Lecture	36.47	52.10%	17.31	75.27%	47.47%

Space Utilization

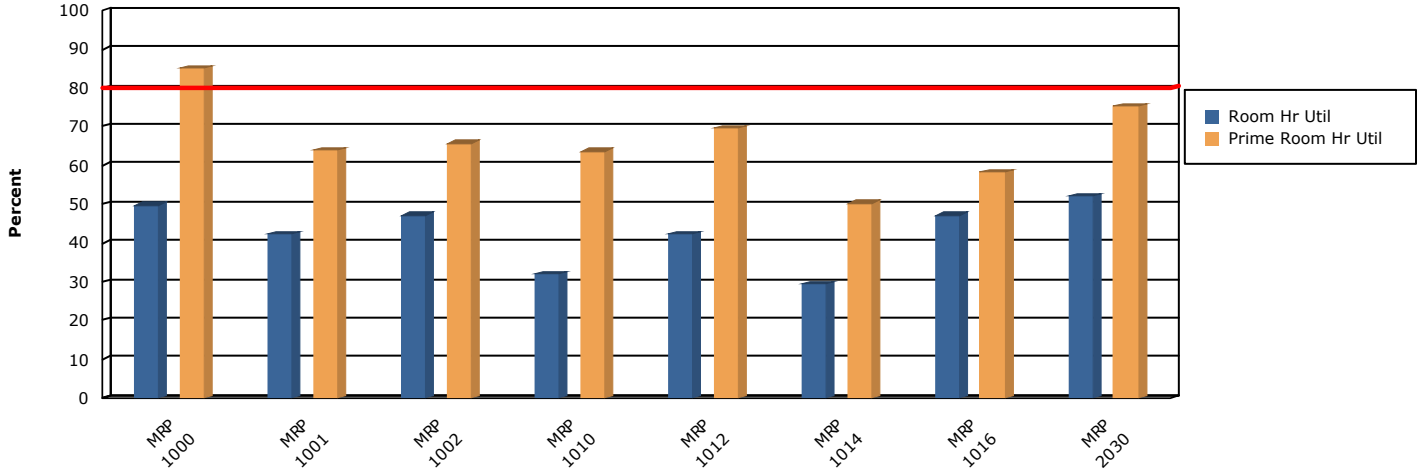
Average Weekly Utilization for Sections Only by Building and Room with Primetime

Term Weeks: 16.00 Hours in Standard Week: 70.00 Dates: 8/26/2024 - 12/6/2024

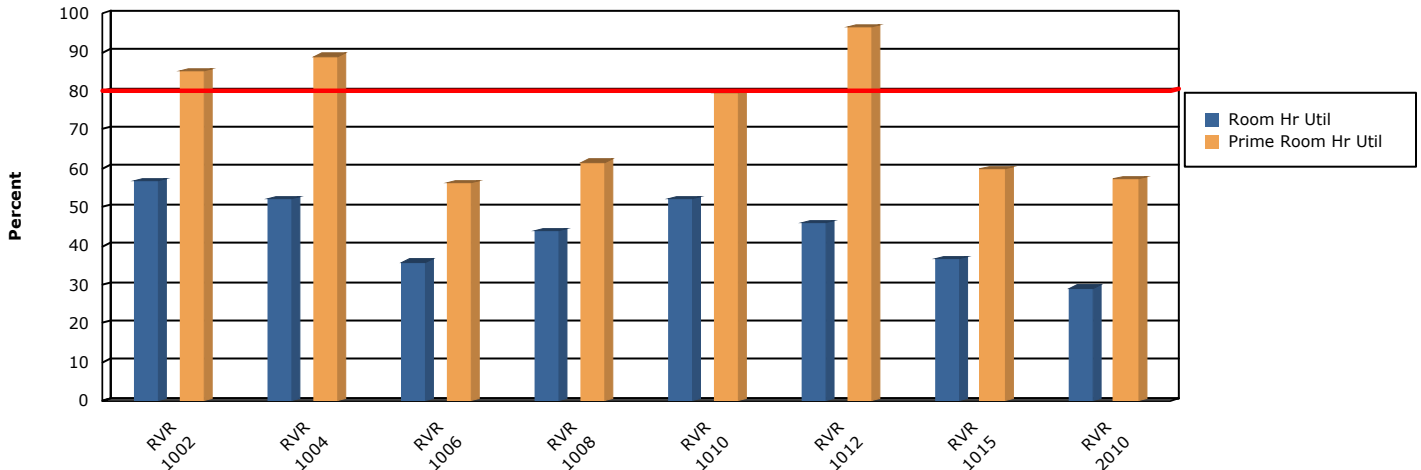
Standard Week: Monday, Tuesday, Wednesday, Thursday, Friday - 7:00 AM to 10:00 PM

Primetime: Monday, Tuesday, Wednesday, Thursday, Friday - 9:00 AM to 2:00 PM Hours in Primetime: 23.00

Building - Room	Roomtype	Room Hrs.	Room Hr. Util.	Prime Room Hrs.	Prime Room Hr. Util	Prime Ratio
MRP	8 room(s)	239.41	42.75%	122.31	66.47%	51.09%



RVR	8 room(s)	246.53	44.02%	134.50	73.10%	54.56%
1002	Lecture	39.78	56.83%	19.56	85.05%	49.18%
1004	Lecture	36.38	51.96%	20.44	88.86%	56.19%
1006	Lecture	25.06	35.80%	12.91	56.11%	51.50%
1008	Lecture	30.66	43.79%	14.19	61.68%	46.28%
1010	Lecture	36.50	52.14%	18.25	79.35%	50.00%
1012	Lecture	32.09	45.85%	22.19	96.47%	69.13%
1015	Lecture	25.72	36.74%	13.78	59.92%	53.58%
2010	Lecture	20.34	29.06%	13.19	57.34%	64.82%



SHS	2 room(s)	64.88	50.84%	33.38	96.47%	62.28%
143	Lecture	35.63	50.89%	22.19	96.47%	62.28%
145	Lecture	29.25	41.79%	22.19	96.47%	75.85%

Space Utilization

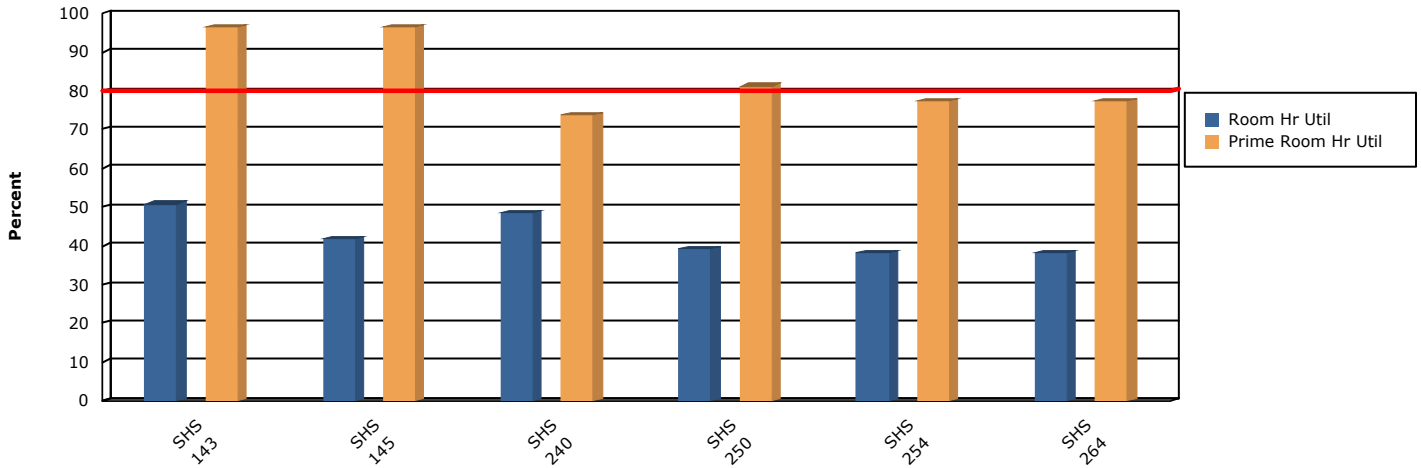
Average Weekly Utilization for Sections Only by Building and Room with Primetype

Term Weeks: 16.00 Hours in Standard Week: 70.00 Dates: 8/26/2024 - 12/6/2024

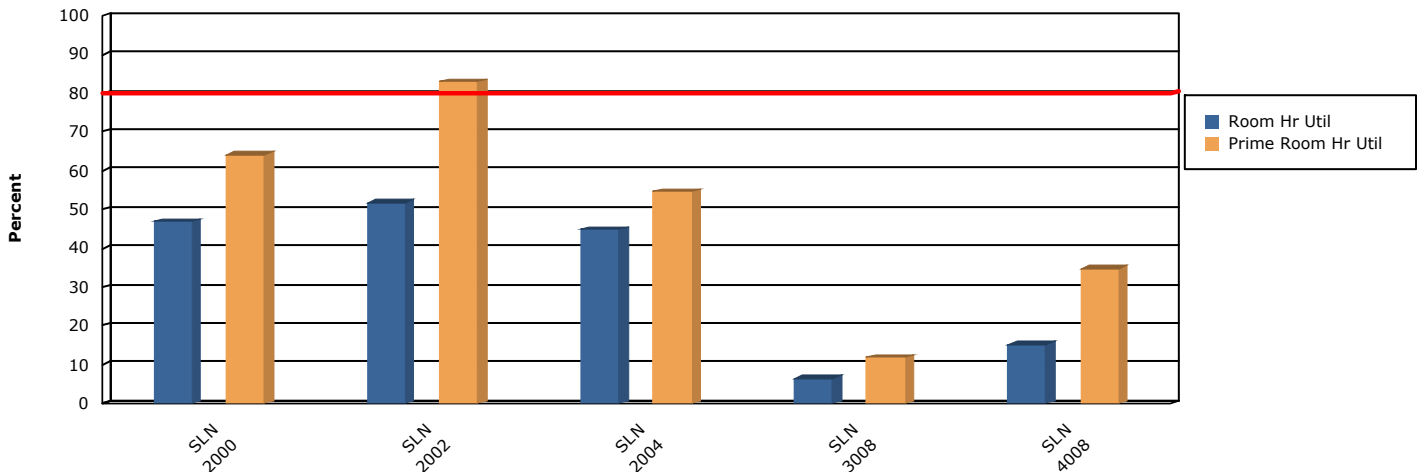
Standard Week: Monday, Tuesday, Wednesday, Thursday, Friday - 7:00 AM to 10:00 PM

Primetype: Monday, Tuesday, Wednesday, Thursday, Friday - 9:00 AM to 2:00 PM Hours in Primetype: 23.00

Building - Room	Roomtype	Room Hrs.	Room Hr. Util.	Prime Room Hrs.	Prime Room Hr. Util	Prime Ratio
240	Lecture	33.88	48.39%	16.94	73.64%	50.00%
250	Lecture	27.53	39.33%	18.66	81.11%	67.76%
254	Lecture	26.72	38.17%	17.81	77.45%	66.67%
264	Lecture	26.69	38.13%	17.81	77.45%	66.74%
SHS	6 room(s)	179.69	42.78%	115.59	83.76%	64.33%



SLN	Roomtype	Room Hrs.	Room Hr. Util.	Prime Room Hrs.	Prime Room Hr. Util	Prime Ratio
2000	Lecture	32.84	46.92%	14.75	64.13%	44.91%
2002	Lecture	36.34	51.92%	19.09	83.02%	52.54%
2004	Lecture	31.31	44.73%	12.56	54.62%	40.12%
3008	Lecture	4.47	6.38%	2.72	11.82%	60.84%
4008	Lecture	10.66	15.22%	8.03	34.92%	75.37%
SLN	5 room(s)	115.63	33.04%	57.16	49.70%	49.43%



SQU	Roomtype	Room Hrs.	Room Hr. Util.	Prime Room Hrs.	Prime Room Hr. Util	Prime Ratio
102	Lecture	16.75	23.93%	12.00	52.17%	71.64%

Space Utilization

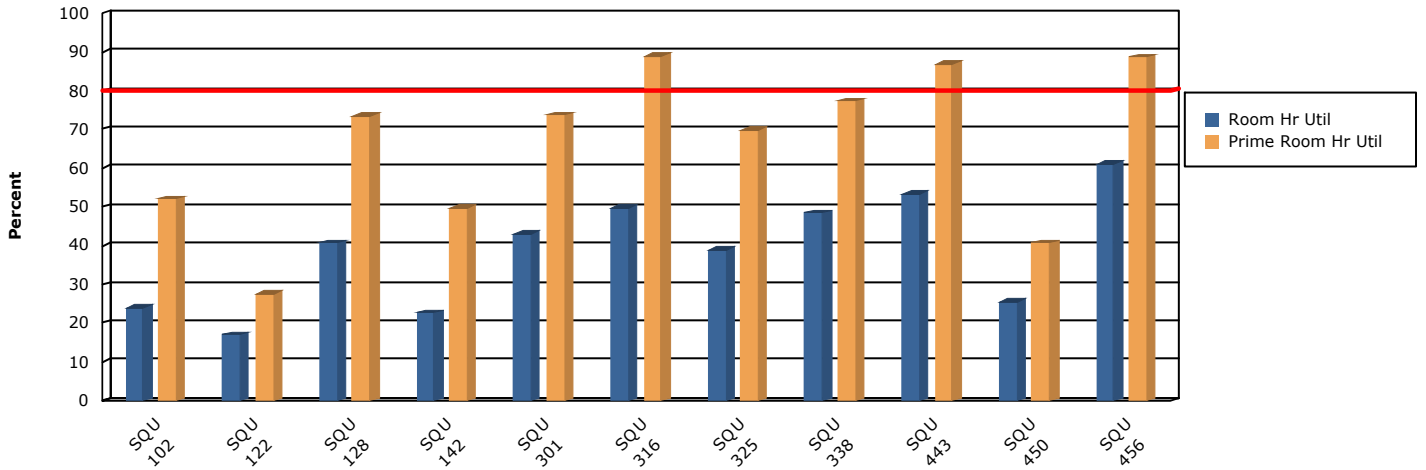
Average Weekly Utilization for Sections Only by Building and Room with Primetime

Term Weeks: 16.00 **Hours in Standard Week:** 70.00 **Dates:** 8/26/2024 - 12/6/2024

Standard Week: Monday, Tuesday, Wednesday, Thursday, Friday - 7:00 AM to 10:00 PM

Primetime: Monday, Tuesday, Wednesday, Thursday, Friday - 9:00 AM to 2:00 PM **Hours in Primetime:** 23.00

Building - Room	Roomtype	Room Hrs.	Room Hr. Util.	Prime Room Hrs.	Prime Room Hr. Util	Prime Ratio
122	Lecture	11.91	17.01%	6.38	27.72%	53.54%
128	Lecture	28.44	40.63%	16.91	73.51%	59.45%
142	Lecture	15.88	22.68%	11.44	49.73%	72.05%
301	Lecture	30.13	43.04%	16.94	73.64%	56.22%
316	Lecture	34.75	49.64%	20.44	88.86%	58.81%
325	Lecture	27.25	38.93%	16.06	69.84%	58.94%
338	Lecture	33.91	48.44%	17.81	77.45%	52.53%
443	Lecture	37.34	53.35%	20.00	86.96%	53.56%
450	Lecture	17.88	25.54%	9.34	40.63%	52.27%
456	Lecture	42.72	61.03%	20.41	88.72%	47.77%
SQU	11 room(s)	296.94	38.56%	167.72	66.29%	56.48%



TAH	Roomtype	Room Hrs.	Room Hr. Util.	Prime Room Hrs.	Prime Room Hr. Util	Prime Ratio
1002	Lecture	18.56	26.52%	9.75	42.39%	52.53%
1003	Lecture	36.28	51.83%	16.88	73.37%	46.51%
1004	Lecture	30.94	44.20%	12.56	54.62%	40.61%
1007	Lecture	22.53	32.19%	11.63	50.54%	51.60%
1025	Lecture	42.66	60.94%	20.44	88.86%	47.91%
1026	Lecture	48.97	69.96%	18.69	81.25%	38.16%
1027	Lecture	26.91	38.44%	12.56	54.62%	46.69%

Space Utilization

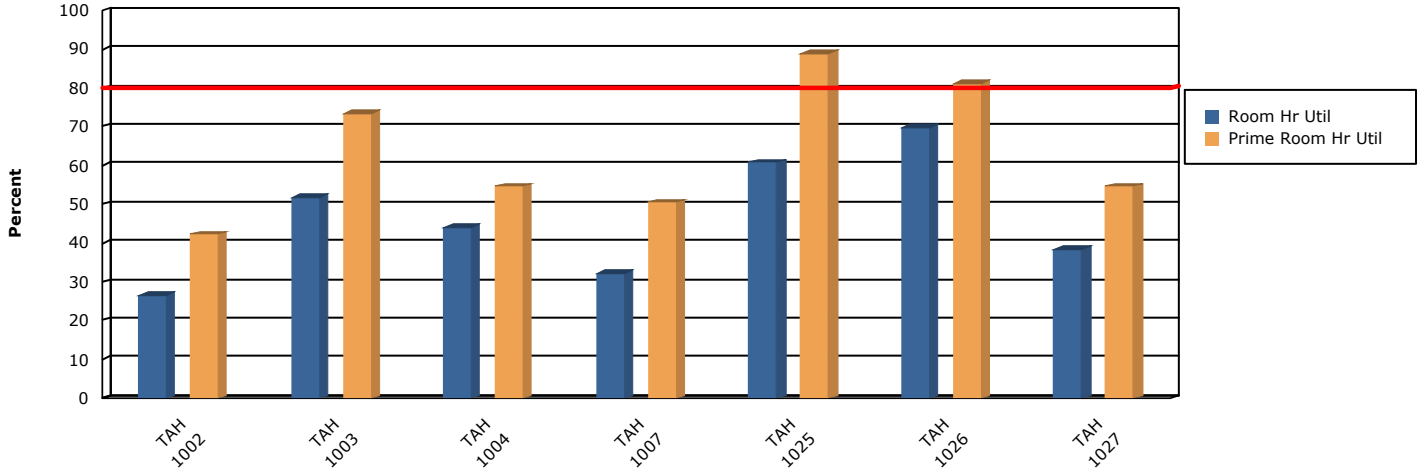
Average Weekly Utilization for Sections Only by Building and Room with Primetime

Term Weeks: 16.00 Hours in Standard Week: 70.00 Dates: 8/26/2024 - 12/6/2024

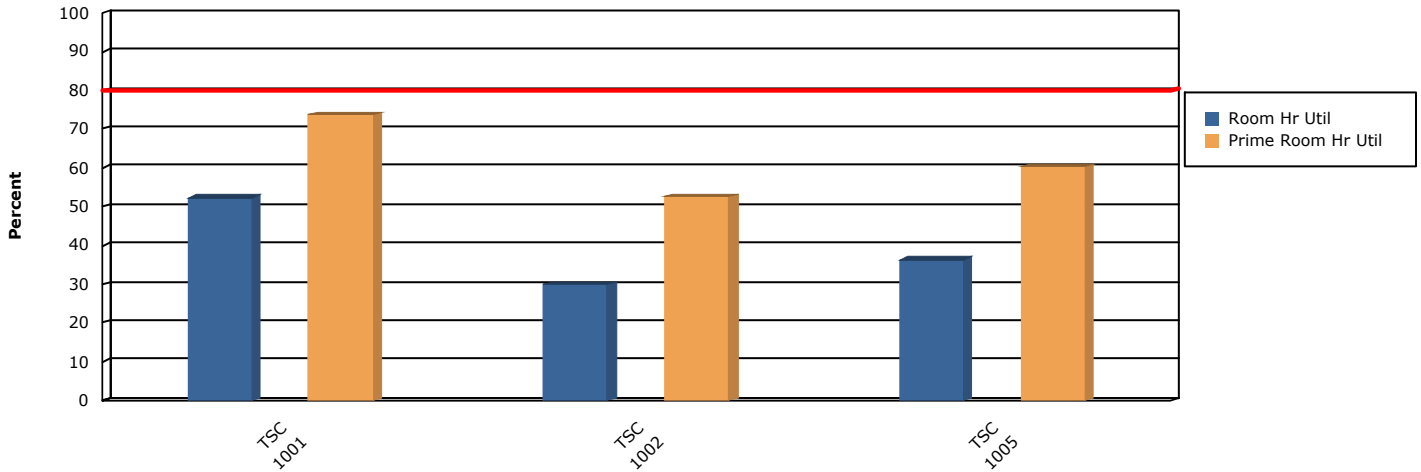
Standard Week: Monday, Tuesday, Wednesday, Thursday, Friday - 7:00 AM to 10:00 PM

Primetime: Monday, Tuesday, Wednesday, Thursday, Friday - 9:00 AM to 2:00 PM Hours in Primetime: 23.00

Building - Room	Roomtype	Room Hrs.	Room Hr. Util.	Prime Room Hrs.	Prime Room Hr. Util	Prime Ratio
TAH	7 room(s)	226.84	46.29%	102.50	63.66%	45.19%



TSC						
1001	Lecture	36.66	52.37%	16.94	73.64%	46.21%
1002	Lecture	20.91	29.87%	12.09	52.58%	57.85%
1005	Lecture	25.50	36.43%	13.88	60.33%	54.41%
TSC	3 room(s)	83.06	39.55%	42.91	62.18%	51.66%



YSM						
117	Lecture	26.75	38.21%	13.44	58.42%	50.23%
119	Lecture	31.13	44.46%	12.53	54.48%	40.26%
127	Lecture	29.34	41.92%	14.28	62.09%	48.67%
133	Lecture	25.78	36.83%	9.84	42.80%	38.18%
135	Lecture	26.03	37.19%	15.97	69.43%	61.34%
141	Lecture	20.13	28.75%	11.00	47.83%	54.66%

Space Utilization

10/31/2024

Average Weekly Utilization for Sections Only by Building and Room with Primetime

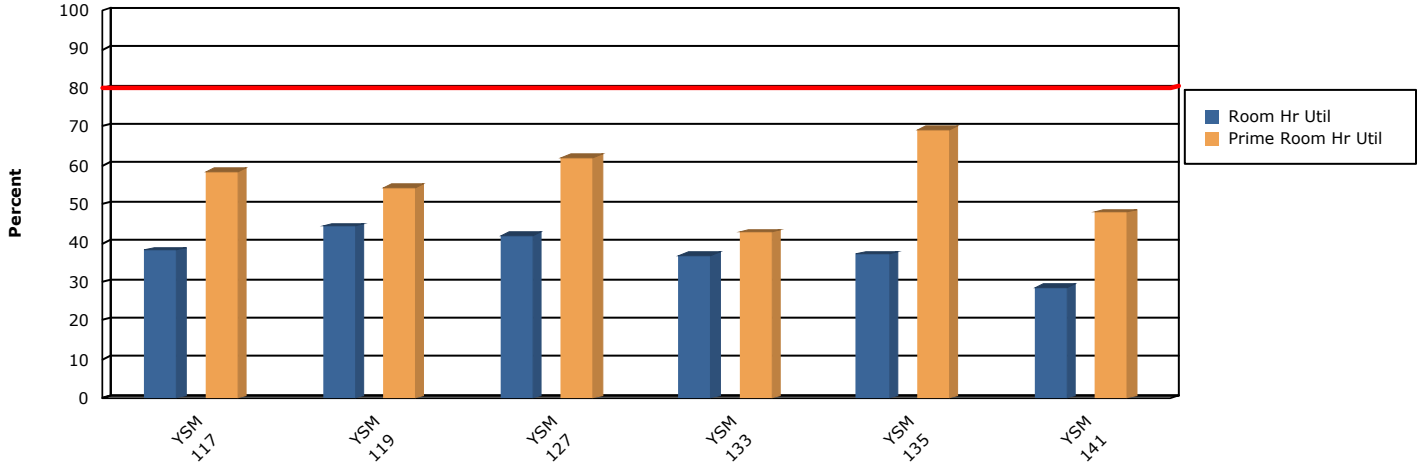
12:34 pm

Term Weeks: 16.00 Hours in Standard Week: 70.00 Dates: 8/26/2024 - 12/6/2024

Standard Week: Monday, Tuesday, Wednesday, Thursday, Friday - 7:00 AM to 10:00 PM

Primetime: Monday, Tuesday, Wednesday, Thursday, Friday - 9:00 AM to 2:00 PM Hours in Primetime: 23.00

Building - Room	Roomtype	Room Hrs.	Room Hr. Util.	Prime Room Hrs.	Prime Room Hr. Util	Prime Ratio
YSM	6 room(s)	159.16	37.89%	77.06	55.84%	48.42%



Campus Total:	189 room(s)	5,673.23	42.88%	2,947.81	67.81%	51.96%
----------------------	--------------------	-----------------	---------------	-----------------	---------------	---------------

Space Utilization

Average Weekly Utilization for Sections Only by Building and Room with Primetime

10/31/2024

12:34 pm

Term Weeks: 16.00 **Hours in Standard Week:** 70.00 **Dates:** 8/26/2024 - 12/6/2024

Standard Week: Monday, Tuesday, Wednesday, Thursday, Friday - 7:00 AM to 10:00 PM

Primetime: Monday, Tuesday, Wednesday, Thursday, Friday - 9:00 AM to 2:00 PM **Hours in Primetime:** 23.00

Building - Room	Roomtype	Room Hrs.	Room Hr. Util.	Prime Room Hrs.	Prime Room Hr. Util	Prime Ratio
-----------------	----------	-----------	----------------	-----------------	---------------------	-------------

Space Utilization by Building and Room With Primetime Report Key

Purpose of Report

The Space Utilization Sections Only by Building and Room report shows average weekly room hours of academic sections only by building, highlighting room hour utilization and station fill (students in seats). Space utilization calculations are based on the user specified number of hours in a standard scheduling week. Additional parameters allow a user to specify a "prime time" subset of hours where classes are often compacted (for example, M - R, 10:00a to 2:00p). This report can then be used to compare overall space utilization compared to utilization during primetime. This report can be used to measure how efficiently different buildings and rooms are scheduled in terms of hours per week and how evenly class offerings are spread throughout the entire week as opposed to being compacted during primetime. Hours used by double books and crosslists are counted only once. Enrollments and max enrollments for double books and crosslists are added together.

A utilization percentage of 80% or higher in any room during primetime is considered to be a "bottleneck" and may prevent future proportional growth in that room. The 80% utilization line is highlighted in red on each graph to assist in showing if any room bottlenecks exist.

Definition of User Defined Parameters

Days in Standard Week - The report will only bring in room hours that occur on these selected days.

Standard Week Start and End Time - The report will only bring in room hours that occur between these start and end times.

Enter Hours in Standard Week - This parameter allows a user to enter the number of hours in the standard class week. For example, if the standard week to offer classes is 8:00a to 5:00p, Monday through Friday, the standard week would be 45 hours. This number is then used in the Room Hour Utilization calculation (Room Hours / Standard Week).

Select Start and End Date - Allows a user to filter activities within a date range. The report will bring in records from all section meetings that occur between the start and end date.

Length of Term (in Weeks) - The report will calculate utilization based on all activities between the start and end date selected. To calculate average weekly utilization, total hours are divided by the number of weeks specified. This allows a user to account for Term dates including exam week, holiday weeks, etc.

Primetime Days - Days of the week to include in the primetime calculation (Monday, Tuesday, Wednesday, Thursday for example).

Primetime Start - Hour of the day to start calculating primetime hours.

Primetime End - Hour of the day when primetime is done.

Prime Week - Weekly hours in primetime (for example, a M - R, 10a to 3p primetime would be a 20 hour prime week).

Select Roomtype(s) - Only hours used in rooms of the selected type(s) will be included in the report.

Definition of Report Fields

Building-Room - Lists the Building and Room code of each room used on the selected campus.

Room Hours - Average number of weekly hours scheduled in that room during the selected term. All section activities are added up by room. Room hours used by double booked and crosslisted classes are only counted once. A class that meets from 8:00a to 9:00a on MWF for the entire specified term would get counted for three hours per week for the entire term (if it met for 16 weeks, it would account for 48 total hours, and then be divided by the Length of Term parameter (48 / 16 = 3 average weekly room hours)). If that same class met for only half of the specified term (8 weeks), it would only get counted for one and half hours of usage (24 / 16 = 1.5 average weekly room hours). Class hours are rounded up to the next half hour (a class meeting from 8:00a to 9:45a would get counted as 2.00 hours).

Room Hour Utilization - Percentage of the standard weekly hours used by that room. The standard weekly hours are entered as a user defined parameter when the report is run. (Room Hours / Standard Week)

Prime Room Hours - Average weekly hours occurring in the user specified primetime. If primetime is M - R, 10a - 3p, a class that meets on MW from 9a to 11a would get counted for four total room hours, but only TWO prime room hours.

Prime Room Hour Utilization- Percentage of the prime room hours used in that room / building. The prime week hours are entered as a user defined parameter when the report is run. (Prime Room Hours / (#of Rooms in room / building*Prime Week))

Prime Ratio- Ratio of prime room hours offered in that room / building compared to total room hours offered. If a room / building is in use for 100 hours in a week and 75 of those hours are during primetime, the Prime Ratio would be 75%.