

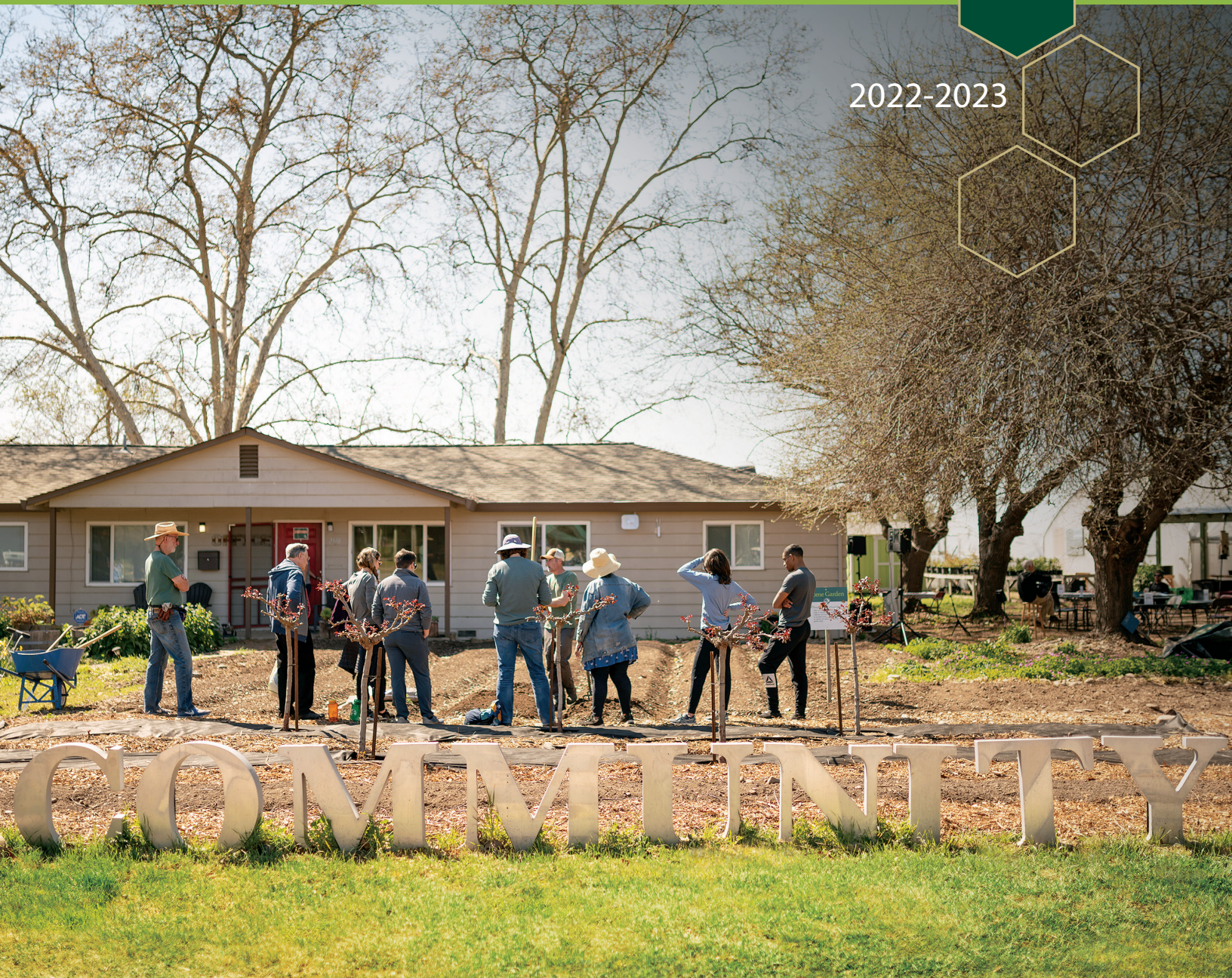


SACRAMENTO  
STATE

# Anchor University Collaborative Research Fellowships



2022-2023







# The Anchor University Collaborative Research Fellowship


**T**he 22/23 Collaborative Research Fellowships were made possible by the Anchor University Advisory Council along with the College of Social Sciences and Interdisciplinary Studies. The fellowship program supports collaborations between Sacramento State and community partners to conduct applied research benefiting the Sacramento Region. The fellowships include technical support and fielding of survey questions with the Sacramento Regional Survey Panel. Community Fellows use the research findings to inform their work in the region. Sacramento State Fellows may use the research for their own academic projects and/or to support student learning. After 18 months, the full data set resulting from the 22/23 research fellowships will be archived in the Sacramento State library for faculty and students to use on a permanent basis.

**Research about the Region.** Four collaborative teams developed survey questions to inform the following research projects about the Sacramento Region:

- Changing the Public Narrative on Affordable Housing
- Advancing the Sacramento Region Hispanic Community's Well-Being
- Perceptions and Values Related to Guaranteed Income Programs
- Food Localization: The Impact on Sacramento Consumers and Our Communities

Several questions regarding Sacramento State's role in the community were also included. The survey questions were fielded online from February to March 2023 and a total of 2,276 panel participants were invited to take the survey. Some individuals also responded to the survey using a paper format (152). A total of 1,465 panelists completed the survey resulting in a 64.4% response rate. Using a 95% confidence interval, the final survey results have a 2.6% margin of error.

Details about the Anchor University Collaborative Research projects, teams, and key findings are detailed on the following pages.

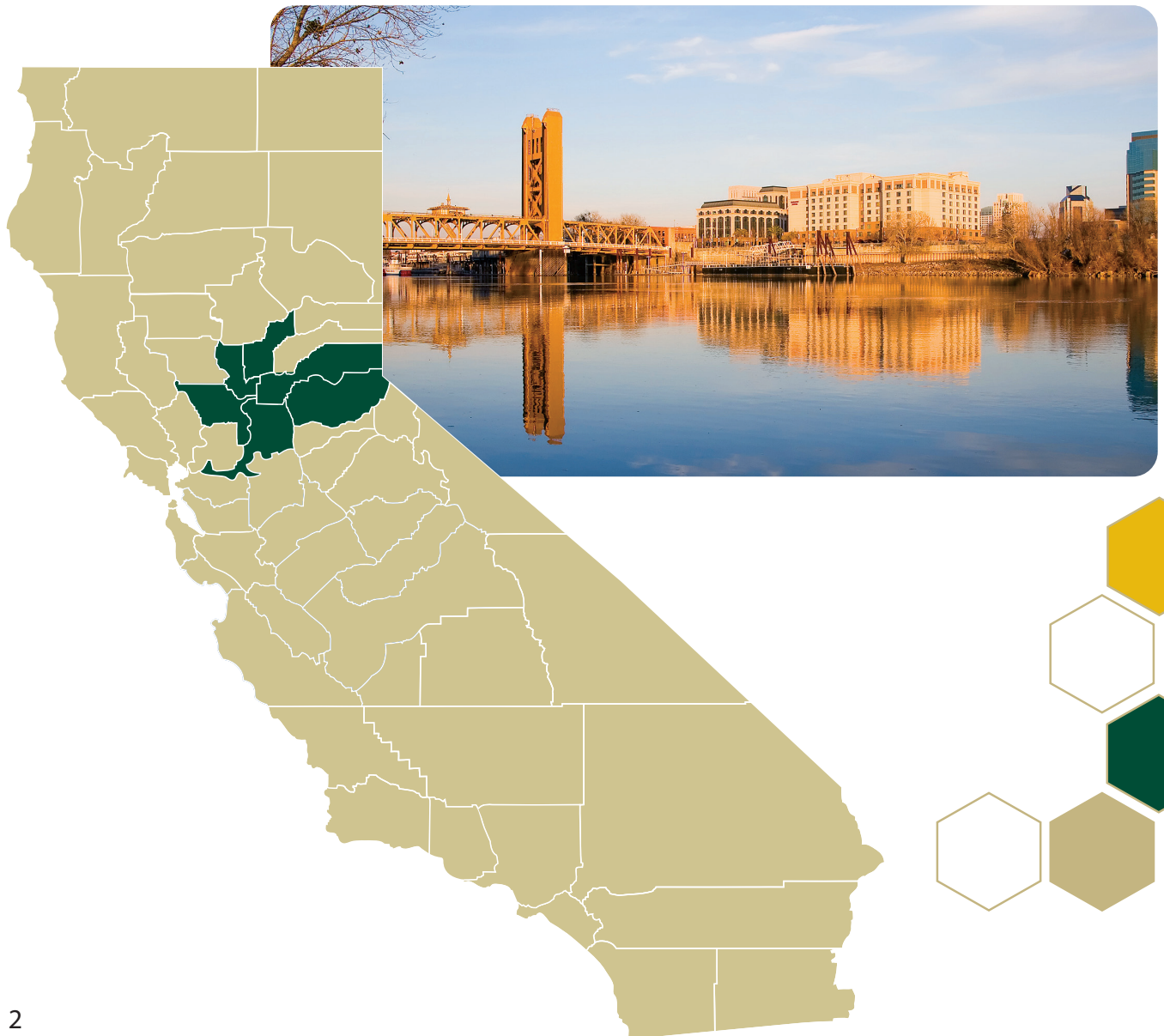


The fellowship program supports collaborations between Sacramento State and community partners to conduct applied research benefiting the Sacramento Region.

# The Sacramento Regional Panel

**The Sacramento Regional Survey Panel** was established in 2017, as ongoing research collaboration between the Institute for Social Research at Sacramento State and Valley Vision, a civic leadership organization. Survey data informs policymakers and stakeholders on important key regional issues by providing a representative measure of public opinion

and experiences. The almost 3,000 person survey panel is made up of randomly selected households from Sacramento, Yolo, El Dorado, Placer, Sutter, and Yuba counties. The strength of the panel is its probability-based sampling which allows for research on public opinions and experiences that reflect demographics of the region.



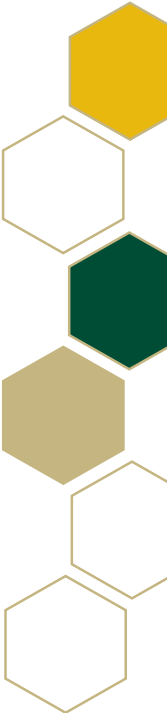
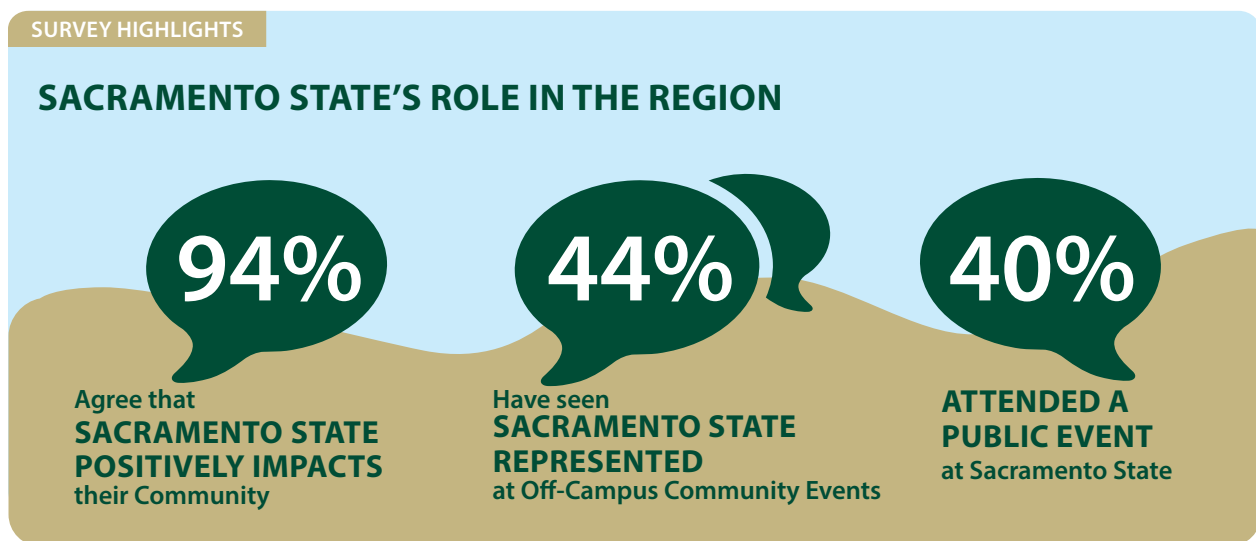


# Sacramento State: The Region's Anchor University

In his 2018 Fall Address, Sacramento State President Robert S. Nelsen outlined a vision to deepen and strengthen the University's engagement with the community by transforming the campus into an Anchor University. As an Anchor University, Sacramento State has a vested interest in the well-being of the Sacramento Region and strives to support and improve the quality of life in the community in which we serve. As a place-based institution, the University aims to bring the full weight of its intellectual and economic readiness to support the growth and flourishing of the city and region -- most especially, to address those neighborhoods and communities that have historically been underrepresented and underserved. The term anchor refers to the fact that an institution, public and/or private, uses its deep roots in a community to develop relationships that are reciprocal and mutually beneficial, which will lead to long-term collaborations and partnerships that respond to community needs and challenges.

Anchor institutions are vital assets to their cities and are expected to do more in their communities as active civic participants towards improving the health and well-being of their communities. Anchor institutions offer direct economic benefits to their communities through local procurement and the employment required for everyday operations. Likewise, universities also represent an unlimited range of possibilities for collaborating with stakeholders outside of their campuses in order to leverage their knowledge, training, and expertise in ways that directly and indirectly support local residents.

As the Region's anchor university, Sacramento State is strategically embracing and supporting our interdependent role in the community as significant drivers for economic and cultural growth, innovation, and revitalization. Sacramento State aligns its resources and efforts to cultivate purposeful, long-term and mutually beneficial partnerships across the region to confront systemic inequities, transform the lives of our students, and strengthen our communities.



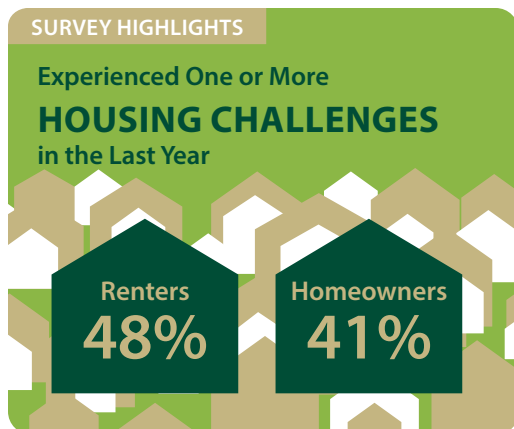
# Sacramento Housing Alliance & Division of Social Work

## Changing the Public Narrative on Affordable Housing



The goal of this collaboration is to gain key insights into public opinion related to housing, affordable housing, homelessness and related substantive solutions that can be achieved through voter action on policy and funding. Survey questions feature important issues relevant to two potential campaigns for housing issues appearing before voters on the November 2024 ballot. The first is a significant affordable housing funding measure in the City of Sacramento to invest in brick-and-mortar projects with a focus on anti-displacement and homelessness prevention. The second is a statewide repeal of an antiquated state law (Article 34) that will improve the deployment of affordable housing development investments. With the lack of affordable housing and homelessness becoming larger problems in the region, this collaborative research aims to gain insight into:

- how people view these problems;
- what interventions may work; and
- the appropriate roles for government, the private sector, and civil organizations.



This research will be critical to an informed and participatory electorate for the upcoming policy proposals. The local community stands to benefit from engagement with community institutions such as Sacramento State, Sacramento Housing Alliance, and its coalition partners to design the public narrative on affordable housing and what it will take to get there. The Sacramento Region is ready to find solutions for housing and homelessness. This research collaboration will be the gateway to solutions small and large for the short-term and long-term. It is also a foundation for an ongoing working partnership through which Sacramento State students can go further, deeply analyzing some of the key insights revealed from the survey research.

### Research Fellows

**Kendra Lewis** | SHA

[executivedir@sachousingalliance.org](mailto:executivedir@sachousingalliance.org)

**Prof. Arturo Baiocchi** | School of Social Work

[arturo.baiocchi@csus.edu](mailto:arturo.baiocchi@csus.edu)

**Prof. Ethan Evans** | School of Social Work

[ethan.evans@csus.edu](mailto:ethan.evans@csus.edu)



# Sacramento Hispanic Chamber of Commerce & College of Social Sciences and Interdisciplinary Studies

## Advancing the Sacramento Region Hispanic Community's Well-Being

The goal of this collaboration is to learn and publicize how the well-being of the Hispanic community compares to that of other ethnic groups in the Greater Sacramento Region. Through this research, the health needs of the local Hispanic community and ways to address these challenges will be identified. The research team has been collaborating since Fall 2022 and has plans for future collaborations. The research team is currently discussing ways they can continue supporting future iterations of SACHCC's "Hispanic Economic Report." They also plan to participate in SACHCC's signature event, "State of Hispanics" and their conversations regarding future collaborations are ongoing.

These research findings will be used to improve community understanding of the unique experiences of Hispanic/Latinx people in the greater Sacramento Region, as well as support the community's future well-being and prosperity. Findings will be integrated into a future SACHCC "State of Hispanics" report which will be broadly disseminated to the Greater

Sacramento Region. The findings will help better understand the unique healthcare needs of the Hispanic community. This information can be used by policymakers and healthcare practitioners to better serve the needs of the Hispanic community. Findings from the survey will also be an important tool for teaching and research at Sacramento State. Students and the academic community will benefit from this research collaboration.

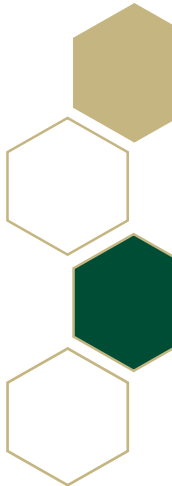
### Research Fellows

**Juan Novello** | Sacramento Hispanic Chamber of Commerce | [juan@sachcc.org](mailto:juan@sachcc.org)

**Cathy Rodriguez** | Sacramento Hispanic Chamber of Commerce | [cathy@sachcc.org](mailto:cathy@sachcc.org)

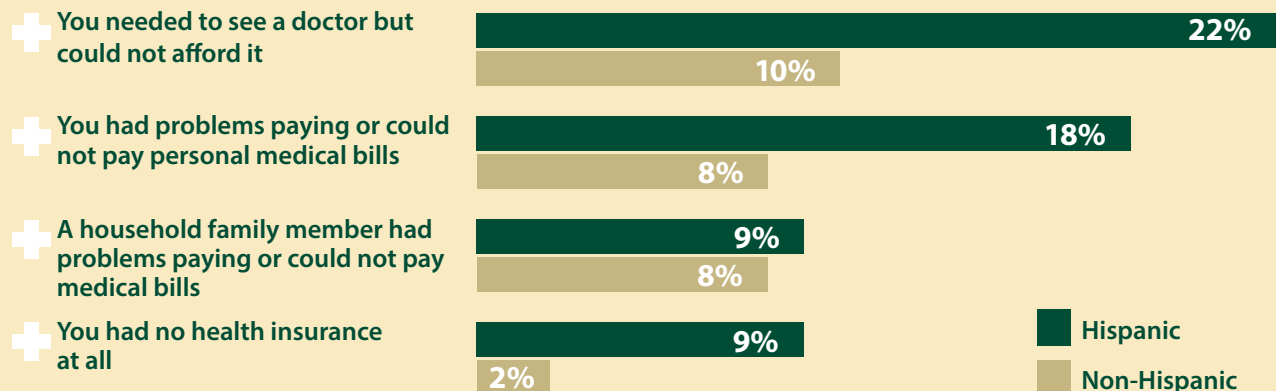
**Prof. Elvia Ramirez** | Ethnic Studies  
[eramirez@csus.edu](mailto:eramirez@csus.edu)

**Prof. Heidi Sarabia** | Sociology  
[heidy.sarabia@csus.edu](mailto:heidy.sarabia@csus.edu)



### SURVEY HIGHLIGHTS

#### DURING THE PAST 12 MONTHS, was there any time when....



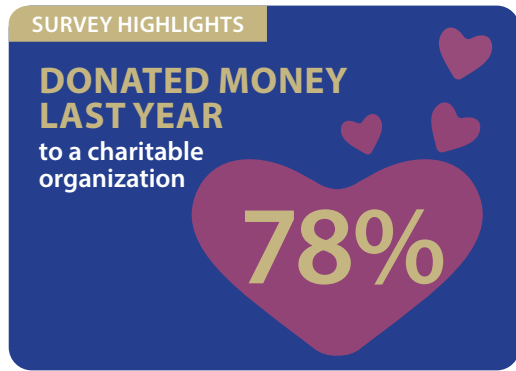


# United Way California Capitol Region & Center for Health Practice, Policy & Research

## Perceptions and Values Related to Guaranteed Income Programs

This research collaboration began in Fall 2021 and is aimed at designing an evaluation of the UWCCR initiative, Guaranteed Income Program. With funding from the City and County of Sacramento, this initiative has distributed monthly, no-strings attached payments of \$500 for 12 months to select participants. The research collaboration seeks to understand community views, experiences with (e.g., financial struggles) and beliefs about (e.g., views on poverty) guaranteed income projects. In addition, the research aims to understand the service needs throughout the region and the familiarity with UWCCR.

The research will identify community sentiment toward guaranteed income pilots and general attitudes and values related to social welfare and efforts to mitigate inequality. Findings will be used to guide work in the region to address social inequities, help to shape community programs, target resources toward the most vulnerable community members, and improve



the well-being of the greater Sacramento population.

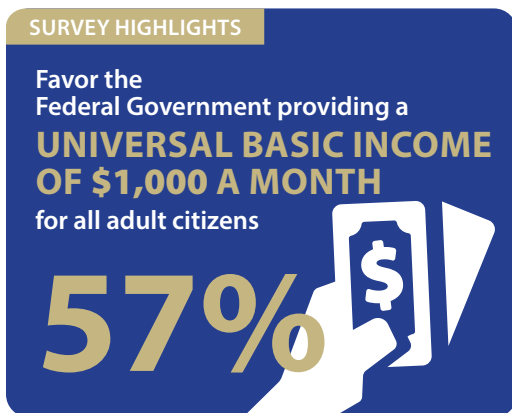
### Research Fellows

**Michael Howell** | UWCCR | michael.howell@uwccr.org

**Genevieve Levy** | UWCCR | genevieve.levy@uwccr.org

**Prof. Ethan Evans** | School of Social Work  
ethan.evans@csus.edu

**Prof. Arturo Baiocchi** | School of Social Work  
arturo.baiocchi@csus.edu





# California Grocers Association & Nutrition, Food & Dietetics Program

## Food Localization: The Impact on Sacramento Consumers and Our Communities

The aim of this collaboration is to gain insights into consumer preferences for purchasing local food/products in the grocery store, as well as any potential barriers that may prevent them from doing so. The research team has been partnering together since 2020. As part of this partnership, the Nutrition, Food & Dietetics Program developed a Grocery Management Certificate Program which is one of only two partnerships offered in California. Our certificate program will build a pipeline for students' preparedness to find employment at the management/executive level in the Grocery industry. The Nutrition, Food & Dietetics Program will continue our relationship with the CGA that is very supportive of students as their future leaders and offer scholarships and support for attending their annual conference.

This research will be instrumental in helping local grocers better connect to their communities by supporting and offering locally grown products. Our findings intend to provide insights related to what products Sacramento consumers want to see in their stores and factors that will influence them to purchase locally grown/produced products. This research will be helpful to community members that want to buy more local goods, to local farmers that hope to increase the sale of their products, and for grocery stores looking to build stronger relationships with their customers and local farms.



### Research Fellows

**Ron Fong** | CA Grocers Association

**Prof. Kelly Thompson** | Nutrition, Food & Dietetics  
kelly.thompson@csus.edu

**Prof. Seunghee Wie** | Nutrition, Food & Dietetics  
wie@csus.edu



# Sacramento State Community Collaborations

## Community Partner | Valley Vision

Since 2017, the Institute for Social Research has collaborated with Valley Vision to build and support the Sacramento Regional Survey Panel. Valley Vision is a civic leadership organization with a mission to “bring communities together to tackle our region’s biggest challenges and ensure a more livable future.” To date, ISR and Valley Vision have collaborated together on ten public-opinion polls which have informed policymakers and stakeholders on key regional issues by providing on-the ground public engagement data. Read more about these polls at [www.valleyvision.org](http://www.valleyvision.org).



## Institute for Social Research

The Institute for Social Research at Sacramento State has a 30-year history of collaborating with community partners. The mission of the Institute is to be a public resource to the greater Sacramento region, by serving as the applied research and program evaluation partner to state and local agencies, and community-based organizations. As a multi-disciplinary research institute, we work with our partners to customize studies that address their most pressing research questions and information needs. Our research is people-centered, recognizing our partners’ expertise and insights about the work they do. Where possible, we work towards integrating and involving the focus of our research — individuals with lived experience — into the study design, data collection, and interpretation of findings.

The Institute employs 18 professional staff, as well as student research assistants year-round and is located at Sacramento State Downtown. ISR also has extensive experience in deploying methodologies for representative surveys, conducting community needs assessment, program evaluation and policy impact studies. Read more about our current and past research projects at [www.csus.edu/isr](http://www.csus.edu/isr).







