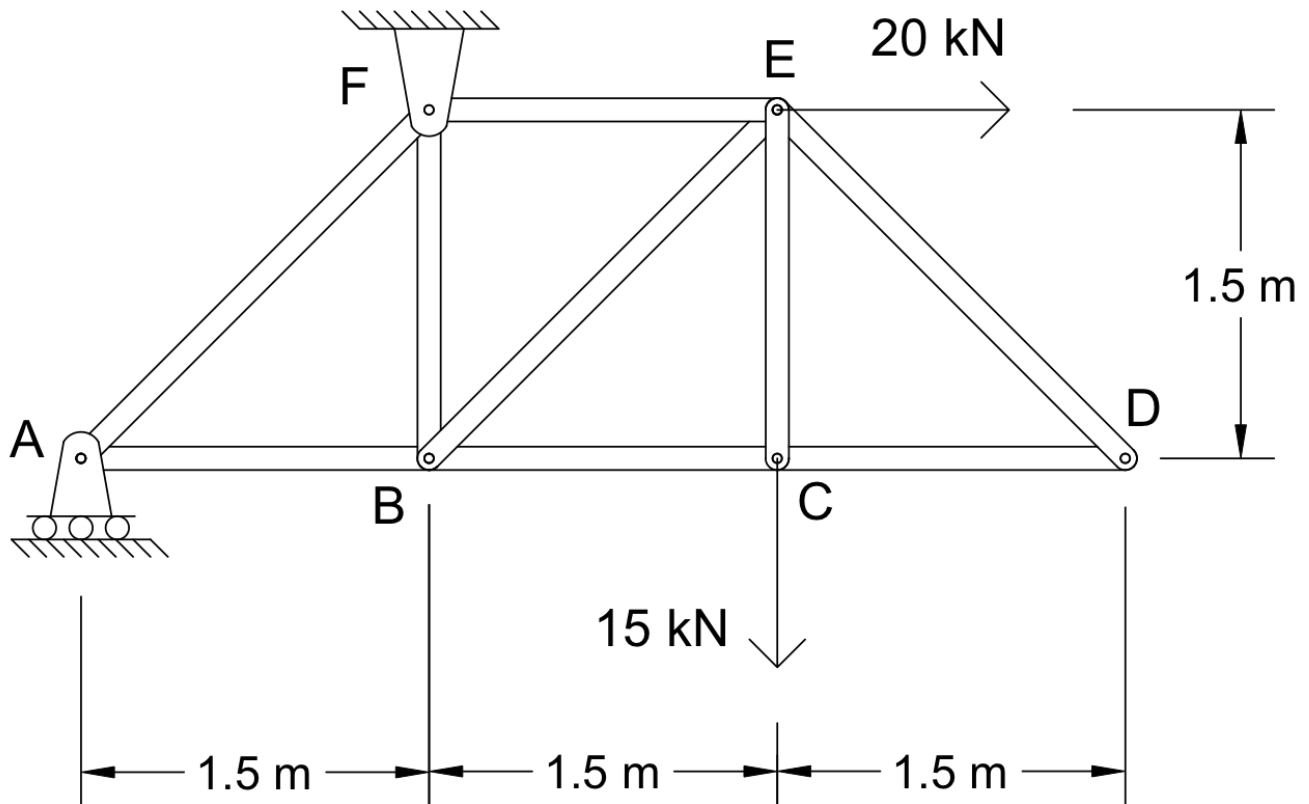
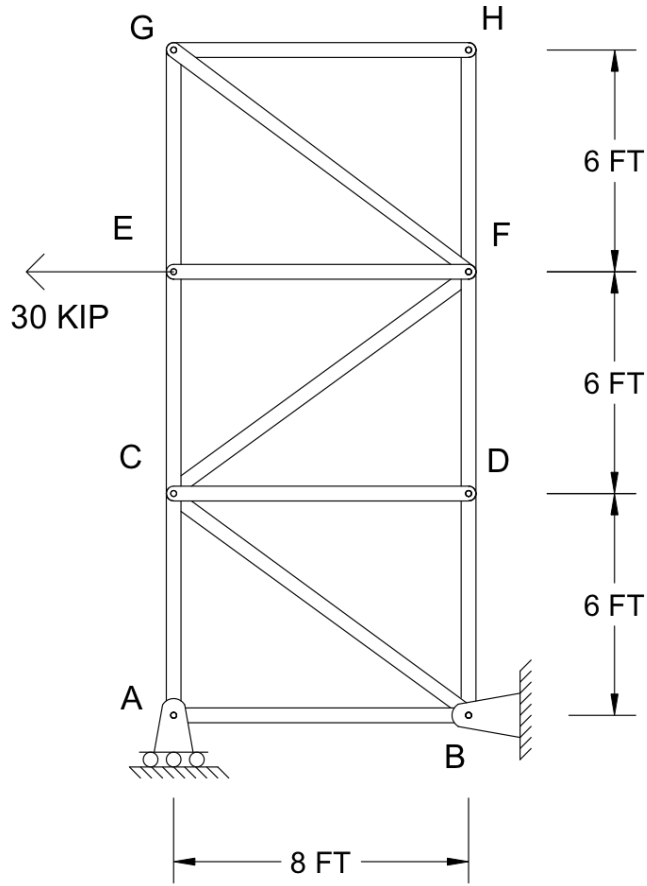


1. In your own words, define a truss. Name one typical application where trusses are used.
2. List the assumptions that are made to analyze and design the members and connections of a truss. In your own words, explain each assumption. Do you think these are good assumptions to make? Why or why not?
3. For each figure below,
 - a. Draw a complete FBD of the global structure
 - b. Determine the support reactions. Be sure to specify magnitude and direction.
 - c. Identify any zero-force members by inspection.
 - d. Using the method of joints, determine the force in each member of the truss. Draw a FBD of each joint you consider. Be sure to indicate whether the member is in tension or compression.

i.



ii.



iii.

