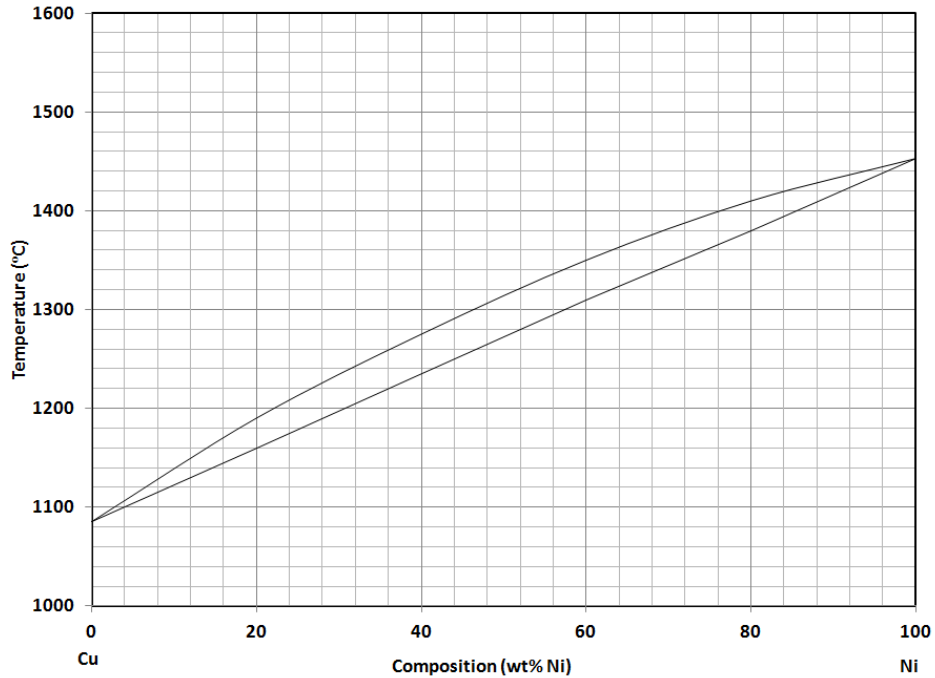
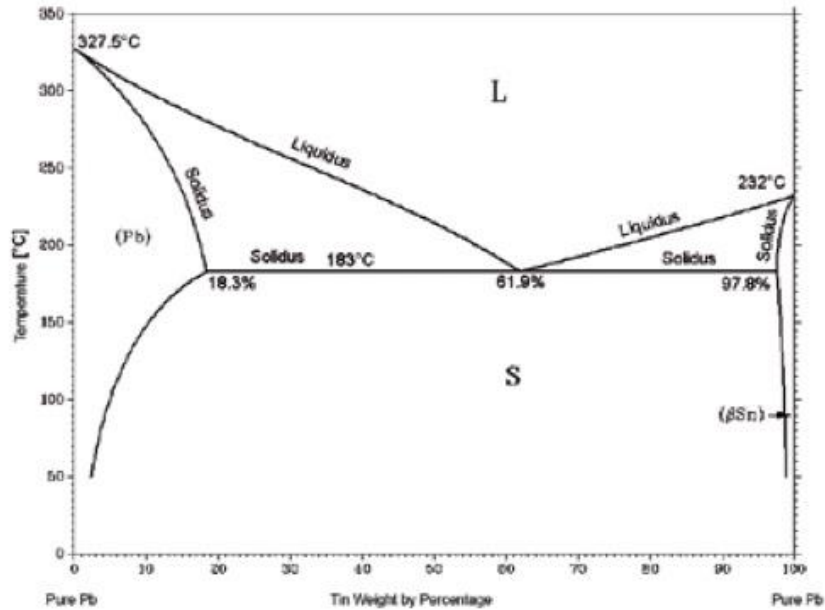


- Use the phase diagram for Cu-Ni. Draw a tie line at 1260 °C and 40 wt % Ni. Determine the relative proportions of each phase at this temperature and composition.



- Determine the phase compositions, phase amounts, and microconstituent amounts of an alloy of 30 wt% Sn and 70 wt% Pb at 182°C.



Phase Diagram for Tin-Lead (Sn-Pb)