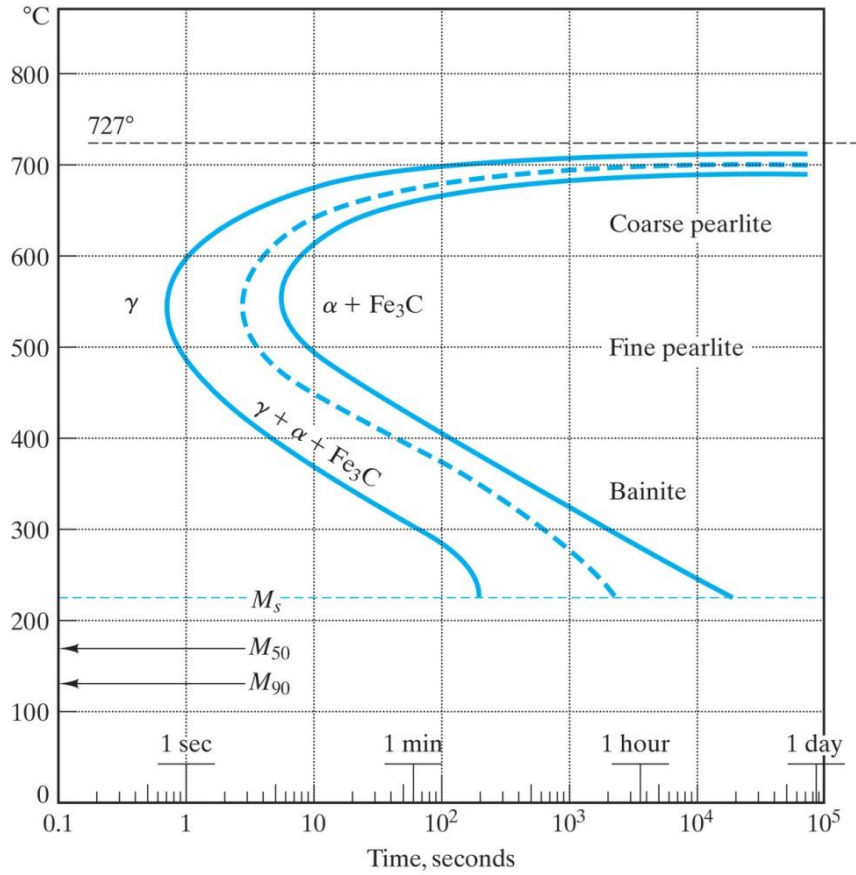


1. Find the structures occurring at each step in a) and b) using the TTT diagram for a eutectic steel.



a) Starting at 800 °C, i) quench to 600 °C, hold for 4 seconds, ii) quench to 275 °C, hold for 1000 seconds, iii) quench to room temperature, iv) heat to 500 °C for 1 hour, then cool to room temperature.

i)

ii)

iii)

iv)

b) Starting at 775 °C, i) quench to 640 °C, hold for 10 seconds, ii) quench to 375 °C, hold for 100 seconds iii) quench to room temperature, iv) heat to 350 °C for 2 hours.

i)

ii)

iii)

iv)