

Welcome CSAD Juniors!

Please take a seat. While we all gather, please work with the people around you on the following activity.

Group Activity: Introduce yourself to your group (students and faculty who are near you) and share why are you interested in this major.





SACRAMENTO
STATE

Welcome to Communication Sciences and Disorders

Fall 2024

CSAD BS Program Junior Year Advising

Faculty Introductions



SACRAMENTO STATE
Redefine the Possible

CSAD Mission & Vision

Our Mission

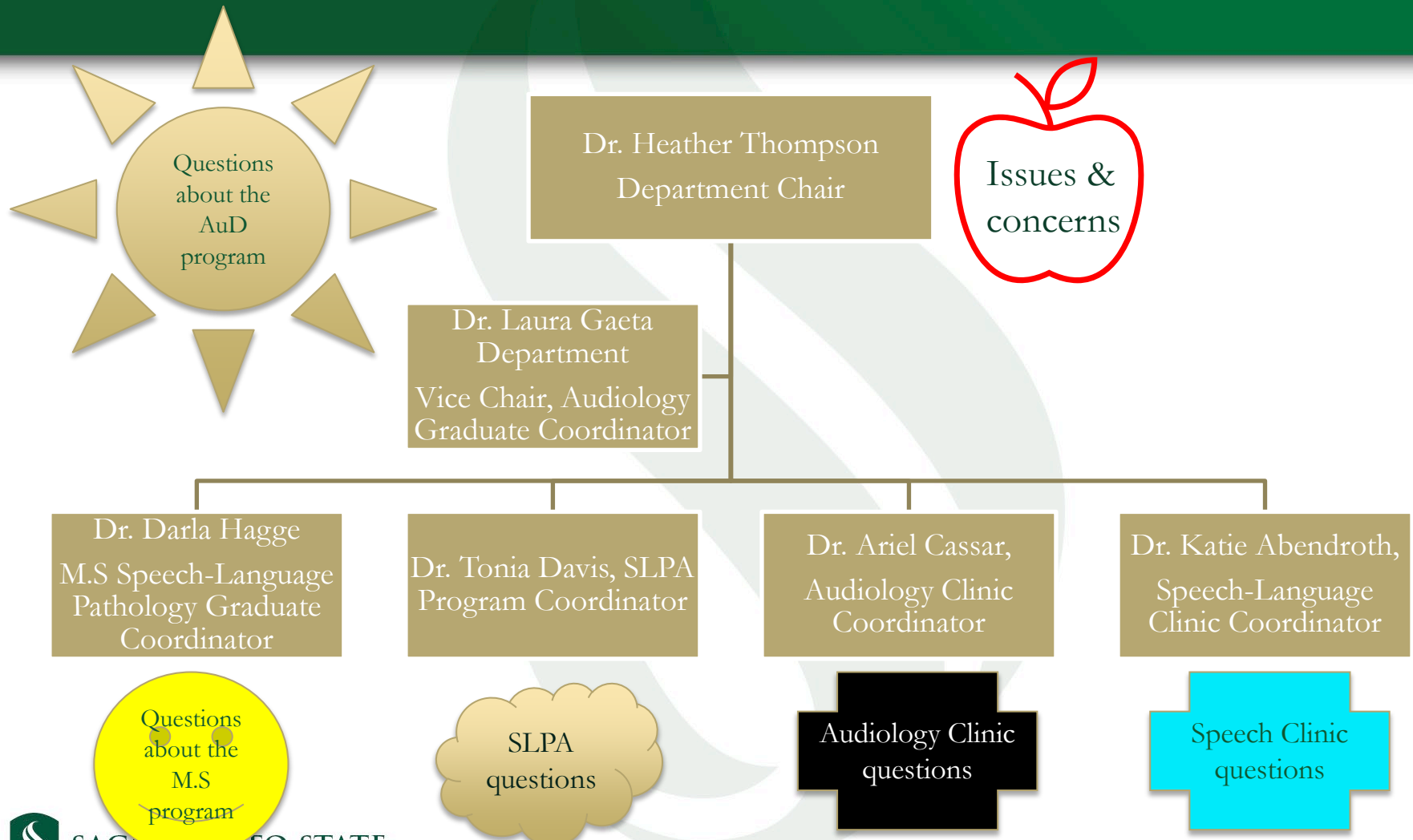
The Department of Communication Sciences and Disorders prepares future professionals in the fields of audiology and speech-language pathology by providing a rigorous scientific and clinical foundation for practice to meet the needs of California and beyond.

Our Vision

To create a welcoming, caring, supportive, diverse, and inclusive environment for education, research, and community service in the professions of audiology and speech-language pathology.



Who to contact?





SACRAMENTO
STATE



Advising



SACRAMENTO STATE
Redefine the Possible

CSAD Advising Resources

Website:

CSAD advising presentations and other advising resources can be found on the [Bachelor of Science in Communication Sciences and Disorders webpage](#) posted on the [department website](#)

Catalog:

The [online catalog](#) can be a great resource for program information including course descriptions, prerequisite requirements, and course sequence.



General Education Advising

Academic Advising Center

Lassen Hall, Room 1013

Phone: (916) 278-1000 Option #5
advising@csus.edu

College of Health and Human Services

Student Success Center

Solano Hall, Room 3000

Phone: (916) 278-7643
[chhs success center@csus.edu](mailto:chhs_success_center@csus.edu)



CSAD Major Advising: Group Advising

- The Department conducts group advising and major orientation for students interested in changing their major, who would like to know more about our programs, or who just want a refresher on general major advising.
- Sessions are held throughout the academic semester on a drop-in basis (in person, zoom, or hybrid)
- No appointment is necessary.
- Upcoming session information can be found on the calendar posted on the [department website](#)



CSAD Major Advising: One-on-One Appointments*

One-on-One Advising Appointments may be scheduled with:

- **Undergraduate advising** Available full-time faculty members - Visit the [Meet Us](#) section of the department website for a list of faculty advisors and contact information.
- **MS-SLP Program Advising** - Dr. Darla Hagge, Graduate Coordinator
- **Audiology Advising** - Dr. Laura Gaeta, Au.D. Program Director
- **Speech & Language Clinic Advising** - Dr. Katie Abendroth, Clinical Education Coordinator
- **Audiology Clinic Advising** - Dr. Ariel Cassar, Clinical Education Coordinator
- **SLPA Fieldwork Extension Coursework Advising** - Dr. Heather Thompson, CSAD Department Chair



Group Activity:

In a few minutes, we will be having a panel with a Speech-Language Pathologist and an Audiologist.

Think about and share questions you would like to ask our panelists!

Degrees offered through the Department of Communication Sciences and Disorders

- Bachelor of Science in Communication Sciences and Disorders
- Second Bachelor of Science in Communication Sciences and Disorders (College of Continuing Education)

For more information on the following programs, please visit the department website and attend a program specific information session.

- Speech-Language Pathology Assistant (SLPA)
- Master of Science in Communication Sciences and Disorders
- Doctorate of Audiology (Au.D.)



CSAD B.S. Course Sequence

The order of courses makes sense.

Courses in one semester are prerequisites for courses in subsequent semesters.

Major coursework begins in the fall semester, typically in the junior year.



Year 1 (“Junior” Level) Major Course Sequence

Semester 1, Fall (10 units)

<u>Units</u>	<u>Class</u>	<u>Description</u>
4	CSAD 110	Physics of Sound and Phonetics. (Fall only)
3	CSAD 111	Anatomy and Physiology of the Speech Mechanism (Fall only)
3	CSAD 112	Language Science and Development (Fall only)

You should be spending about **TEN 10** hours of lecture/class time + **THIRTY 30** hours of studying outside of class time **PER WEEK** on these three courses.



Year 1 (“Junior” Level) Major Course Sequence

Semester 2, Spring (13 units)

<u>Units</u>	<u>Class</u>	<u>Description</u>
3	CSAD 125	Developmental and Acquired Neurogenic Language Disorders Across the Lifespan (Spring only)
3	CSAD 126	Speech Sound Development and Disorders in Children: Aspects of Articulation and Phonology (Spring only)
3	CSAD 130	Introduction to Audiology (Spring only)
1	CSAD 145	Supervised Observations (Spring only)
3	CSAD 148	Research in Speech Language Pathology and Audiology (Spring only)



Year 2 (“Senior” Level) Major Coursework

Semester 3, Fall (11-14 units)

<u>Units</u>	<u>Class</u>	<u>Description</u>
3	CSAD 123	Voice and Fluency (Fall only)
2	CSAD 142	Topics in Autism Spectrum Disorders (Fall only)
1	CSAD 142L	(elective)
3	CSAD 147	Assessment Procedures (Fall only)
3	CSAD 146	Introduction to Clinical Issues and Methods * Elective (either Fall OR Spring)



Year 2 (“Senior” Level) Major Coursework

Semester 4, Spring (12 units)

<u>Units</u>	<u>Class</u>	<u>Description</u>
3	CSAD 133	Introduction to Aural Rehabilitation (Spring only)
3	CSAD 127	Introduction to Medical Speech Pathology (Spring only)
3	CSAD 143	Communication Disorders in Multicultural Populations (Spring only)
3	CSAD 146	Introduction to Clinical Issues and Methods * Elective (either Fall OR Spring)



*CSAD 146 Introduction to Clinical Issues and Methods

CSAD 146 Introduction to Clinical Issues and Methods is an **elective course** and is not required for the B.S. degree.

Required for students who plan to apply to Sacramento State Master's Degree Program in Speech-Language Pathology.

Recommended for students who plan to apply to graduate programs at other universities.

Optional for students who do not plan to attend graduate school.

Not required for students who wish to apply to the CSUS SLPA Summer Extension Coursework or the CSUS Doctorate of Audiology program.

Prior to enrolling in CSAD 146, students must fulfill the following requirements:

- **3.2 GPA within the major (CSAD)**
- **NO CSAD courses below a grade of "C"**
- Must meet medical requirements including vaccinations, Basic Life Saving & CPR for healthcare providers, and proof of health insurance
- Completion of a department approved **Level 1 criminal background screening**



How to succeed: Pre-professional Behaviors

- Attend class
- Arrive early
- Plan to communicate with and get to know your classmates.
- Plan to communicate with and get to know your faculty. Each interaction is an opportunity to develop your reputation.
- Be organized and plan to complete assignments a day early so you have time for revisions.
- Have a good attitude. Be excited to be here. Have positivity that you are here.
- Have an openness and willingness to learn from individuals who may be very different from you and may have different perspectives.
- Have positive intent when receiving corrective feedback.
- Check your CSUS email daily. Only use CSUS emails for communication with faculty and staff.
- Emails are a better form of contact than phone calls.



Retaking Coursework

- You can retake a class for grade replacement for C- or lower classes.
- Cost of a 3-unit class w/ 15-units: \$801.80
- Tuition + fees for a 3-unit class: \$2,731.00
- Retaking a class: **\$3,352.80**
- *We don't want you to have to retake classes!*



Year 1 (“Junior” Level) Major Course Sequence

40 hours of
class & studying
per week!

Semester 1, Fall (10 units)

<u>Units</u>	<u>Class</u>	<u>Description</u>
4	CSAD 110	Physics of Sound and Phonetics. (Fall only)
3	CSAD 111	Anatomy and Physiology of the Speech Mechanism (Fall only)
3	CSAD 112	Language Science and Development (Fall only)

You should be spending about **TEN 10** hours of lecture/class time + **THIRTY 30** hours of studying outside of class time **PER WEEK** on these three courses.



How to Succeed: Professional Behavior

Professional Behavior Starts Now!

Emotional Intelligence

Competence

Honesty

Compassion

Respect for others

Professional Responsibility





SACRAMENTO STATE
Redefine the Possible

Self-Awareness - #1

- Being in tune with your own behavioral patterns and motives.
- Comprehending how your feelings and actions influence others and can articulate your emotions and the reasons behind them.



Self-
awareness



Self-Regulation - #2

- Having emotional responses that align with the situation at hand.
- Demonstrating the ability to keep impulses in check
- Exhibiting skills to diffuse tension, navigate conflicts, and handle challenging circumstances.




Self-
regulation



Intrinsic Motivation - #3

- Passionate about personal growth.
- Strong drive to excel, as defined by your own criteria for success.
- A desire for personal development rather than by obtaining external rewards like wealth, fame, prestige, or acknowledgment.



Intrinsic
Motivation



Empathy - #4

- Understand others' perspectives without being self-absorbed.
- Can grasp another person's viewpoint.
- Being patient in their judgment of others, having positive intent and understanding that everyone is trying their best given their circumstances.



Empathy



Social Skills - #5

- Individuals with well-developed social skills excel in team environments.
- Considerate of others' needs during conversations or conflict resolution.
- Display open and inviting behavior, use active listening, display strong verbal communication skills, and keep welcoming body language.
- Skilled at building relationships and demonstrating leadership when needed.



Group Activity

Discuss with the faculty and students
near you:

Describe an example of when you
showed high emotional intelligence and
share with your group.



Guest Speakers

Kylinn Merriman, CCC-SLP
Speech-Language Pathologist
Sacramento City Unified School District

Dr. Jithin Balan, PhD
Audiologist
CSU Sacramento



Reporting & Feedback

CSUS Bias Reporting Tool (BRT)

If you have been subject to, or are an observer of, an incident of bias that negatively impacted your sense of belonging, please complete and submit a bias incident report.

https://cm.maxient.com/reportingform.php?CSUSacramento&layout_id=6

Department of Communication Sciences and Disorders **Student Feedback form**

This form is intended for students to have the opportunity to provide feedback on our department, classes, faculty, staff, and facilities.

https://surveys.csus.edu/jfe/form/SV_8oykZMtZKVvpggK



Student Organization Videos



SACRAMENTO STATE
Redefine the Possible



National Student Speech Language Hearing Association (NSSLHA)

“The NSSLHA chapter at Sac State strives to encourage professional interest, promote student involvement in our community, and provide information regarding speech, language, and hearing disorders to Sacramento State students and community members.”

CALIFORNIA STATE UNIVERSITY, SACRAMENTO

Fundraiser Chair-
Bryce MacMillan

Bake
Sale
FUNDRAISER



CALIFORNIA STATE UNIVERSITY, SACRAMENTO

R.A.I.N.B.O.W. Organization

<https://www.rainboworg.com/>



“R.A.I.N.B.O.W Organization is a student organization created to provide an open and safe environment to speak freely on topics about equality and intersectionality in the field of speech pathology and audiology”

CALIFORNIA STATE UNIVERSITY, SACRAMENTO



Student Academy of Audiology

<https://www.saacsus.com/>



On Instagram: @saacsus

SAA Welcome Video

The Student Academy of Audiology serves as a collective voice for students and advances the rights, interests, and welfare of students pursuing careers in audiology. The Student Academy of Audiology introduces students to lifelong involvement in activities that promote and advance the profession of audiology and provides services, information, education, representation and advocacy for the profession and for the students and the public we serve.

CALIFORNIA STATE UNIVERSITY, SACRAMENTO

Student Interprofessional Education Organization (SIPE)

<https://sipecsus.wixsite.com/website>



On Instagram @sipesacstate

Bringing students from different health professions
together to learn from, and with, each other.

<https://www.youtube.com/watch?v=xWNxslgV6Xs>



CALIFORNIA STATE UNIVERSITY, SACRAMENTO



**WHO CAN
JOIN?**



CALIFORNIA STATE UNIVERSITY, SACRAMENTO

Q & A



SACRAMENTO STATE
Redefine the Possible

Clinic Tours!

Faculty and staff will lead students on a tour of CSAD clinics within Folsom Hall, beginning with the 2nd floor Speech & Language clinic and ending with the 1st floor Audiology clinic.



Student Organization Social Hour following tours.

Audiology clinic waiting room, foyer, and Folsom Hall exterior
adjacent to Audiology clinic.

