

**Folsom Hall**  
**Building Emergency Action Plan**



**SACRAMENTO  
STATE**

**Folsom Hall**  
**Building Emergency Action Plan**

*Maintaining an effective building coordinator program helps to ensure the safety of employees, students, and visitors in the event of an emergency.*

**REVIEWED/UPDATED BY**

Tanya K. Altmann, Chair SoN

**DATE LAST REVIEWED**

01/24/2020

***Note: This Building Emergency Action Plan Template is for Building Administrators/Coordinators to use as their own building plan.***

- Customize the content of this BEAP to meet your building's specific needs, operations and locations for your department.
- Once this plan is completed, it will be an appendix to the larger Sacramento State University Emergency Operations Plan.
- Complete all blank form fields in this document. Note: Some of the repeated fields will automatically populate other pages as you enter your data.
- If further assistance is required or if you have additional suggestions to improve this template, contact the Department of Risk Management at 916-278-6119.

# Folsom Hall

## Building Emergency Action Plan

### INTRODUCTION

A Building Emergency Action Plan (BEAP) is a safety plan in which faculty, staff, students, and guests need to follow in an event of an emergency. This plan is a supplement to the comprehensive **Sacramento State Emergency Operations Plan**. The following emergency response information is provided with the understanding that all situations in a critical incident cannot be predicted, but this information will assist in establishing the minimum emergency preparedness procedures training for all personnel in our building.

- The following emergency response information provided is intended to be used as guidelines only.
- Always remember, the first priority is the safety and protection of life.
- In accordance with the guidance in the **Sacramento State Emergency Operations Plan**, this plan will be reviewed and updated annually.
- Annual training on this plan should include all key staff members and building occupants to provide the most effective Emergency Preparedness.
- This Building Emergency Action Plan (BEAP) is intended for use by all Departments that occupy University facilities and should be completed as an overall building plan, including all Departments and areas of the building.

### Additional Resources

- **The Sacramento State Emergency Notification System (ENS)** [ENS](#) is a mass notification system that automatically sends emergency messages to Sacramento State e-mail addresses and telephone numbers during an urgent situation that has the potential to affect your health and safety.
  - Opting in is voluntary, but you are strongly urged to opt-in and provide your personal contact information, as it may prove to be the most direct way to reach you in a campus emergency.
  - Students, faculty and staff may choose to be contacted by the ENS system by cell phone, text messaging, personal email and/or home telephone.
- **Risk Management Services Safety Hotline 82020** is for reporting potential health and safety hazards which may put the campus community at risk to injuries.

*If you have any questions or suggestions regarding this document, please direct them to:  
Todd Dangott, Emergency Management Coordinator, 916-278-7233, [dangott@csus.edu](mailto:dangott@csus.edu).*

**Folsom Hall**  
**Building Emergency Action Plan**

**GENERAL INSTRUCTIONS FOR ALL EMERGENCY SITUATIONS**

**CALLING 9-1-1 (916-278-6000 from cell phone)**

- ✓ *Get out of immediate danger and stay calm.*
- ✓ In the event of a fire, or if you feel the building's occupants are in danger:
  1. Activate the building's fire alarm system *BEFORE* calling 9-1-1.
  2. Evacuate the building immediately!
  3. Refer to the **Evacuation Procedure / Building Maps** section within this document for additional evacuation information.
- ✓ **To report any police, fire, or medical emergency, call 9-1-1 from any campus phone (916-278-6000 from cell phone).**

**When calling 9-1-1:**

- ✓ Stay on the line with the dispatcher.
- ✓ Provide the address of the building involved and your exact location. This is especially important if you are calling from a cell phone.
- ✓ College or Center: College Health & Human Services
  - |                         |                           |
|-------------------------|---------------------------|
| <b>Folsom Hall</b>      | Nsg, PT, UTAPS, CSAD, AT  |
| <small>Building</small> | <small>Department</small> |
- ✓ Provide a thorough description of the incident to ensure that proper resources are dispatched.
- ✓ When providing a description of an individual, describe from top (head) to bottom (feet).
- ✓ ***Do not hang up until the dispatcher directs you to.***

**Folsom Hall**  
**Building Emergency Action Plan**

**CAMPUS EMERGENCY CONTACT NUMBERS**

<ul style="list-style-type: none"> <li>✓ <b>MEDICAL EMERGENCIES</b></li> <li>✓ <b>FIRE/SMOKE</b></li> <li>✓ <b>HAZARDOUS MATERIAL SPILLS</b></li> <li>✓ <b>VIOLENCE AND THREATS</b></li> <li>✓ <b>WHEN IN DOUBT...</b></li> </ul>		<p><b>DIAL 9-1-1 FROM ANY CAMPUS PHONE</b> <b>916-278-6000</b> from cell phone</p> <p>Identify yourself, your location, the location and type of incident, and if an evacuation is underway. Answer any questions and do not hang up the phone until the operator is finished.</p>
---	--	--



The nearest **AED** is located: front guard desk



see AED map for nearest location: <https://tinyurl.com/campus-aed-map>

**IMPORTANT PHONE NUMBERS**

**FOR AN ACTUAL EMERGENCY, DIAL 9-1-1**

*From any campus phone, 9-1-1 is directed to Sacramento State Police*

*For an emergency on campus 916-278-6000 (from cell phone)\**

Sacramento State Police Department	916-278-6000 / 8-6000 from campus phone
Risk Management Services	916-278-6119
Campus Safety (non-emergency) Hotline	916-278-2020
Facilities Operations and Maintenance	916-278-6242
Student Health and Counseling Services	916-278-6461
Women's Resource Center	916-278-7388
Pride Center	916-278-8720
College of Health & Human Services, Dean's Office	916-278-7255
<i>Additional Contact Person/Department</i>	<i>Additional Contact Telephone Number</i>
<i>Additional Contact Person/Department</i>	<i>Additional Contact Telephone Number</i>
<i>Additional Contact Person/Department</i>	<i>Additional Contact Telephone Number</i>
<i>Additional Contact Person/Department</i>	<i>Additional Contact Telephone Number</i>
<i>Additional Contact Person/Department</i>	<i>Additional Contact Telephone Number</i>

*\* It is highly suggested that you program the Sacramento State Police Department's dispatch phone number (916) 278-6000 in your cell phone. Dispatch handles both emergency and non-emergency calls 24/7. They can direct all emergency services to the exact campus location quickly and efficiently.*

**Folsom Hall**  
**Building Emergency Action Plan**

**BUILDING EVACUATION PROCEDURES**

The following emergency evacuation procedures have been developed for this facility:

<b>Building Name:</b>	<b>Folsom Hall</b>
<b>Primary Assembly Area:</b>	Far end west parking lot near where Hwy 50 crosses over Folsom Blvd
<b>Secondary Assembly Area:</b>	Top level back parking garage
<b>Tertiary (3<sup>rd</sup>) Assembly Area:</b>	Across Folsom Blvd in Sutter Center for Psychiatry parking lot

**Evacuation**

Evacuation is total building or partial building evacuation due to conditions making it no longer safe to remain inside a building or a specific area in a building. This level of evacuation requires occupants to move out and away from the building being evacuated.

**Prior to Exiting**

After being notified to evacuate, stop all work activities and evacuate immediately. Securely close departmental and office doors behind you. You may choose to lock your doors to prevent property theft (the Sacramento State Police Department has keys to campus buildings and rooms if access is necessary). Remember that you may not be allowed back into the building for an extended time.

**Evacuation Routes/Exiting the Building**

During an emergency evacuation, use the nearest door or stairway if available. Each employee needs to be aware of at least two exit routes in their main building in the event one is compromised.

All campus buildings over one story high must have building evacuation signs posted on every floor. The signs must be posted at all stairway and elevator landings and immediately inside all public entrances to the buildings.

**Assembly Area**

After exiting the building, all faculty, staff, students, and visitors should follow the evacuation route to the pre-arranged assembly area. *It is important to have both a primary and secondary evacuation point, and if possible, a tertiary assembly point. All assembly areas should be at least 500 feet from the incident scene. Be sure to list all buildings in which department members are assigned space and the corresponding assembly in the table above.*

The primary assembly area is the location to complete an initial roll call of building occupants and to determine if utilizing the secondary or tertiary assembly area is more appropriate.

## Folsom Hall Building Emergency Action Plan

Floor Marshals (or their alternates) are required to conduct the roll call, and to report the roll call results to the Building Coordinator (or designee), who can then provide the information to first responders.

For classroom buildings where classrooms are in use, the roll call responsibility is delegated to the classroom instructor, who will then report the information to the Floor Marshal, who will provide the information to the Building Coordinator. *This means that floor marshals and building coordinators should always have updated building rosters at their disposal.*

During a large-scale evacuation, your building's assembly area may not be available; follow directions of emergency personnel to a safe alternate location.

### Critical Equipment Operation

This facility currently has no critical equipment operation or shutdown requirements.

*(Note: Safety is a top priority Sacramento State and there are no critical operations worth risking one's welfare. If you believe your department has critical operations requiring an employee(s) to remain in the building during an evacuation, please contact [Meysee Vang](#) to develop this section of the plan.)*

### Notification of Emergencies

Occupants will be notified of emergencies by the sounding of the installed fire alarm system or occupants may receive verbal notification of an emergency.

### Re-entering the Building

After evacuating the building, **DO NOT RE-ENTER BUILDING**. Public Safety will determine when it is safe to re-enter the building and will inform the Building Coordinator if applicable. The Building Coordinator will then give the "all clear" to return to the building.

### People with disabilities (mobility-impaired), access or functional needs

- Report to the Floor Marshal for assistance.
- Alert the Floor Marshal of any specific information that will assist in safe evacuation.
- **DO NOT USE ELEVATORS** when you need to evacuate.
- If unable to evacuate, move to an **Area of Refuge** near your location which can include a fire-rated stairwell.

### Evacuation/stair chairs

- Stair chairs are located on campus in various locations. (See Appendix A)
- Stair chairs are designed to aid those who require assistance to evacuate.
- Remember that not all situations require evacuation and that areas of refuge may be a better alternative.
- **DO NOT USE ELEVATORS** when you need to evacuate.
- If your department would like to be trained on how to use the stair chair please contact the Department of Risk Management at (916) 278-6119.

**Folsom Hall**  
**Building Emergency Action Plan**

**SHELTER-IN-PLACE GUIDELINES**

<b>Building Name:</b>	<b>Folsom Hall</b>
<b>Primary Relocation Site:</b>	Stairwell center of the building
<b>Secondary Relocation Site:</b>	Stairwell east side of building near UTAPS

**Shelter-in-Place**

Shelter-in-place is used in emergency situations where hazardous materials have been released into the atmosphere or in emergencies related to civil unrest, violent demonstrations or active shooter.

**Notification of Building Occupants**

The University notifies its community of an emergency using the **ENS system**. However, due to the fast moving nature of the event, it may not be possible to notify building occupants in a timely manner. Therefore, shelter-in-place may be prompted by the signaling of sirens, loud speakers, or notification from building managers, Building Coordinator, Floor Marshals or other building occupants that are aware of an immediate danger.

If you feel your safety is jeopardized and sheltering in place is an appropriate strategy giving your circumstances, you do not have to wait for an official notification.

**Strategies for effective Sheltering-in-Place**

- ✓ If possible, identify room(s) for sheltering in place. Rooms should have limited number of windows and vents, and may contain essential disaster supplies such as non-perishable foods, bottled water, battery powered radios, first aid supplies, flashlights, extra batteries, duct tape, plastic sheeting, and plastic garbage bags. Choose rooms above the ground floor with adequate space for everyone to sit and a hard wired telephone available.
- ✓ Once notified, seek immediate shelter. If it is safe to do so, head to the designated shelter in place room(s). In some situations, you may be asked to remain at your workstation, and in others, to relocate to a pre-determined location.
- ✓ **DO NOT** use elevators as a shelter.
- ✓ Close all doors and windows. Lock them if available. If there is a danger of explosions from outside, close all curtains, shades, and blinds.
- ✓ Write down names of everyone in the room, and call Sacramento Police Dispatch to report who is in the room with you, and their affiliation with your business (employee, visitor, client, customer).
- ✓ Remain in sheltered area until emergency personnel notify you that it's safe to leave.
- ✓ When given the all clear, open windows and doors, turn on HVAC and ventilation systems. Go to designated assembly area to discuss the next plan of action based on information received from emergency response personnel.

**Folsom Hall**  
**Building Emergency Action Plan**

**Shelter-in-Place for Persons with Disabilities**

Individuals with mobility impairments have the option of sheltering within an Area of Refuge.

*NOTE: An area of refuge is a location in the building designed to hold occupants during a fire or other emergency, when evacuation may not be safe or possible. Occupants can wait there until rescued. If the designated Area of Refuge is unsafe, report alternate location to the Command Center via two-way radio or cell phone to receive instructions to the nearest safe location.*

**Safety Assessment**

After an all clear has been given, building occupants should contact supervisors or other appropriate individuals to inform them of their safety and location.





Map Satellite

+ -



*Primary Assembly Area*

*Sacramento Assembly Area*

*Folsom Hall*

*Tubing Assembly Area*

*1667 Folsom Blvd*

*3rd*

AKT Development Corporation

Field

Parking Lot 14

Alta Vista Solutions

AL Financial Corporation

Folsom Blvd

Caliber Collision

Legacy Muay Thai and Fitness

Public Storage

Omega Collision of Sacramento

Sutter Center for Psychiatry

Life Storage

Secured Self Storage

Good Nite Inn Sacramento

Comf Suites Sacra

Home Depot

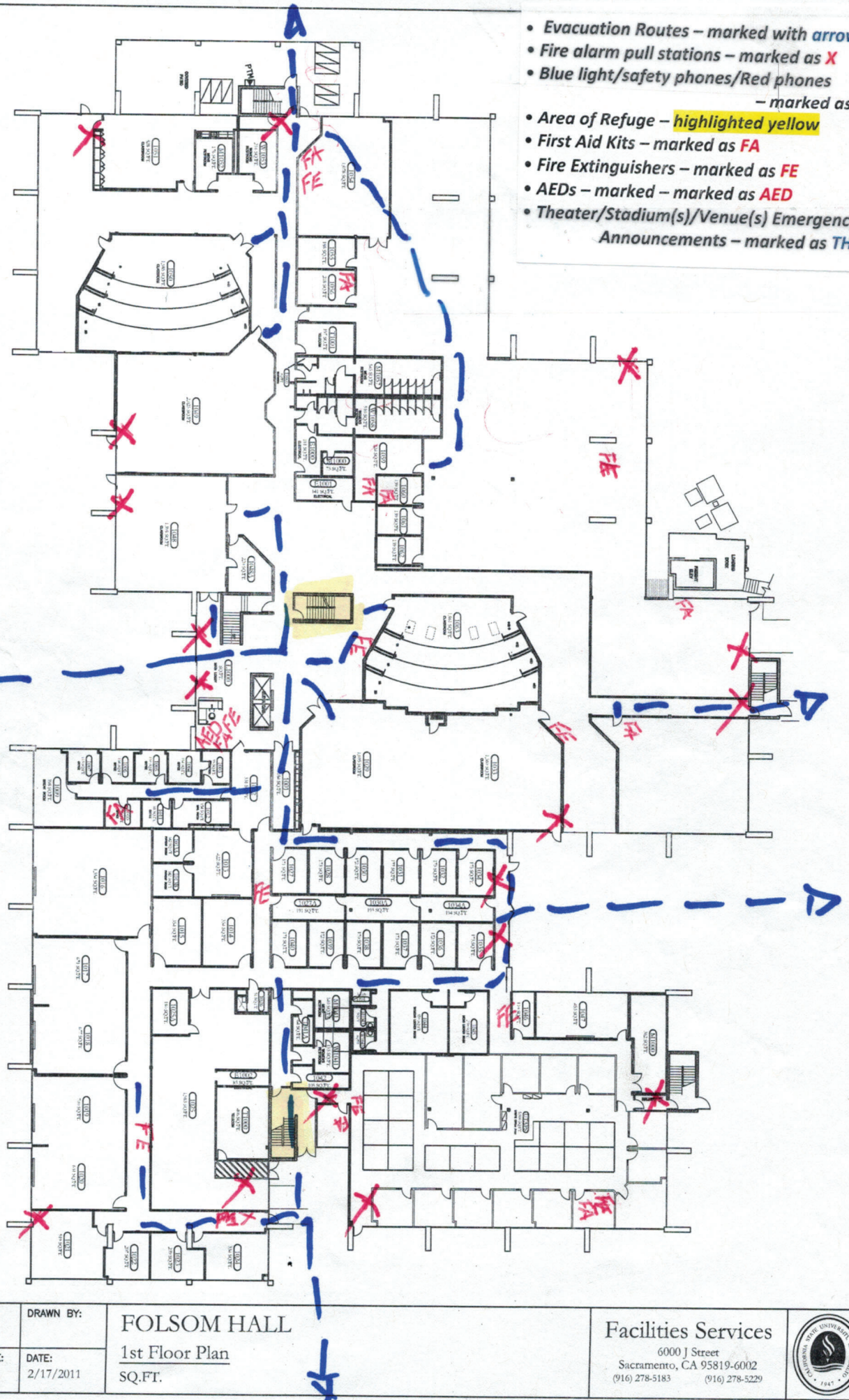
Daily Grind Coffee




Map data ©2020 Google Terms of Use Report a map error

- Evacuation Routes – marked with **arrows**
- Fire alarm pull stations – marked as **X**
- Blue light/safety phones/Red phones – marked as **X**
- Area of Refuge – **highlighted yellow**
- First Aid Kits – marked as **FA**
- Fire Extinguishers – marked as **FE**
- AEDs – marked – marked as **AED**
- Theater/Stadium(s)/Venue(s) Emergency Announcements – marked as **TH/S**

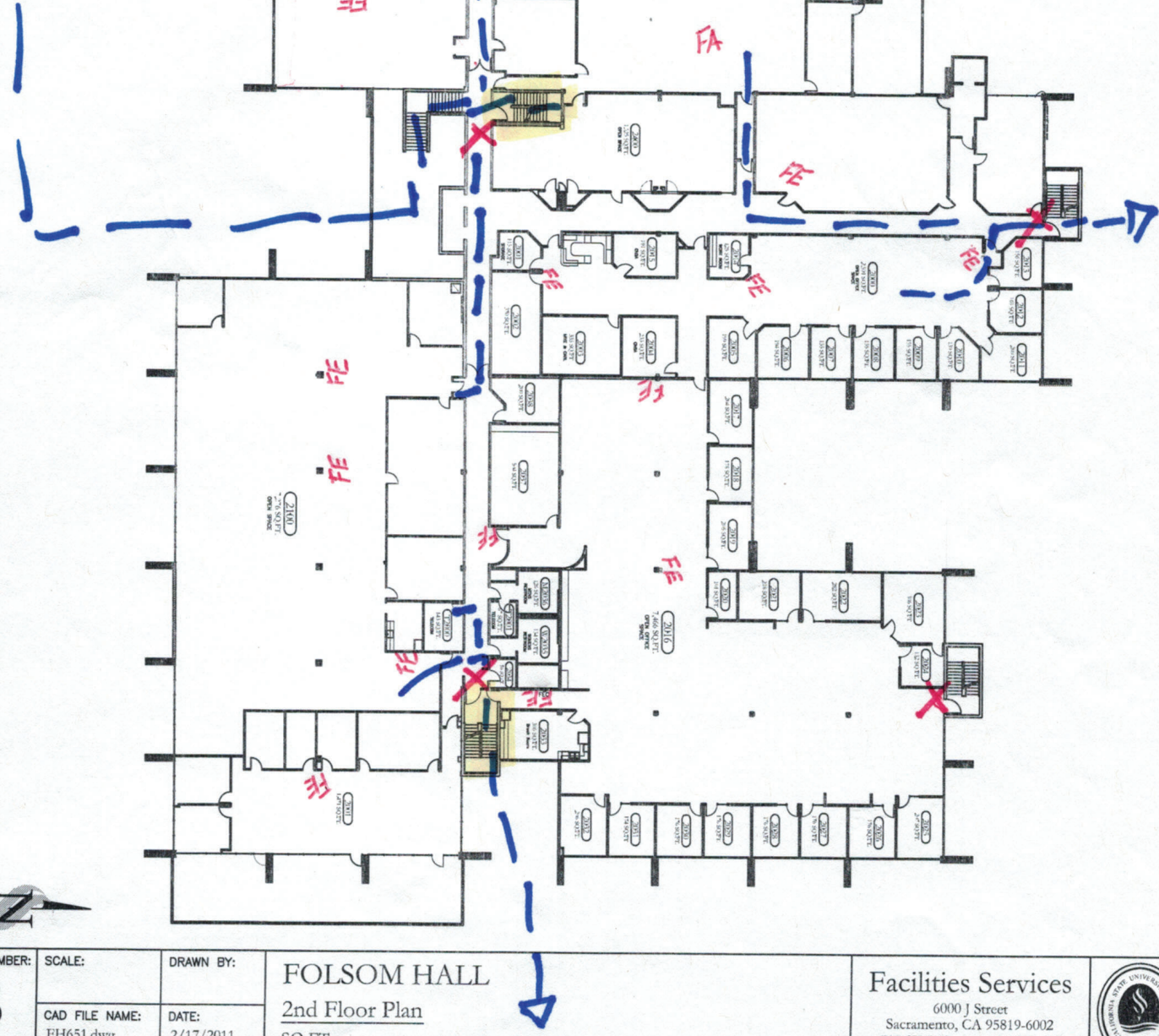
*Folsom Blue*




BUILDING NUMBER: <b>65</b>	SCALE:	DRAWN BY:	FOLSOM HALL 1st Floor Plan SQ.FT.	Facilities Services 6000 J Street Sacramento, CA 95819-6002 (916) 278-5183 (916) 278-5229	
	CAD FILE NAME: FH651.dwg	DATE: 2/17/2011			

GRAPHIC SCALE  
0' 5' 10' 20'

- Evacuation Routes – marked with arrows
- Fire alarm pull stations – marked as X
- Blue light/safety phones/Red phones – marked as X
- Area of Refuge – highlighted yellow
- First Aid Kits – marked as FA
- Fire Extinguishers – marked as FE
- AEDs – marked – marked as AED
- Theater/Stadium(s)/Venue(s) Emergency Announcements – marked as TH/S



BUILDING NUMBER: <b>65</b>	SCALE:	DRAWN BY:	<b>FOLSOM HALL</b> 2nd Floor Plan SQ.FT.	Facilities Services 6000 J Street Sacramento, CA 95819-6002 (916) 278-5183 (916) 278-5229	
	CAD FILE NAME: FH651.dwg	DATE: 2/17/2011			

- Evacuation Routes – marked with arrows
- Fire alarm pull stations – marked as X
- Blue light/safety phones/Red phones – marked as X
- Area of Refuge – highlighted yellow
- First Aid Kits – marked as FA
- Fire Extinguishers – marked as FE
- AEDs – marked – marked as AED
- Theater/Stadium(s)/Venue(s) Emergency Announcements – marked as TH/S

CAISTRS – 3RD FLOOR

