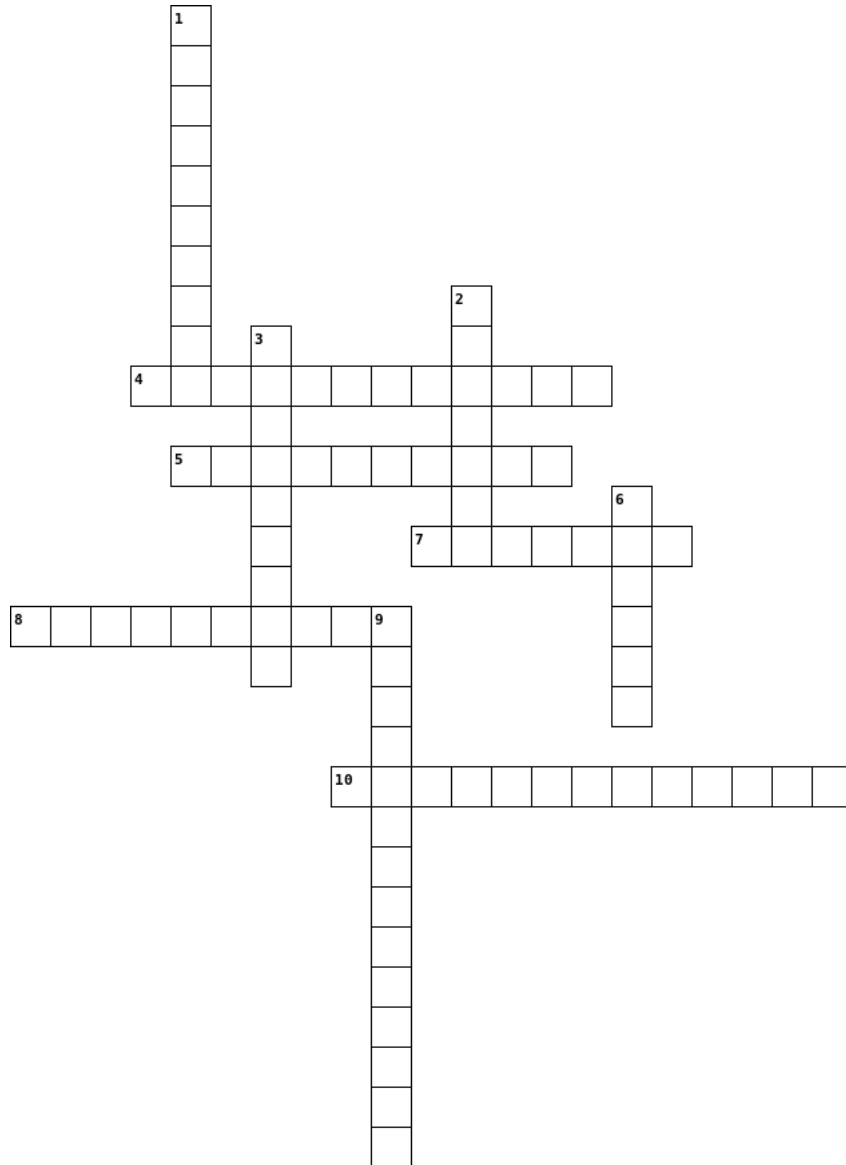


## Remember

### 1) Crossword



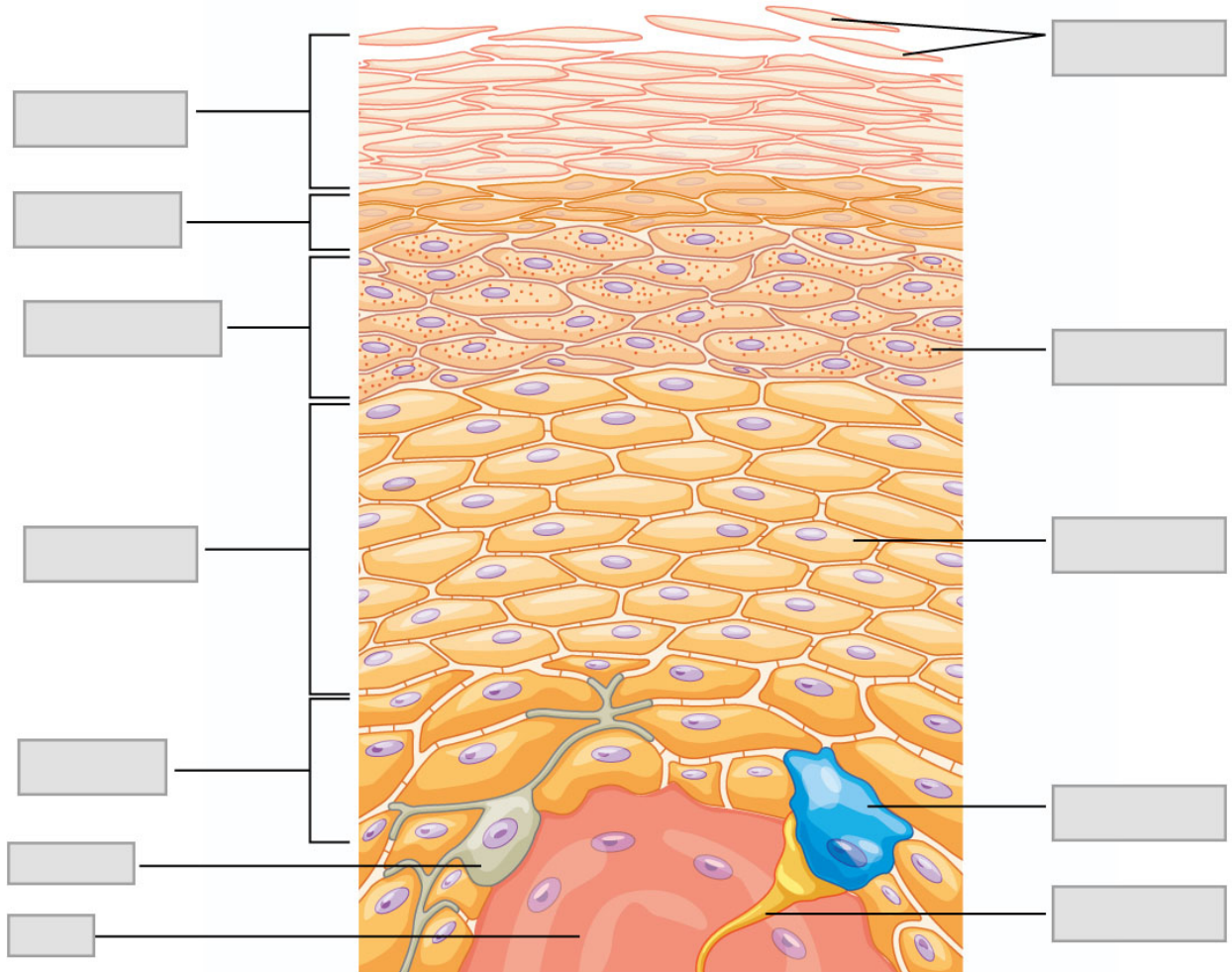
#### Across

4. cells that make keratin
5. tissue responsible for filtration, absorption, secretion, and excretion
7. tissue excitable and used for communication
8. layer of the skin that connects it to underlying structures
10. the reproductive layer of the skin where new cells are made

#### Down

1. tissue responsible for binding, support, protection, and insulation
2. the most abundant sweat glands made of simple, coiled, tubular glands
3. this layer of the dermis is composed of loose areolar tissue
6. tissue responsible for movement
9. found only in the thickest layers of the body

2) Study figure 5.3 of your OpenStax textbook for 60 seconds. Then, use the space below or a whiteboard to draw the epidermis and properly label each layer.



## Create

1) Integument is an integrated tissue that uses teamwork to accomplish many functions that lead to homeostasis. Draw the figure shown below, properly label the components, and then hypothesize how knocking out each component would affect homeostasis.

