

Ric Brown, Ed.D.
Vice President for Academic Affairs
California State University, Sacramento

CALIFORNIA STATE UNIVERSITY LSAMP PROGRAM

NSF funding of Bridges to the Doctorate (BD), Cohort III has enabled CSU-LSAMP to host a second cohort of students at California State University, Los Angeles. In 2005-2006, Cal State LA will serve as the site for both CSU-LSAMP BD-Cohort II and BD-Cohort III activities. The existence of the Bridge to the Doctorate programs through the Minority Opportunities in Research (MORE) and the CEA-CREST offices have provided students access to graduate study in a broader array of STEM disciplines. Thirteen talented students have been selected as scholars in the Louis Stokes Alliance for Minority Participation Bridges to the Doctorate Cohort III.



CSU-LSAMP Bridge to the Doctorate III California State University, Los Angeles Academic Year 2005-2006



Jose Amenero
BS, Electrical Engineering, 2001
Univ. of CA, Santa Barbara
Current: Computer Science
(emphasis: Computer Engineering)
Career Goal: Ph.D.— Faculty



Lucinda Robledo
BS, Applied and Computational Mathematics, 2005
San Jose State Univ.
Current: Applied Mathematics
(emphasis: Biomathematics)
Career Goal: Ph.D. — Faculty



Cynthia Nelly Carrion
BS, Marine Biology, 2005
Univ. of CA, Los Angeles
Current: Biological Sciences
(emphasis: Biological Oceanography)
Career Goal: Ph.D.— Faculty



Gilson J. Sanchez
BS, Biology, 2004
Univ. of CA, Riverside
Current: Biological Sciences
(emphasis: Molecular Biology)
Career Goal: Ph.D.



Victor Manuel Galvan
BS, Biological Sciences, 2005
Cal State Univ., Fullerton
Current: Biological Science
(emphasis: Biological Oceanography)
Career Goal: Ph.D. — Faculty



Angela Lucia Venegas
BS, Psychobiology, 2005
Univ. of CA, Los Angeles
Current: Biological Sciences
Career Goal: M.D./Ph.D.



Eduardo Gonzalez
BS, Electrical Engineering, 2005
Univ. of CA, Santa Barbara
Current: Electrical Engineering
(emphasis: Wireless Communications Systems)
Career Goal: Ph.D. — Faculty



Keith Allen Whitson, Jr.
BS, Mathematics and Computer Science, 2005
Cal State Dominguez Hills
Current: Applied Mathematics
Career Goal: Ph.D. — Faculty



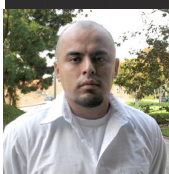
Vanessa Liz Gonzalez
BS, Marine Biology, 2005
Univ. of CA, Los Angeles
Current: Biological Sciences
(emphasis: Biological Oceanography)
Career Goal: Ph.D. — Faculty



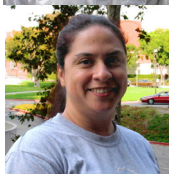
Renee T. Williams
BS, Chemistry, 2002
Univ. of CA, Irvine
Current: Chemistry
(emphasis: Analytical Chemistry)
Career Goal: Ph.D. — Faculty



Carlos Hernandez
BS, Biochemistry, 2005
Cal State Los Angeles
Current: Chemistry
(emphasis: Organic)
Career Goal: Ph.D.— Research



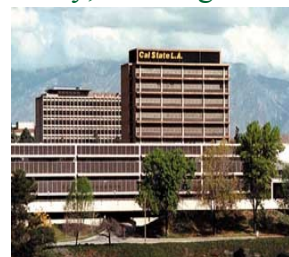
Carlos Alberto Ibarra
BA, Pure Mathematics, 2005
Cal State San Bernardino
Current: Pure Mathematics
Career Goal: Ph.D.— Faculty/Research



Grace I. Aldana Masangkay
BS, Biochemistry, 2005
Cal State Los Angeles
Current: Chemistry
(emphasis: Biochemistry)
Career Goal: Ph.D.— Faculty

California State University, Los Angeles

Located five miles east of downtown Los Angeles, the green hilltop campus has a suburban feel, yet serves one of the most diverse urban populations in the world. Cal State L.A. (<http://www.calstatela.edu>) is an especially good site for advanced training in the sciences. The University has made conscious and consistent efforts to hire talented science faculty, to recruit underrepresented students, to support team research that involves undergraduates as well as graduate students, to improve its facilities and to reconfigure its curriculum. More than two dozen four-year colleges and universities are within a 30 mile radius of campus, and numerous federal, state and private research laboratories operate in the region.



BD-III Coordinators at Cal State LA



Carlos Gutierrez

BD-III Lead Project Director
Professor of Chemistry
Director, MORE Programs
Ph.D., 1975, Synthetic Organic Chemistry
University of California, Davis
(323) 343-2356
cgutier@calstatela.edu



Carlos Robles

BD-III Associate Project Director
Professor of Biology
Director, CEA-CREST Program
Ph.D., 1979, Zoology
University of California, Berkeley
Phone: (323) 343-2067
crobles@calstatela.edu



Margaret Jefferson

BD-III Associate Project Director
Professor of Genetics
Ph.D., 1977, Genetics
University of Arizona, Tucson
(323) 343-2059
mjeffer@exchange.calstatela.edu