

CALIFORNIA STATE UNIVERSITY LSAMP PROGRAM



Joseph Sheley, Ph.D.
Provost and Vice President
for Academic Affairs
California State
University, Sacramento

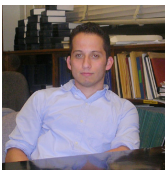
NSF funding of Bridges to the Doctorate (BD), Cohort III has enabled CSU-LSAMP to host a fourth cohort of students at San Francisco State University. In 2006-2007, San Francisco State University serves as the graduate institutional site for BD-Cohort IV activities. The existence of the Bridge to the Doctorate programs has provided students access to graduate study in a broader array of STEM disciplines. Twelve talented students have been selected as scholars in the Louis Stokes Alliance for Minority Participation Bridges to the Doctorate Cohort IV.



CSU-LSAMP Bridge to the Doctorate IV San Francisco State University Academic Year 2006-2007



Maree Afaga
BA, Mathematics, 2006
California State University, Stanislaus
Current: Mathematics
Career Goal: Ph.D.— Faculty



Jorge Franco
BS, Biology, 2006
San Francisco State University
Current: Biology
Career Goal: Ph.D.— Faculty



Akili Anderson
BS, Electrical Engineering, 2006
San Jose State University
Current: Engineering
Career Goal: Ph.D.— Research/Faculty



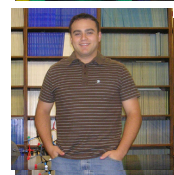
Mary Greene
BS, Chemistry, 2006
San Francisco State University
Current: Biology
Career Goal: Ph.D.— Faculty



Belem Avila
BS, Biochemistry and Molecular
Biology, 2004
University of California, Santa Cruz
Current: Chemistry
Career Goal: Ph.D.— Faculty



Jose Ibarra-Soza
BS, Chemistry (Concentration: Biochemistry),
2006
University of California, Santa Cruz
Current: Chemistry
Career Goal: Ph.D.— Faculty



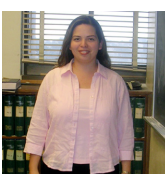
Alexander Chavez
BA, Mathematics, 2005
San Jose State University
Current: Mathematics
Career Goal: Ph.D.— Faculty



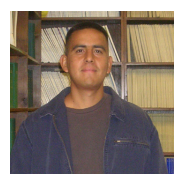
Lilia Ornelas
BA, Biology, 2006
California State University, Stanislaus
Current: Biology
Career Goal: Ph.D.— Research/ Faculty



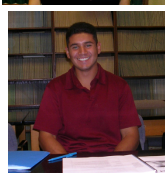
Anastasia Chavez
BS, Applied Mathematics, 2006
San Francisco State University
Current: Mathematics
Career Goal: Ph.D.— Faculty



Mayra Pastore
BS, Chemistry, 2006
San Francisco State University
Current: Chemistry
Career Goal: Ph.D.— Research/Faculty



Arturo Flores
BS, Computer Science, 2000
California State University, Stanislaus
Current: Computer Science
Career Goal: Ph.D.— Faculty



Lawrence Varela
BS, Computer Science, 2006
San Jose State University
Current: Computer Science
Career Goal: Ph.D.— Research/Faculty

BD-IV Coordinators at San Francisco State



Sheldon Axler

BD-IV Co-Project Director
Dean of the College of Science &
Engineering
Professor of Mathematics,
San Francisco State University
PhD 1975, UC Berkeley
Research interest: functional analysis
(415) 338-1571
axler@sfsu.edu



David Ellis

BD-IV Co-Project Director
Professor of Mathematics
San Francisco State University
Ph.D., 1969, Mathematics
City University of New York
(415) 338-1026
dellis@math.sfsu.edu

San Francisco State University



San Francisco State University is a comprehensive university with eight colleges offering baccalaureate degrees in 112 areas. Reflecting the ethnically diverse area in which it is located, SFSU ranks 10th in the nation in awarding baccalaureate degrees to minorities. The College of Science and Engineering philosophy that the best education of its students comes through involvement in research and the solution of real-world problems. Faculty encourage students to ignore traditional barriers, to become actively involved in research, and to connect with the Bay Area's rich science and technology network. SFSU's many state-of-the-art

facilities include a Conservation Genetics Laboratory, the Romberg Tiburon Center for Environmental Studies, an electron microscope facility, computational chemistry and visualization laboratory, a DNA analysis facility, a thin core facility, the Nuclear Magnetic Resonance Center, Mass Spectrometry Center and an Alpha 3000 internet server.