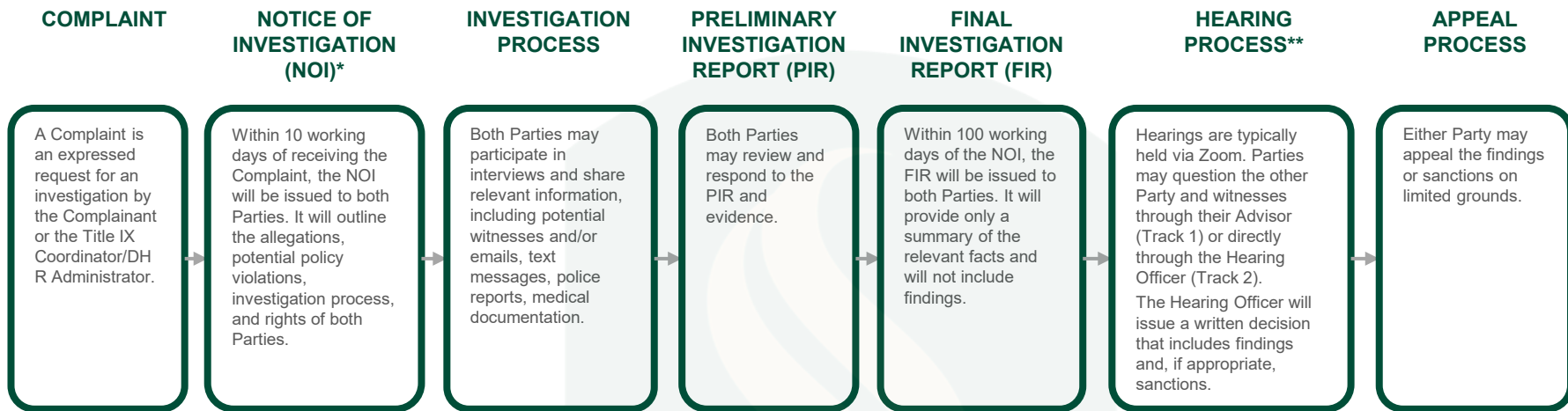


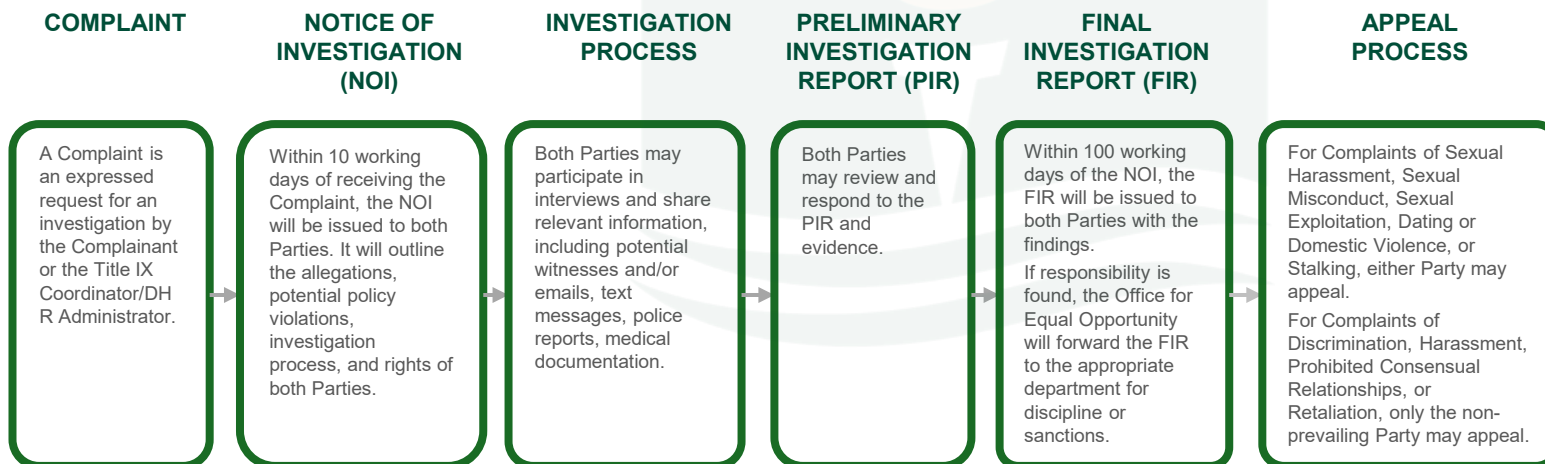
## HEARING PROCESS



\*The Office for Equal Opportunity does not investigate formal complaints unless the allegations meet required criteria.

\*\*A hearing will be provided when: (1) The investigation is conducted under Track 1 - Federal Mandated Hearing Process or (2) when the complaint is against a student and involves allegations of Sexual Harassment, Sexual Misconduct, Dating Violence, Domestic Violence, Sexual Exploitation, or Stalking (also known as Track 2).

## NON-HEARING PROCESS



## COMMUNICATION & SUPPORT

The **Office for Equal Opportunity** provides Supportive Measures to both Parties and monthly status updates throughout the process. Parties may have an Advisor of their choice and request disability-related accommodations. See the Nondiscrimination Policy for details.