

Bus and Car Drop off plan – Jeff Dierking *Director of UTAPS*

- This project began over 3 years ago with a recommendation from the Transportation Advisory Committee (TAC) to find and install bus and rideshare zones on campus.
- UTAPS began by funding a study of campus performed by Fehr and Peers to locate possible locations and designed the plans for the project.
- The study was completed in May and we are moving forward to install the recommended bus zones by the science building (completed), Broad field house (November start) and some rideshare areas: on old Jed smith drive adjacent to PD (November start), in Lot 1C adjacent to Yosemite hall (November start).
- These areas will provide load/unload areas for small and large vehicles traveling to campus so that individuals will not have to cross an active roadway to access campus when dropped off.

Extra links

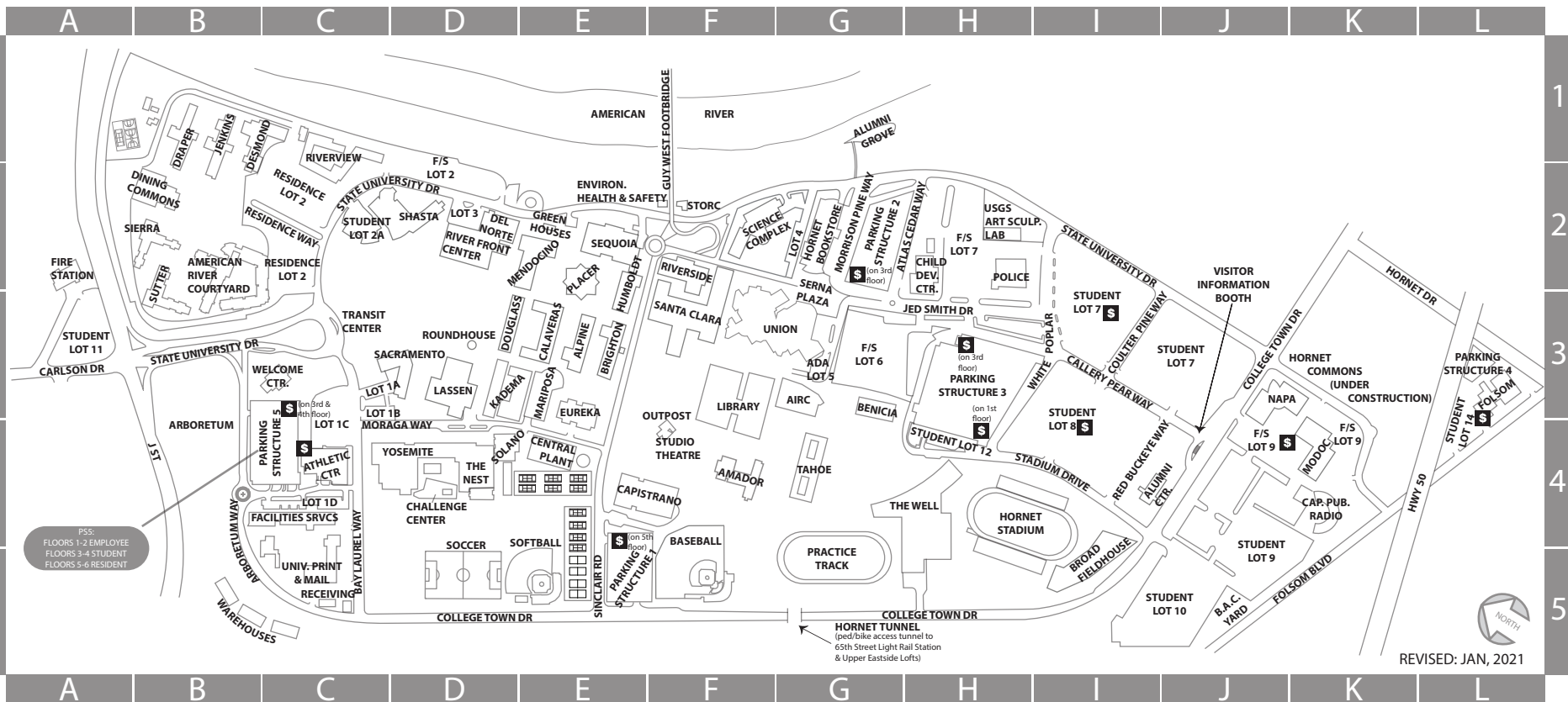
- [Campus Map \(csus.edu\)](https://csus.edu)
- <https://sacstate.atlassian.net/wiki/spaces/PUB/pages/676495440/Bus+Parking>



SACRAMENTO STATE

6000 J Street, Sacramento, CA 95819

SEE REVERSE SIDE OF MAP FOR BUILDING LOCATIONS.



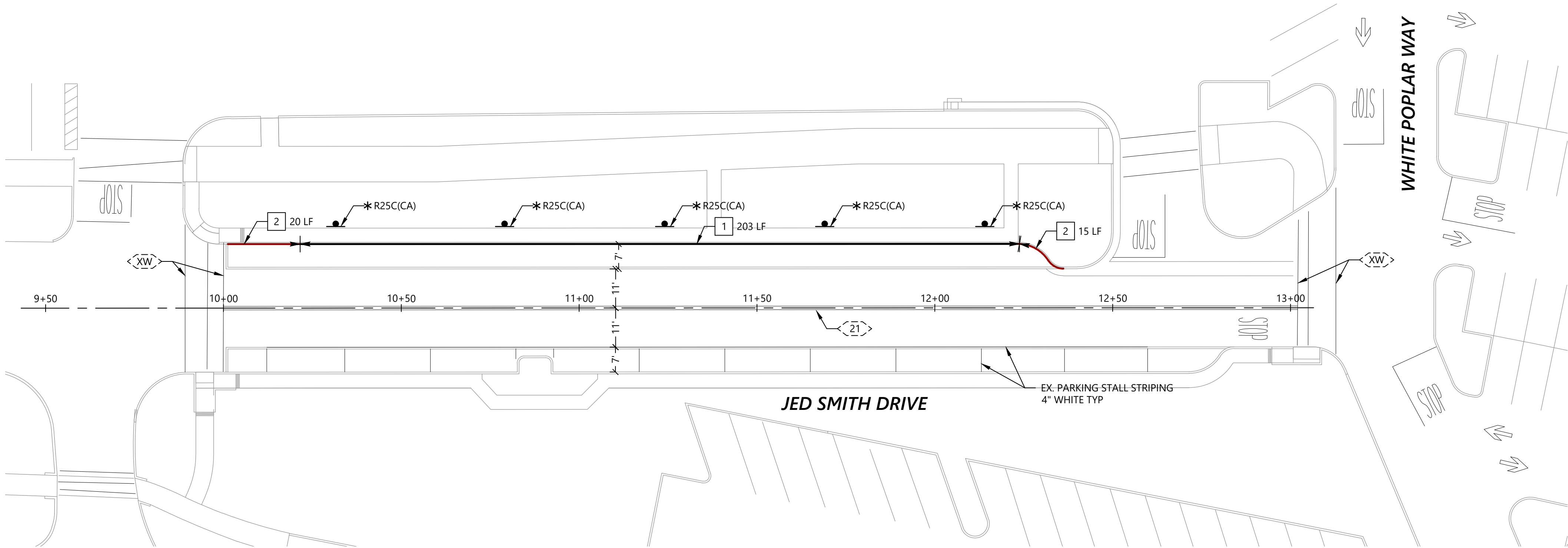
Campus visitors must display a valid Sac State parking permit in their vehicle at all times. Applicable State and CSU parking laws are enforced 24/7. Long-term parking permits may be purchased at the Bursar's Office in Lassen Hall or the University Transportation & Parking Services Office (UTAPS) in the Welcome Center. Two-hour and daily parking permits may be purchased from any machine indicated by **\$**. These permits are valid in student spaces. See reverse side for UTAPS contact information.

\$ TWO-HOUR AND DAILY PERMIT MACHINES

CAD USER: dmurphy
FILENAME: 4048.02-Layout.dwg
PLOT DATE: 4/28/2022 3:41:38 PM

PROJECT NOTES (THIS SHEET ONLY):

- 1 PAINT CURB WHITE.
- 2 PAINT CURB RED.



LEGEND

- <No>

EXISTING PAVEMENT DELINEATION DETAIL NUMBER
- <No>

INSTALL NEW PAVEMENT DELINEATION DETAIL NUMBER
- <XW>

EXISTING 12" WIDE WHITE CROSSWALK STRIPE
- <LL>

EXISTING 12" WIDE LIMIT LINE
- <LL>

INSTALL NEW 12" WIDE LIMIT LINE
- +

CHANGE IN STRIPING DETAIL
- +

CONFORM TO EXISTING STRIPING DETAIL
- Δ

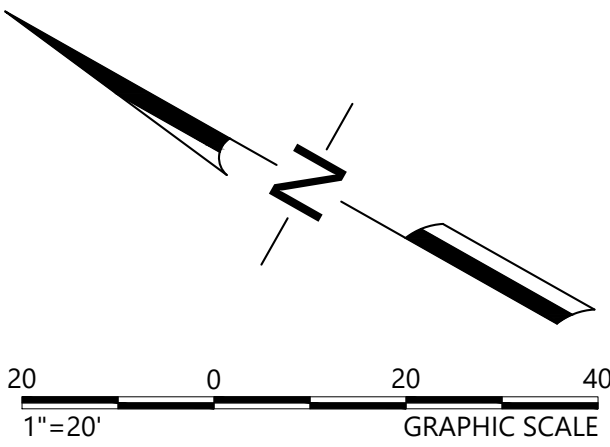
BEGIN STRIPING TRANSITION
- ///

REMOVE EXISTING PAVEMENT STRIPE, ARROW OR LEGEND (BY GRINDING)

- * INSTALL ROADSIDE SIGN
- REMOVE ROADSIDE SIGN
- ▲ RELOCATE EXISTING ROADSIDE SIGN ON NEW POST
- ROADSIDE SIGN TO REMAIN, PROTECT IN PLACE
- ⬇️ INSTALL ROADSIDE SIGN ON NEW POST
- INSTALL ROADSIDE SIGN ON EX. POST



R25C (CA)



Underground Service Alert

CALL BEFORE YOU DIG

Call: TOLL FREE

811/800

227-2600

TWO WORKING DAYS BEFORE YOU DIG

Fehr & Peers Associates, its employees, its officers or agents shall not be responsible for the accuracy or completeness of electronic copies of this plan sheet.

NO.	DATE	REVISIONS DESCRIPTION	BY

PROFESSIONAL ENGINEER
LEE MURPHY
00702001
CIVIL
STATE OF CA

NOT FOR CONSTRUCTION

DRAWN BY: YS

DESIGNED BY: DM

CHECKED BY: AE

DATE: 04/28/2022

PROJECT NO: RS21-4048

CAMPUS LOADING ZONES

SIGNING AND STRIPING PLAN

JED SMITH DRIVE

CSU SACRAMENTO

CALIFORNIA

L-4

SHEET 5 OF 8

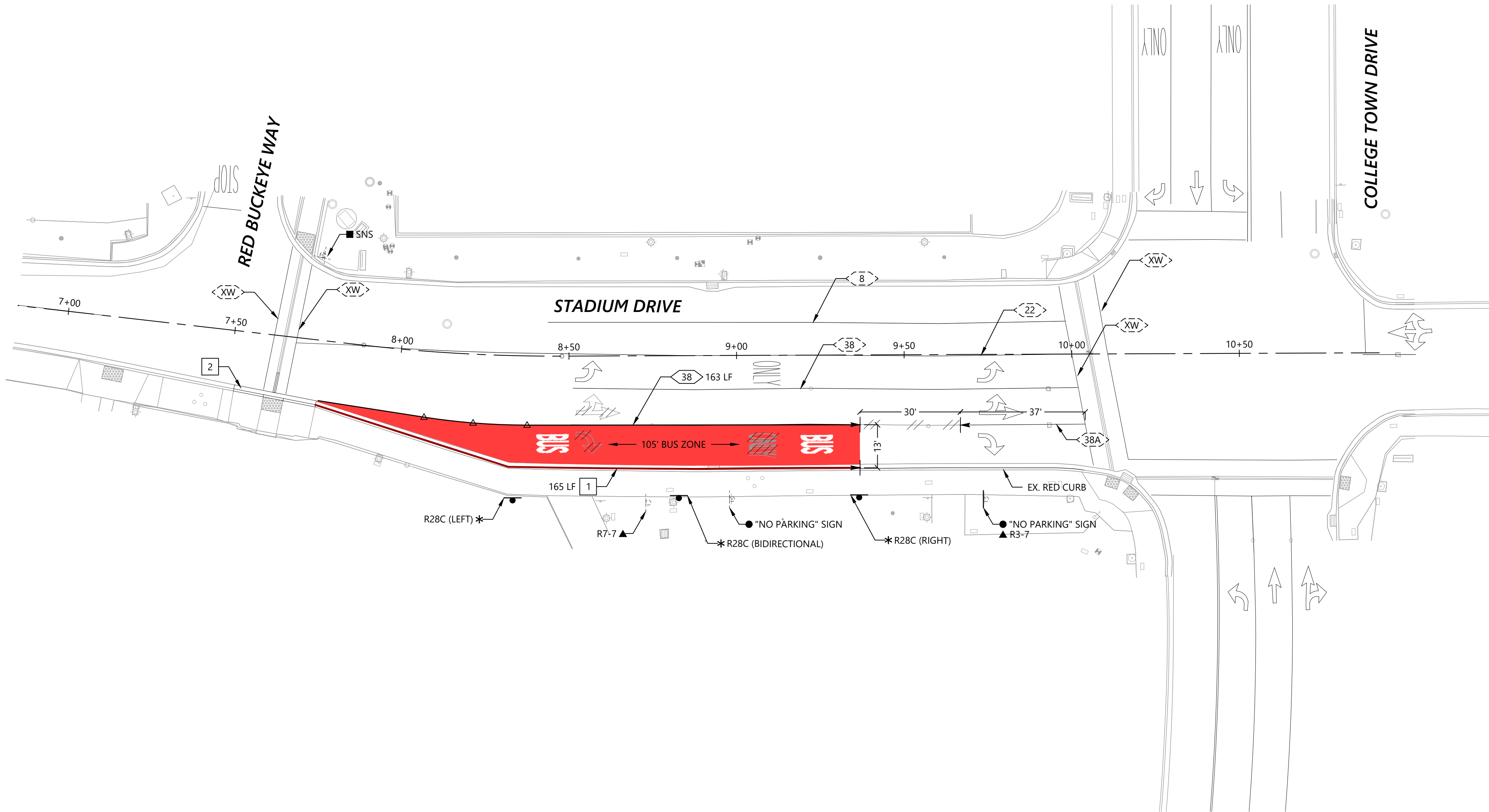
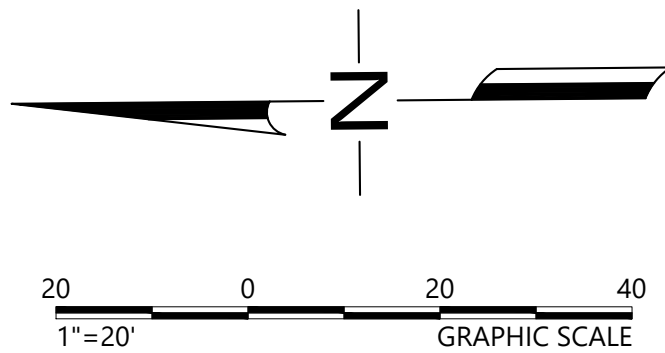
CAD USER: dmurphy

FILENAME: 4048.02-Layout.dwg

PLOT DATE: 4/28/2022 3:41:00 PM

PROJECT NOTES (THIS SHEET ONLY):

- 1 PAINT CURB RED.
- 2 REFER TO SHEET CD-2 FOR DETAILS ON GUTTER RECONSTRUCTION.



LEGEND

- EXISTING PAVEMENT DELINEATION DETAIL NUMBER
- INSTALL NEW PAVEMENT DELINEATION DETAIL NUMBER
- EXISTING 12" WIDE WHITE CROSSWALK STRIPE
- EXISTING 12" WIDE LIMIT LINE
- INSTALL NEW 12" WIDE LIMIT LINE
- CHANGE IN STRIPING DETAIL
- CONFORM TO EXISTING STRIPING DETAIL
- BEGIN STRIPING TRANSITION
- REMOVE EXISTING PAVEMENT STRIPE, ARROW OR LEGEND (BY GRINDING)

- INSTALL ROADSIDE SIGN
- REMOVE ROADSIDE SIGN
- RELOCATE EXISTING ROADSIDE SIGN ON NEW POST
- ROADSIDE SIGN TO REMAIN, PROTECT IN PLACE
- INSTALL ROADSIDE SIGN ON NEW POST
- INSTALL ROADSIDE SIGN ON EX. POST



INSTALL NEW "BUS" PAVEMENT MARKINGS PER CALTRANS STD PLANS A24E. WHITE ON RED.



R28C (CA)
ARROWS PER PLAN



Underground Service Alert

Call: TOLL FREE

811/800

227-2600

TWO WORKING DAYS BEFORE YOU DIG

Fehr & Peers Associates, its employees, its officers or agents shall not be responsible for the accuracy or completeness of electronic copies of this plan sheet.

NO.	DATE	REVISIONS		BY
		DESCRIPTION		

PROFESSIONAL ENGINEER
LEE MURPHY
007027
CIVIL
STATE OF CA

NOT FOR CONSTRUCTION

DESIGNED BY: DM
CHECKED BY: AE
DATE: 04/28/2022
PROJECT NO: RS21-4048

FEHR & PEERS

1013 Galleria Boulevard
Suite 255
Roseville, CA 95678
(916) 773-1900

CAMPUS LOADING ZONES
SIGNING AND STRIPING PLANS
STADIUM DRIVE

CALIFORNIA

L-2

SHEET 3 OF 8

