

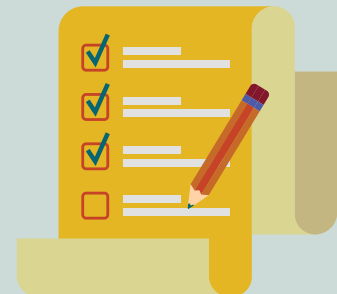
# DEVELOPING HISPANIC SERVING INSTITUTION (DHSI): INSPIRE

## Who We Are

*DHSI focuses on addressing different cultural issues that have historically limited students' success throughout the university with efforts on lowering the achievement gap.*

## Components

- **Centers for Learning Analytics and Student Success Research** – using data to make informed decisions to ensure learning is optimized and the academic needs of all students are equitably and efficiently addressed.
  - **Professional Learning Community (PLC)** – to assist faculty and directors to integrate analytics into their courses/programs in a more engaged and focused manner.
  - **Analytics Minigrant Program** – to support individual faculty and staff on projects that inform and improve student success.
  - **Faculty Chair Survey** – to gather information concerning growing demand and possible direction for educational endeavors surrounding data.
    - **8 out of 9** (9 being totally interested) average score that faculty chairs were interested in collecting data to better understand what students are learning or how they are successful in courses.
    - **83%** of faculty chairs were interested in pursuing data that looks at program outcomes.
    - **80%** of faculty chairs wanted to learn more about how to gather data.
    - **69%** of faculty chairs were interested in learning how to use big data products.
    - **69%** of faculty chairs were interested in working as a team to explore data.
  - **Data Perception Survey**
    - **72%** of respondents agreed that data should be centralized.
    - **50%** of respondents believed that there is limited knowledge to help them with determining which source will answer their specific questions about their program.



## Components

- **Network for Peer Assisted Student Success Programs** – to deliver student-to-student peer services including mentoring, tutoring, advising, and ambassador services.
  - **Professional Community of Inquiry (PCI)** – to expand faculty and staffs' ideas related to equity and interact with one another to breakdown silos.
  - **HSI INSPIRE Supported Peer Programs**
    - **Academic Support**
      1. Peer-Assisted Learning (PAL)
      2. Peer & Academic Resource Center (PARC) Supplemental Instruction
      3. Academic Technology Center
      4. TRIO/Services for Students With Disabilities (SSWD) Transition Coaching
    - **Mentoring and Advising Programs**
      1. Science Education Equity (SEE) Program
      2. Full Circle Project
      3. First Year Experience (FYE) Peer Mentors
      4. First Year Experience (FYE) Space
      5. Peer Led Advising College Experience (PLACE)
      6. National Student Speech-Language-Hearing Association (NSSLHA) Peer Undergraduate Mentoring Program
      7. College Assistance Migrant Program (CAMP) Leaders Internship Program
    - **Coaching and Ambassador Programs**
      1. Commit to Study
      2. First Year Experience
      3. DEGREES Project
  - **Collaboration Tool Survey** – to measure the engagement among peer network partners.
    - All programs affiliated with the network saw an increase in their collaboration levels.
    - PARC, First Year Experience, Dreamers Center, Student Leadership and CAMP were five programs that displayed high levels of collaboration.



## Recommendations

- Continue to educate on use and application of data
- Pursue data security and data sharing process
- Develop data source table
- Access data for peer programs
- Determine interest in data
- Increase PCI engagement
- Highlight importance of peer programs
- Expand endowment support
- Emphasize equity, diversity, and inclusivity in projects