

# MIGRANT STUDENT LEADERSHIP INSTITUTE (MSLI)

## Who we are

*A two-week residential program for migrant high school students providing the information and tools necessary to pursue a college career and be competitive candidates for admission to a four-year institution.*

## MSLI Goals

*MSLI helps students understand:*

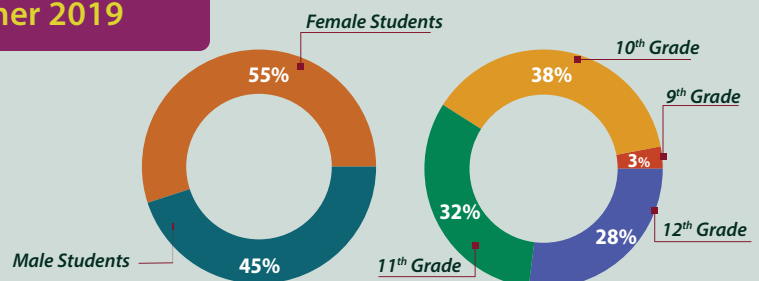
- Admission requirements to be admitted to a four-year institution
- Multiple pathways to college
- How to finance a college education
- The social, health and economic benefits of a college degree
- Their own values, goals, personal assets and challenges
- The difference between college and high school
- How to identify and utilize campus resources and services
- How to build a strategic network of mentors
- The importance of civic engagement, service learning and leadership
- Introduction to careers in science, technology, engineering, arts and mathematics (STEAM)



## Summer 2019

**76**

**Students** participated from  
Region 2 (Oroville, Woodland, and Santa Rosa)  
Region 3 (Merced, Madera, and Stanislaus)



## Overall Outcomes

**100%**

of participants rated their overall MSLI **experience positively** (excellent, great, and good).

**83%**

of MSLI students who graduated high school from **2011-2014** were enrolled in some form of college.

**46%**

of MSLI students pursued a field in **STEAM**.

## Program Components



Academic  
(English, Math and  
College Preparedness)



Recreational  
Activities



Leadership



Introduction to  
Sacramento State  
Campus Life



Cultural Arts



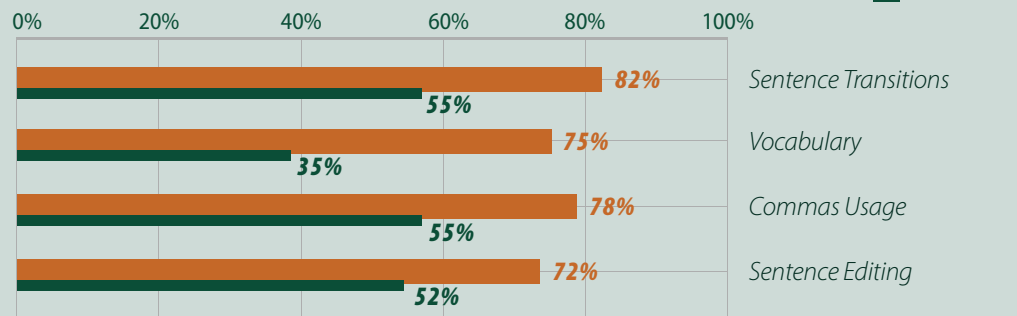
Health Care &  
Medicine



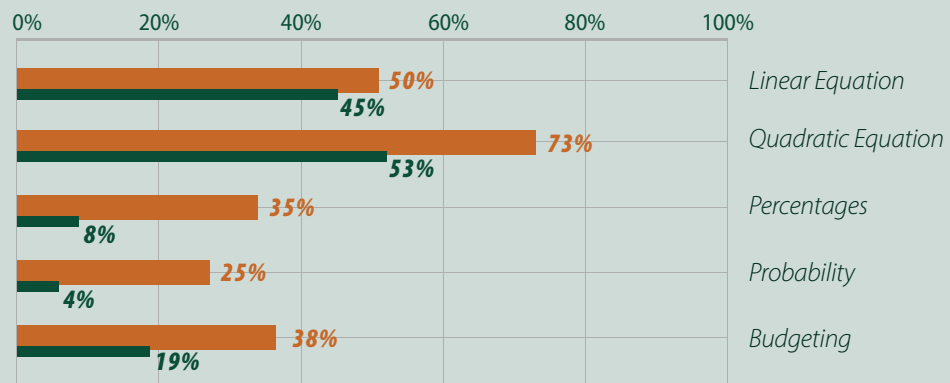
Science, Technology,  
Engineering, Arts,  
Mathematics Speakers

## Academic Competency Outcomes

### English Course



### Math Course



### College Preparedness

